
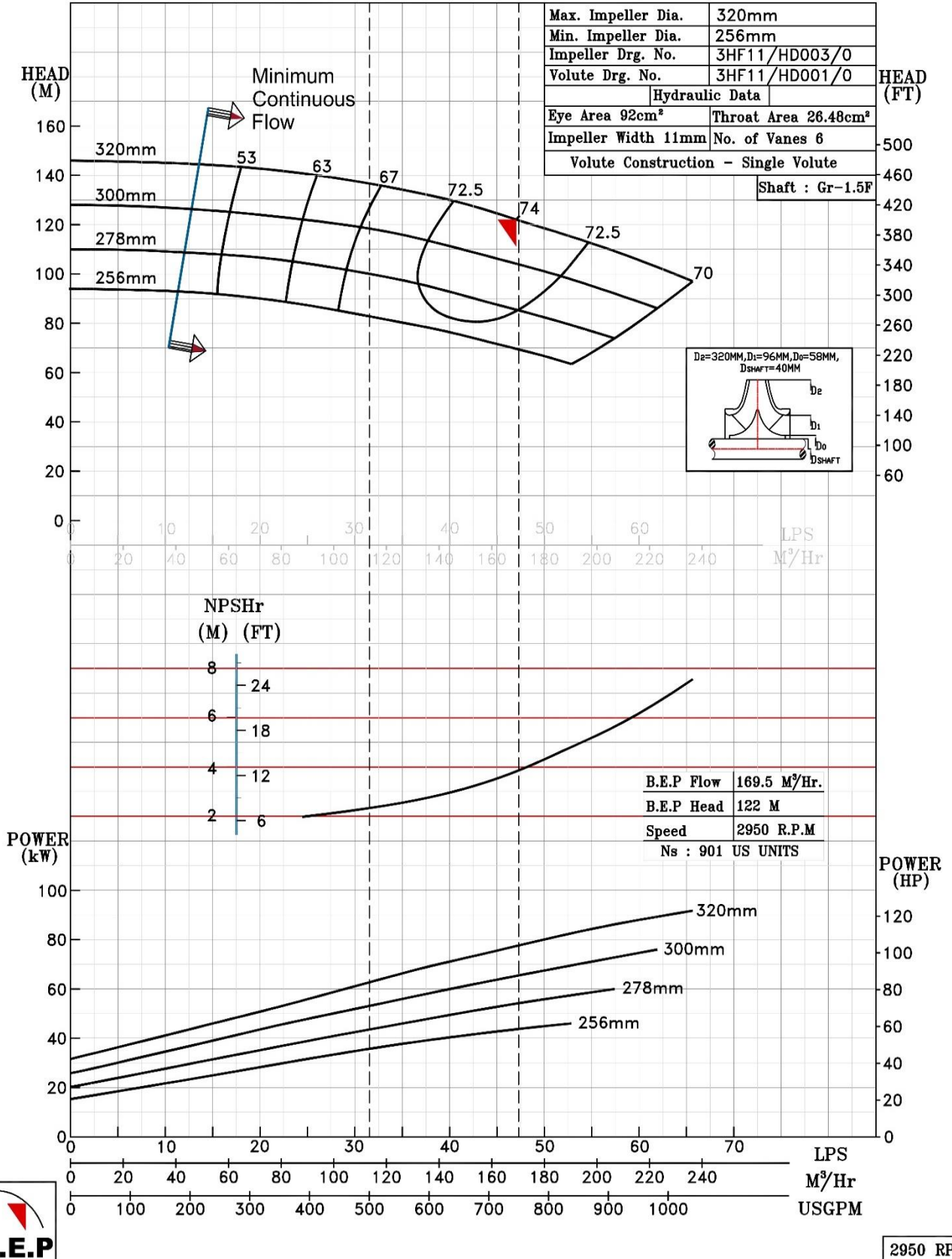


NOTE- PERFORMANCE AS PER ISO 9906 GRADE-2B


PERFORMANCE CURVE OF 3HF11 @2950 R.P.M		3HF11/Y/810152	
	PUMPSENSE		MODEL 3HF11
	<i>HF RANGE</i>		WORKING PRESS. 20 bar
RATED CAPACITY - 500 USGPM		SIZE 100x80-320	TEST PRESS. 30 bar
		TYPE-AXIALLY SPLIT CASE SINGLE STAGE	
		SPEED 2950 rpm	

PUMP PERFORMANCE CHARACTERISTICS COMPUTED BASED ON CLEAN COLD WATER S.G 1.0

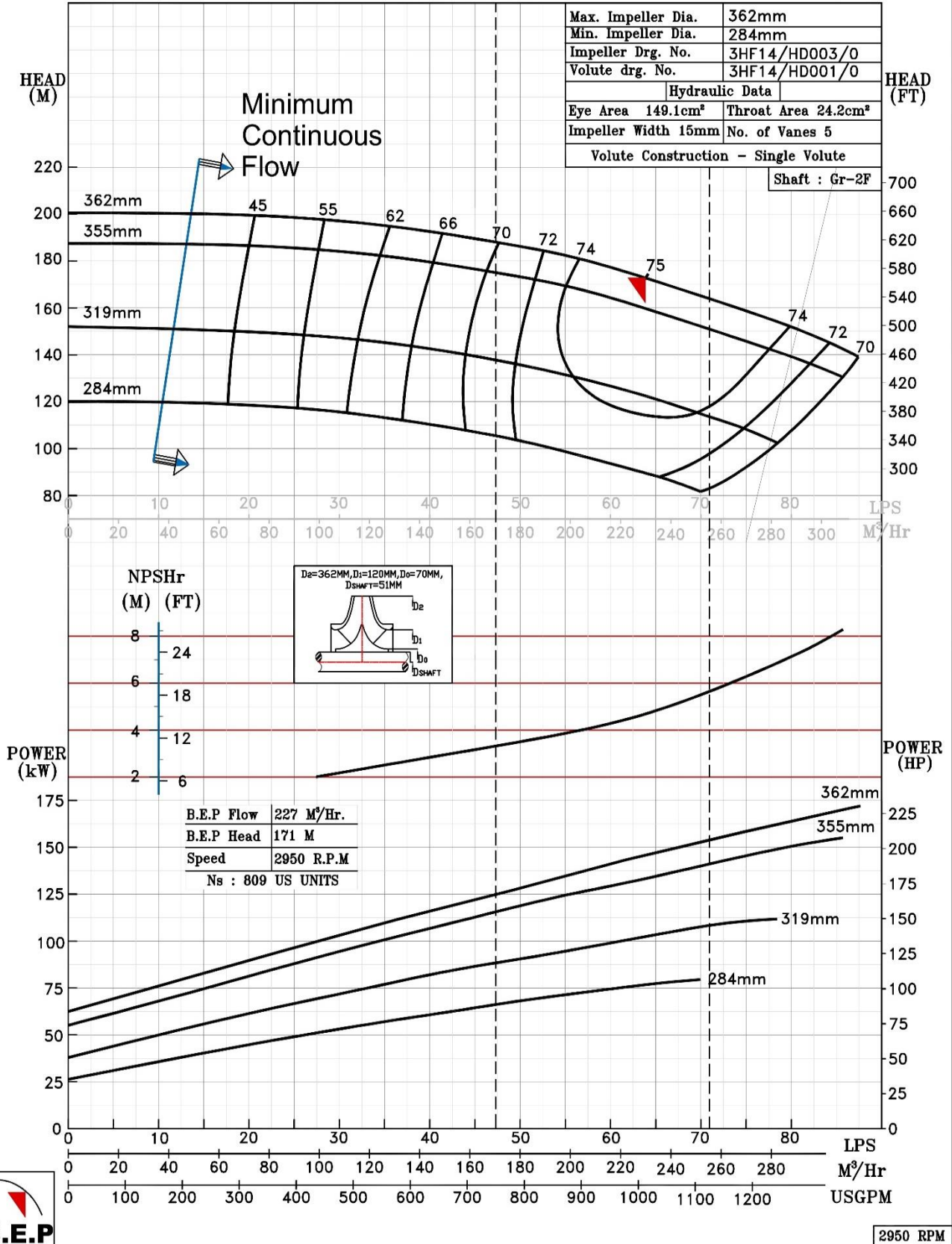


2950 RPM

NOTE- PERFORMANCE AS PER ISO 9906 GRADE-2B

PERFORMANCE CURVE OF 3HF14 @2950 R.P.M		3HF14/Y/801652	
 PUMPSENSE <i>HF RANGE</i>	MODEL 3HF14	WORKING PRESS.	22 bar
	SIZE 125x80-362	TEST PRESS.	33 bar
RATED CAPACITY - 500, 750 USGPM	TYPE-AXIALLY SPLIT CASE SINGLE STAGE		SPEED 2950 rpm

PUMP PERFORMANCE CHARACTERISTICS COMPUTED BASED ON CLEAN COLD WATER S.G 1.0



NOTE- PERFORMANCE AS PER ISO 9906 GRADE-2B

PERFORMANCE CURVE OF 3HF15 @2950 R.P.M

3HF15/Y/810252



PUMPSENSE

HF RANGE

MODEL 3HF15

WORKING PRESS. 22 bar

SIZE 100x80-384

TEST PRESS. 33 bar

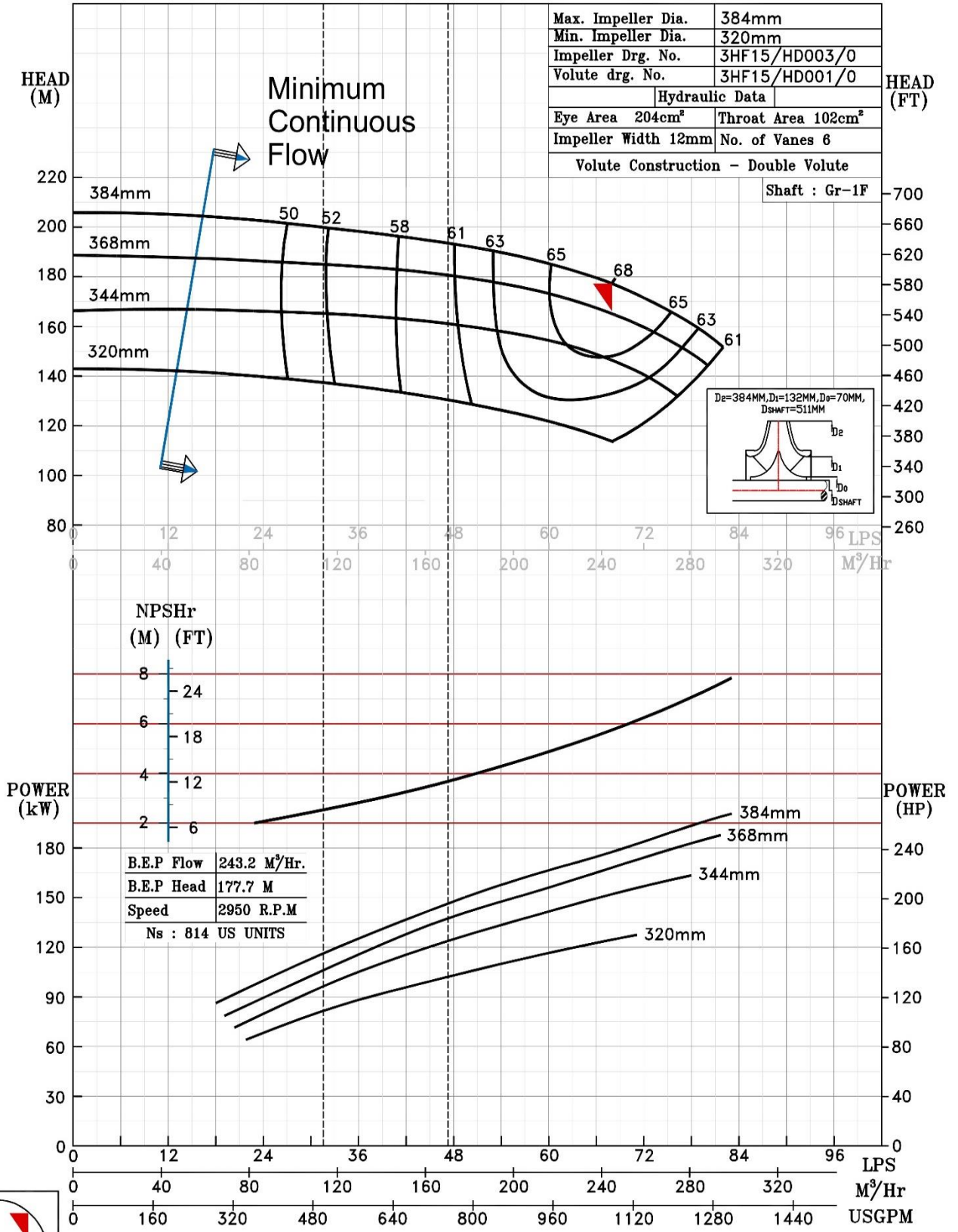
TYPE-AXIALLY SPLIT CASE SINGLE STAGE

SPEED 2950 rpm

RATED CAPACITY - 500 USGPM

DATE- 22.02.19

PUMP PERFORMANCE CHARACTERISTICS COMPUTED BASED ON CLEAN COLD WATER S.G 1.0



Max. Impeller Dia.	384mm
Min. Impeller Dia.	320mm
Impeller Drg. No.	3HF15/HD003/0
Volute drg. No.	3HF15/HD001/0
Hydraulic Data	
Eye Area 204cm ²	Throat Area 102cm ²
Impeller Width 12mm	No. of Vanes 6
Volute Construction - Double Volute	


Shaft : Gr-1F

B.E.P Flow	243.2 M ³ /Hr.
B.E.P Head	177.7 M
Speed	2950 R.P.M
Ns : 814 US UNITS	

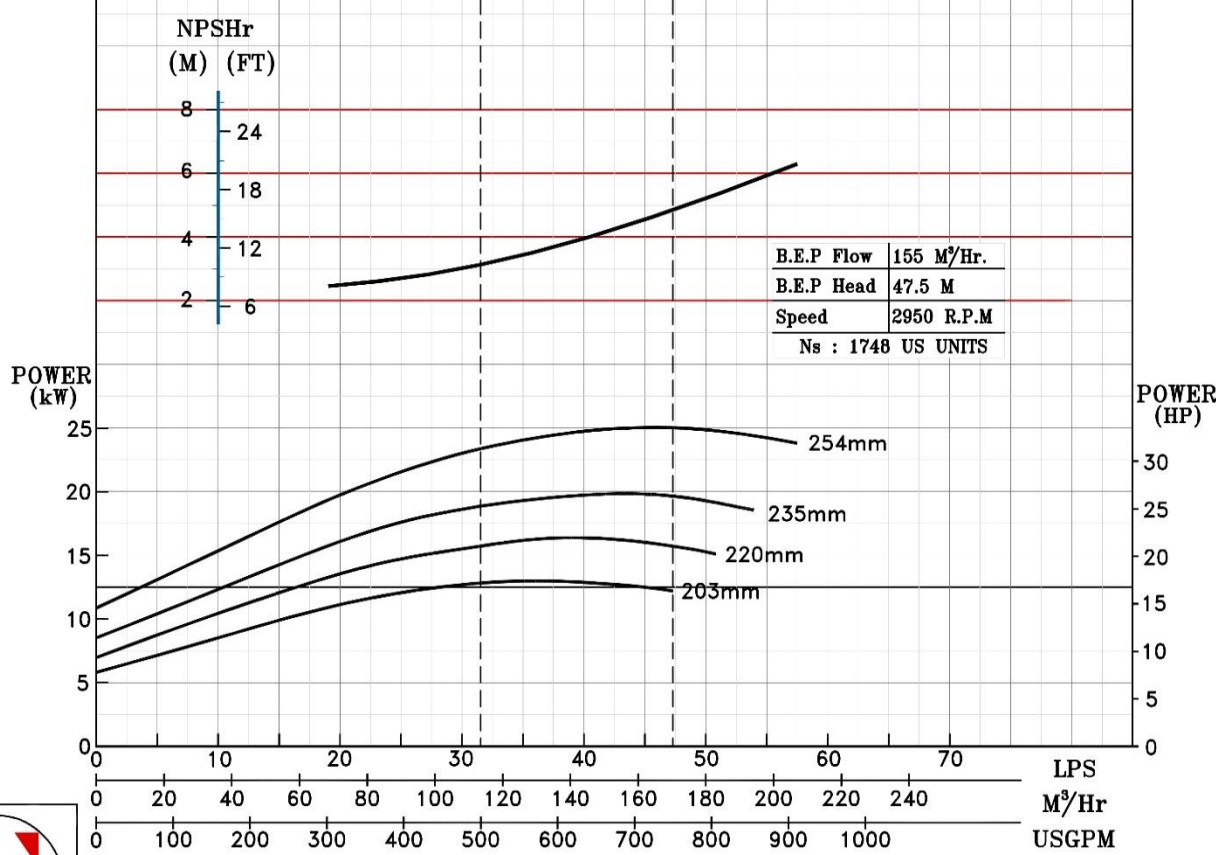
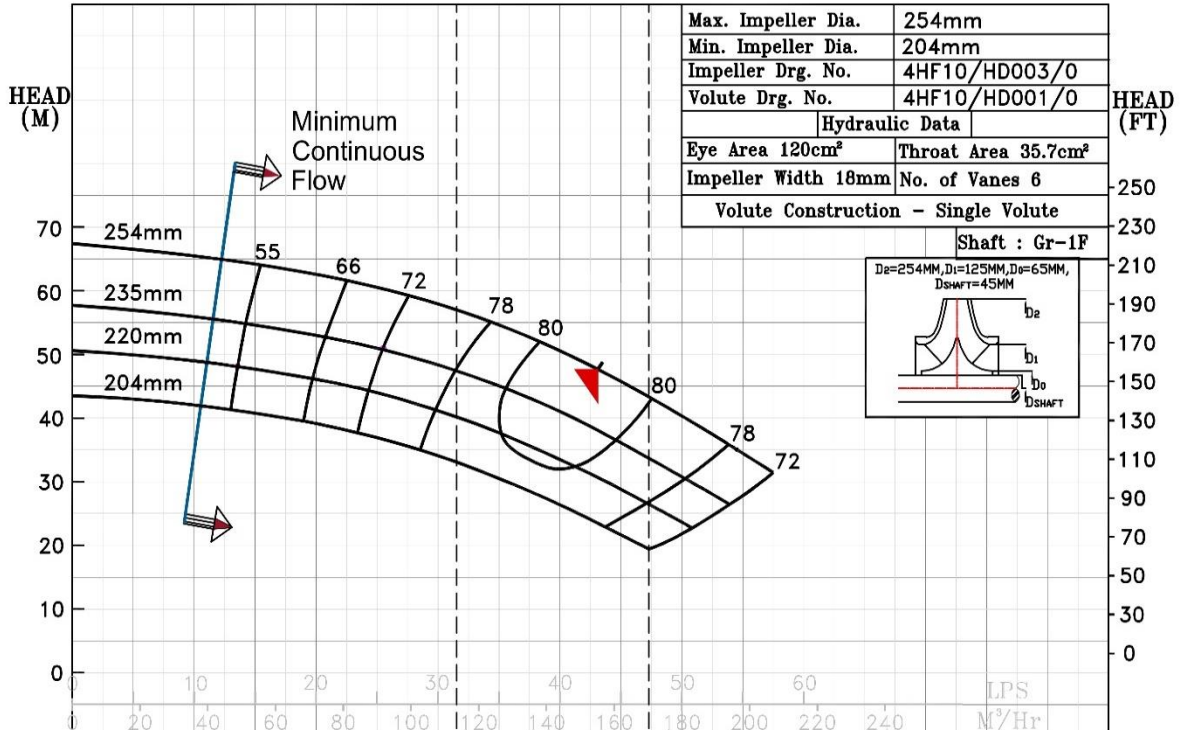


2950 RPM

NOTE- PERFORMANCE AS PER ISO 9906 GRADE-2B

PERFORMANCE CURVE OF 4HF10 @2950 R.P.M		4HF10/X/0111	
 PUMPSENSE	MODEL 4HF10	WORKING PRESS.	12 bar
	SIZE 125x100-254	TEST PRESS.	18 bar
HF RANGE		TYPE-AXIALLY SPLIT CASE SINGLE STAGE	
RATED CAPACITY - 500 USGPM		SPEED 2950 rpm	
		DATE- 17.01.19	

PUMP PERFORMANCE CHARACTERISTICS COMPUTED BASED ON CLEAN COLD WATER S.G 1.0



2950 RPM

NOTE- PERFORMANCE AS PER ISO 9906 GRADE-2B

PERFORMANCE CURVE OF 4HF11 @2950 R.P.M

4HF11/Y/810352



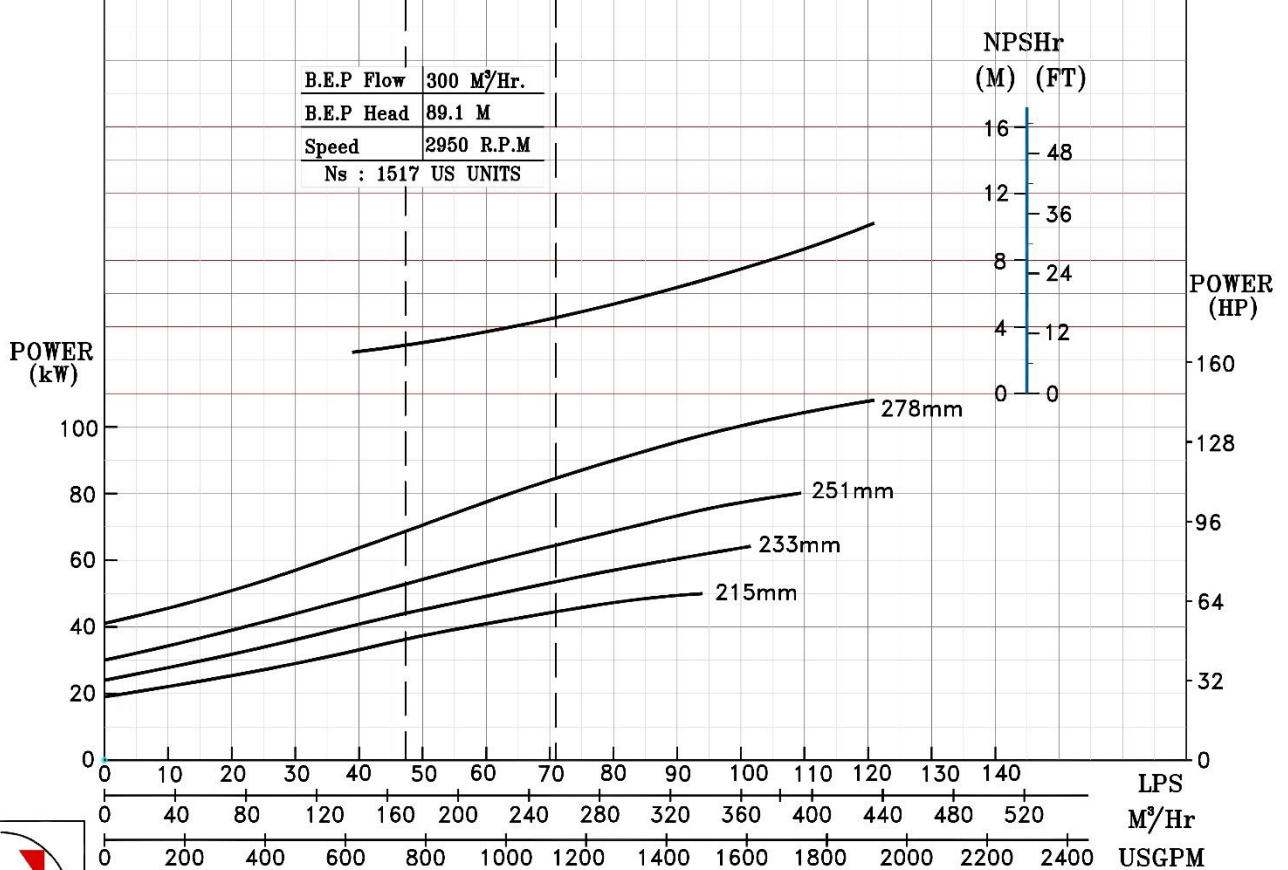
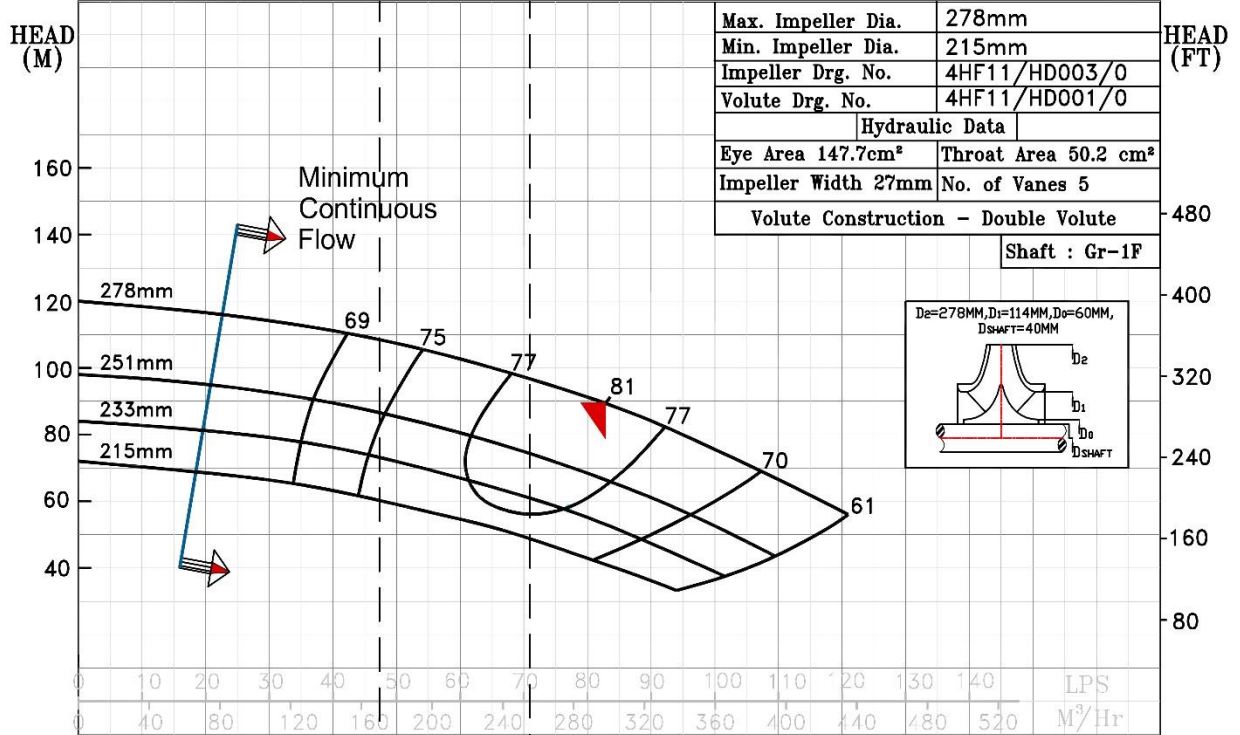
PUMPSENSE

HF RANGE


MODEL 4HF11	WORKING PRESS	18 bar
SIZE 125x100-278	TEST PRESS.	27 bar
TYPE-AXIALLY SPLIT CASE SINGLE STAGE		SPEED 2950 rpm

RATED CAPACITY - 750 USGPM

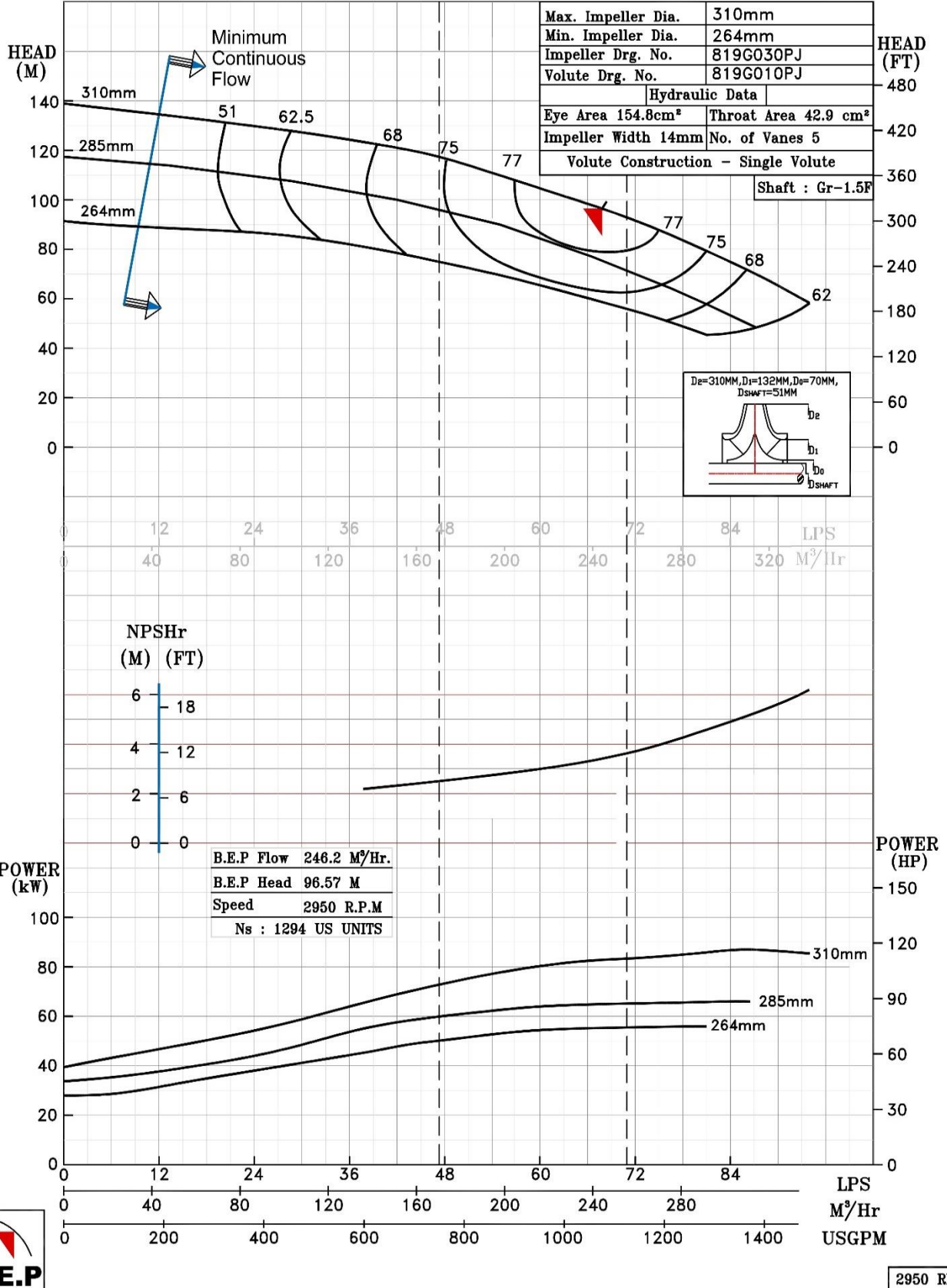
PUMP PERFORMANCE CHARACTERISTICS COMPUTED BASED ON CLEAN COLD WATER S.G 1.0




2950 RPM

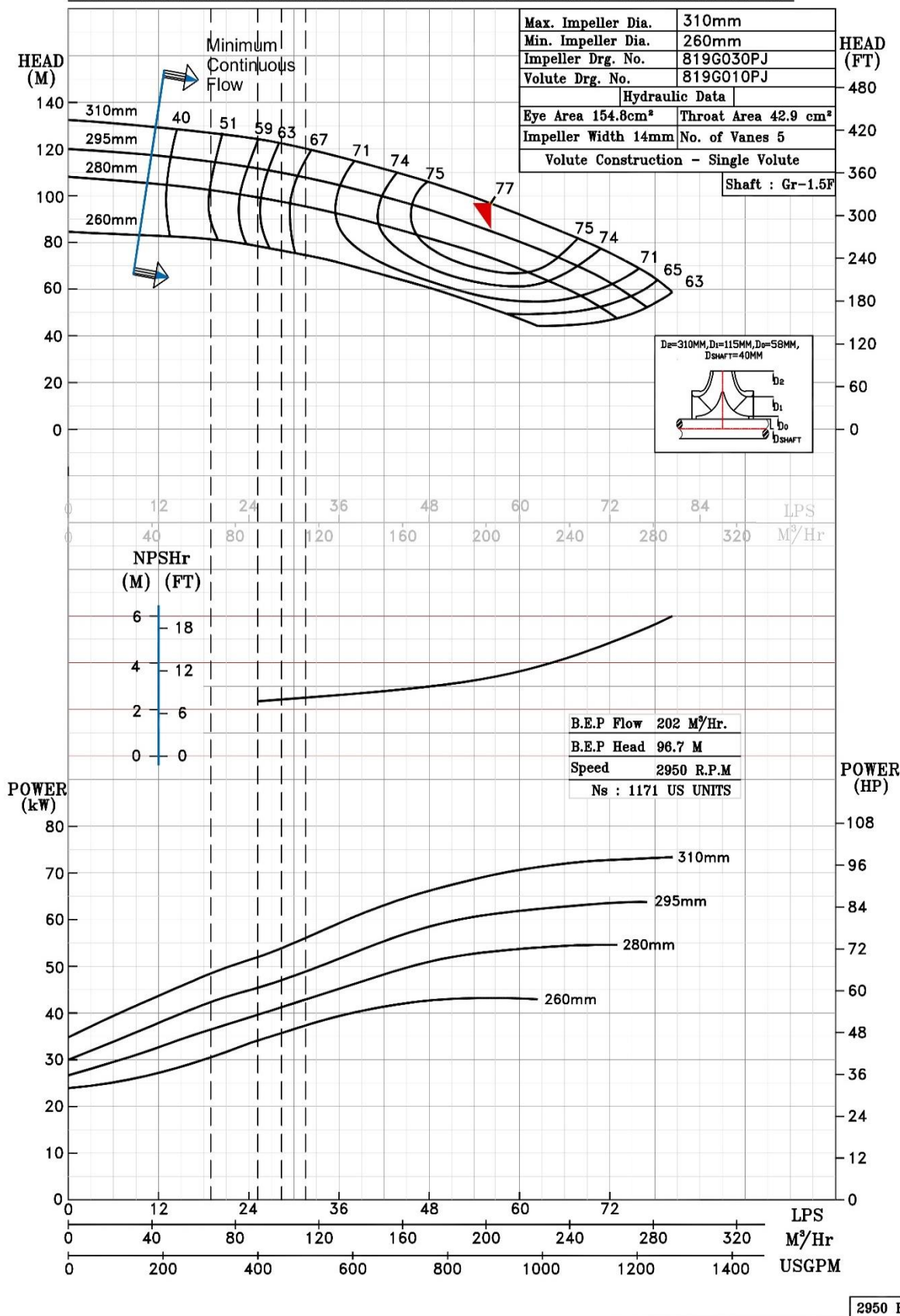
TEST CURVE OF 4HF12 @2950 R.P.M		WORKING PRESS. 20 bar
 PUMPSENSE	HF RANGE	MODEL 4HF12 TEST PRESS. 30 bar
		SIZE 150x100-310 RUPTURE PRESS 40 bar
RATED CAPACITY - 750 USGPM		TYPE-AXIALLY SPLIT CASE SINGLE STAGE
		SPEED 2950 rpm
		TEST DATE- 14.01.20

PUMP PERFORMANCE CHARACTERISTICS COMPUTED BASED ON CLEAN COLD WATER S.G 1.0




2950 RPM

TEST CURVE OF 4HF12L @2950 R.P.M		WORKING PRESS. 20 bar
 PUMPSENSE <i>HF RANGE</i>	MODEL 4HF12L	TEST PRESS. 30 bar
	SIZE 150x100-310	RUPTURE PRESS. 40 bar
RATED CAPACITY- 300,400,450&500 USGPM		SPEED 2950 rpm
		TEST DATE- 24.01.19
PUMP PERFORMANCE CHARACTERISTICS COMPUTED BASED ON CLEAN COLD WATER S.G 1.0		

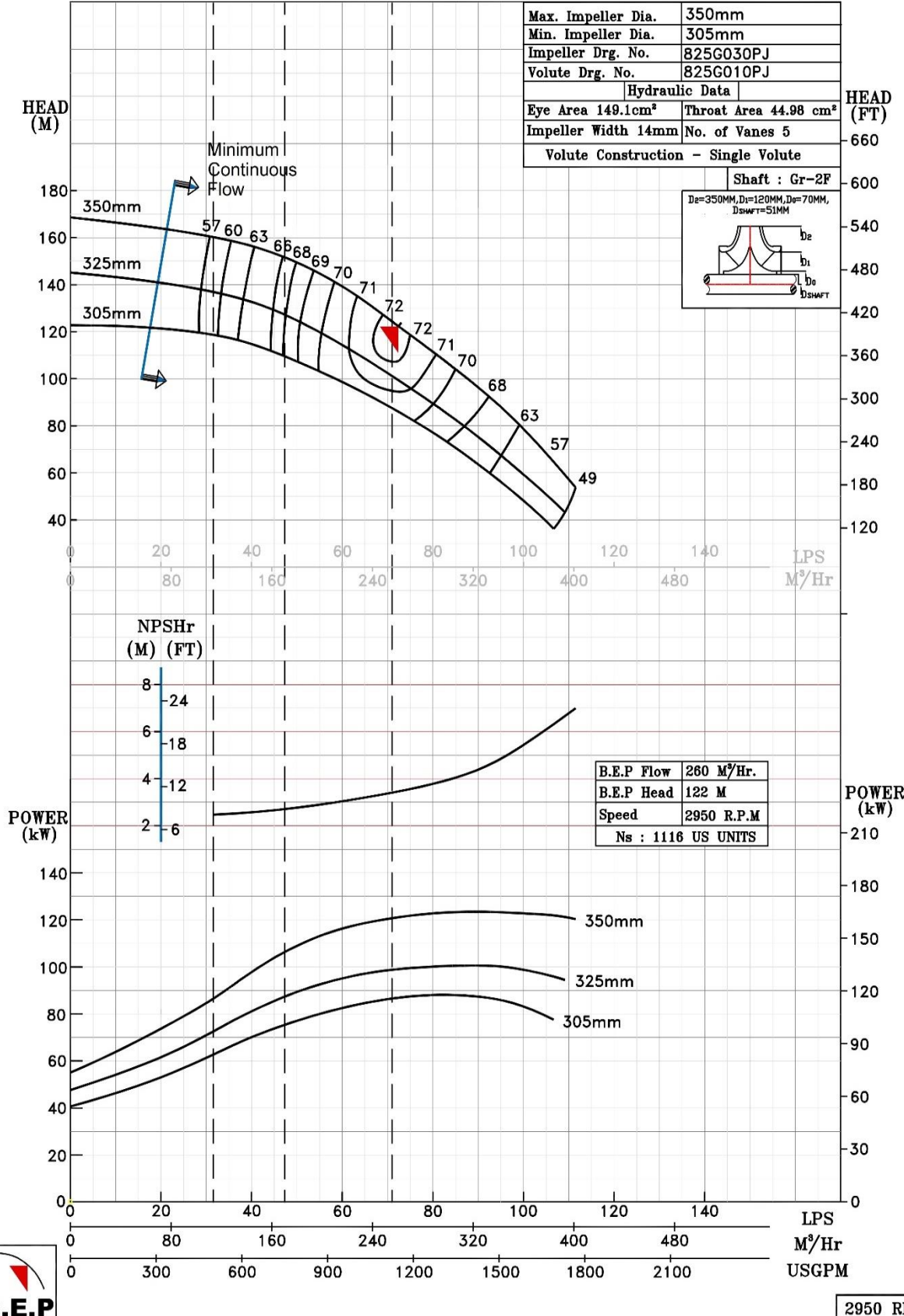


2950 RPM

NOTE- PERFORMANCE AS PER ISO 9906 GRADE-2B


PERFORMANCE CURVE OF 4HF13 @2950 R.P.M		4HF13/Y/812552	
	PUMPSense	MODEL 4HF13	WORKING PRESS. 20 bar
		SIZE 150x100-350	TEST PRESS. 30 bar
HF RANGE		TYPE-AXIALLY SPLIT CASE SINGLE STAGE	
RATED CAPACITY - 500,750 USGPM		SPEED 2950 rpm	
		DATE - 20.01.19	

PUMP PERFORMANCE CHARACTERISTICS COMPUTED BASED ON CLEAN COLD WATER S.G 1.0

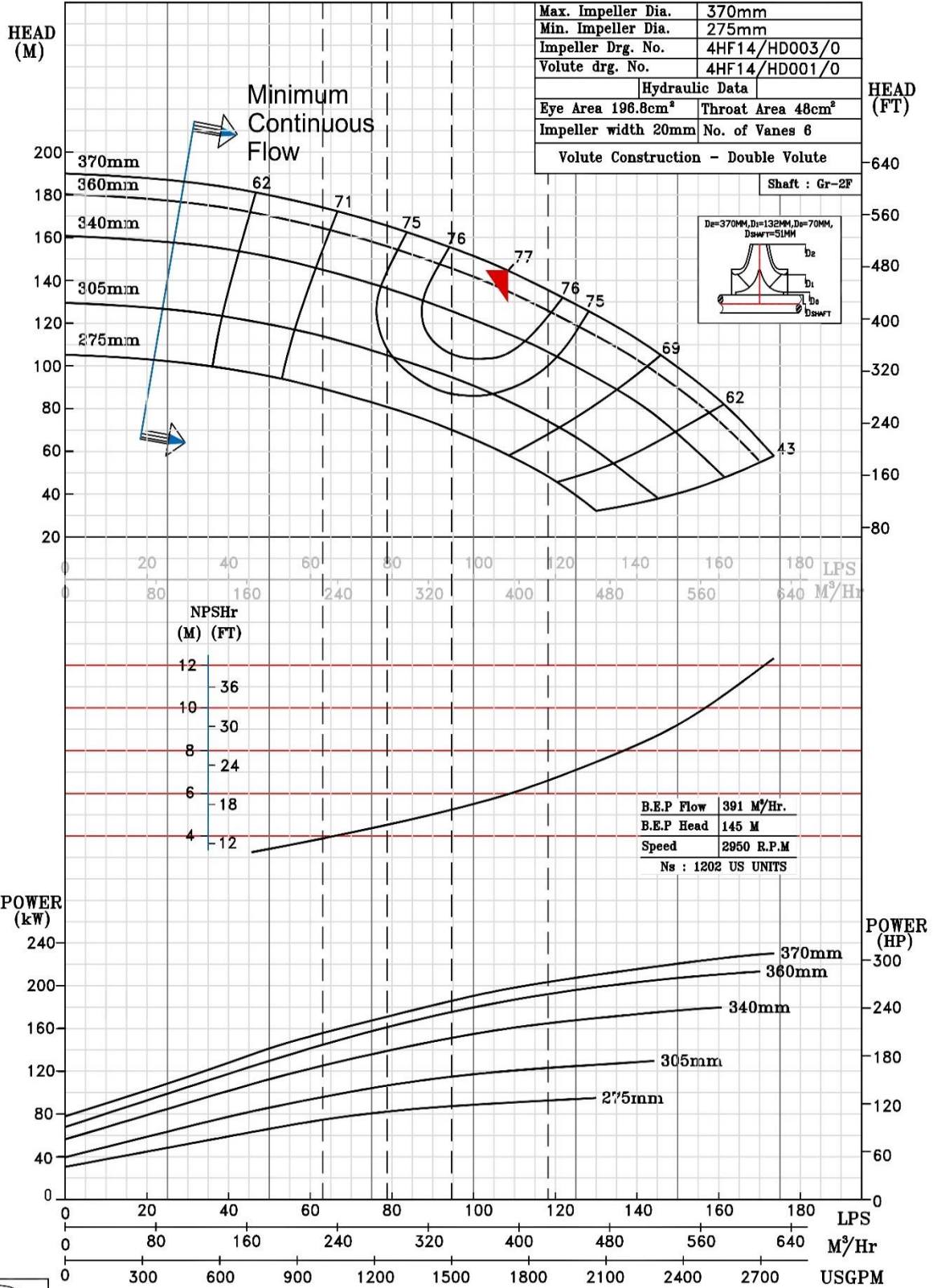


2950 RPM

NOTE- PERFORMANCE AS PER ISO 9906 GRADE-2B


PERFORMANCE CURVE OF 4HF14 @2950 R.P.M		4HF14/Y/810452	
	PUMPSENSE	MODEL 4HF14	WORKING PRESS. 20 bar
		SIZE 150x100-370	TEST PRESS. 30 bar
<i>HF RANGE</i>		TYPE - SPLIT CASE SINGLE STAGE	
RATED CAPACITY: 1000,1250 USGPM		SPEED 2950 rpm	

PUMP PERFORMANCE CHARACTERISTICS COMPUTED BASED ON CLEAN COLD WATER S.G 1.0

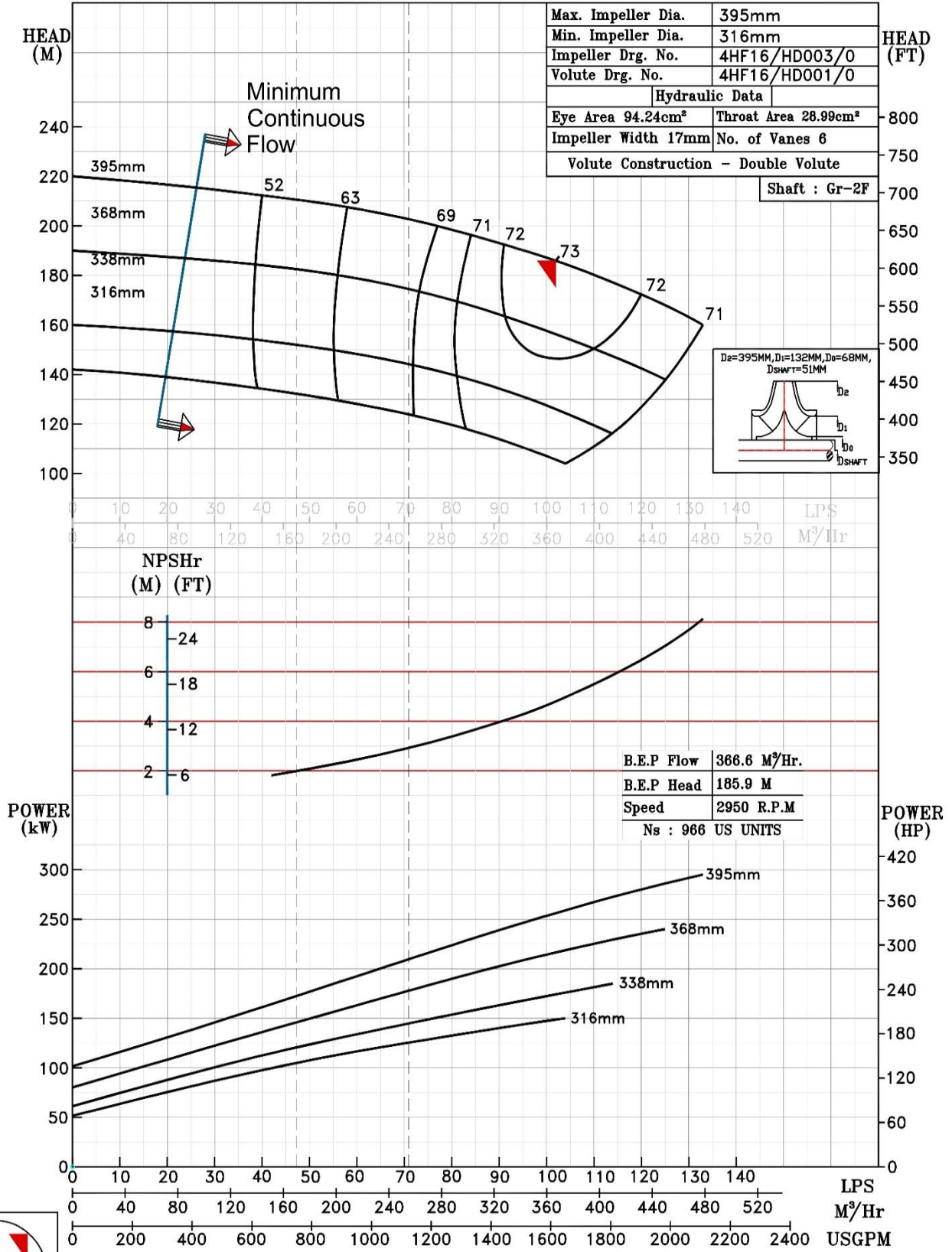


2950 R.P.M

NOTE- PERFORMANCE AS PER ISO 9906 GRADE-2B

PERFORMANCE CURVE OF 4HF16 @2950 R.P.M		4HF16/Y/800552	
 PUMPSENSE <i>HF RANGE</i>	MODEL 4HF16	WORKING PRESS.	16 bar
	SIZE 125x100-395	TEST PRESS.	24 bar
	TYPE-AXIALLY SPLIT CASE SINGLE STAGE		SPEED 2950 rpm
RATED CAPACITY - 750 USGPM			

PUMP PERFORMANCE CHARACTERISTICS COMPUTED BASED ON CLEAN COLD WATER S.G 1.0



2950 RPM

NOTE- PERFORMANCE AS PER ISO 9906 GRADE-2B

TEST CURVE OF 5HF11 @2950 R.P.M

5HF11/Y/822152



PUMPSENSE

HF RANGE

MODEL 5HF11

WORKING PRESS. 20 bar

TEST PRESS. 30 bar

RUPTURE PRESS. 40 bar

SIZE 150x125-310

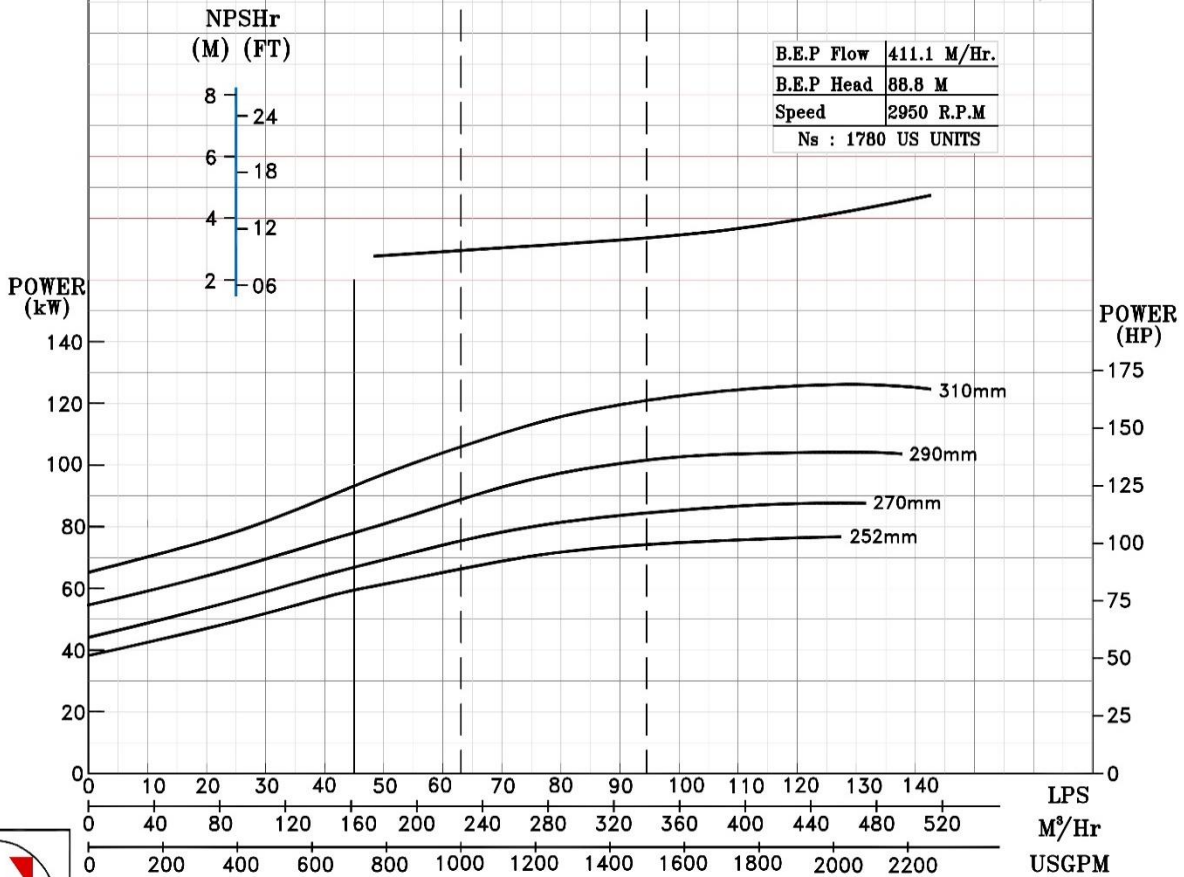
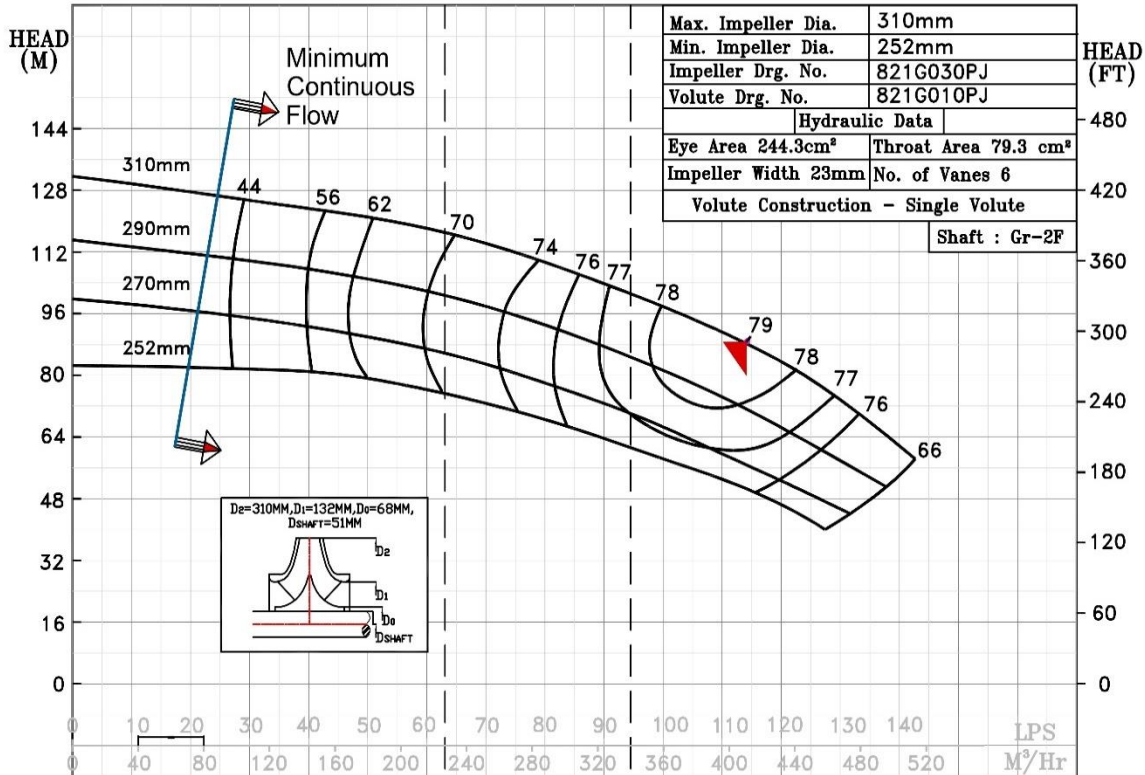
TYPE-AXIALLY SPLIT CASE SINGLE STAGE

SPEED 2950 rpm

TEST DATE- 22.01.19


RATED CAPACITY - 1000 USGPM

PUMP PERFORMANCE CHARACTERISTICS COMPUTED BASED ON CLEAN COLD WATER S.G 1.0

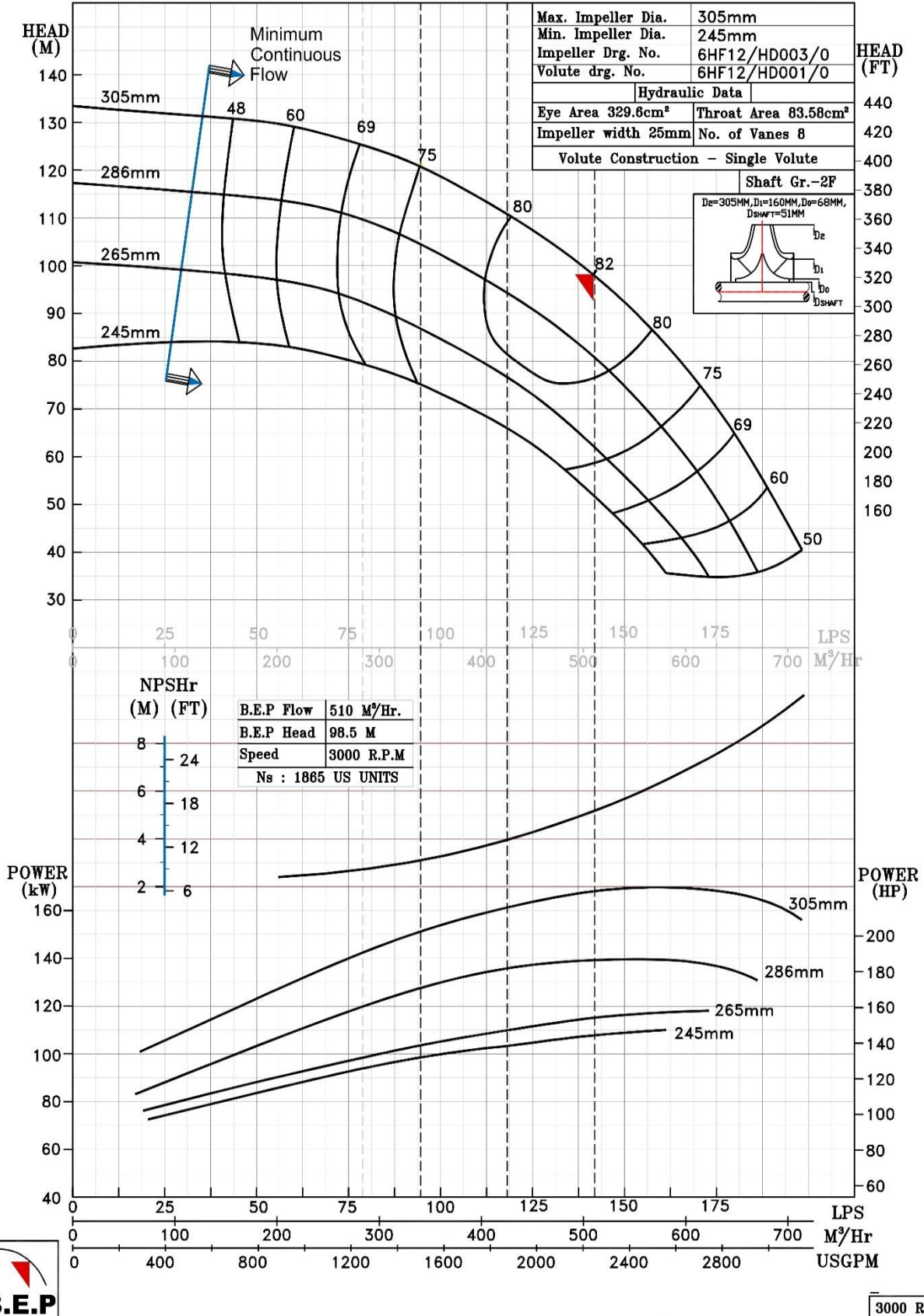


2950 RPM

NOTE- PERFORMANCE AS PER ISO 9906 GRADE-2B


PERFORMANCE CURVE OF 6HF12 @3000 R.P.M		6HF12/Y/800752	
 PUMPSENSE <i>HF RANGE</i>	MODEL 6HF12	WORKING PRESS. 18 bar	
	SIZE 200x150-305	TEST PRESS. 27 bar	
	TYPE-AXIALLY SPLIT CASE SINGLE STAGE		SPEED 3000 rpm
RATED CAPACITY - 1250,1500 USGPM			

PUMP PERFORMANCE CHARACTERISTICS COMPUTED BASED ON CLEAN COLD WATER S.G 1.0

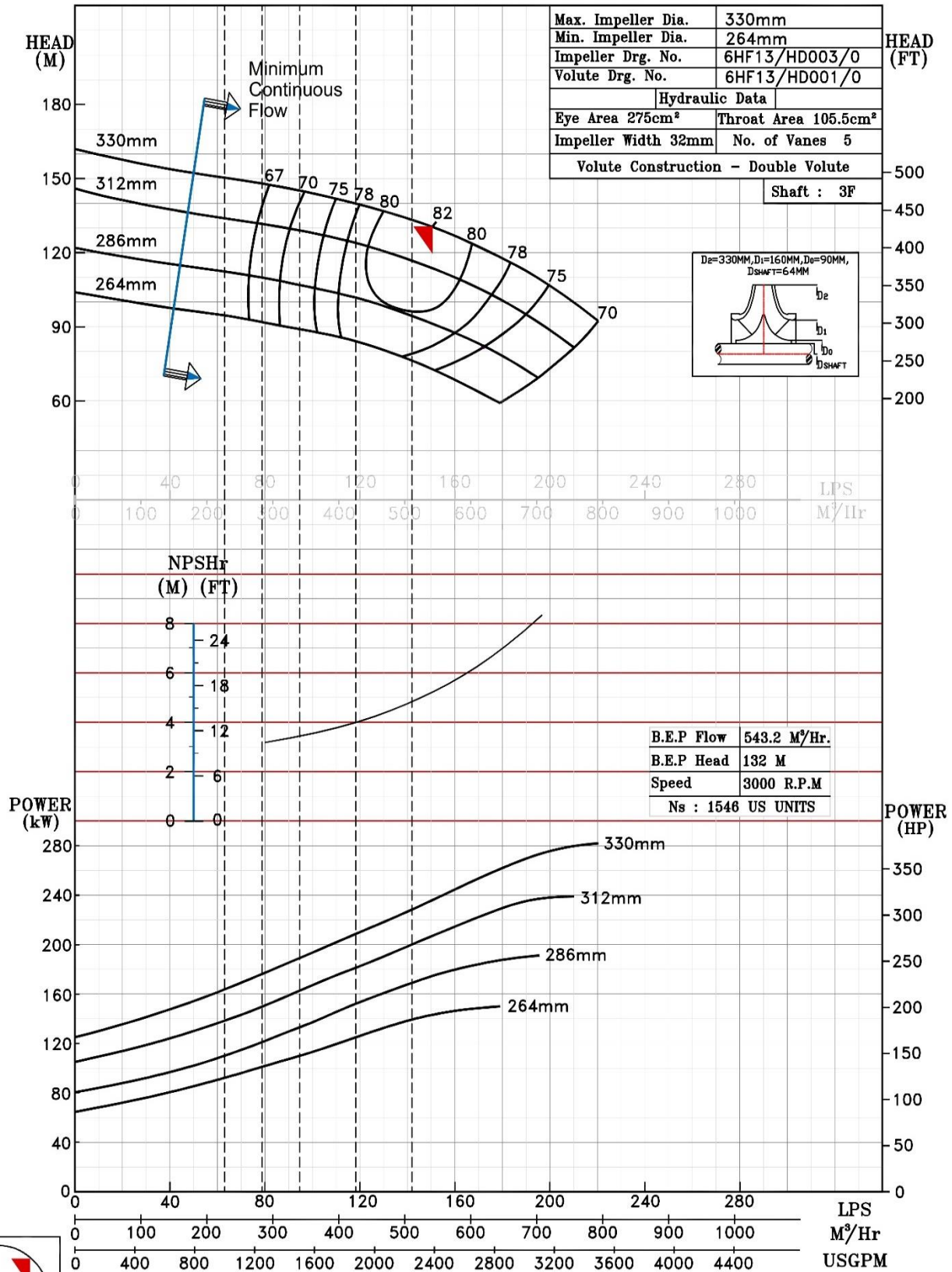


3000 RPM

NOTE- PERFORMANCE AS PER ISO 9906 GRADE-2B


PERFORMANCE CURVE OF 6HF13 @3000 R.P.M		6HF13/Y/800952	
 PUMPSENSE <i>HF RANGE</i>	MODEL 6HF13	WORKING PRESS.	22 bar
	SIZE 200x150-330	TEST PRESS.	33 bar
	TYPE-AXIALLY SPLIT CASE SINGLE STAGE		
	SPEED 3000 rpm		
RATED CAPACITY - 1000,1250,1500 USGPM			

PUMP PERFORMANCE CHARACTERISTICS COMPUTED BASED ON CLEAN COLD WATER S.G 1.0

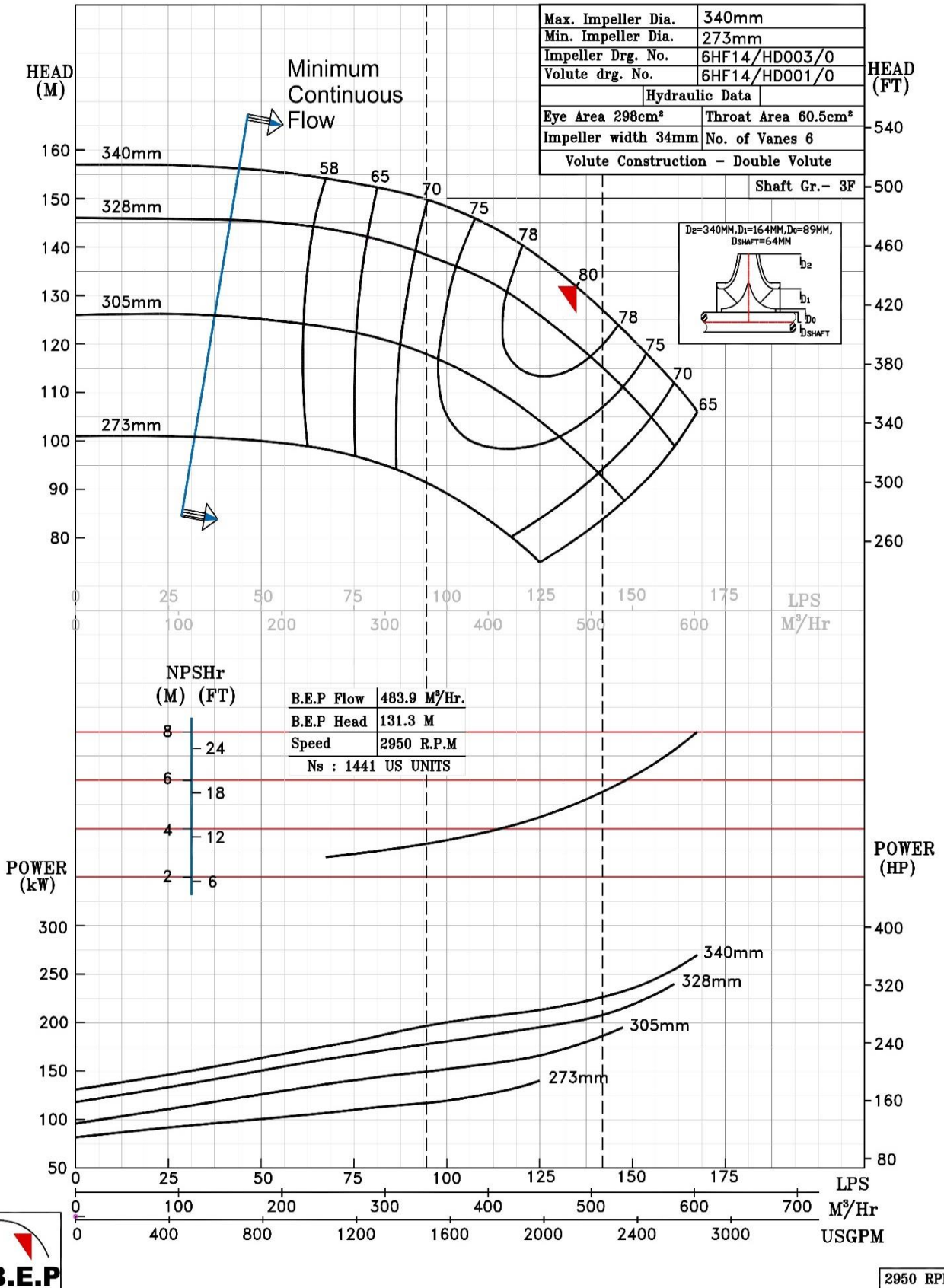


3000 RPM

NOTE- PERFORMANCE AS PER ISO 9906 GRADE-2B

PERFORMANCE CURVE OF 6HF14 @2950 R.P.M		6HF14/Y/810852	
 PUMPSense	MODEL 6HF14	WORKING PRESS.	24 bar
	HF RANGE	TEST PRESS.	36 bar
SIZE 200x150-340		TYPE-AXIALLY SPLIT CASE SINGLE STAGE	
RATED CAPACITY - 1500 USGPM		SPEED 2950 rpm	

PUMP PERFORMANCE CHARACTERISTICS COMPUTED BASED ON CLEAN COLD WATER S.G 1.0

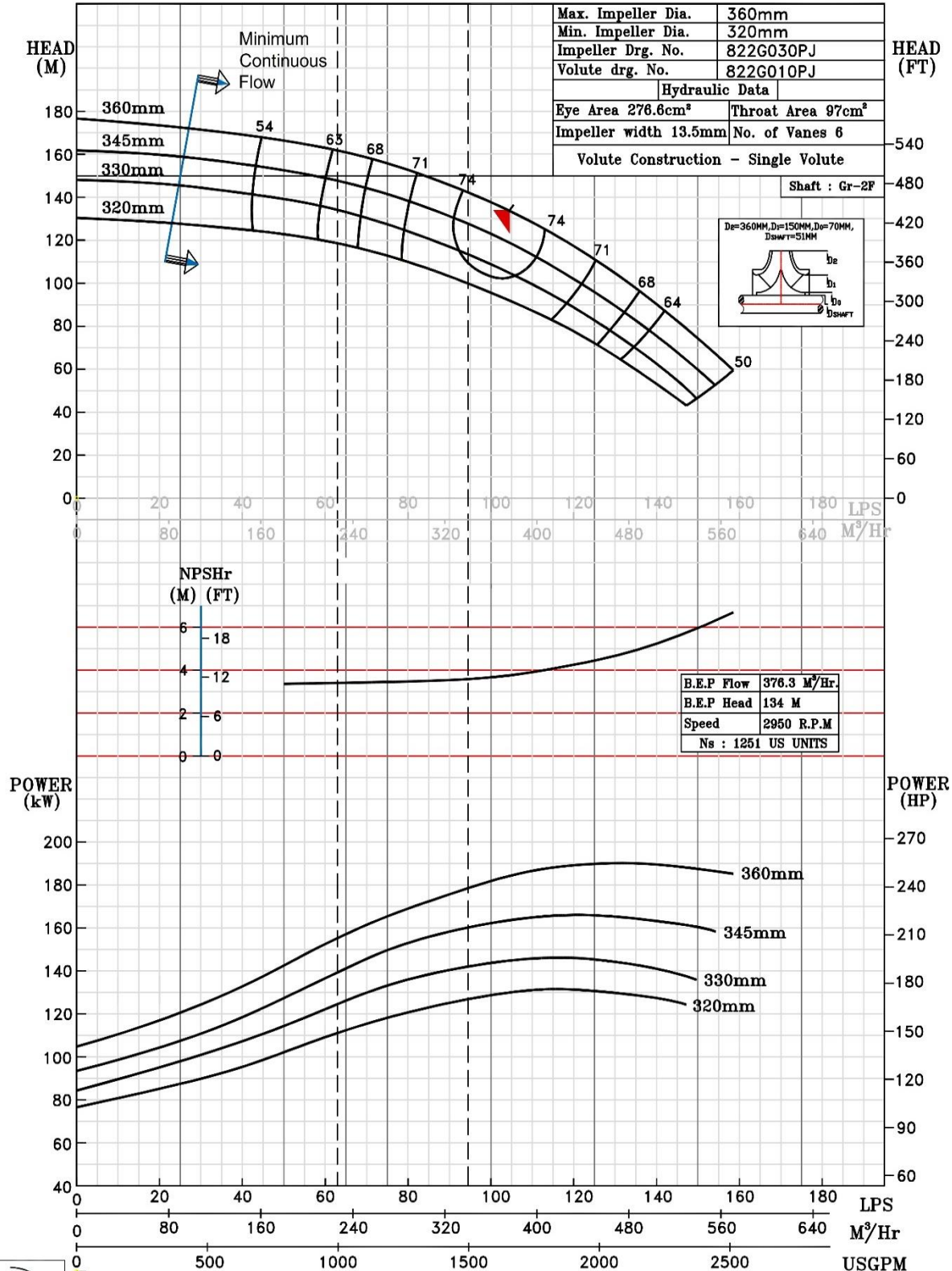


NOTE- PERFORMANCE AS PER ISO 9906 GRADE-2B

PERFORMANCE CURVE OF 6HF14K @2950 R.P.M		6HF14K/Y/0111	
 PUMPSENSE <i>HF RANGE</i>	MODEL 6HF14K	WORKING PRESS. 20 bar	
	SIZE 150x100-360	TEST PRESS. 30 bar	
	TYPE - SPLIT CASE SINGLE STAGE		SPEED 2950 rpm


RATED CAPACITY - 1000 USGPM

PUMP PERFORMANCE CHARACTERISTICS COMPUTED BASED ON CLEAN COLD WATER S.G. 1.0

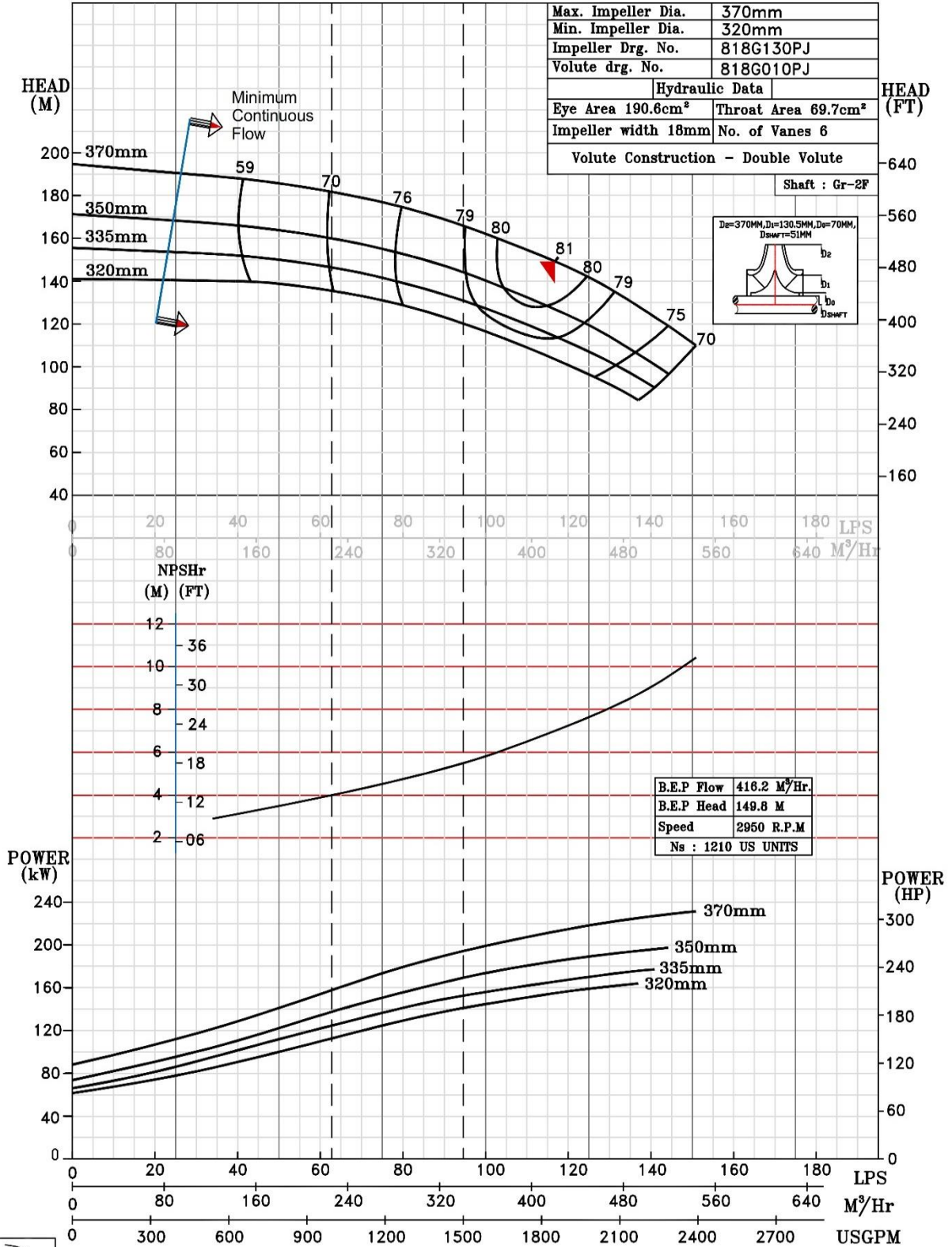


2950 RPM

NOTE- PERFORMANCE AS PER ISO 9906 GRADE-2B


PERFORMANCE CURVE OF 6HF15 @2950 R.P.M		6HF15/Y/801852	
 PUMPSENSE <i>HF RANGE</i>	MODEL 6HF15	WORKING PRESS. 20 bar	
	SIZE 200x150-370	TEST PRESS. 30 bar	
RATED CAPACITY: 1000 USGPM		TYPE - SPLIT CASE SINGLE STAGE	
		SPEED 2950 rpm	
		DATE - 16.10.17	

PUMP PERFORMANCE CHARACTERISTICS COMPUTED BASED ON CLEAN COLD WATER S.G 1.0



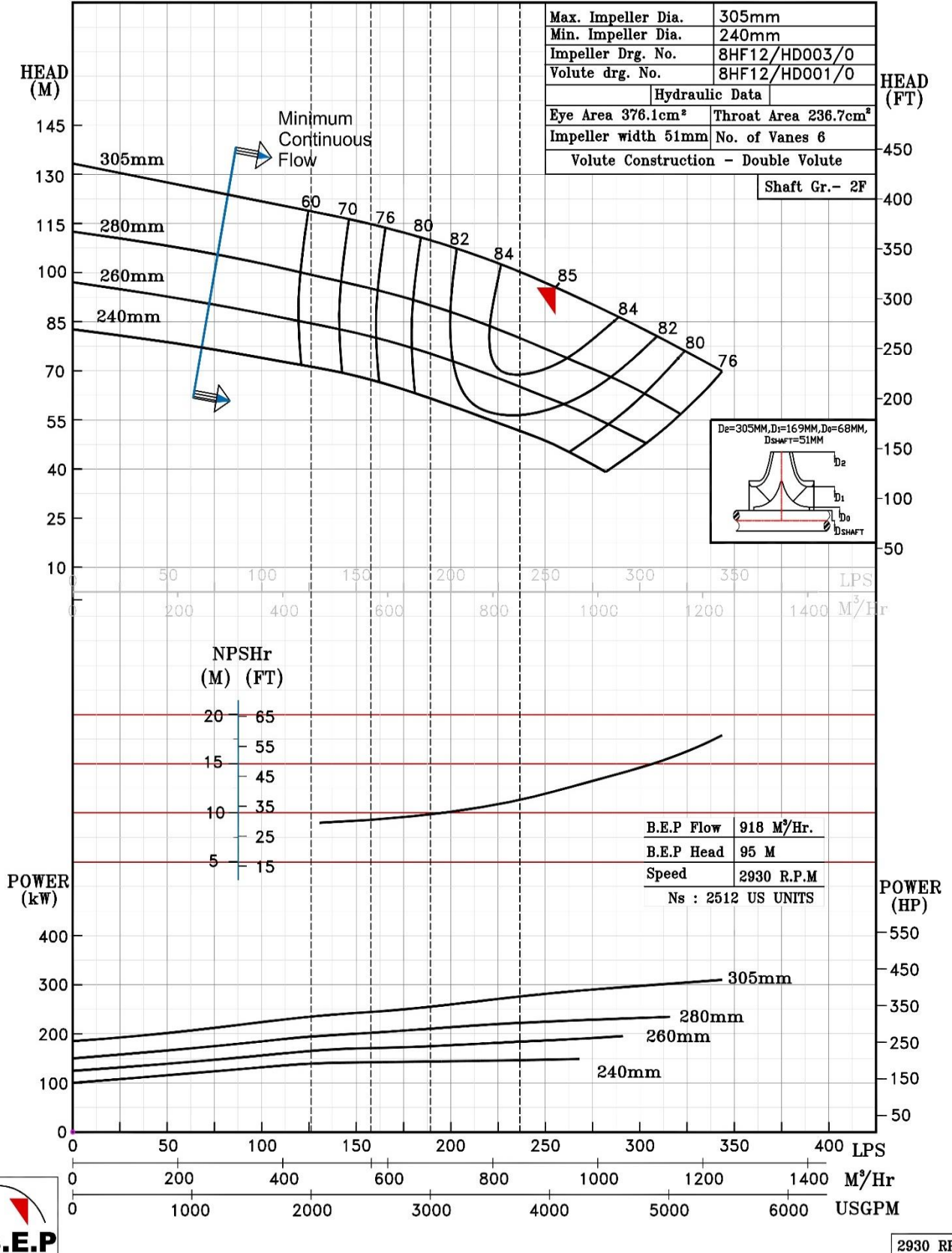
2950 RPM

NOTE- PERFORMANCE AS PER ISO 9906 GRADE-2B


PERFORMANCE CURVE OF 8HF12 @2930 R.P.M		8HF12/Y/811152	
 PUMPSENSE <i>HF RANGE</i>	MODEL 8HF12	WORKING PRESS. 16 bar	
	SIZE 200x200-305	TEST PRESS. 24 bar	
	TYPE-AXIALLY SPLIT CASE SINGLE STAGE		SPEED 2930 rpm

RATED CAPACITY - 2000,2500 USGPM

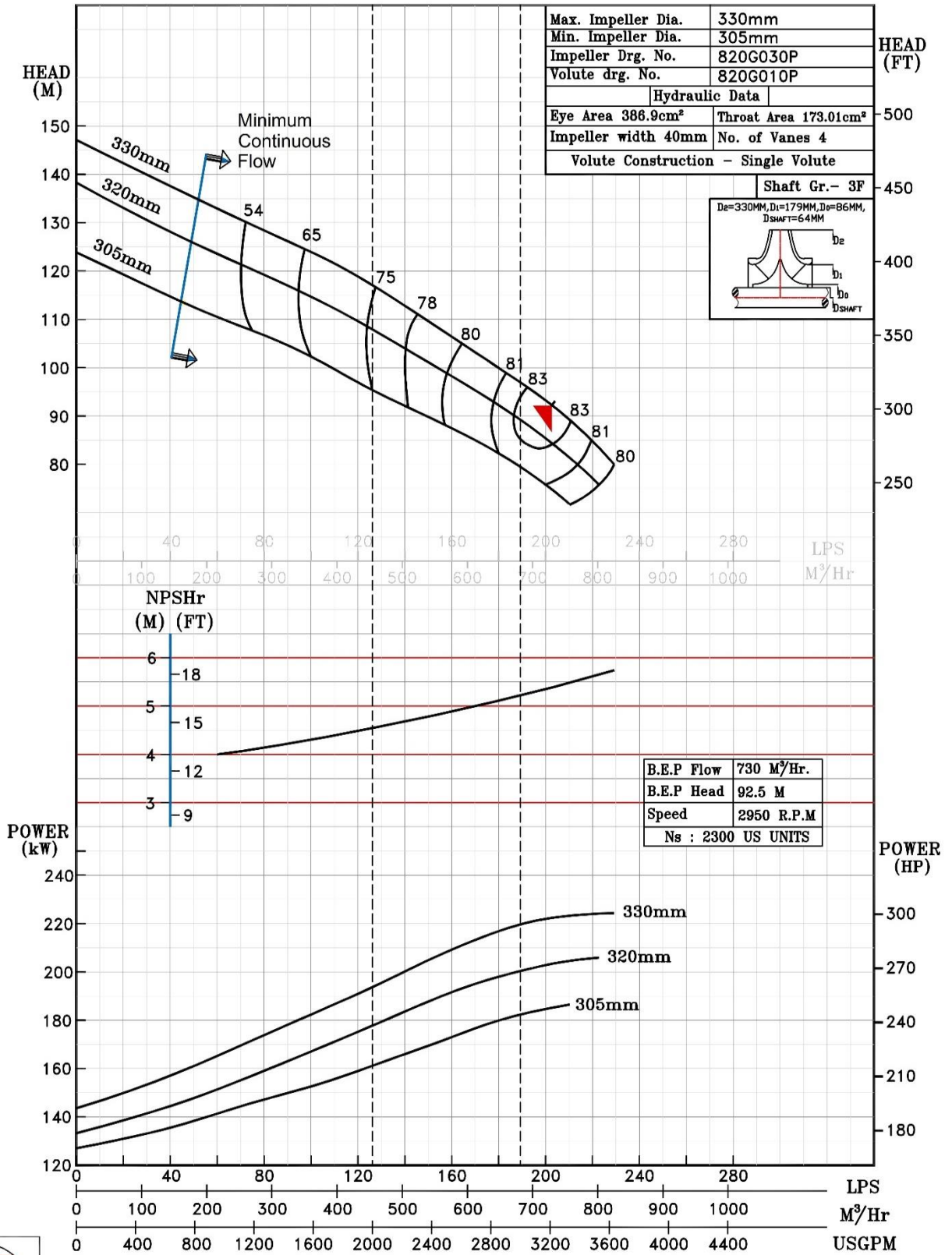
PUMP PERFORMANCE CHARACTERISTICS COMPUTED BASED ON CLEAN COLD WATER S.G 1.0



NOTE- PERFORMANCE AS PER ISO 9906 GRADE-2B


PERFORMANCE CURVE OF 8HF13 @2950 R.P.M		8HF13/Y/822052	
 PUMPSENSE <i>HF RANGE</i>	MODEL 8HF13	WORKING PRESS	20 bar
	SIZE 250x200-330	TEST PRESS.	30 bar
RATED CAPACITY - 2000 USGPM		SPEED 2950 rpm	
		DATE - 21.01.2020	

PUMP PERFORMANCE CHARACTERISTICS COMPUTED BASED ON CLEAN COLD WATER S.G 1.0



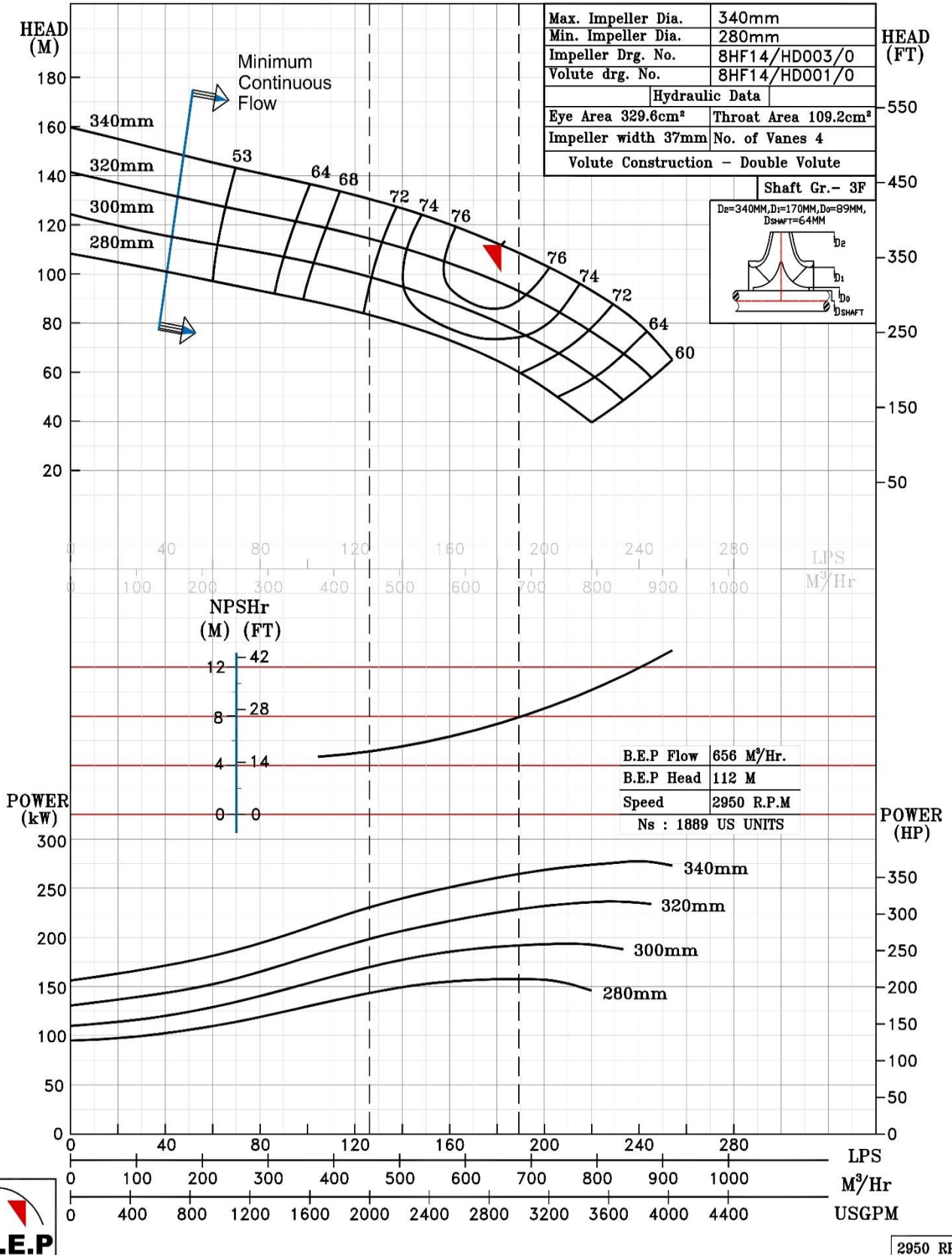
2950 RPM

NOTE- PERFORMANCE AS PER ISO 9906 GRADE-2B


PERFORMANCE CURVE OF 8HF14 @2950 R.P.M		8HF14/Y/811352	
 PUMPSENSE <i>HF RANGE</i>	MODEL 8HF14	WORKING PRESS	20 bar
	SIZE 250x200-350	TEST PRESS.	30 bar
	TYPE-AXIALLY SPLIT CASE SINGLE STAGE		SPEED 2950 rpm

RATED CAPACITY - 2000 USGPM

PUMP PERFORMANCE CHARACTERISTICS COMPUTED BASED ON CLEAN COLD WATER S.G 1.0



NOTE- PERFORMANCE AS PER ISO 9906 GRADE-2B

PERFORMANCE CURVE OF 8HF15 @2950 R.P.M		8HF15/Y/802352	
 PUMPSENSE <i>HF RANGE</i>	MODEL 8HF15	WORKING PRESS. 18 bar	
	SIZE 300x200-380	TEST PRESS. 27 bar	
RATED CAPACITY - 3000 USGPM		TYPE-AXIALLY SPLIT CASE SINGLE STAGE	
		SPEED 2950 rpm	
		DATE - 16.02.18	

PUMP PERFORMANCE CHARACTERISTICS COMPUTED BASED ON CLEAN COLD WATER S.G 1.0

