

NOTE- PERFORMANCE AS PER ISO 9906 GRADE-2B

PERFORMANCE CURVE OF 10HS22 @740 R.P.M

10HS22/Y/103758



PUMPSENSE

HS RANGE

MODEL 10HS22

WORKING PRESS. 10 bar

SIZE 300x250-568

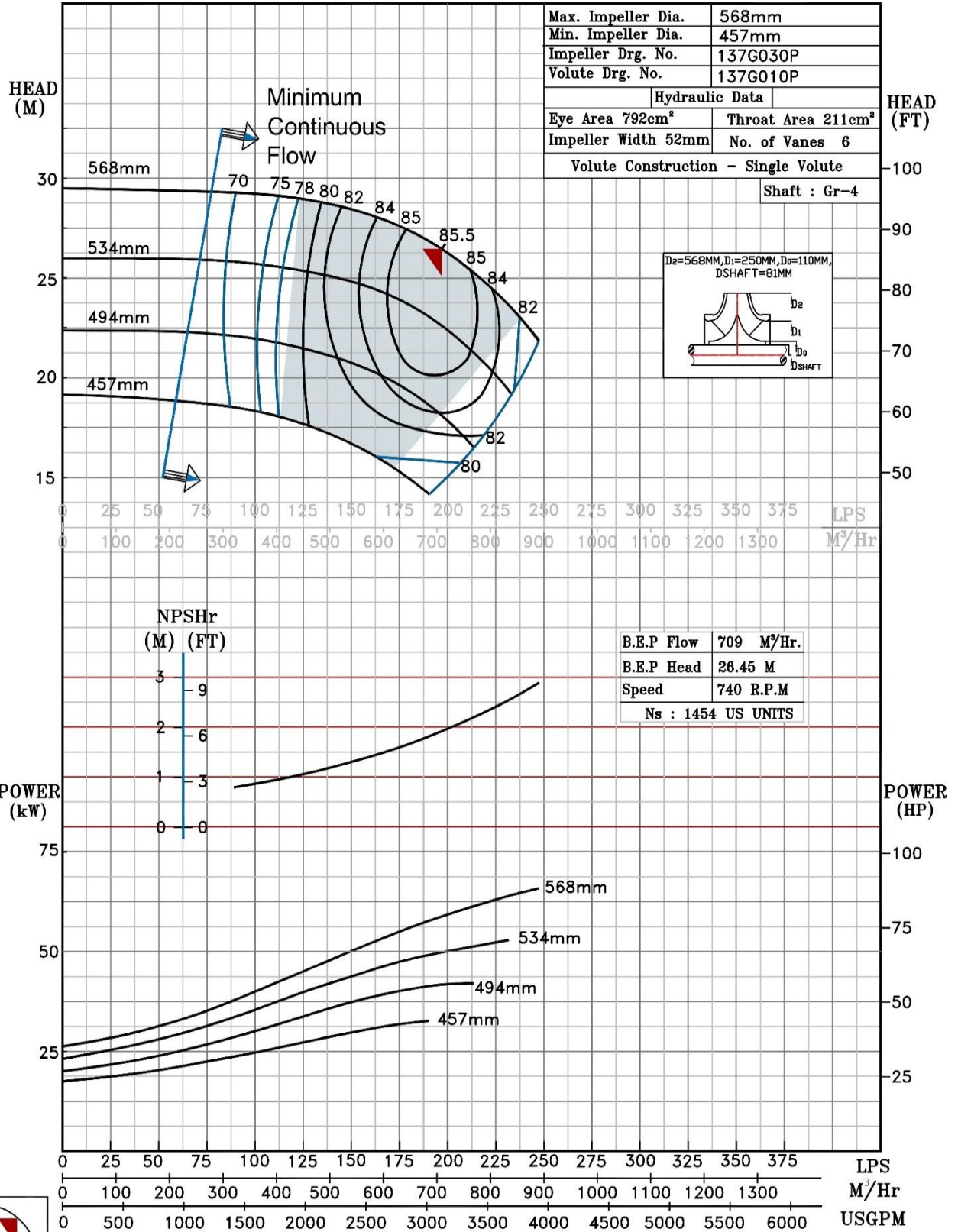
TEST PRESS. 15 bar

TYPE-AXIALLY SPLIT CASE SINGLE STAGE

SPEED 740 rpm


SHADED REGION ON THE H-Q CURVE REPRESENTS OPTIMUM SELECTION ZONE

PUMP PERFORMANCE CHARACTERISTICS COMPUTED BASED ON CLEAN COLD WATER S.G 1.0

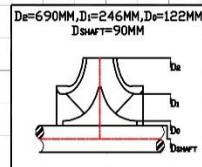
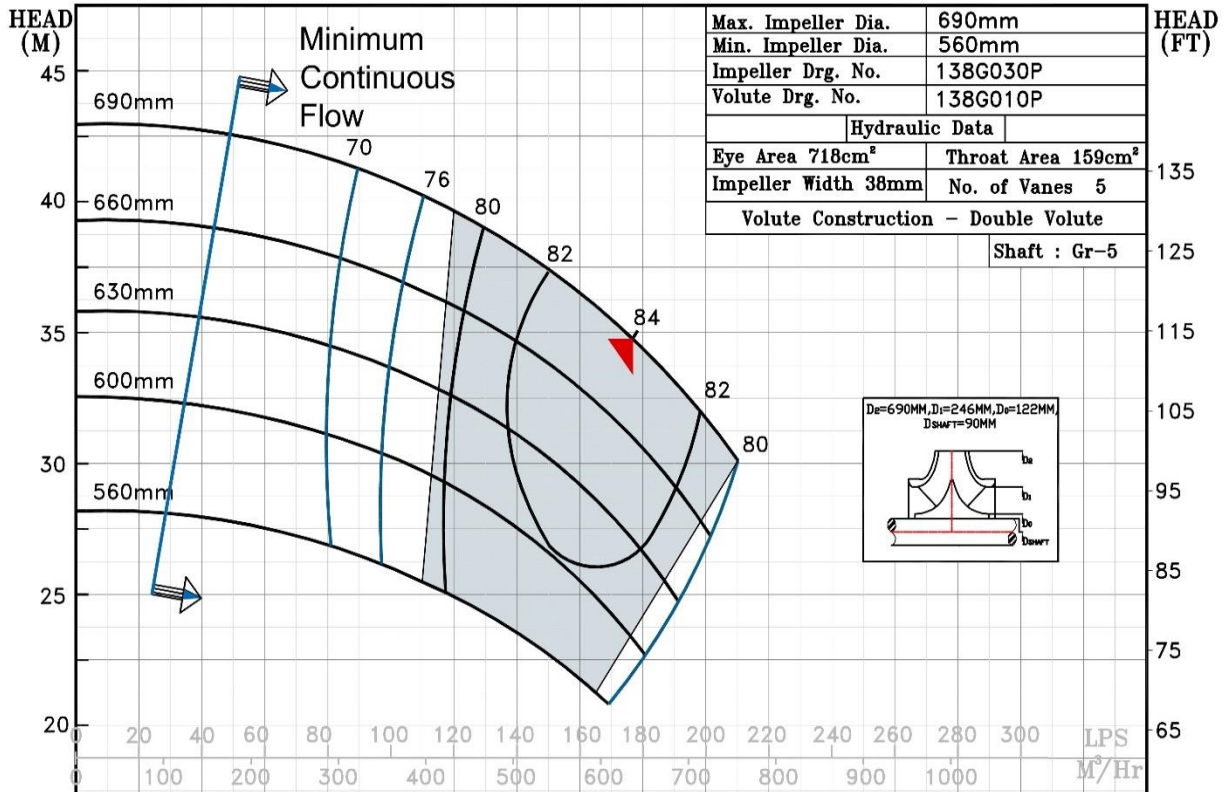


740 RPM

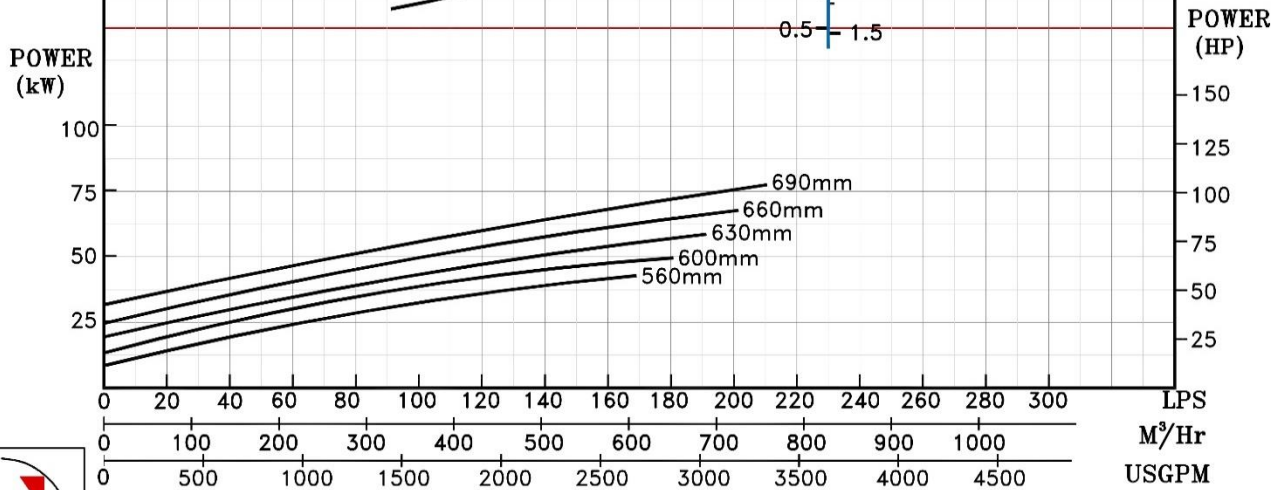
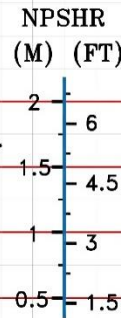
NOTE- PERFORMANCE AS PER ISO 9906 GRADE-2B

<b>PERFORMANCE CURVE OF 10HS27 @740 R.P.M</b>		10HS27/X/103858		
 <b>PUMPSENSE</b> <i>HS RANGE</i>	<b>MODEL 10HS27</b>	WORKING PRESS.	10 bar	
	SIZE 300x250-690	TEST PRESS.	15 bar	
	TYPE-AXIALLY SPLIT CASE SINGLE STAGE		SPEED 740 rpm	

SHADED REGION ON THE H-Q CURVE REPRESENTS OPTIMUM SELECTION ZONE  
 PUMP PERFORMANCE CHARACTERISTICS COMPUTED BASED ON CLEAN COLD WATER S.G 1.0




B.E.P Flow	636.5 M <sup>3</sup> /Hr.
B.E.P Head	34.75 M
Speed	740 R.P.M
Ns : 1123 US UNITS	

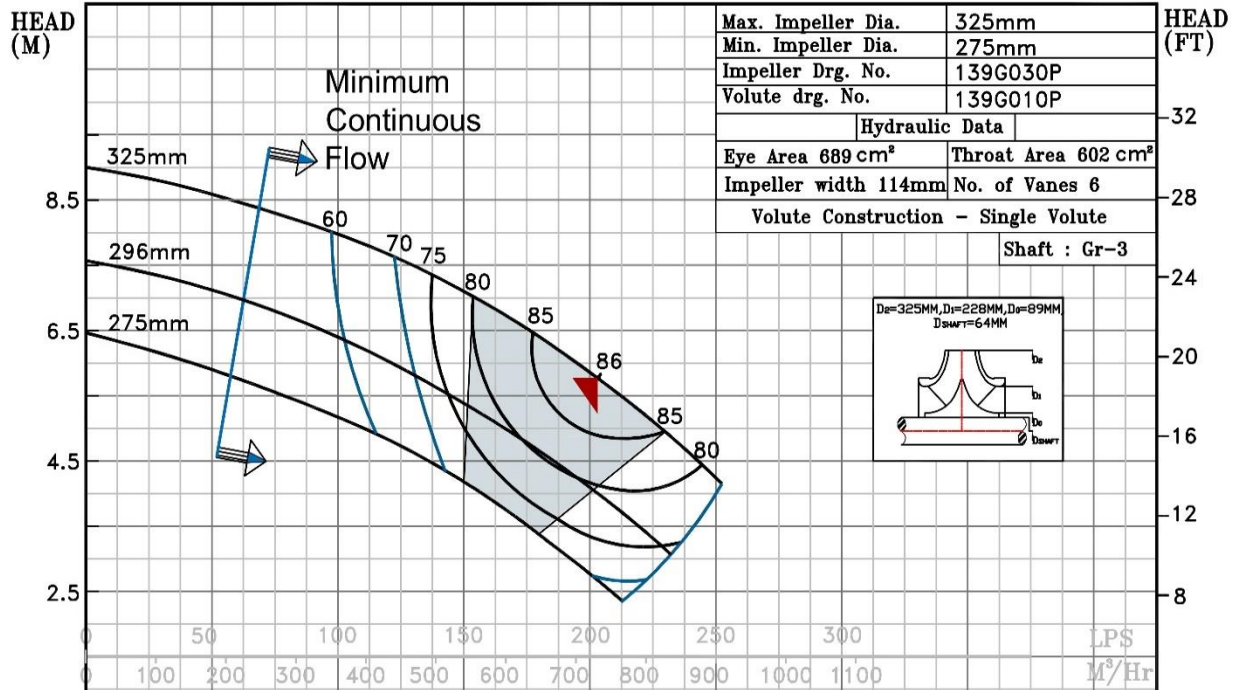


740 RPM

NOTE- PERFORMANCE AS PER ISO 9906 GRADE-2B

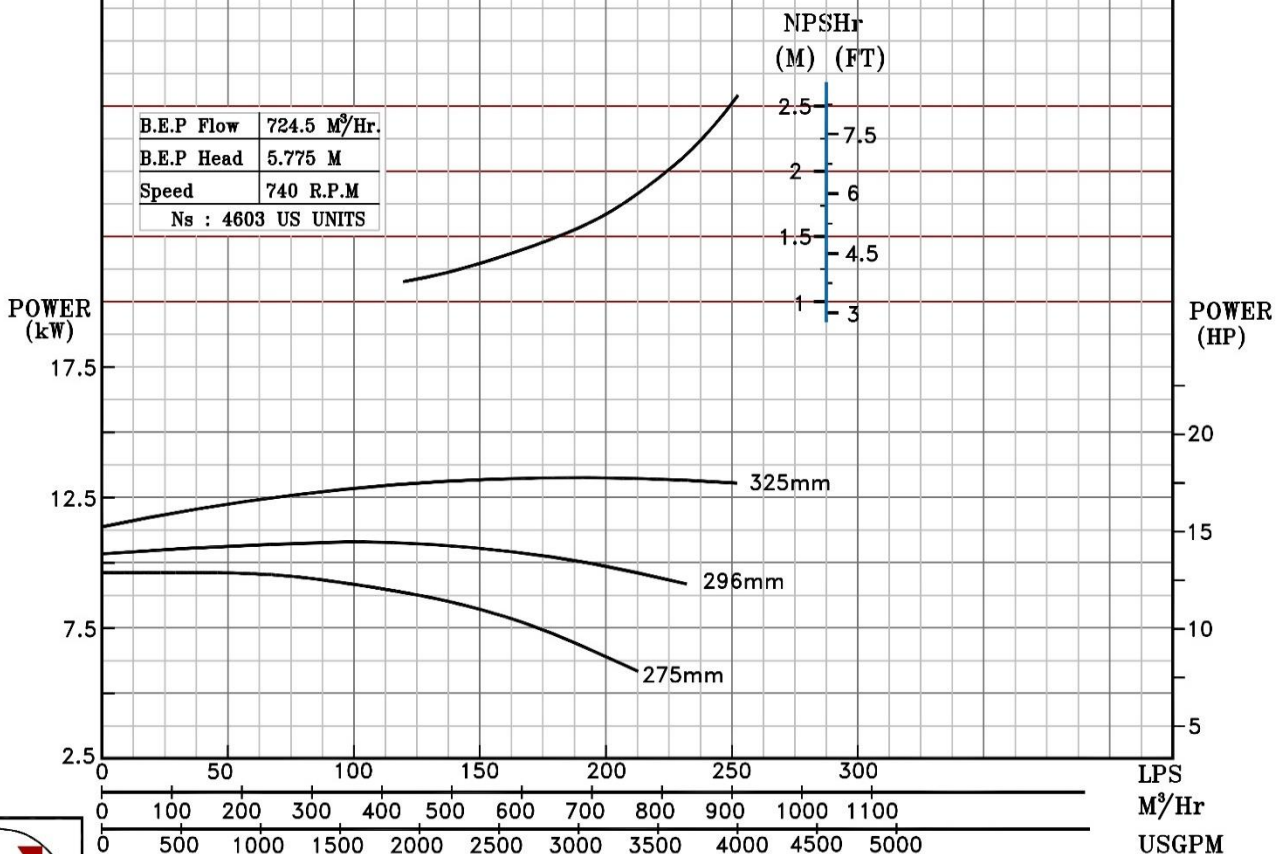
<b>PERFORMANCE CURVE OF 12HS13 @740 R.P.M</b>		12HS13/X/103958		
 <b>PUMPSENSE</b> <i>HS RANGE</i>	<b>MODEL</b> 12HS13	WORKING PRESS.	16 bar	
	SIZE 350x300-325	TEST PRESS.	24 bar	
	TYPE-AXIALLY SPLIT CASE SINGLE STAGE		SPEED 740 rpm	

SHADED REGION ON THE H-Q CURVE REPRESENTS OPTIMUM SELECTION ZONE  
 PUMP PERFORMANCE CHARACTERISTICS COMPUTED BASED ON CLEAN COLD WATER S.G 1.0



Max. Impeller Dia.	325mm
Min. Impeller Dia.	275mm
Impeller Drg. No.	139G030P
Volute drg. No.	139G010P
Hydraulic Data	
Eye Area 689 cm <sup>2</sup>	Throat Area 602 cm <sup>2</sup>
Impeller width 114mm	No. of Vanes 6
Volute Construction - Single Volute	
Shaft : Gr-3	

B.E.P Flow	724.5 M <sup>3</sup> /Hr.
B.E.P Head	5.775 M
Speed	740 R.P.M
Ns : 4603 US UNITS	



740 RPM

NOTE- PERFORMANCE AS PER ISO 9906 GRADE-2B

PERFORMANCE CURVE OF 12HS15 @740 R.P.M

12HS15/X/104058



PUMPSENSE

HS RANGE

MODEL 12HS15

WORKING PRESS. 10 bar

SIZE 350x300-380

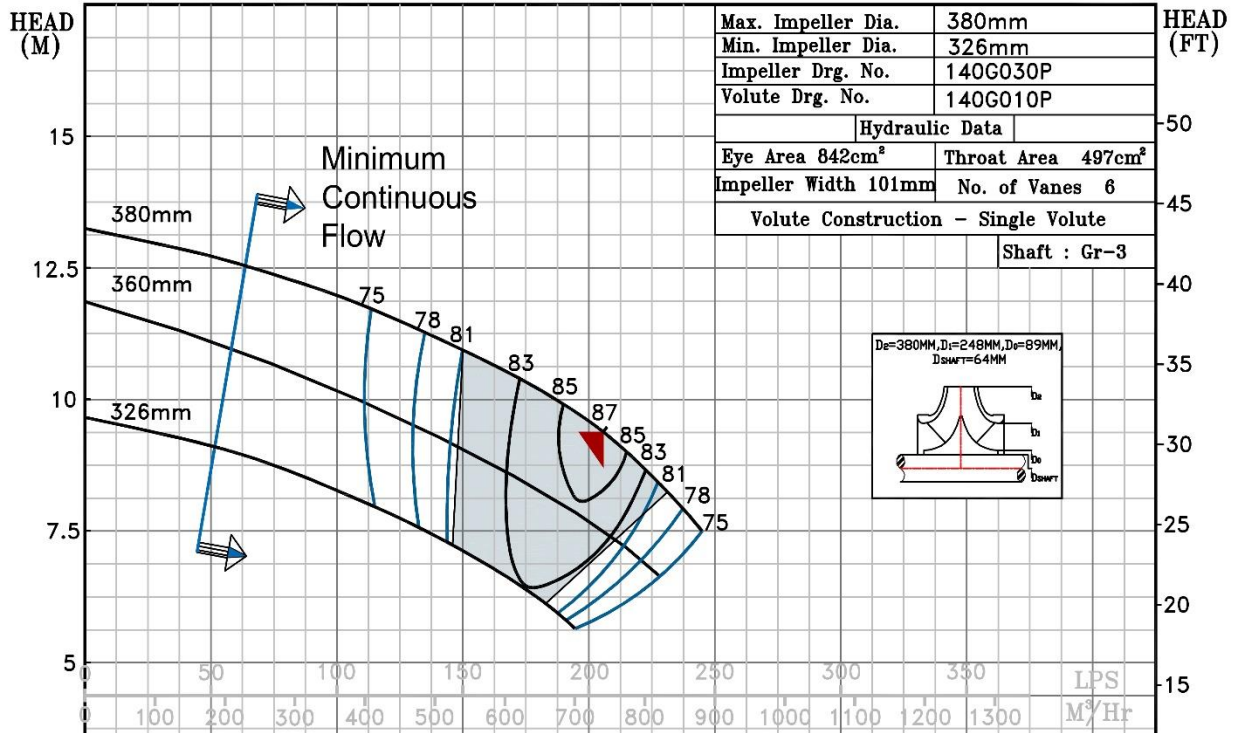
TEST PRESS. 15 bar

TYPE-AXIALLY SPLIT CASE SINGLE STAGE

SPEED 740 rpm

SHADED REGION ON THE H-Q CURVE REPRESENTS OPTIMUM SELECTION ZONE

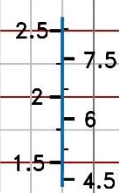
PUMP PERFORMANCE CHARACTERISTICS COMPUTED BASED ON CLEAN COLD WATER S.G 1.0



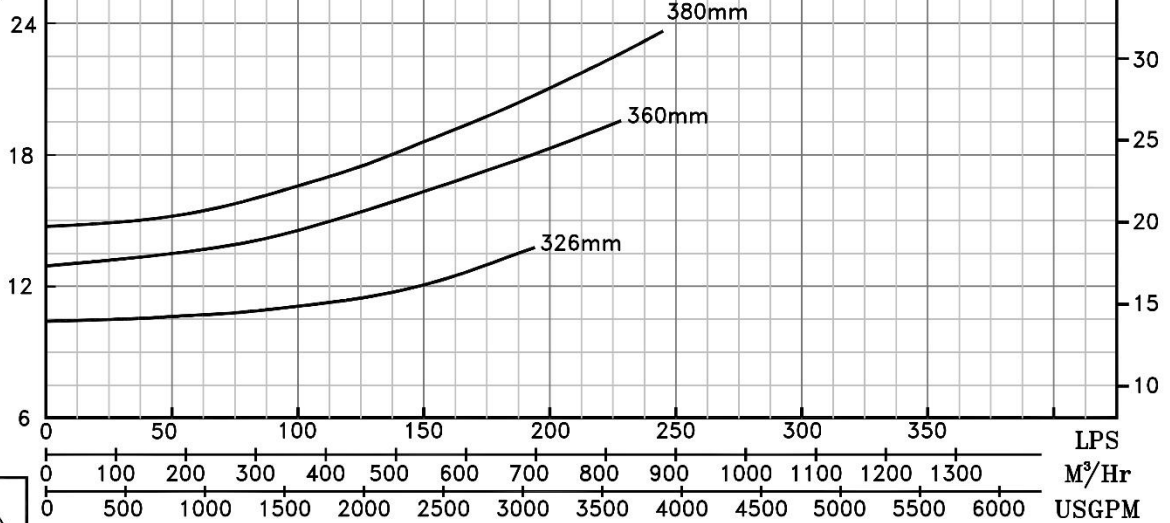
Max. Impeller Dia.	380mm
Min. Impeller Dia.	326mm
Impeller Drg. No.	140G030P
Volute Drg. No.	140G010P
Hydraulic Data	
Eye Area 842cm <sup>2</sup>	Throat Area 497cm <sup>2</sup>
Impeller Width 101mm	No. of Vanes 6
Volute Construction - Single Volute	
Shaft : Gr-3	

B.E.P Flow	741.5 M <sup>3</sup> /Hr.
B.E.P Head	9.38 M
Speed	740 R.P.M
Ns : 3238 US UNITS	

NPSHr  
(M) (FT)



POWER  
(kW)



740 RPM

NOTE- PERFORMANCE AS PER ISO 9906 GRADE-2B

PERFORMANCE CURVE OF 12HS16 @740 R.P.M

12HS16/X/104158



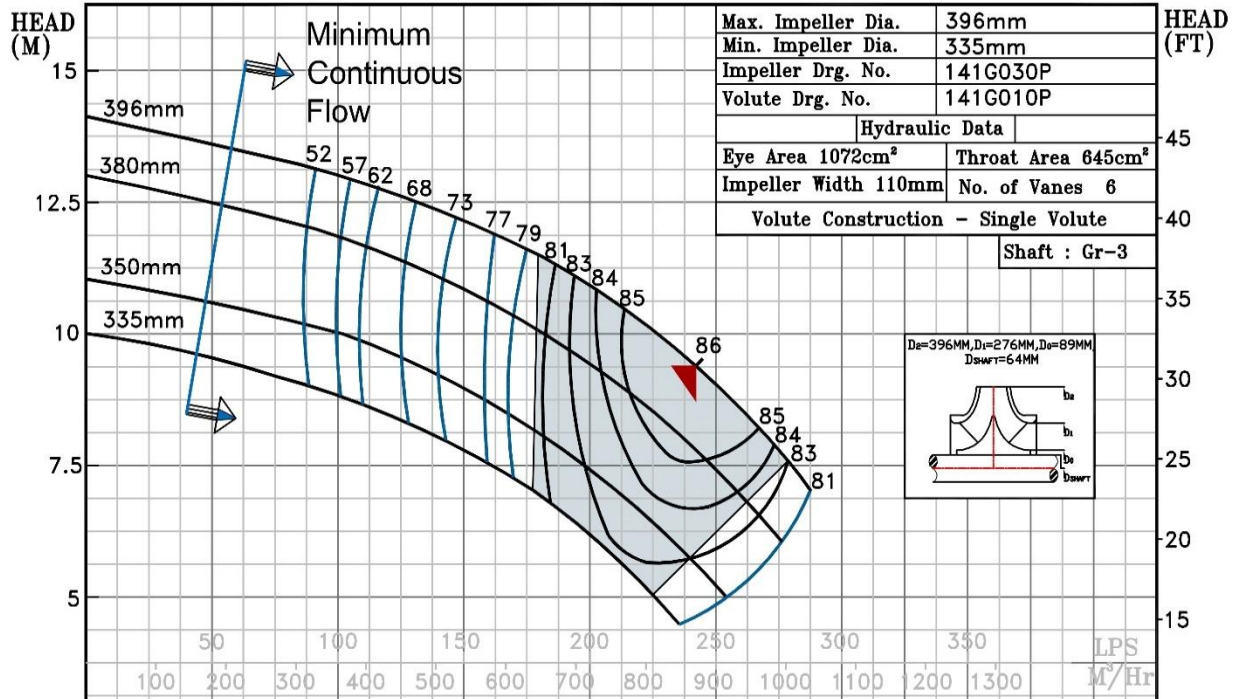
PUMPSENSE

HS RANGE

MODEL	12HS16	WORKING PRESS.	10 bar
SIZE	400x300-396	TEST PRESS.	15 bar
TYPE-AXIALLY SPLIT CASE SINGLE STAGE		SPEED 740 rpm	

SHADED REGION ON THE H-Q CURVE REPRESENTS OPTIMUM SELECTION ZONE

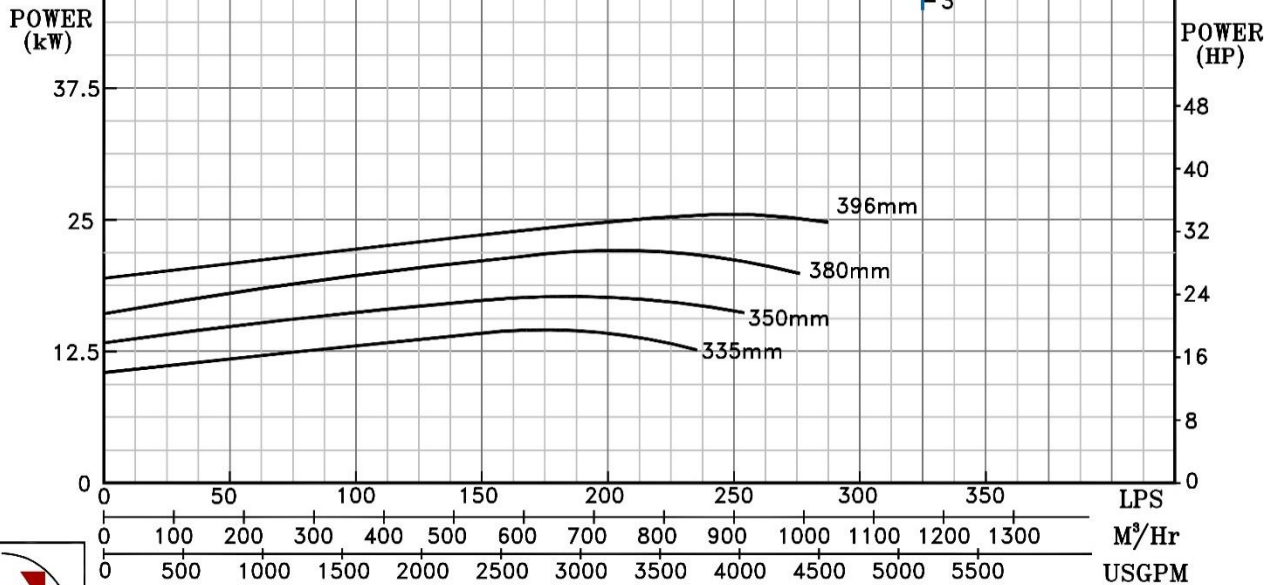
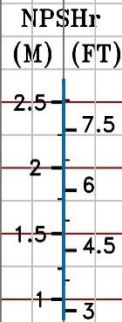
PUMP PERFORMANCE CHARACTERISTICS COMPUTED BASED ON CLEAN COLD WATER S.G 1.0



Max. Impeller Dia.	396mm
Min. Impeller Dia.	335mm
Impeller Drg. No.	141G030P
Volute Drg. No.	141G010P
Hydraulic Data	
Eye Area 1072cm <sup>2</sup>	Throat Area 645cm <sup>2</sup>
Impeller Width 110mm	No. of Vanes 6
Volute Construction - Single Volute	


Shaft : Gr-3

B.E.P Flow	871.5 M <sup>3</sup> /Hr.
B.E.P Head	9.4 M
Speed	740 R.P.M
Ns : 3503 US UNITS	

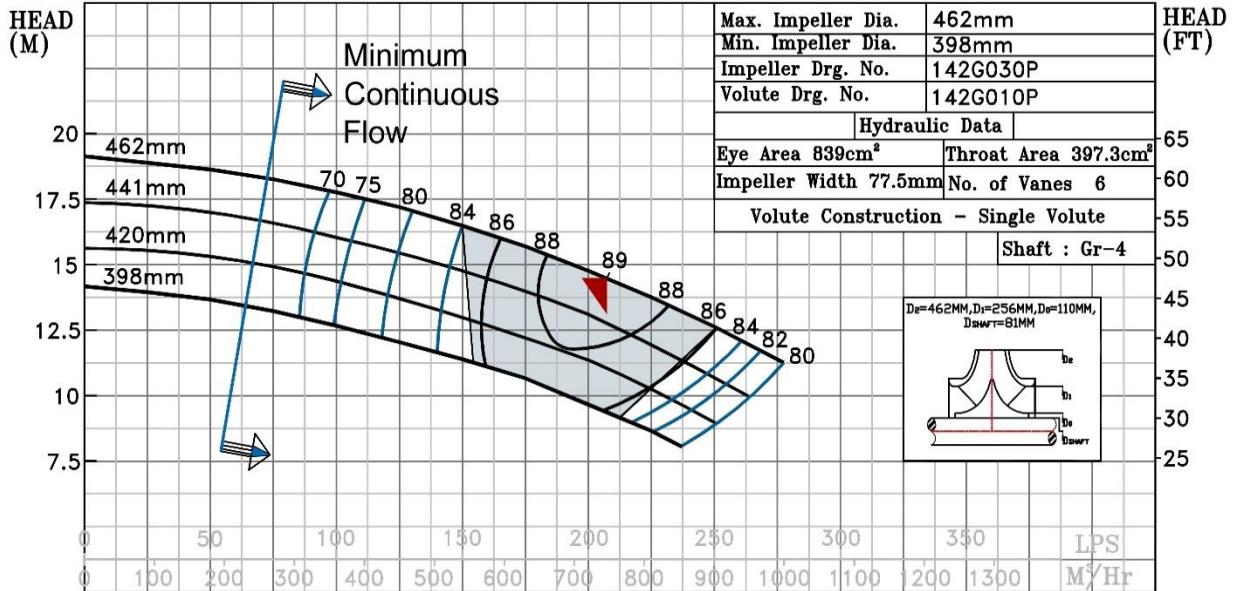


740 RPM

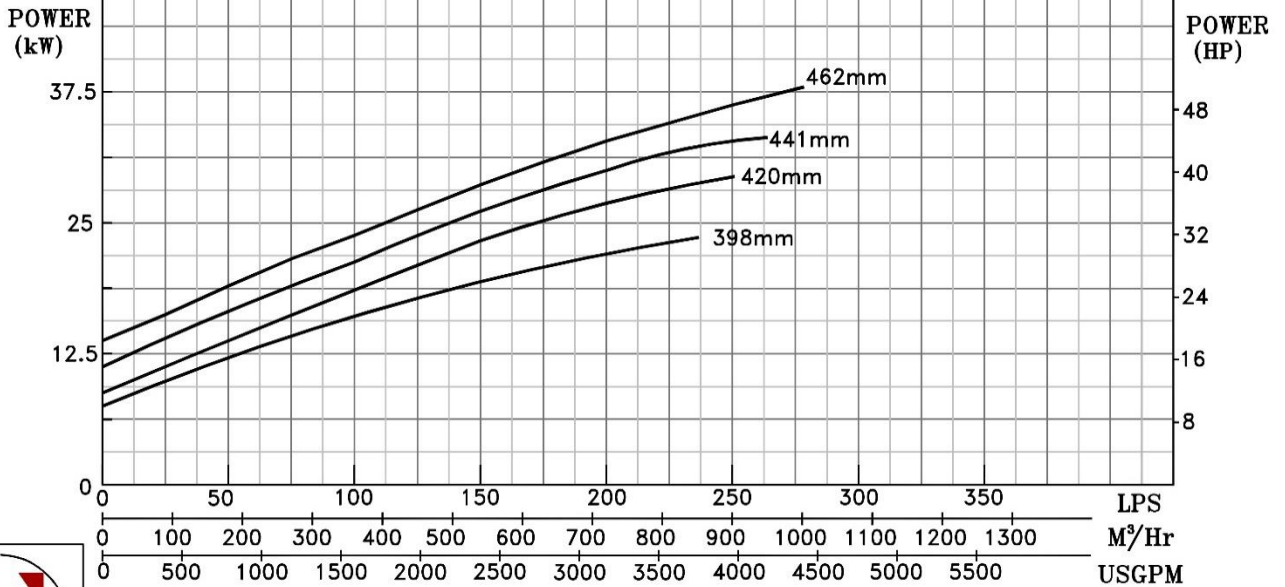
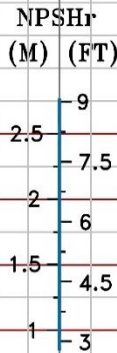
NOTE- PERFORMANCE AS PER ISO 9906 GRADE-2B

PERFORMANCE CURVE OF 12HS18 @740 R.P.M		12HS18/Y/104258	
 <b>PUMPSENSE</b> <i>HS RANGE</i>	<b>MODEL</b> 12HS18	WORKING PRESS.	10 bar
	SIZE 350x300-462	TEST PRESS.	15 bar
	TYPE-AXIALLY SPLIT CASE SINGLE STAGE		
	SPEED 740 rpm		

SHADED REGION ON THE H-Q CURVE REPRESENTS OPTIMUM SELECTION ZONE  
 PUMP PERFORMANCE CHARACTERISTICS COMPUTED BASED ON CLEAN COLD WATER S.G 1.0




B.E.P Flow	747 M <sup>3</sup> /Hr.
B.E.P Head	14.5 M
Speed	740 R.P.M
Ns : 2343 US UNITS	

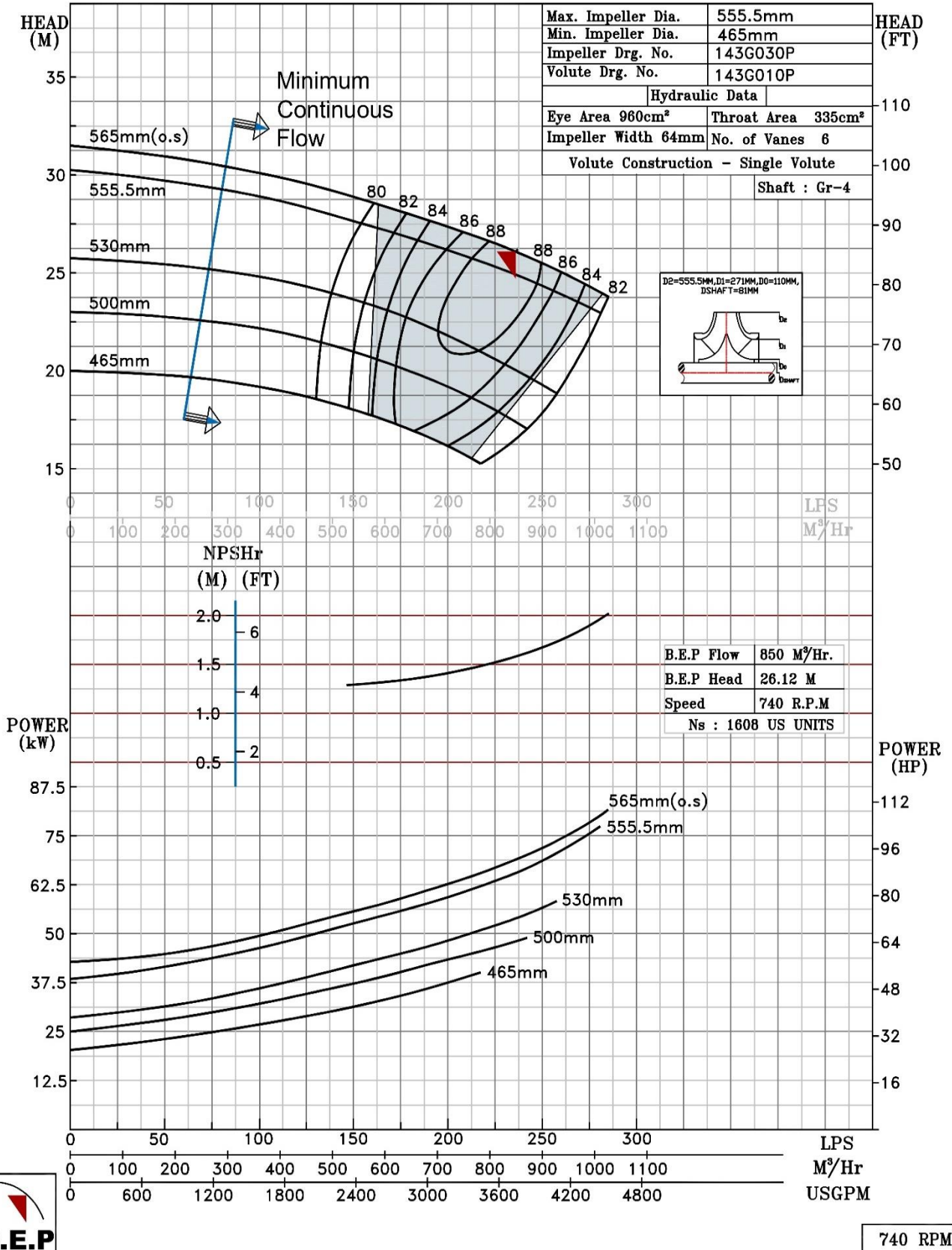


740 RPM


NOTE- PERFORMANCE AS PER ISO 9906 GRADE-2B

PERFORMANCE CURVE OF 12HS22 @740 R.P.M		12HS22/X/104358	
 <b>PUMPSENSE</b> <i>HS RANGE</i>	<b>MODEL 12HS22</b>	WORKING PRESS.	10 bar
	SIZE 350x300-555.5	TEST PRESS.	15 bar
	TYPE-AXIALLY SPLIT CASE SINGLE STAGE		
	SPEED 740 rpm		

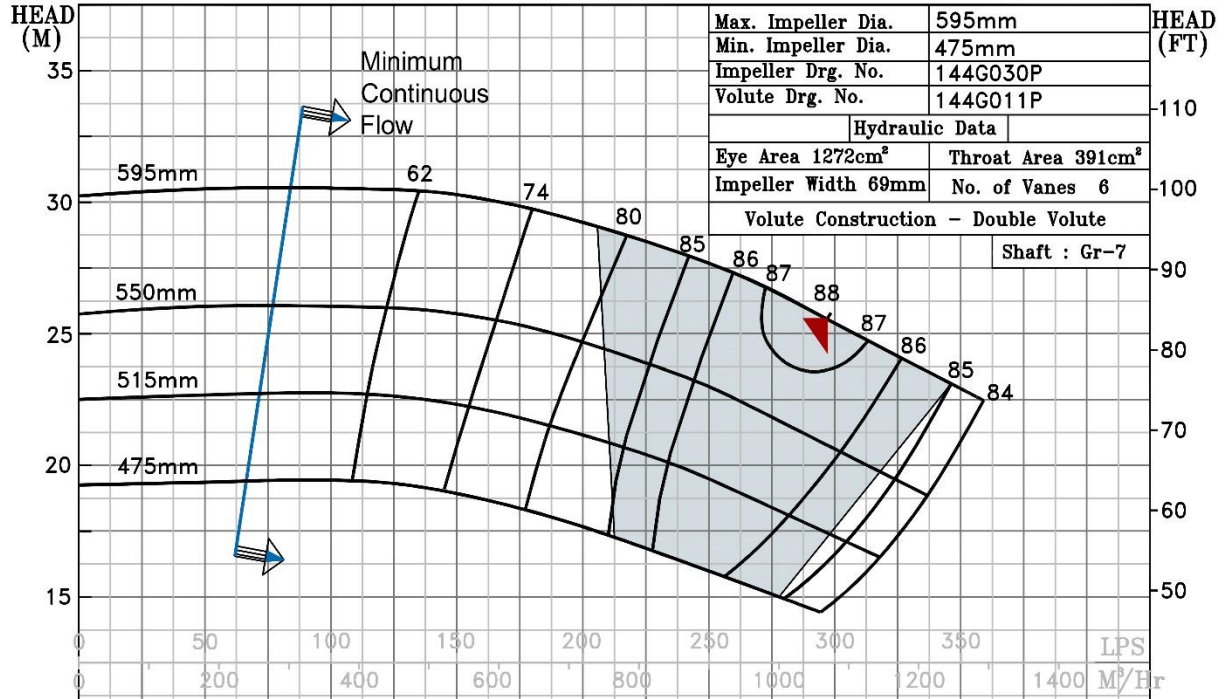
SHADED REGION ON THE H-Q CURVE REPRESENTS OPTIMUM SELECTION ZONE  
 PUMP PERFORMANCE CHARACTERISTICS COMPUTED BASED ON CLEAN COLD WATER S.G 1.0



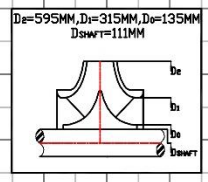
NOTE- PERFORMANCE AS PER ISO 9906 GRADE-2B

<b>PERFORMANCE CURVE OF 12HS23 @740 R.P.M</b>		12HS23/X/104458	
 <b>PUMPSense</b> <i>HS RANGE</i>	<b>MODEL</b> 12HS23	WORKING PRESS.	10 bar
	SIZE 350x300-595	TEST PRESS.	15 bar
	TYPE-AXIALLY SPLIT CASE SINGLE STAGE		SPEED 740 rpm

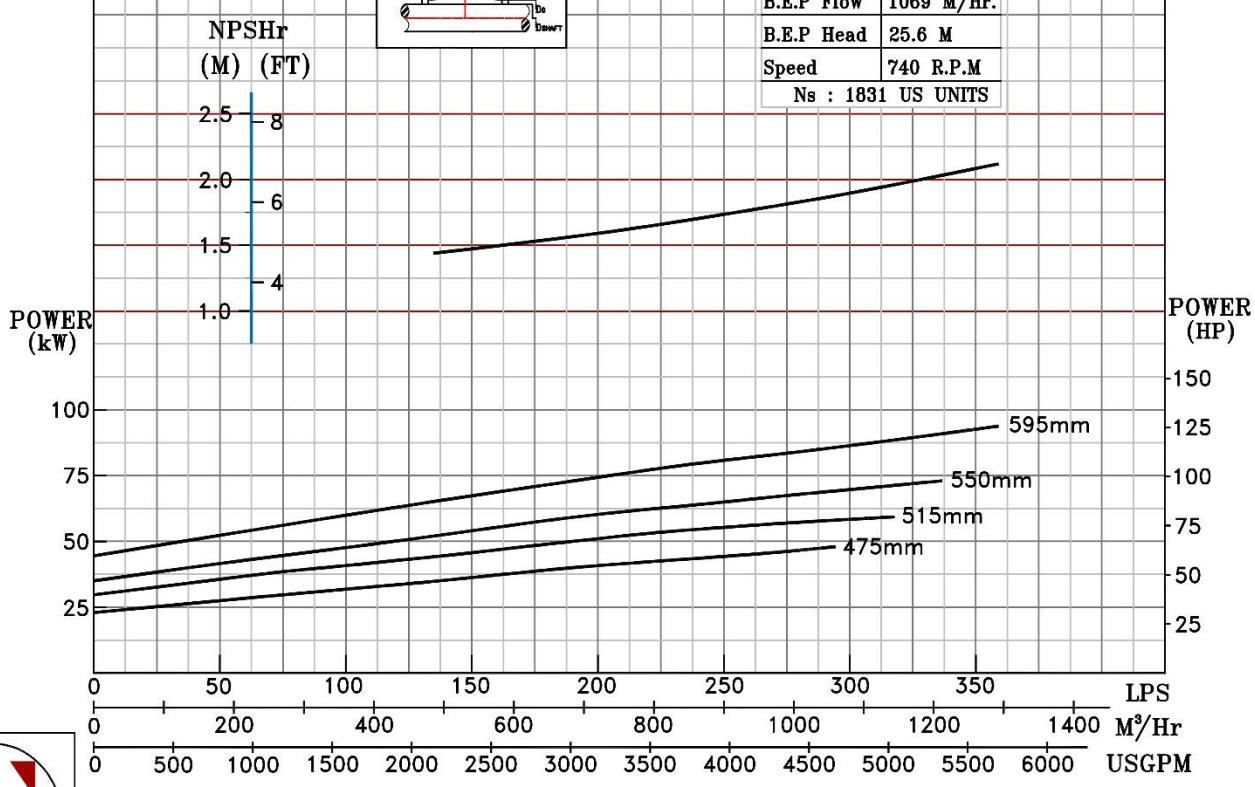
SHADED REGION ON THE H-Q CURVE REPRESENTS OPTIMUM SELECTION ZONE  
 PUMP PERFORMANCE CHARACTERISTICS COMPUTED BASED ON CLEAN COLD WATER S.G 1.0



Max. Impeller Dia.	595mm
Min. Impeller Dia.	475mm
Impeller Drg. No.	144G030P
Volute Drg. No.	144G011P
Hydraulic Data	
Eye Area 1272cm <sup>2</sup>	Throat Area 391cm <sup>2</sup>
Impeller Width 69mm	No. of Vanes 6
Volute Construction - Double Volute	
Shaft : Gr-7	




B.E.P Flow	1069 M <sup>3</sup> /Hr.
B.E.P Head	25.6 M
Speed	740 R.P.M
N <sub>s</sub>	1831 US UNITS



740 RPM

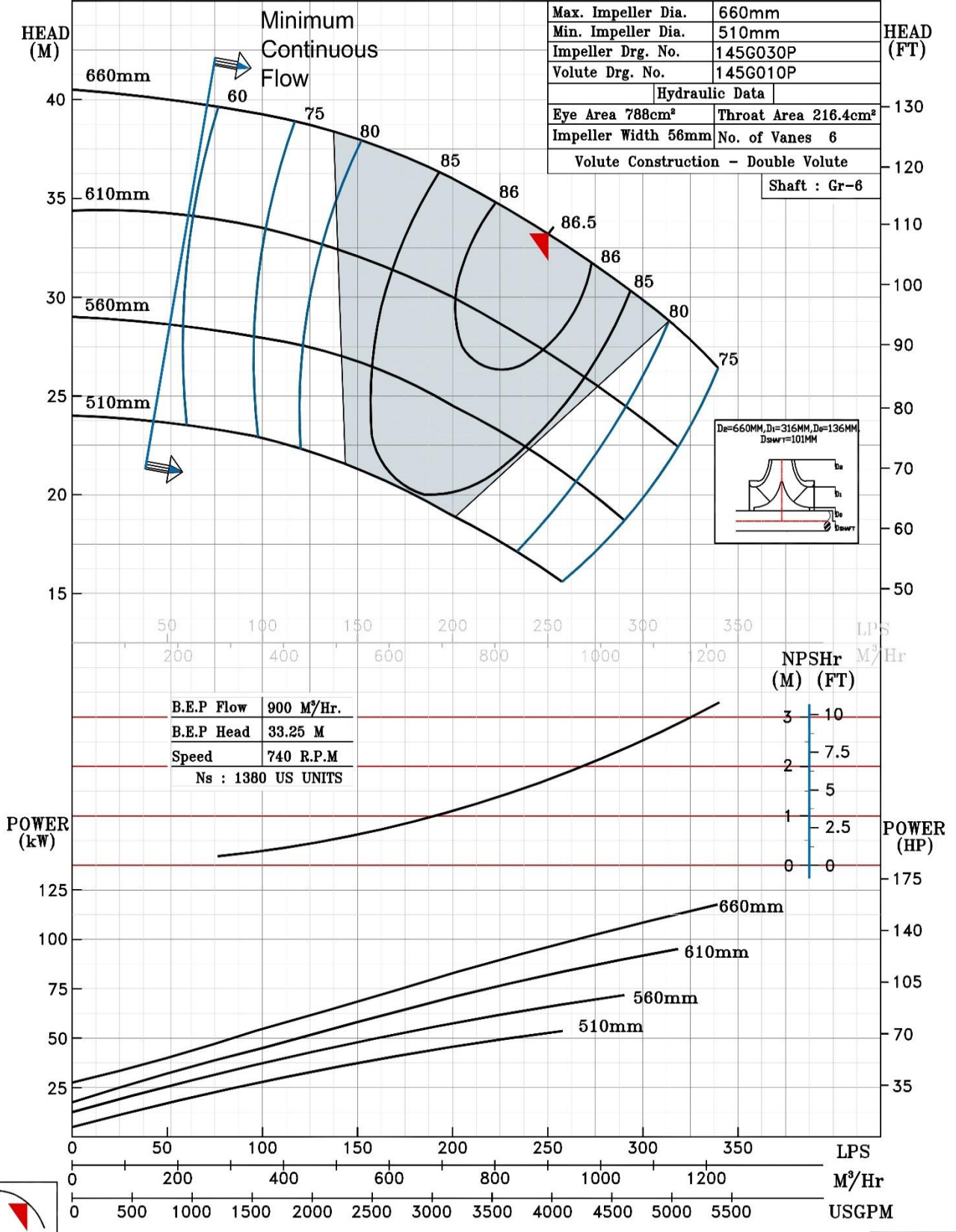


NOTE- PERFORMANCE AS PER ISO 9906 GRADE-2B

<b>PERFORMANCE CURVE OF 12HS26 @740 R.P.M</b>		12HS26/X/104558
 <b>PUMPSENSE</b> <i>HS RANGE</i>	<b>MODEL</b> 12HS26	WORKING PRESS. 10 bar
	SIZE 350x300-660	TEST PRESS. 15 bar
	TYPE-AXIALLY SPLIT CASE SINGLE STAGE	
	SPEED 740 rpm	

SHADED REGION ON THE H-Q CURVE REPRESENTS OPTIMUM SELECTION ZONE

PUMP PERFORMANCE CHARACTERISTICS COMPUTED BASED ON CLEAN COLD WATER S.G 1.0



NOTE- PERFORMANCE AS PER ISO 9906 GRADE-2B

PERFORMANCE CURVE OF 14HS16 @740 R.P.M

14HS16/Y/114658



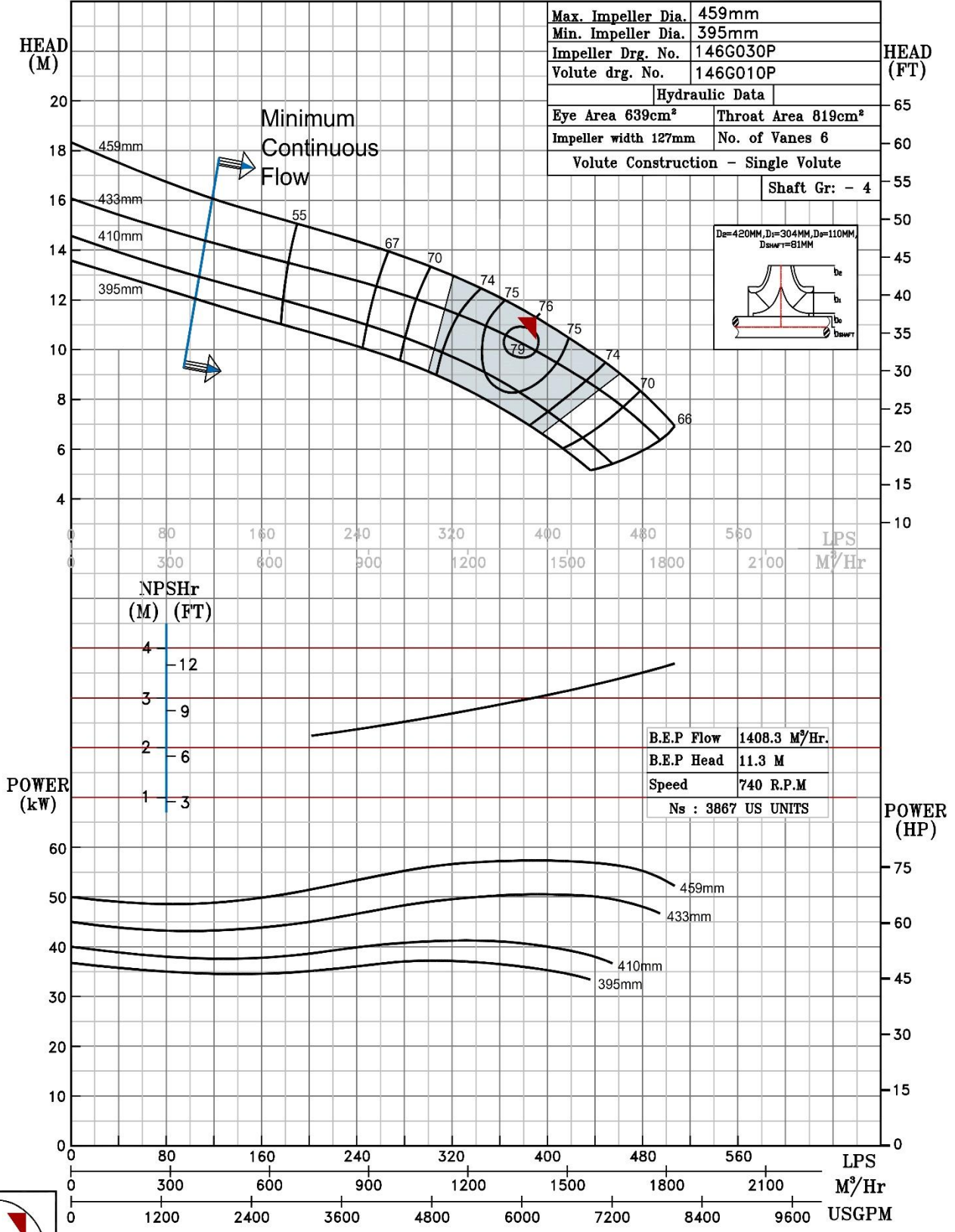
PUMPSENSE

HS RANGE

MODEL 14HS16	WORKING PRESS. 10 bar
SIZE 400X350-459	TEST PRESS. 15 bar
TYPE-AXIALLY SPLIT CASE SINGLE STAGE	
SPEED 740 rpm	

SHADED REGION ON THE H-Q CURVE REPRESENTS OPTIMUM SELECTION ZONE

PUMP PERFORMANCE CHARACTERISTICS COMPUTED BASED ON CLEAN COLD WATER S.G 1.0



740 RPM

NOTE- PERFORMANCE AS PER ISO 9906 GRADE-2B

PERFORMANCE CURVE OF 14HS19 @740 R.P.M

14HS19/X/104758



PUMPSENSE

HS RANGE

MODEL 14HS19

WORKING PRESS. 10 bar

SIZE 450x350-475

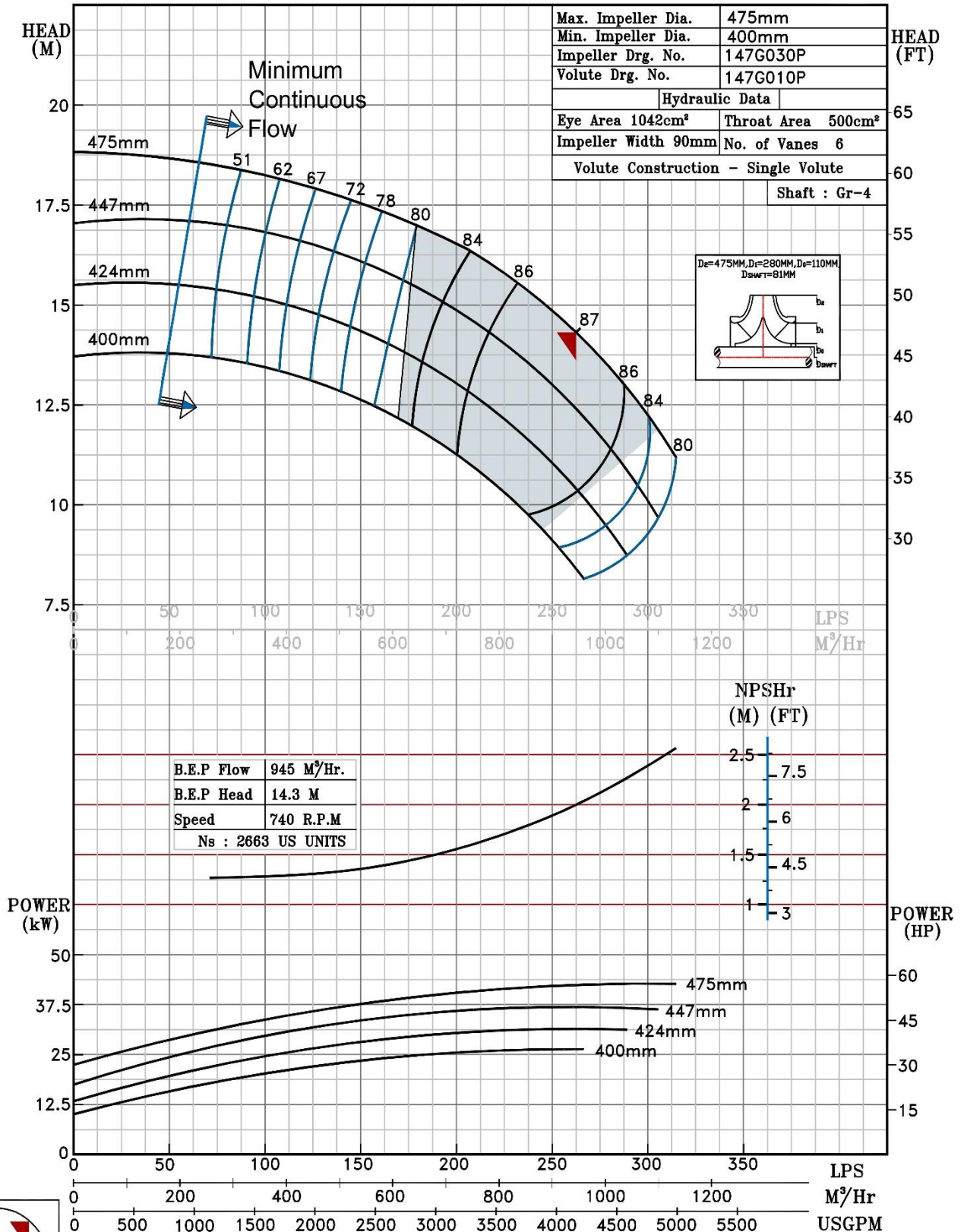
TEST PRESS. 15 bar

TYPE-AXIALLY SPLIT CASE SINGLE STAGE

SPEED 740 rpm

SHADED REGION ON THE H-Q CURVE REPRESENTS OPTIMUM SELECTION ZONE

PUMP PERFORMANCE CHARACTERISTICS COMPUTED BASED ON CLEAN COLD WATER S.G 1.0




B.E.P Flow	945 M³/Hr.
B.E.P Head	14.3 M
Speed	740 R.P.M
Ns	: 2663 US UNITS

Max. Impeller Dia.	475mm
Min. Impeller Dia.	400mm
Impeller Drg. No.	147G030P
Volute Drg. No.	147G010P
Hydraulic Data	
Eye Area 1042cm²	Throat Area 500cm²
Impeller Width 90mm	No. of Vanes 6
Volute Construction - Single Volute	
Shaft : Gr-4	

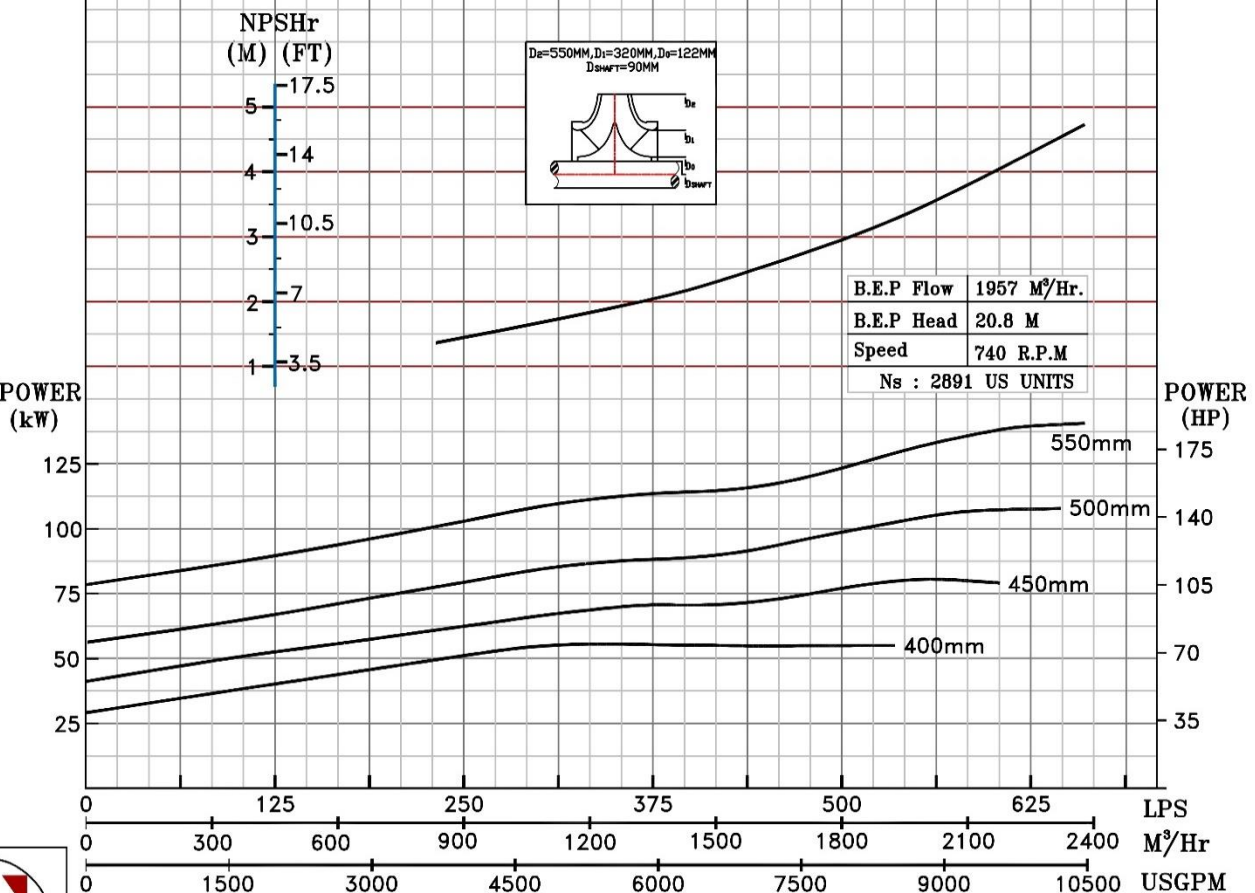
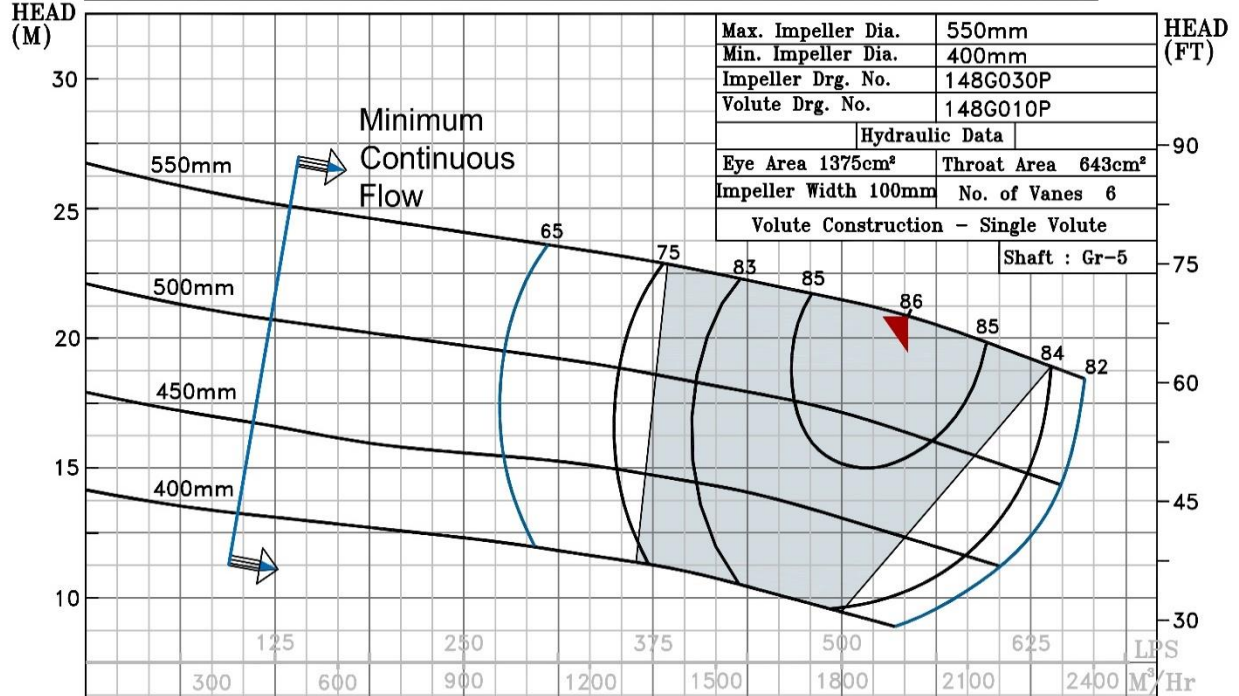


740 RPM

NOTE- PERFORMANCE AS PER ISO 9906 GRADE-2B


PERFORMANCE CURVE OF 14HS21 @740 R.P.M		14HS21/X/104858		
 <b>PUMPSENSE</b> <i>HS RANGE</i>	<b>MODEL</b> 14HS21	WORKING PRESS.	10 bar	
	SIZE 400x350-550	TEST PRESS.	15 bar	
	TYPE-AXIALLY SPLIT CASE SINGLE STAGE		SPEED 740 rpm	

SHADED REGION ON THE H-Q CURVE REPRESENTS OPTIMUM SELECTION ZONE  
 PUMP PERFORMANCE CHARACTERISTICS COMPUTED BASED ON CLEAN COLD WATER S.G 1.0



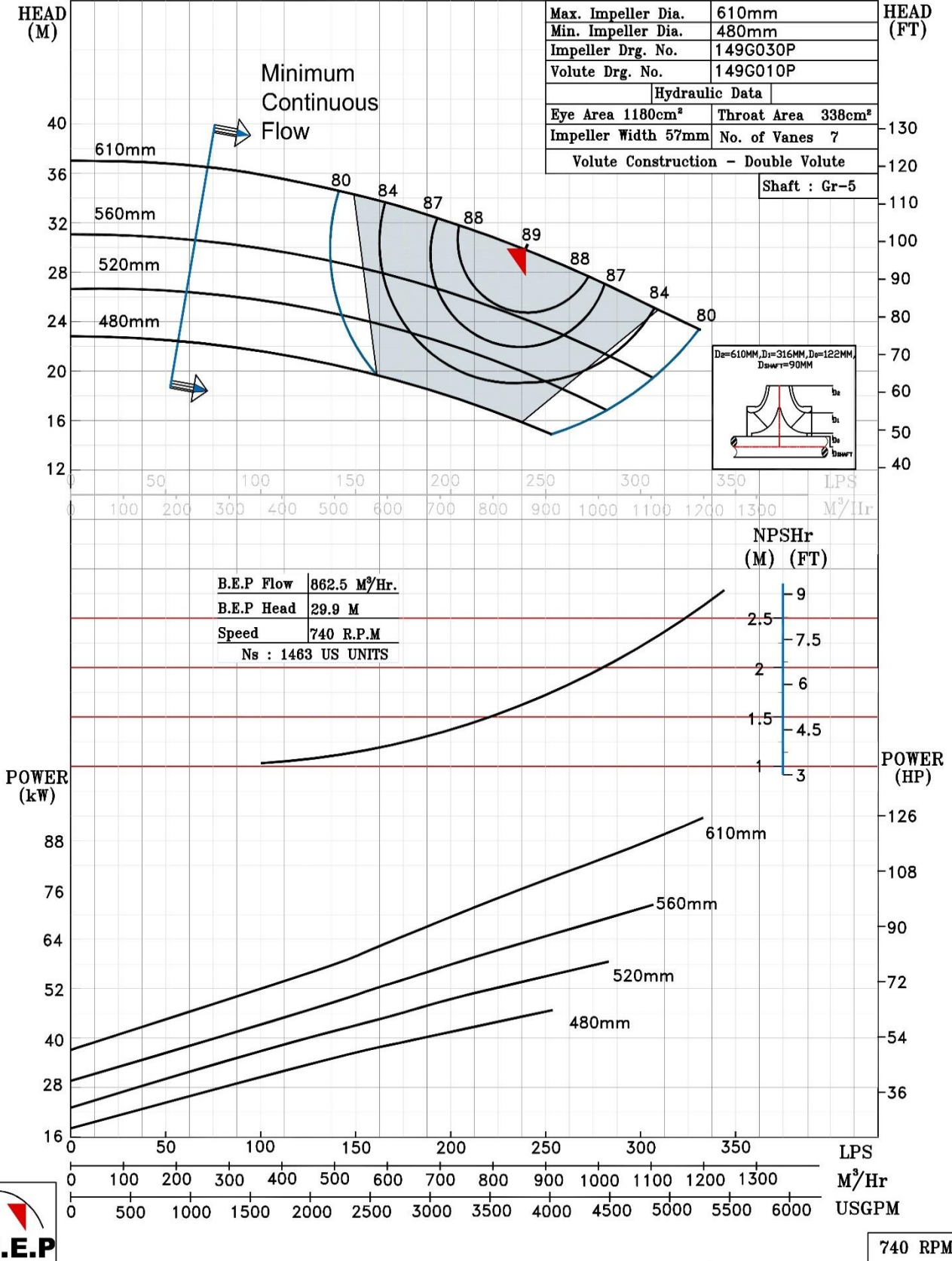
740 RPM

NOTE- PERFORMANCE AS PER ISO 9906 GRADE-2B

<b>PERFORMANCE CURVE OF 14HS24 @740 R.P.M</b>		14HS24/X/104958	
 <b>PUMPSENSE</b> <i>HS RANGE</i>	<b>MODEL</b> 14HS24	WORKING PRESS.	10 bar
	SIZE 400x350-610	TEST PRESS.	15 bar
	TYPE-AXIALLY SPLIT CASE SINGLE STAGE		
	SPEED 740 rpm		


SHADED REGION ON THE H-Q CURVE REPRESENTS OPTIMUM SELECTION ZONE

PUMP PERFORMANCE CHARACTERISTICS COMPUTED BASED ON CLEAN COLD WATER S.G. 1.0

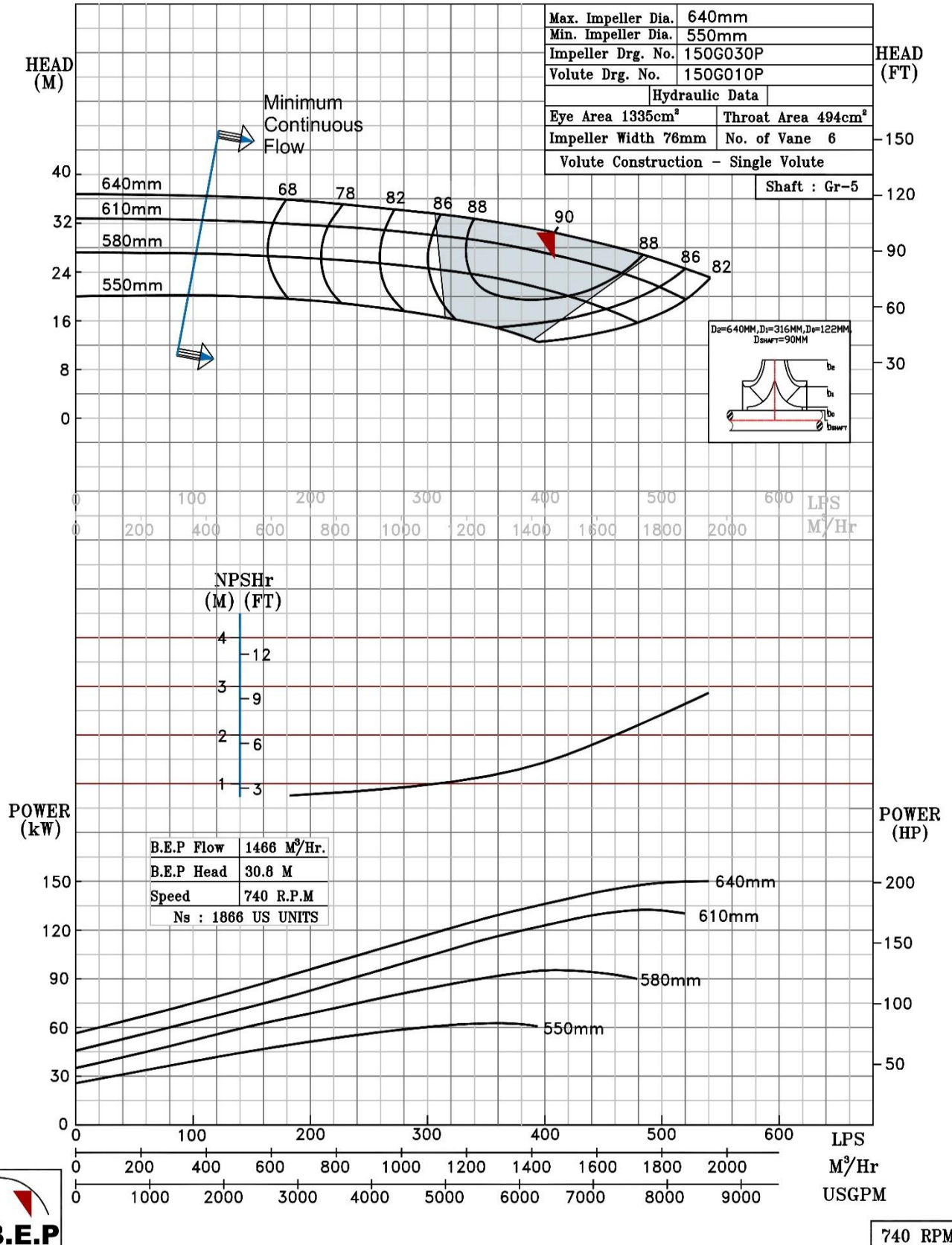


740 RPM

NOTE- PERFORMANCE AS PER ISO 9906 GRADE-2B

PERFORMANCE CURVE OF 14HS25 @740 R.P.M		14HS25/X/105058	
 <b>PUMPSENSE</b> <i>HS RANGE</i>	<b>MODEL</b> 14HS25	WORKING PRESS.	10 bar
	SIZE 400x350-640	TEST PRESS.	15 bar
	TYPE-AXIALLY SPLIT CASE SINGLE STAGE		
	SPEED 740 rpm		

SHADED REGION ON THE H-Q CURVE REPRESENTS OPTIMUM SELECTION ZONE  
 PUMP PERFORMANCE CHARACTERISTICS COMPUTED BASED ON CLEAN COLD WATER S.G 1.0



NOTE- PERFORMANCE AS PER ISO 9906 GRADE-2B

PERFORMANCE CURVE OF 14HS26 @740 R.P.M

14HS26/X/105158



PUMPSENSE

HS RANGE

MODEL 14HS26

WORKING PRESS. 10 bar

SIZE 400x350-642

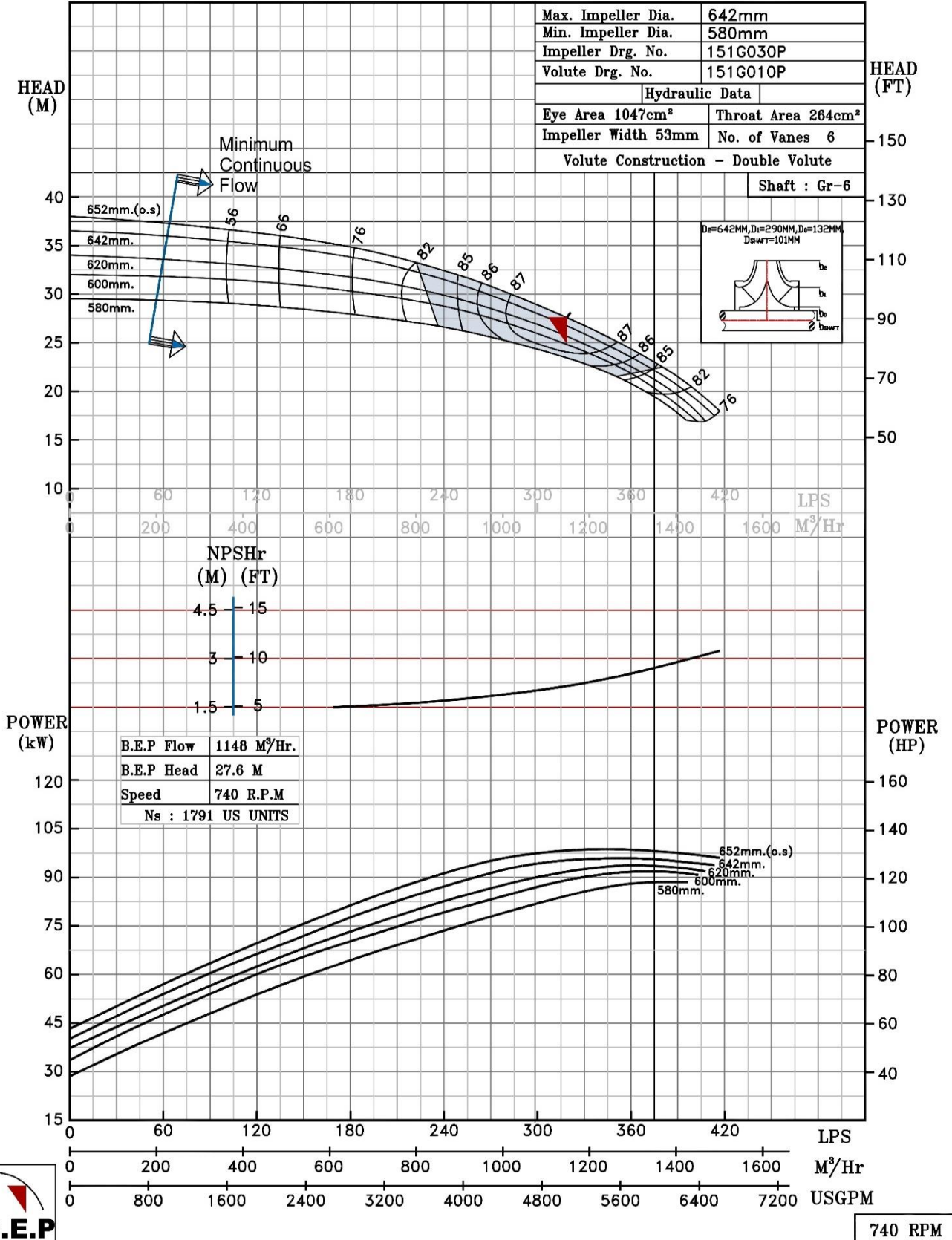
TEST PRESS. 15 bar

TYPE-AXIALLY SPLIT CASE SINGLE STAGE

SPEED 740 rpm


SHADED REGION ON THE H-Q CURVE REPRESENTS OPTIMUM SELECTION ZONE

PUMP PERFORMANCE CHARACTERISTICS COMPUTED BASED ON CLEAN COLD WATER S.G 1.0

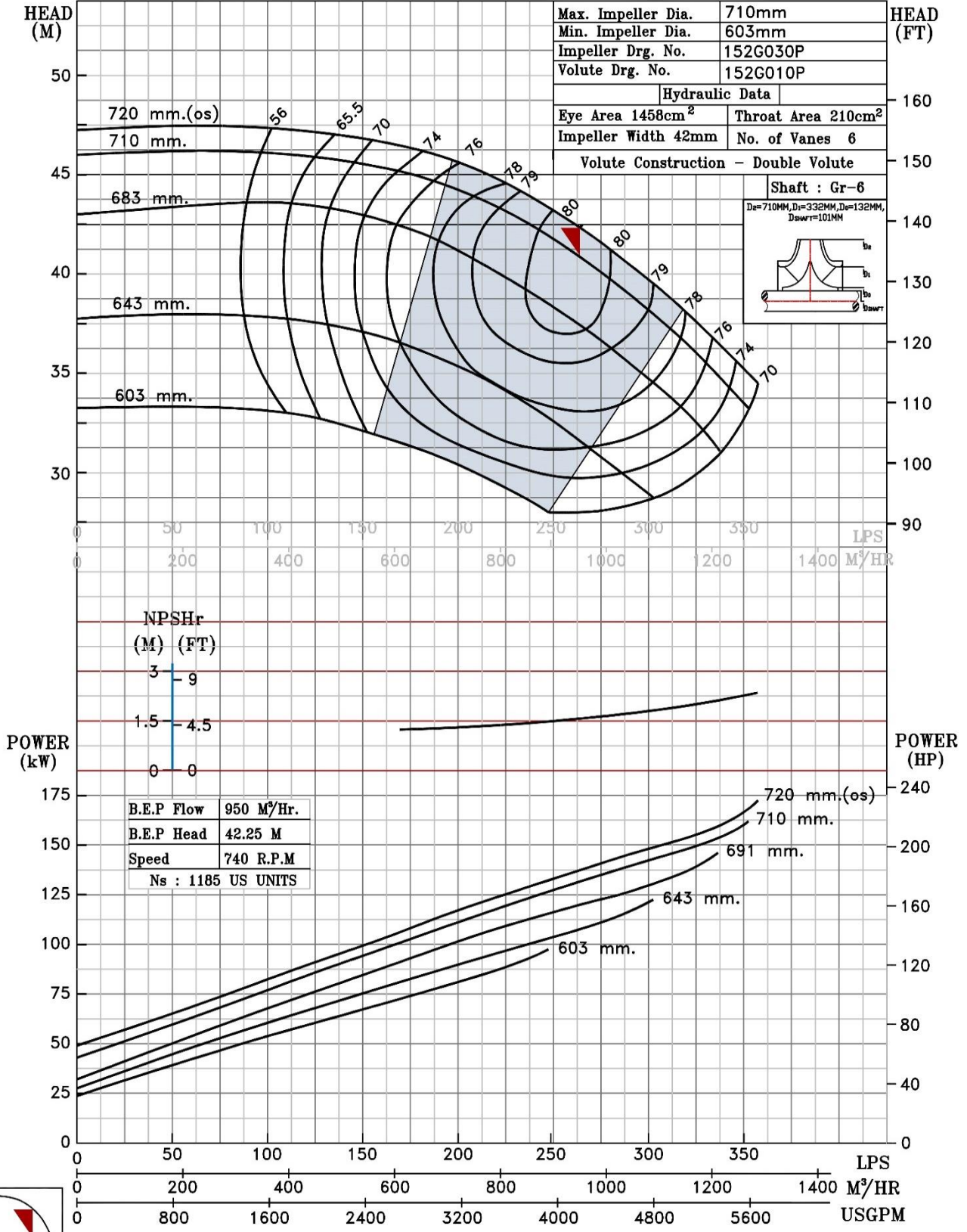


740 RPM

NOTE- PERFORMANCE AS PER ISO 9906 GRADE-2B

<b>PERFORMANCE CURVE OF 14HS28 @740 R.P.M</b>		14HS28/X/105258	
 <b>PUMPSENSE</b> <i>HS RANGE</i>	<b>MODEL</b> 14HS28	WORKING PRESS.	10 bar
	SIZE 450x350-710	TEST PRESS.	15 bar
	TYPE-AXIALLY SPLIT CASE SINGLE STAGE		
	SPEED 740 rpm		

SHADED REGION ON THE H-Q CURVE REPRESENTS OPTIMUM SELECTION ZONE  
 PUMP PERFORMANCE CHARACTERISTICS COMPUTED BASED ON CLEAN COLD WATER S.G. 1.0




B.E.P Flow	950 M³/HR.
B.E.P Head	42.25 M
Speed	740 R.P.M
Ns	1185 US UNITS



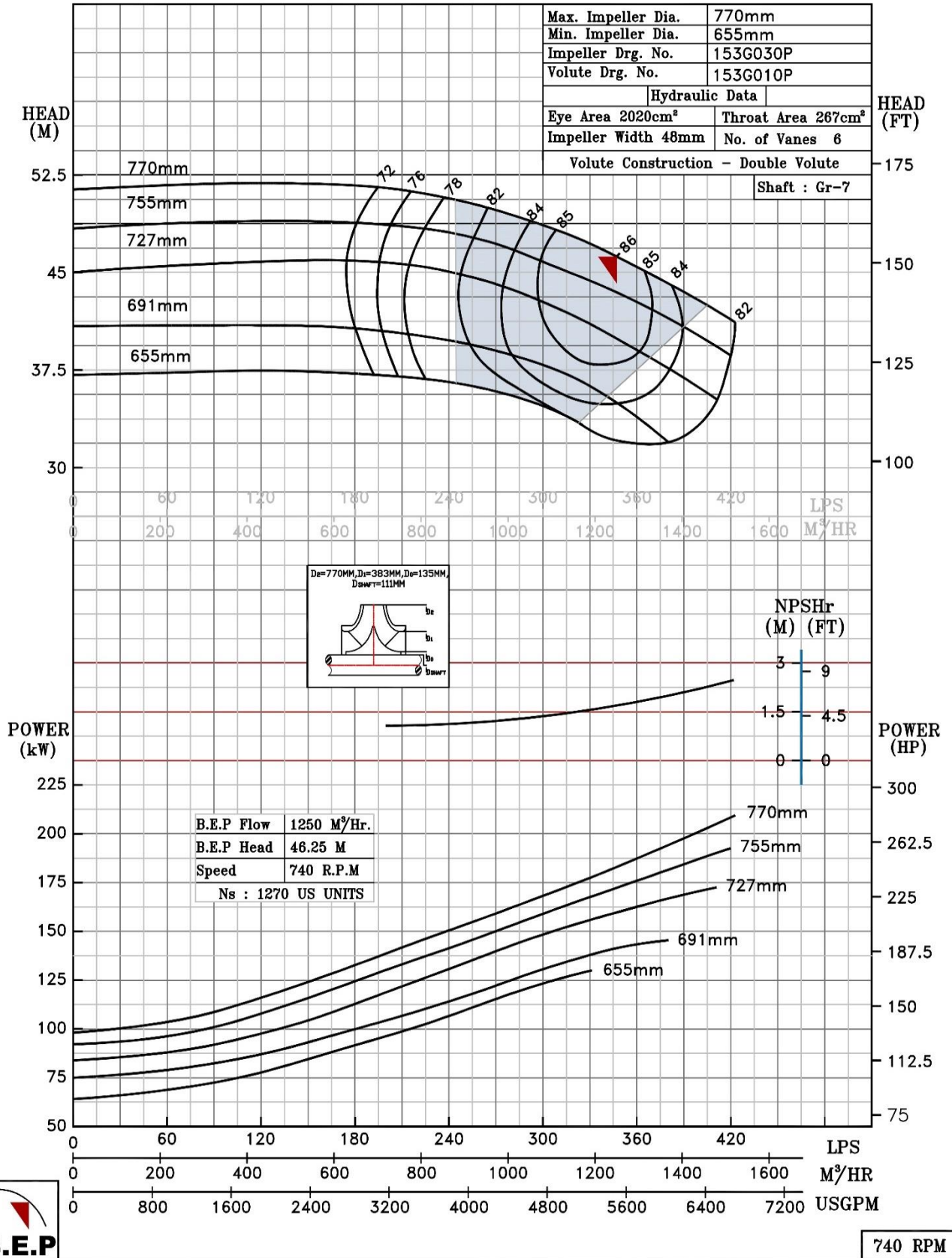
740 RPM




NOTE- PERFORMANCE AS PER ISO 9906 GRADE-2B

PERFORMANCE CURVE OF 14HS30 @740 R.P.M		14HS30/X/105358		
 <b>PUMPSENSE</b> <i>HS RANGE</i>	<b>MODEL</b> 14HS30	WORKING PRESS. 10 bar		
	SIZE 450x350-770	TEST PRESS. 15 bar		
	TYPE-AXIALLY SPLIT CASE SINGLE STAGE			
			SPEED 740 rpm	

SHADED REGION ON THE H-Q CURVE REPRESENTS OPTIMUM SELECTION ZONE  
 PUMP PERFORMANCE CHARACTERISTICS COMPUTED BASED ON CLEAN COLD WATER S.G 1.0

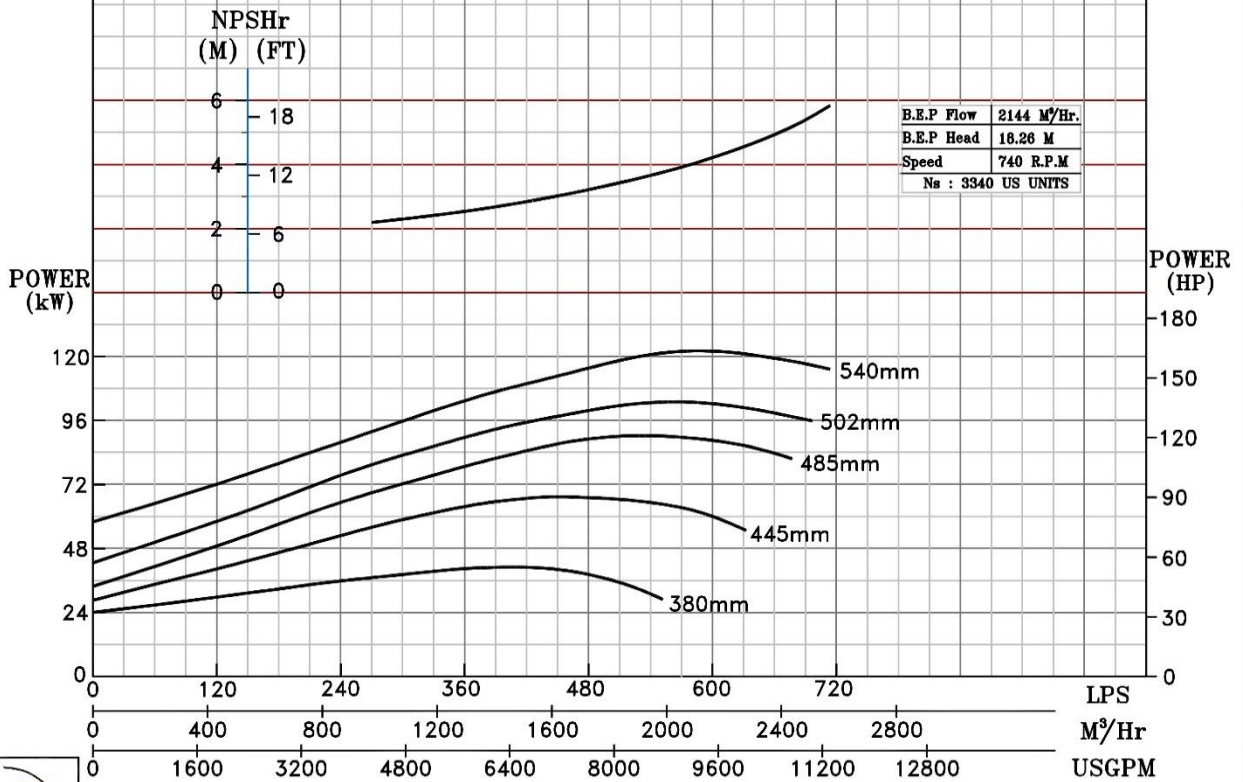
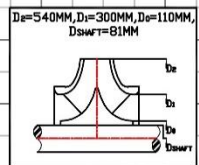
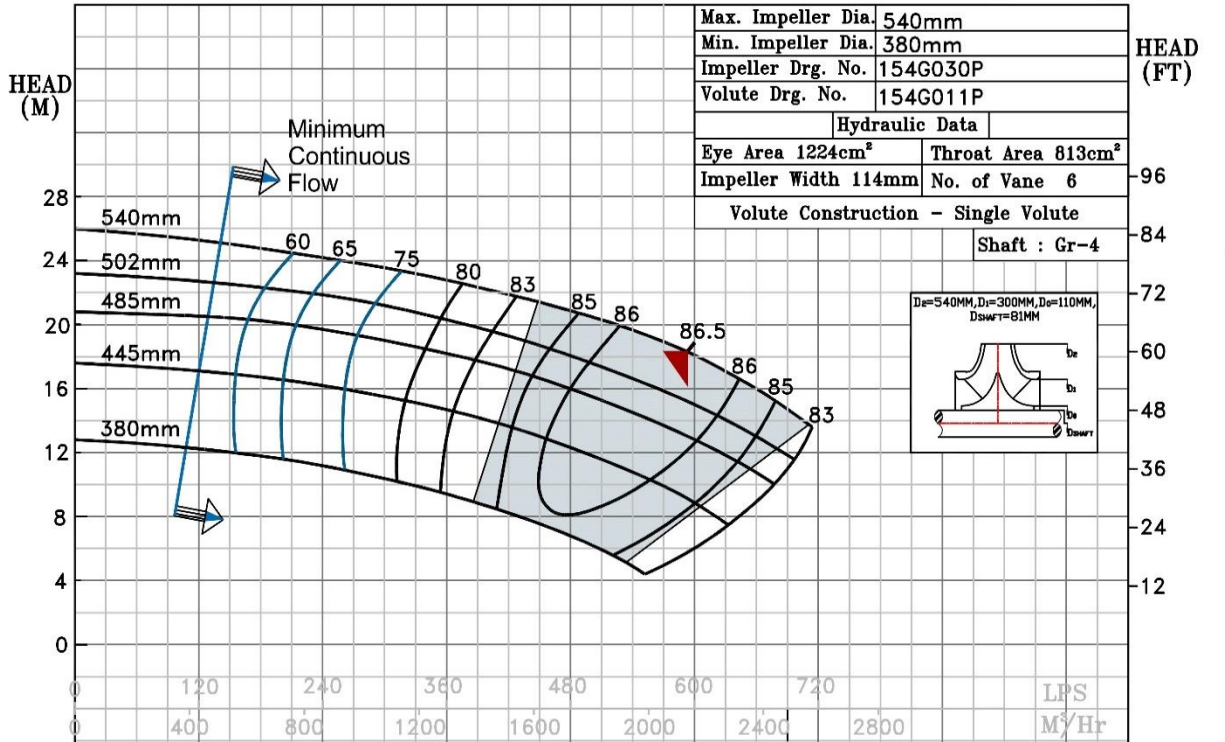


NOTE- PERFORMANCE AS PER ISO 9906 GRADE-2B

<b>PERFORMANCE CURVE OF 16HS21 @740 R.P.M</b>		16HS21/X/105458
 <b>PUMPSense</b> <i>HS RANGE</i>	<b>MODEL</b> 16HS21	WORKING PRESS. 10 bar
	SIZE 500x400-540	TEST PRESS. 15 bar
	TYPE-AXIALLY SPLIT CASE SINGLE STAGE	
SPEED 740 rpm		


SHADED REGION ON THE H-Q CURVE REPRESENTS OPTIMUM SELECTION ZONE

PUMP PERFORMANCE CHARACTERISTICS COMPUTED BASED ON CLEAN COLD WATER S.G 1.0

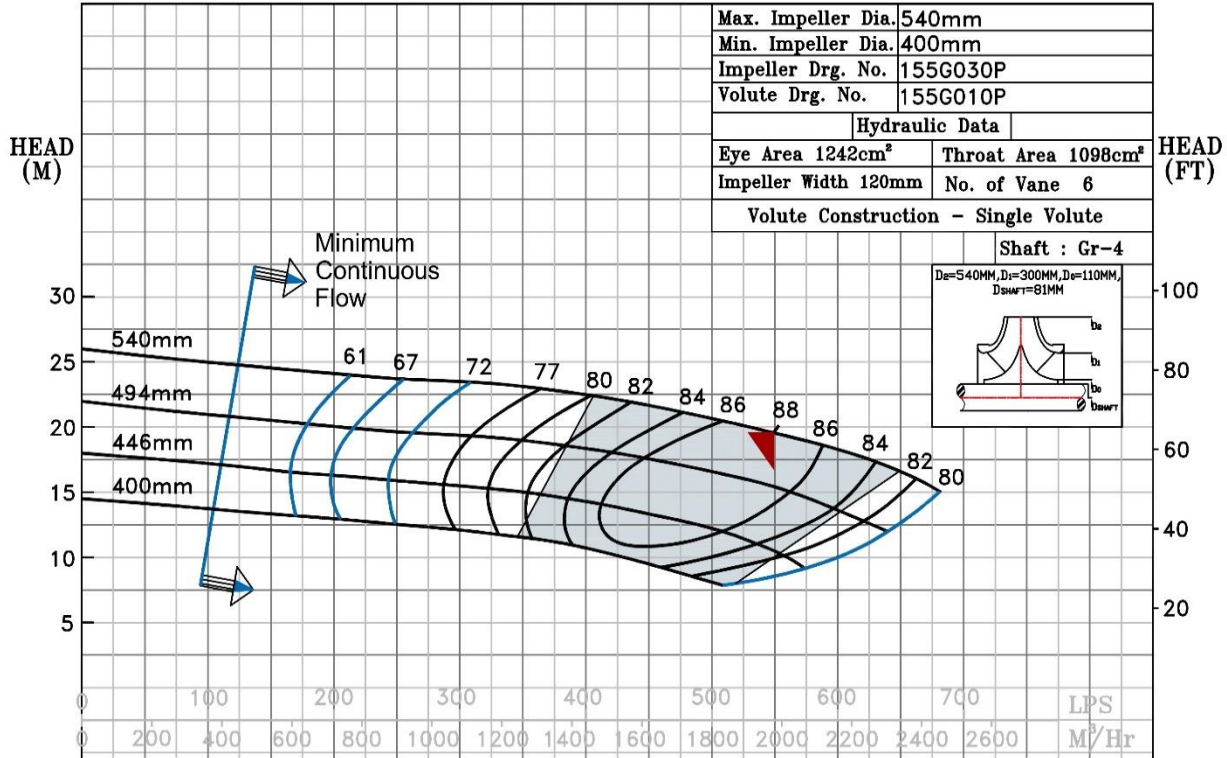


740 RPM

NOTE- PERFORMANCE AS PER ISO 9906 GRADE-2B

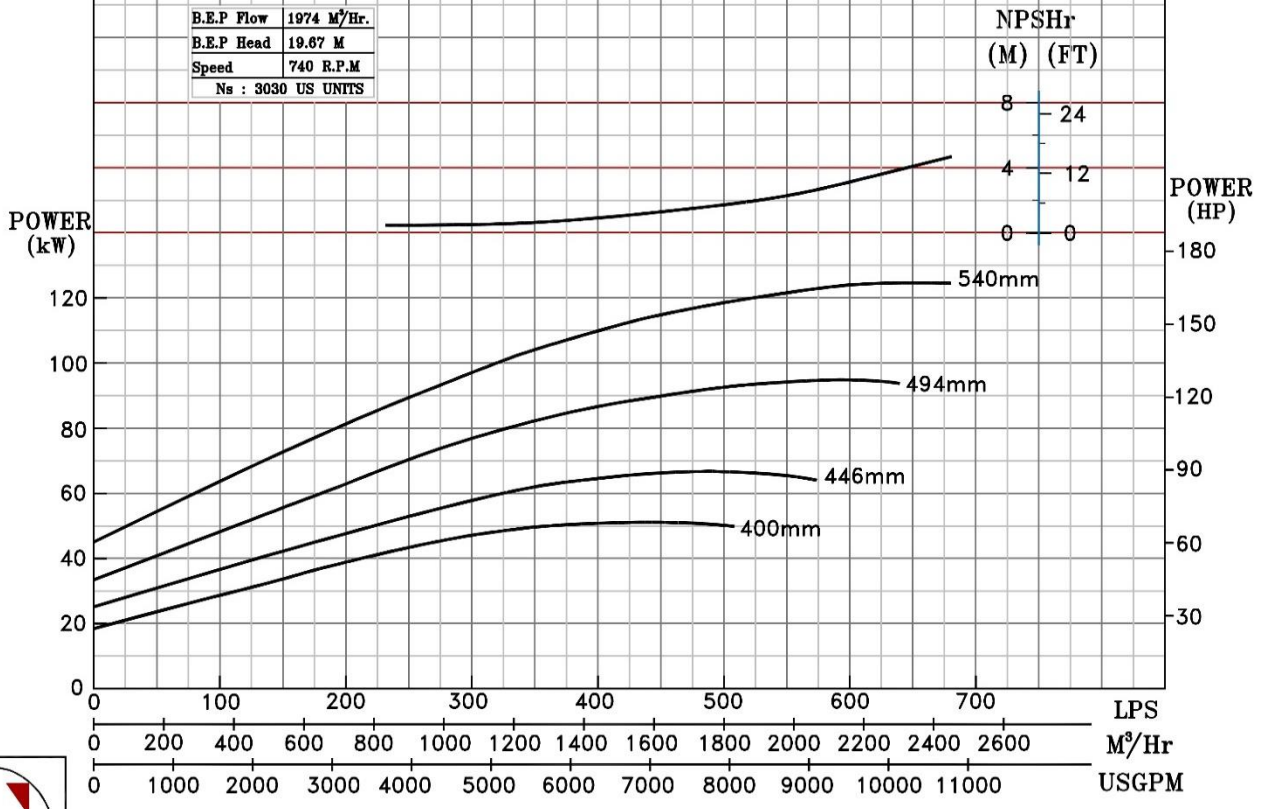
<b>PERFORMANCE CURVE OF 16HS21H @740 R.P.M</b>		16HS21H/X/105558	
 <b>PUMPSENSE</b> <i>HS RANGE</i>	<b>MODEL</b> 16HS21H	WORKING PRESS.	10 bar
	SIZE 500x400-540	TEST PRESS.	15 bar
	TYPE-AXIALLY SPLIT CASE SINGLE STAGE		
	SPEED 740 rpm		

SHADED REGION ON THE H-Q CURVE REPRESENTS OPTIMUM SELECTION ZONE  
 PUMP PERFORMANCE CHARACTERISTICS COMPUTED BASED ON CLEAN COLD WATER S.G 1.0




B.E.P Flow	1974 M <sup>3</sup> /Hr.
B.E.P Head	19.87 M
Speed	740 R.P.M
Ns : 3030 US UNITS	

NPSHr	
(M)	(FT)
8	24
4	12
0	0

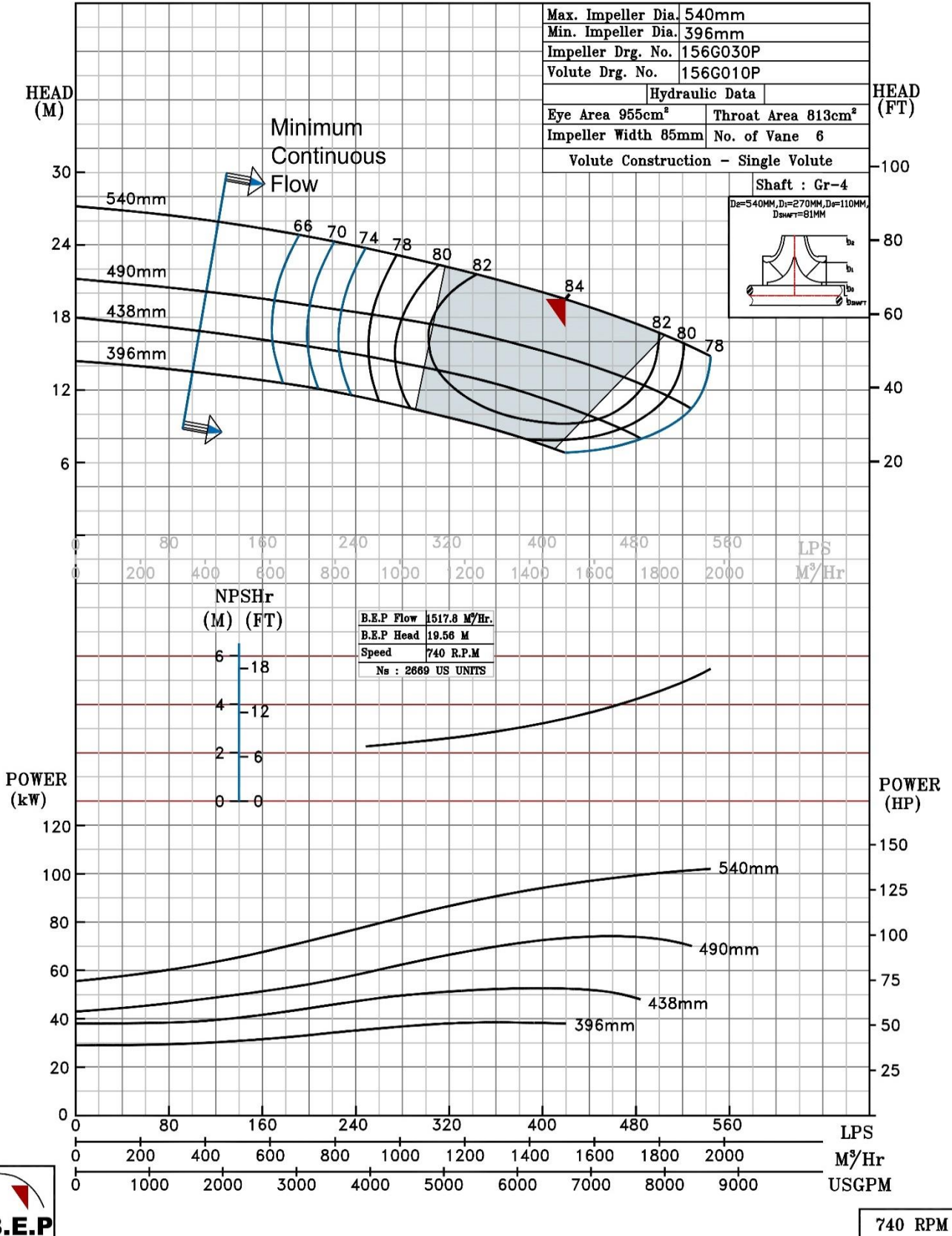


740 RPM


NOTE- PERFORMANCE AS PER ISO 9906 GRADE-2B

PERFORMANCE CURVE OF 16HS21L @740 R.P.M		16HS21L/X/105658	
 <b>PUMPSENSE</b> <i>HS RANGE</i>	<b>MODEL</b> 16HS21L	WORKING PRESS	10 bar
	SIZE 500x400-540	TEST PRESS.	15 bar
	TYPE-AXIALLY SPLIT CASE SINGLE STAGE		
	SPEED 740 rpm		

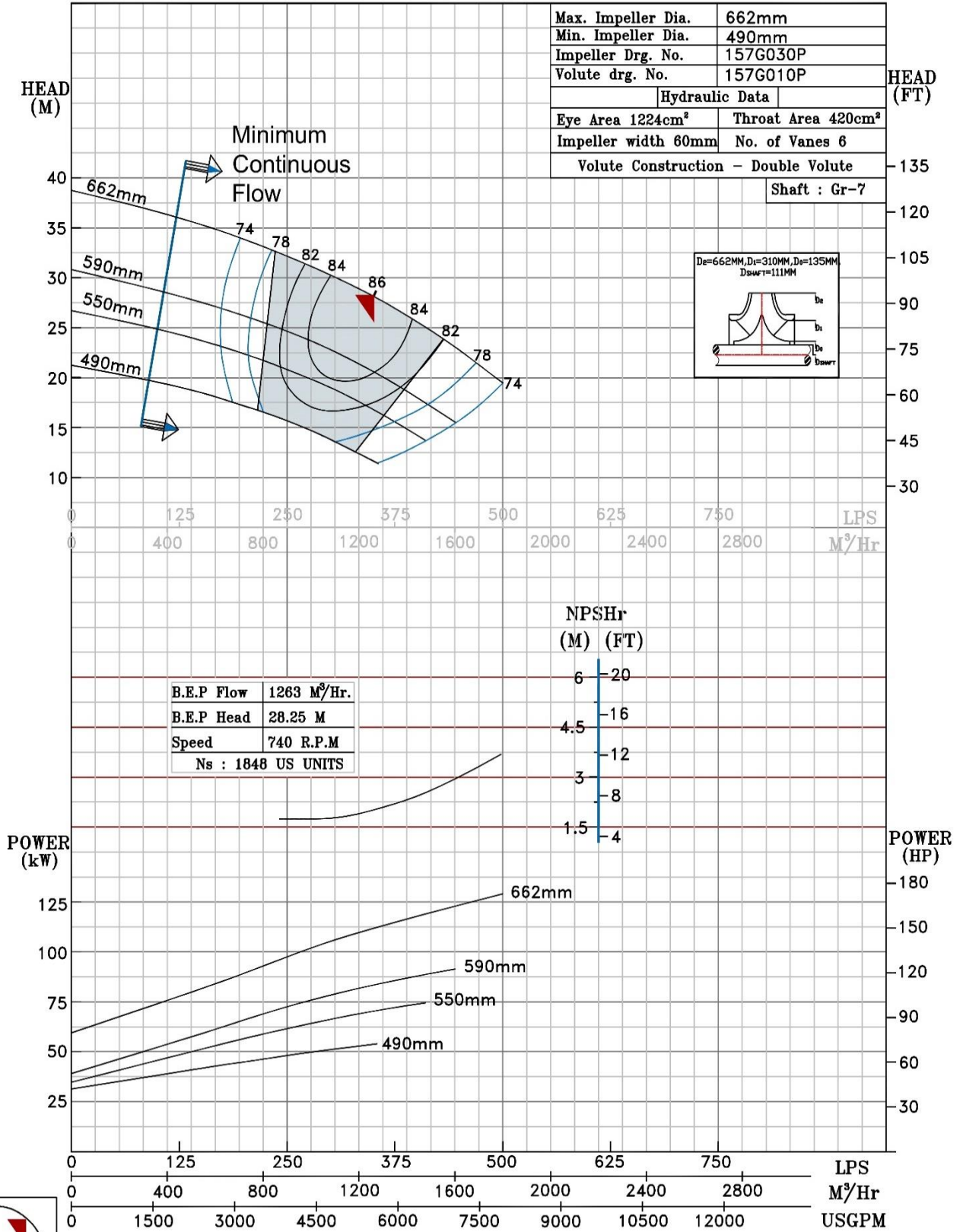
SHADED REGION ON THE H-Q CURVE REPRESENTS OPTIMUM SELECTION ZONE  
 PUMP PERFORMANCE CHARACTERISTICS COMPUTED BASED ON CLEAN COLD WATER S.G 1.0



NOTE- PERFORMANCE AS PER ISO 9908 GRADE-2B

<b>PERFORMANCE CURVE OF 16HS26 @740 R.P.M</b>		16HS26/Y/105758	
 <b>PUMPSENSE</b> <i>HS RANGE</i>	<b>MODEL</b> 16HS26	WORKING PRESS.	10 bar
	SIZE 500x400-662	TEST PRESS.	15 bar
	TYPE-AXIALLY SPLIT CASE SINGLE STAGE		
	SPEED 740 rpm		

SHADED REGION ON THE H-Q CURVE REPRESENTS OPTIMUM SELECTION ZONE  
 PUMP PERFORMANCE CHARACTERISTICS COMPUTED BASED ON CLEAN COLD WATER S.G 1.0



740 RPM

NOTE- PERFORMANCE AS PER ISO 9906 GRADE-2B

PERFORMANCE CURVE OF 16HS28 @740 R.P.M

16HS28/X/105858



PUMPSENSE

HS RANGE

MODEL 16HS28

WORKING PRESS. 10 bar

SIZE 450x400-700

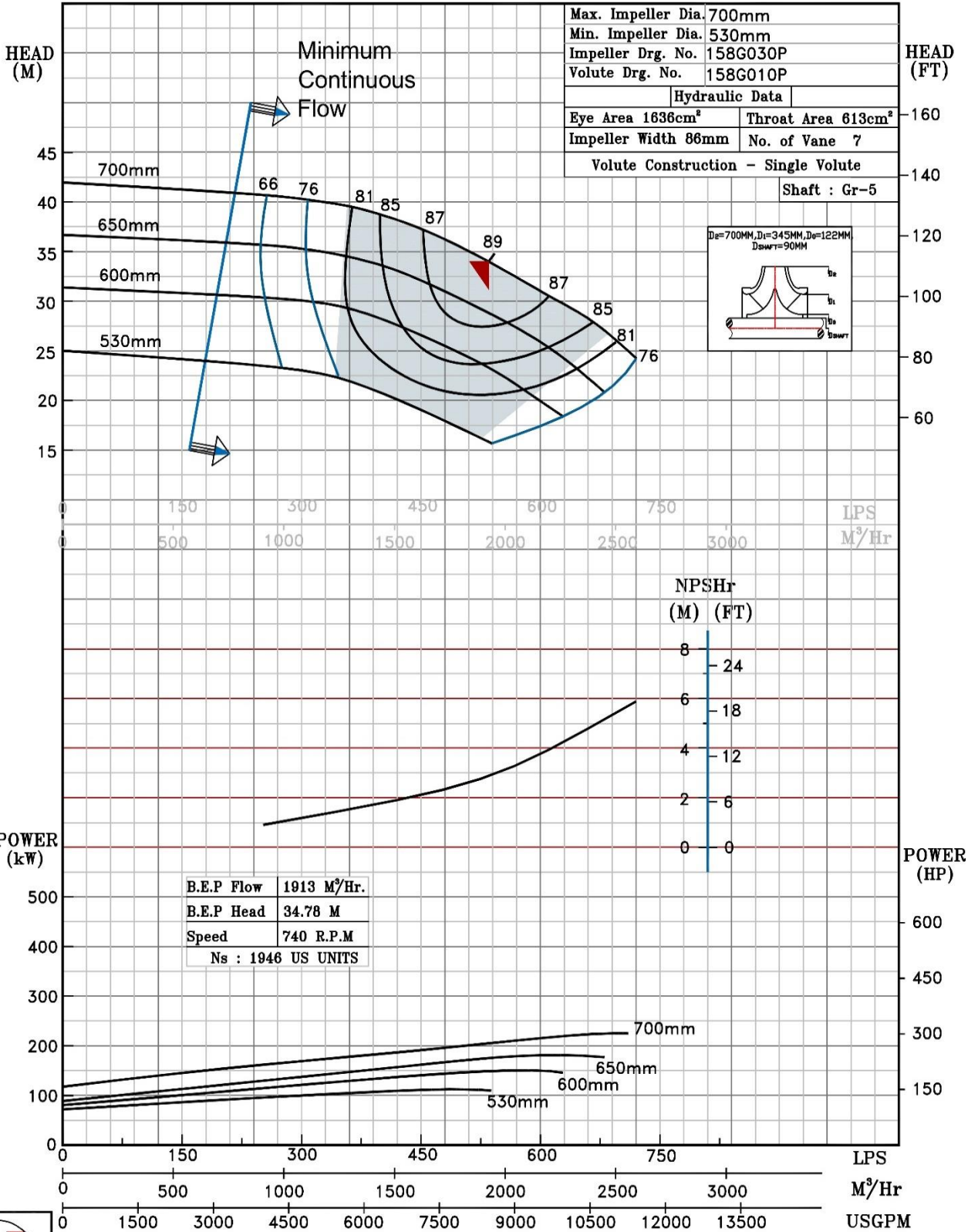
TEST PRESS. 15 bar

TYPE-AXIALLY SPLIT CASE SINGLE STAGE

SPEED 740 rpm


SHADED REGION ON THE H-Q CURVE REPRESENTS OPTIMUM SELECTION ZONE

PUMP PERFORMANCE CHARACTERISTICS COMPUTED BASED ON CLEAN COLD WATER S.G 1.0

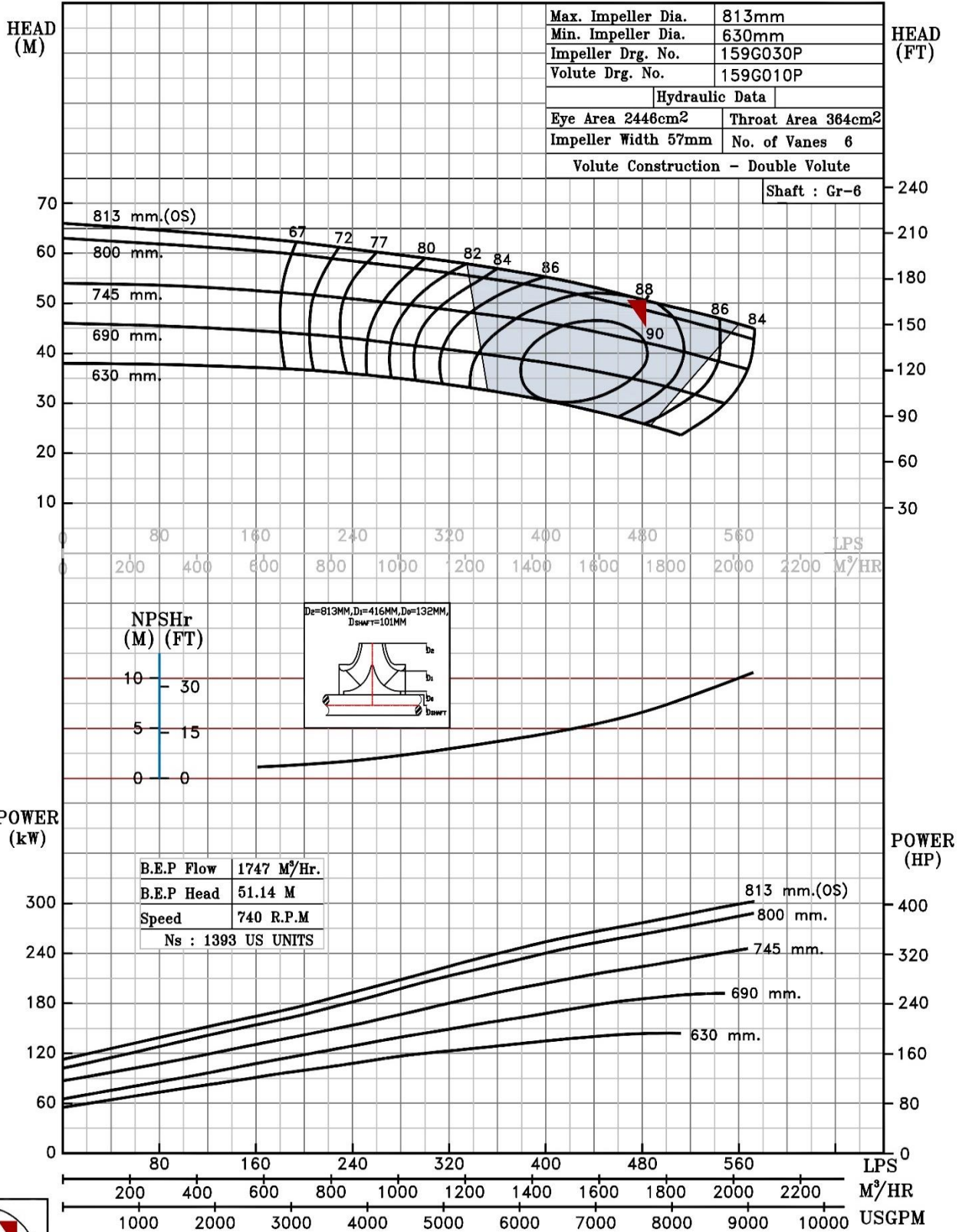


740 RPM

NOTE- PERFORMANCE AS PER ISO 9906 GRADE-2B


PERFORMANCE CURVE OF 16HS32 @740 R.P.M		16HS32/X/105958	
 <b>PUMPSense</b> <i>HS RANGE</i>	<b>MODEL</b> 16HS32	WORKING PRESS.	10 bar
	SIZE 500x400-813	TEST PRESS.	15 bar
	TYPE-AXIALLY SPLIT CASE SINGLE STAGE		SPEED 740 rpm

SHADED REGION ON THE H-Q CURVE REPRESENTS OPTIMUM SELECTION ZONE  
 PUMP PERFORMANCE CHARACTERISTICS COMPUTED BASED ON CLEAN COLD WATER S.G 1.0

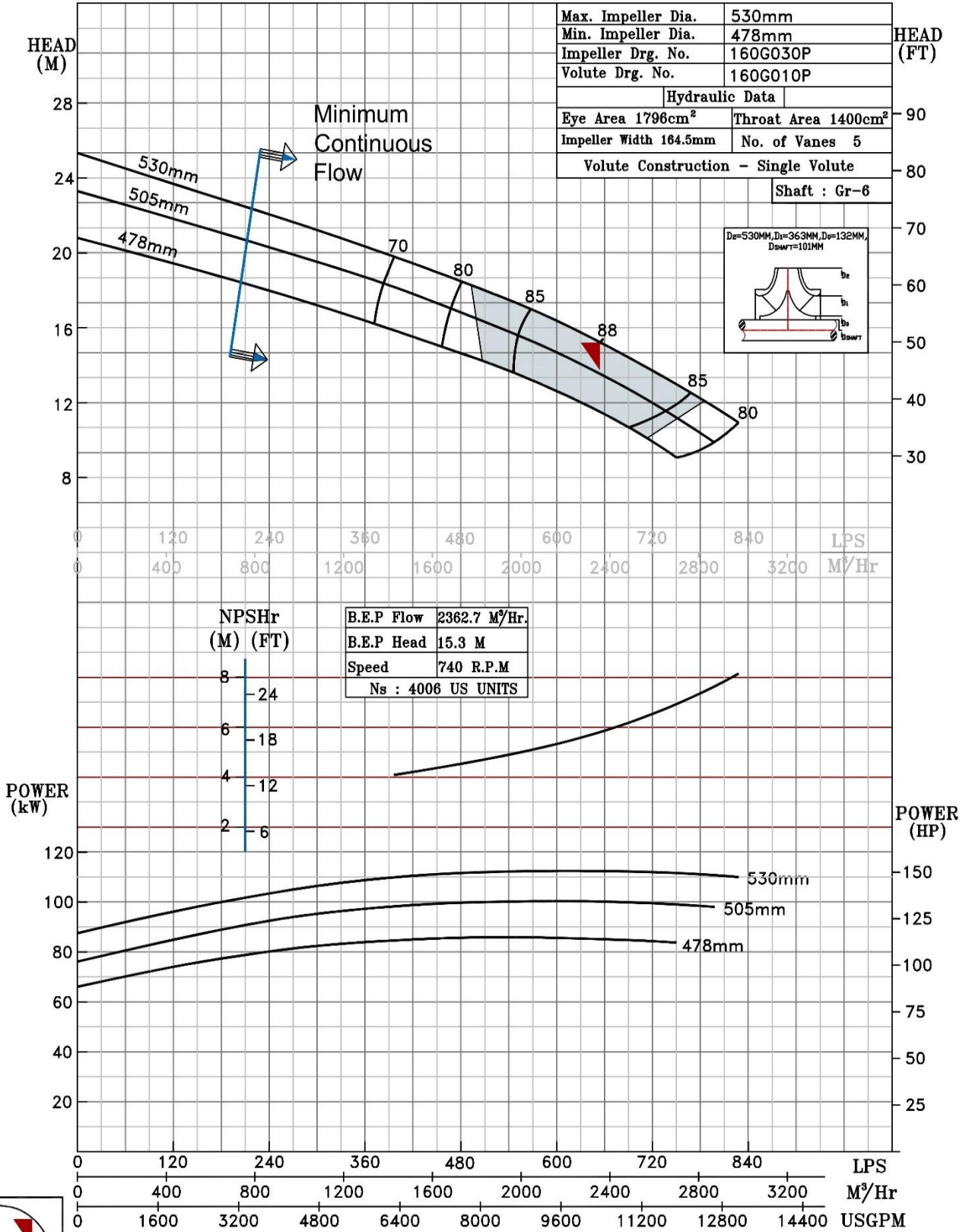


740 RPM

NOTE- PERFORMANCE AS PER ISO 9906 GRADE-2B

PERFORMANCE CURVE OF 18HS21 @740 R.P.M		18HS21/X/106058	
 <b>PUMPSENSE</b> <i>HS RANGE</i>	<b>MODEL</b> 18HS21	WORKING PRESS.	10 bar
	SIZE 500x450-530	TEST PRESS.	15 bar
	TYPE-AXIALLY SPLIT CASE SINGLE STAGE		SPEED 740 rpm

SHADED REGION ON THE H-Q CURVE REPRESENTS OPTIMUM SELECTION ZONE  
 PUMP PERFORMANCE CHARACTERISTICS COMPUTED BASED ON CLEAN COLD WATER S.G 1.0



740 RPM



NOTE- PERFORMANCE AS PER ISO 9906 GRADE-2B

PERFORMANCE CURVE OF 18HS25 @740 R.P.M

18HS25/X/106158



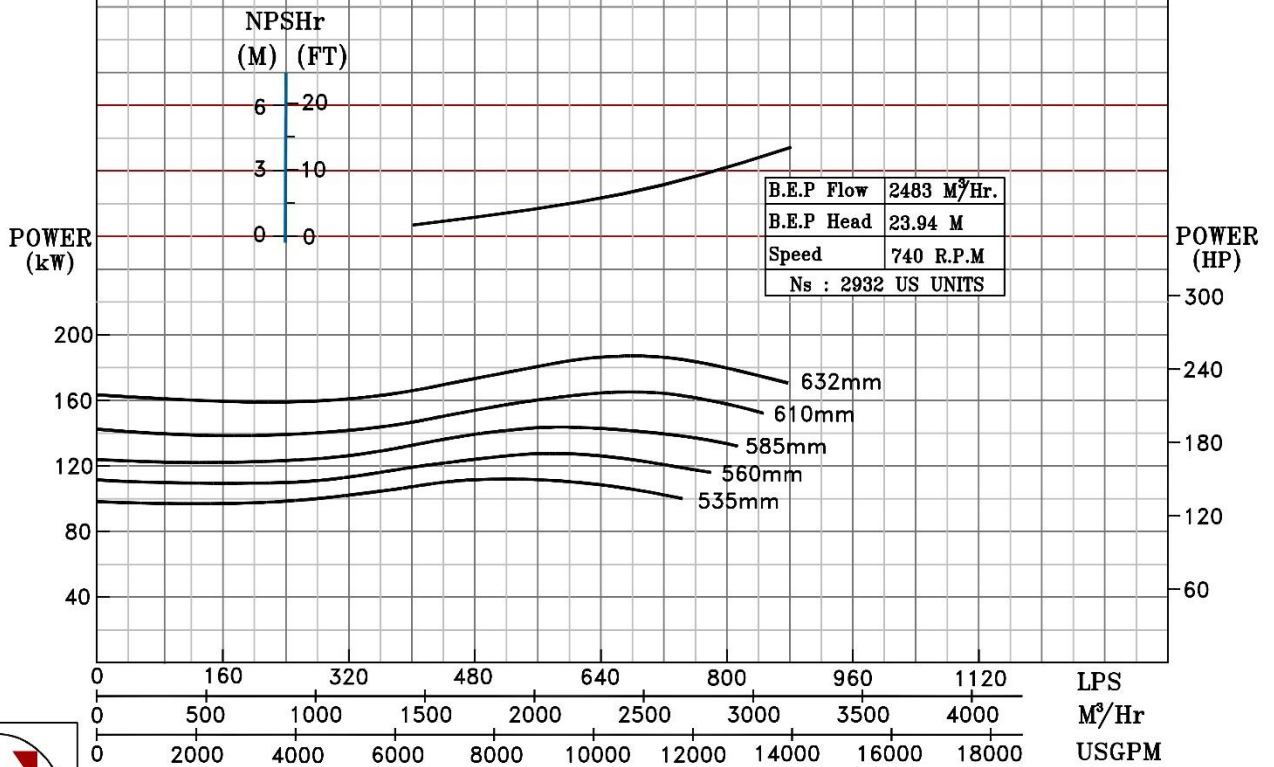
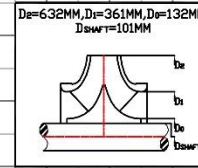
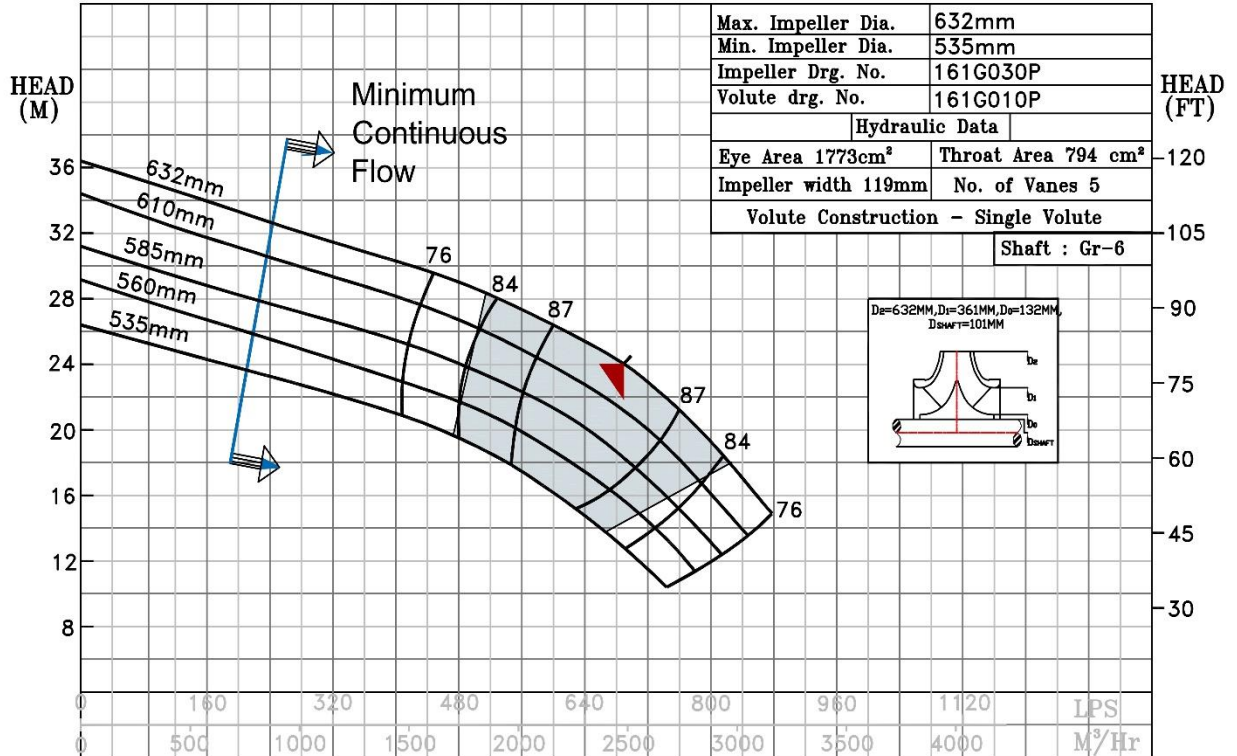
PUMPSENSE

HS RANGE

MODEL	18HS25	WORKING PRESS.	10 bar
SIZE	500x450-632	TEST PRESS.	15 bar
TYPE-AXIALLY SPLIT CASE SINGLE STAGE		SPEED 740 rpm	


SHADED REGION ON THE H-Q CURVE REPRESENTS OPTIMUM SELECTION ZONE

PUMP PERFORMANCE CHARACTERISTICS COMPUTED BASED ON CLEAN COLD WATER S.G 1.0



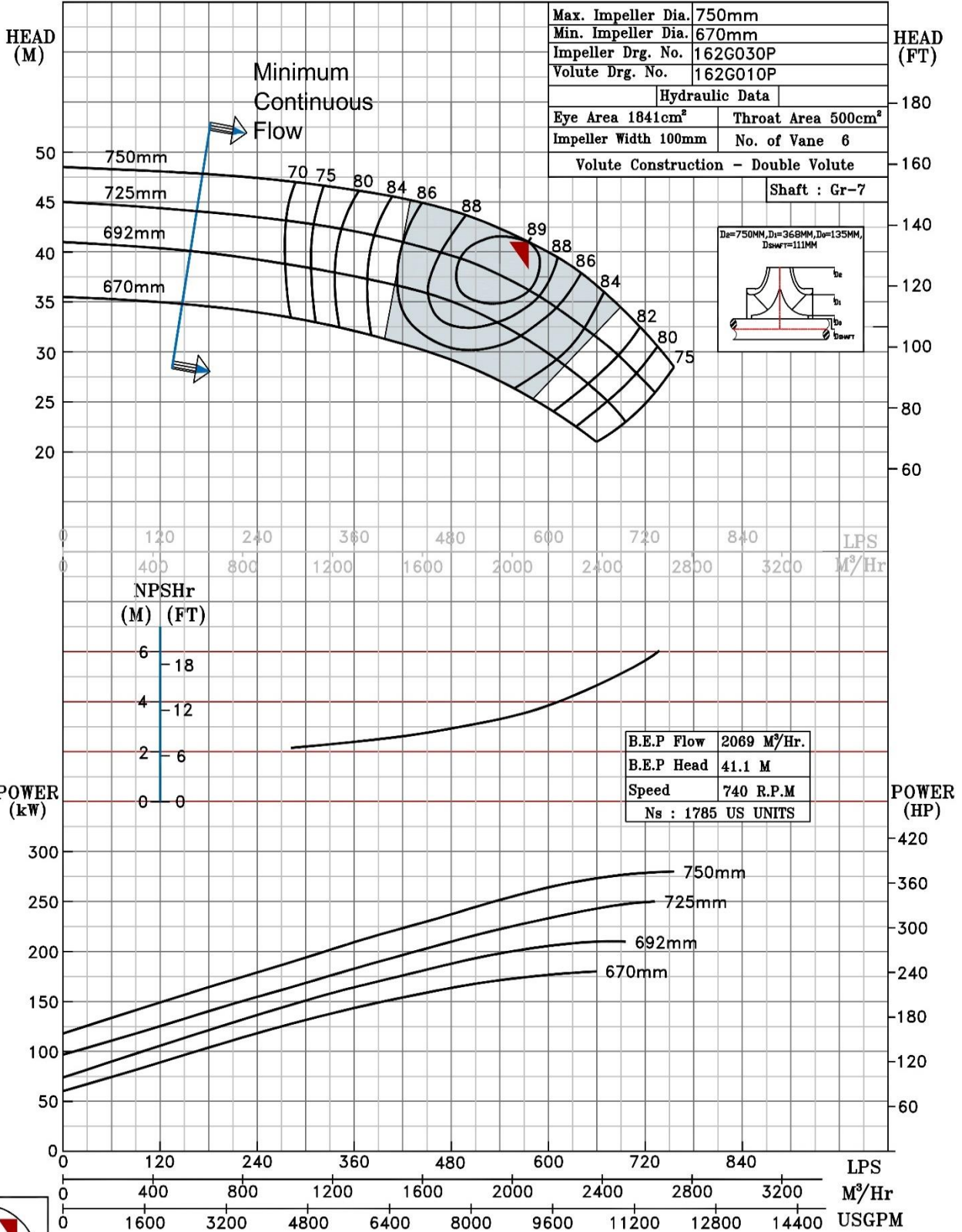
740 RPM

NOTE- PERFORMANCE AS PER ISO 9906 GRADE-2B

PERFORMANCE CURVE OF 18HS30 @740 R.P.M		18HS30/X/106258	
 <p><b>PUMPSENSE</b> HS RANGE</p>	<b>MODEL</b> 18HS30	WORKING PRESS	10 bar
	SIZE 500x450-750	TEST PRESS.	15 bar
	TYPE-AXIALLY SPLIT CASE SINGLE STAGE		
	SPEED 740 rpm		


SHADED REGION ON THE H-Q CURVE REPRESENTS OPTIMUM SELECTION ZONE

PUMP PERFORMANCE CHARACTERISTICS COMPUTED BASED ON CLEAN COLD WATER S.G 1.0

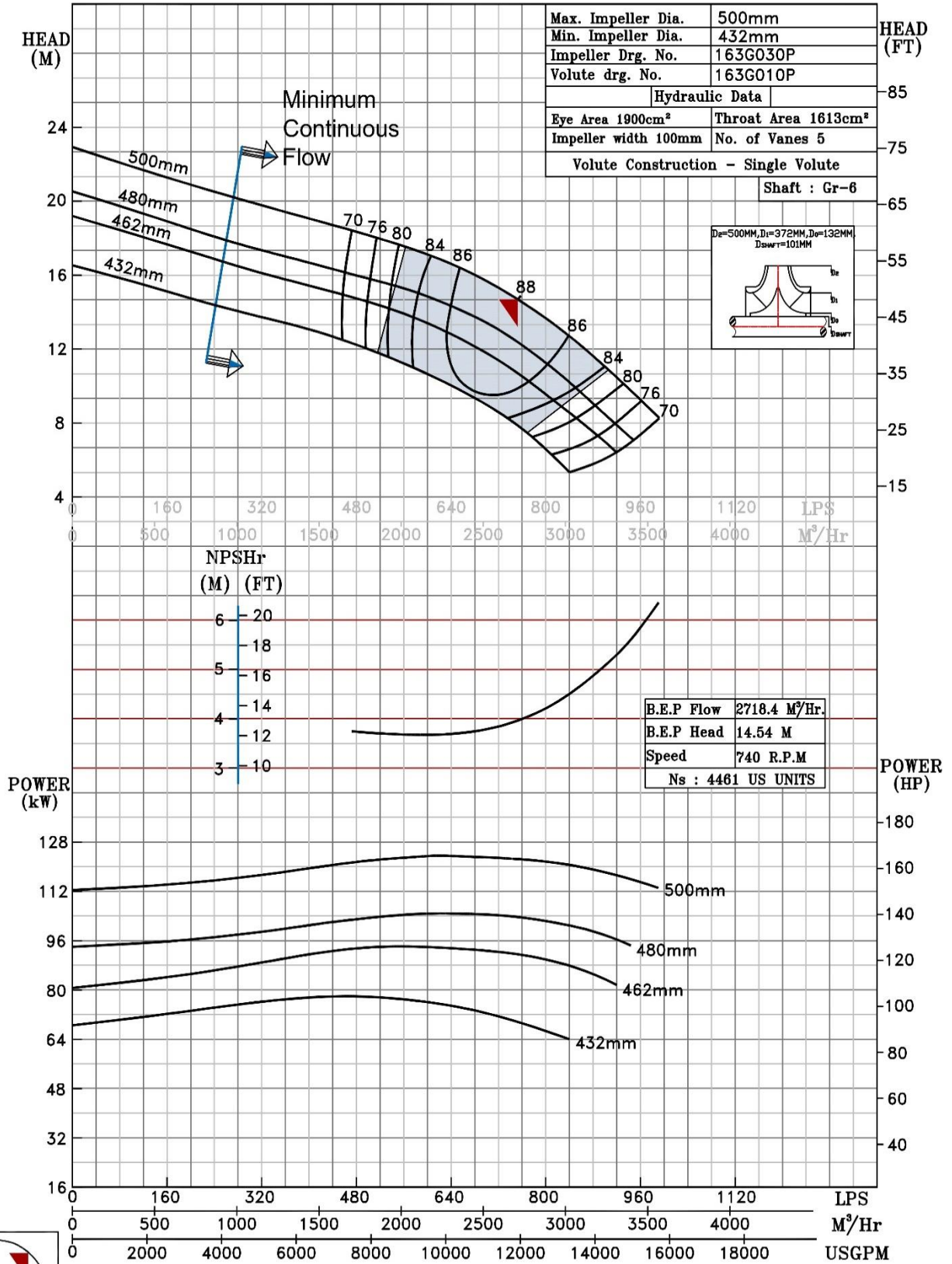


740 RPM

NOTE- PERFORMANCE AS PER ISO 9906 GRADE-2B


PERFORMANCE CURVE OF 20HS19 @740 R.P.M		20HS19/X/106368
 <b>PUMPSENSE</b> <i>HS RANGE</i>	MODEL 20HS19	WORKING PRESS. 10 bar
	SIZE 600x500-480	TEST PRESS. 15 bar
	TYPE-AXIALLY SPLIT CASE SINGLE STAGE	
		SPEED 740 rpm

SHADED REGION ON THE H-Q CURVE REPRESENTS OPTIMUM SELECTION ZONE  
 PUMP PERFORMANCE CHARACTERISTICS COMPUTED BASED ON CLEAN COLD WATER S.G. 1.0

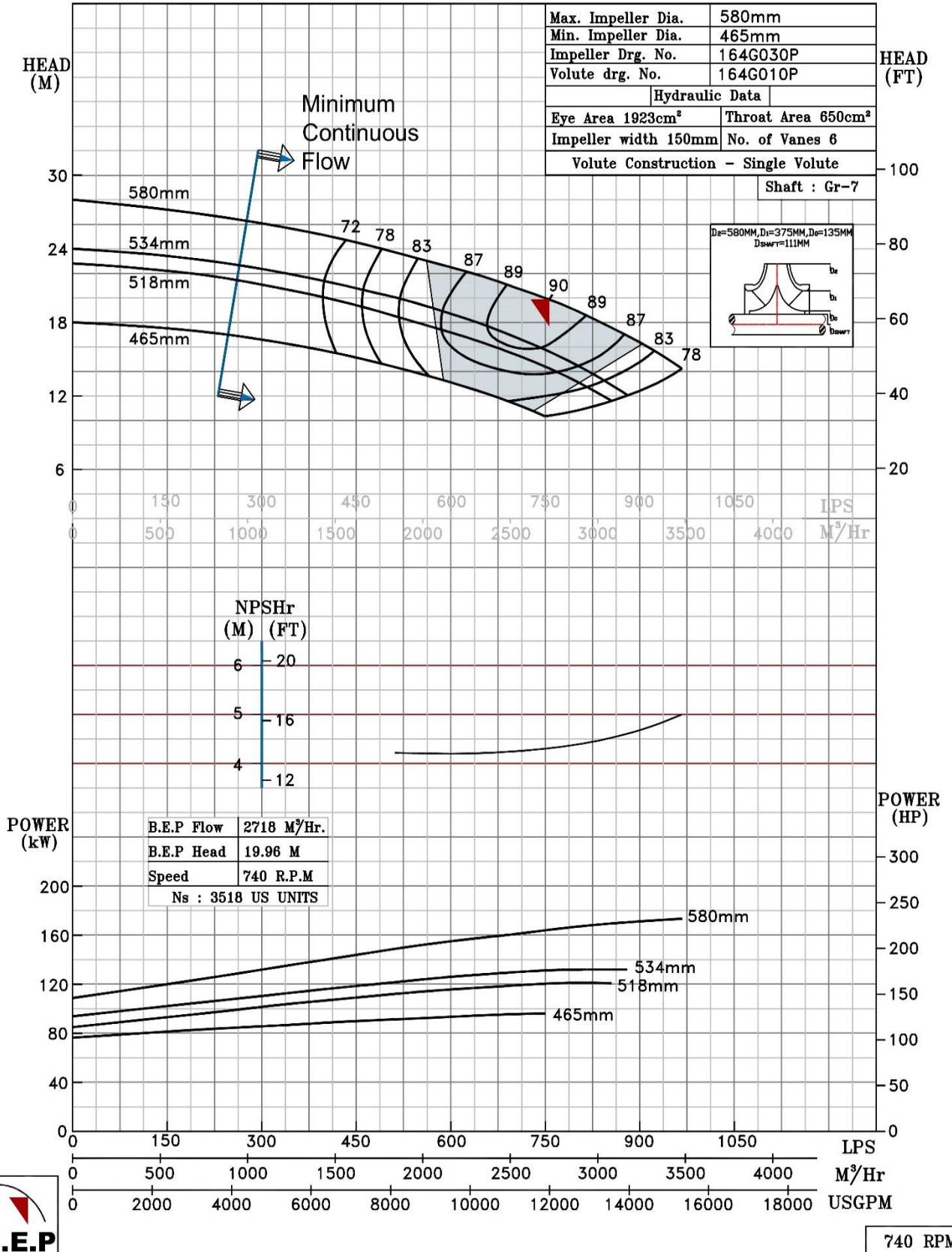


740 RPM

NOTE- PERFORMANCE AS PER ISO 9906 GRADE-2B

<b>PERFORMANCE CURVE OF 20HS23 @740 R.P.M</b>		20HS23/X/106458	
 <b>PUMPSENSE</b> <i>HS RANGE</i>	<b>MODEL</b> 20HS23	WORKING PRESS.	10 bar
	SIZE 600x500-580	TEST PRESS.	15 bar
	TYPE-AXIALLY SPLIT CASE SINGLE STAGE		SPEED 740 rpm

SHADED REGION ON THE H-Q CURVE REPRESENTS OPTIMUM SELECTION ZONE  
 PUMP PERFORMANCE CHARACTERISTICS COMPUTED BASED ON CLEAN COLD WATER S.G 1.0



NOTE- PERFORMANCE AS PER ISO 9906 GRADE-2B

PERFORMANCE CURVE OF 20HS25 @ 740 R.P.M

20HS25/X/106558



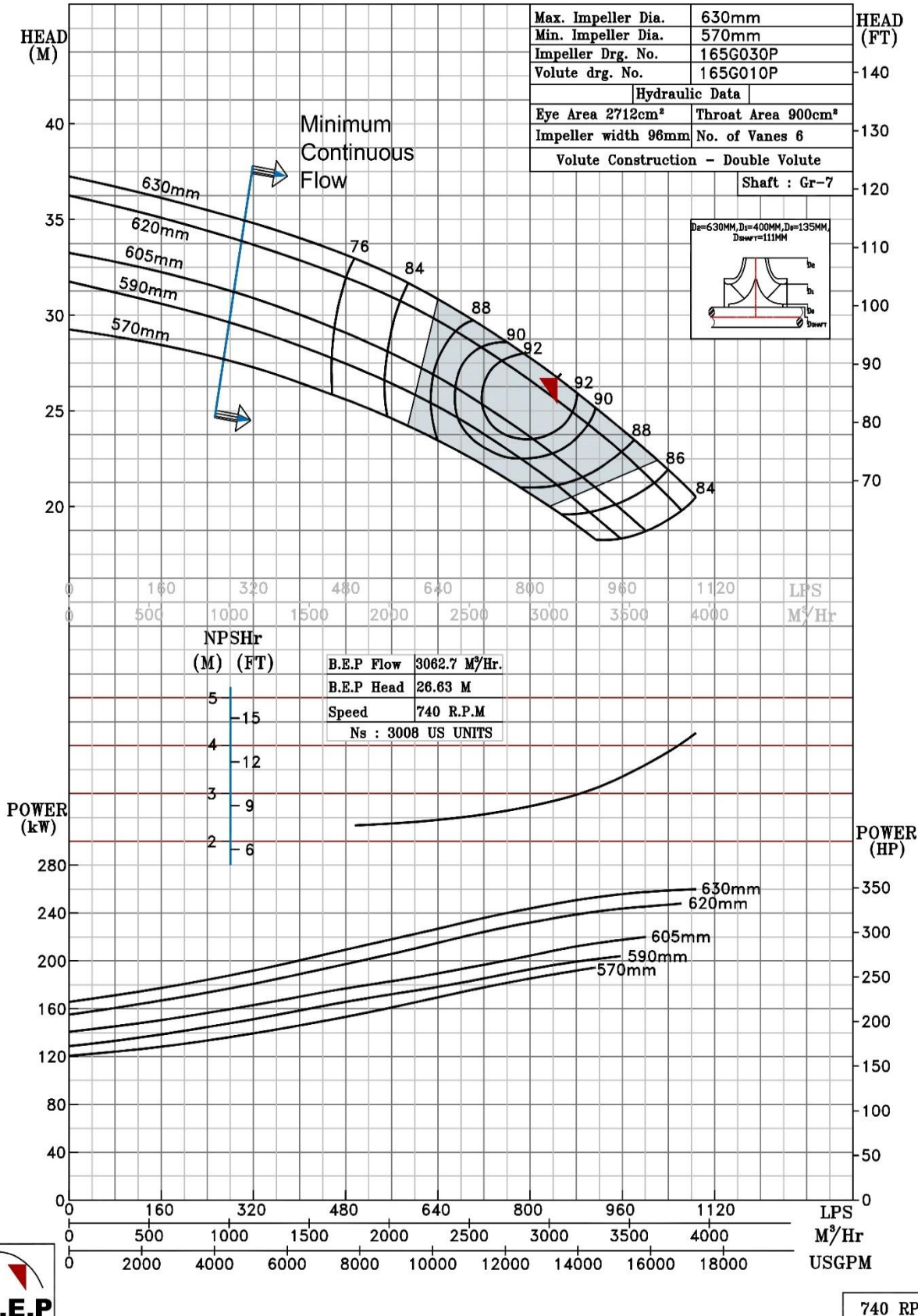
PUMPSENSE

HS RANGE

MODEL 20HS25	WORKING PRESS. 10 bar
SIZE 600x500-630	TEST PRESS. 15 bar
TYPE-AXIALLY SPLIT CASE SINGLE STAGE	
SPEED 740 rpm	


SHADED REGION ON THE H-Q CURVE REPRESENTS OPTIMUM SELECTION ZONE

PUMP PERFORMANCE CHARACTERISTICS COMPUTED BASED ON CLEAN COLD WATER S.G 1.0

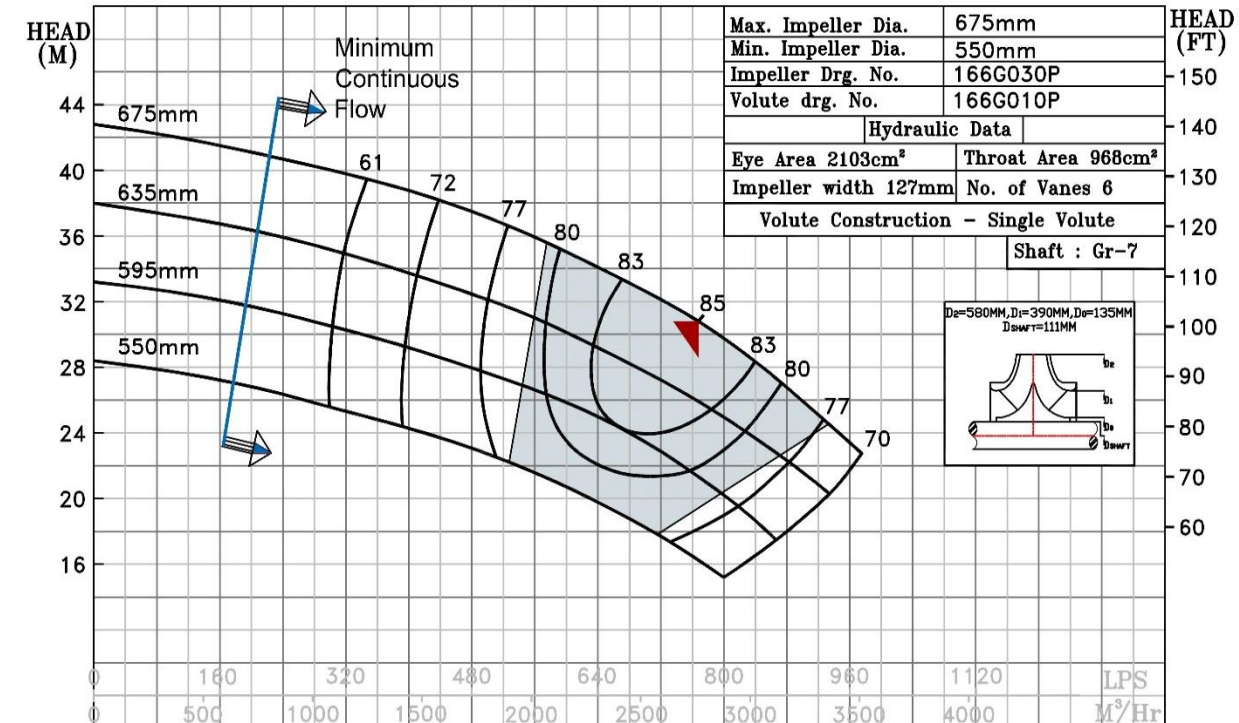


740 RPM

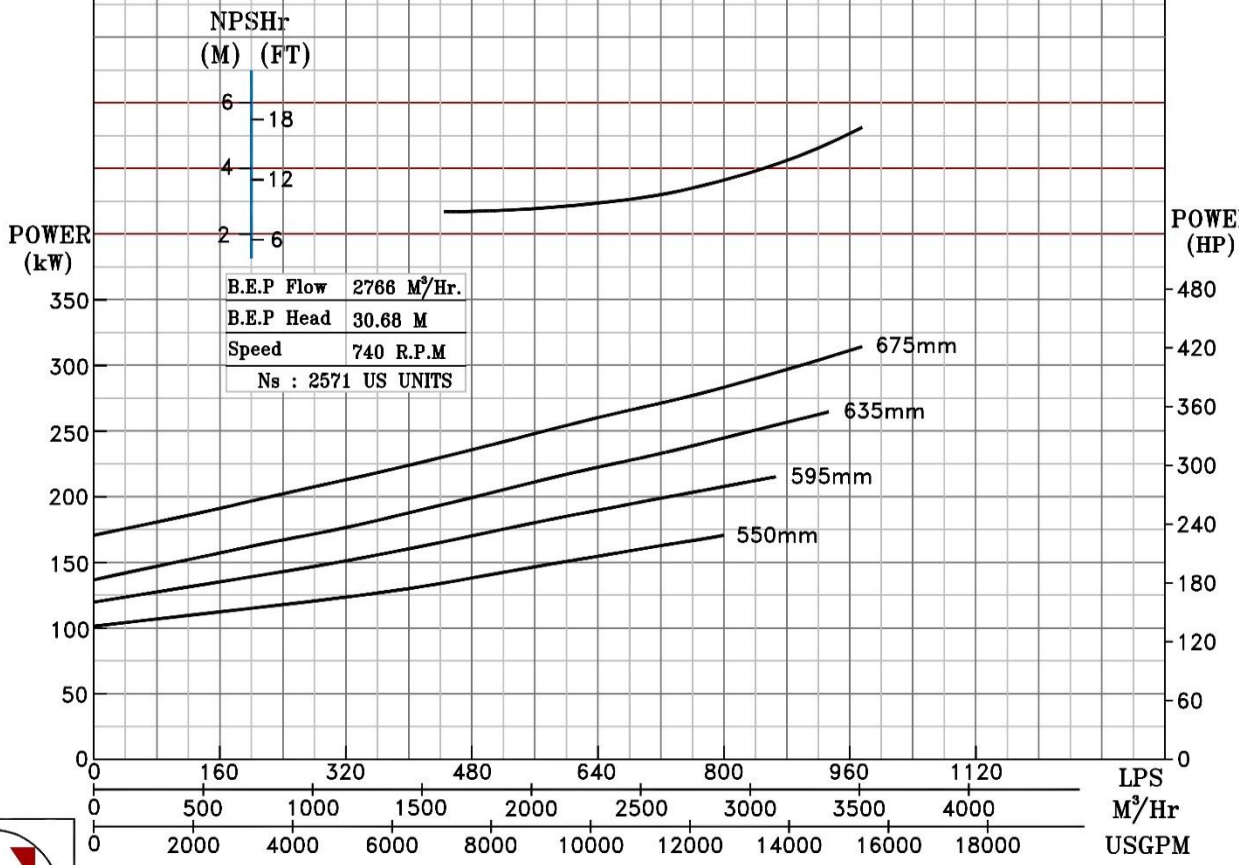
NOTE- PERFORMANCE AS PER ISO 9906 GRADE-2B

PERFORMANCE CURVE OF 20HS27 @740 R.P.M		20HS27/X/106658	
 <b>PUMPSENSE</b> <i>HS RANGE</i>	<b>MODEL</b> 20HS27	WORKING PRESS. 12 bar	
	SIZE 600x500-675	TEST PRESS. 18 bar	
	TYPE-AXIALLY SPLIT CASE SINGLE STAGE		SPEED 740 rpm

SHADED REGION ON THE H-Q CURVE REPRESENTS OPTIMUM SELECTION ZONE  
 PUMP PERFORMANCE CHARACTERISTICS COMPUTED BASED ON CLEAN COLD WATER S.G 1.0




Max. Impeller Dia.	675mm
Min. Impeller Dia.	550mm
Impeller Drg. No.	166G030P
Volute drg. No.	166G010P
Hydraulic Data	
Eye Area 2103cm <sup>2</sup>	Throat Area 968cm <sup>2</sup>
Impeller width 127mm	No. of Vanes 6
Volute Construction - Single Volute	
Shaft : Gr-7	



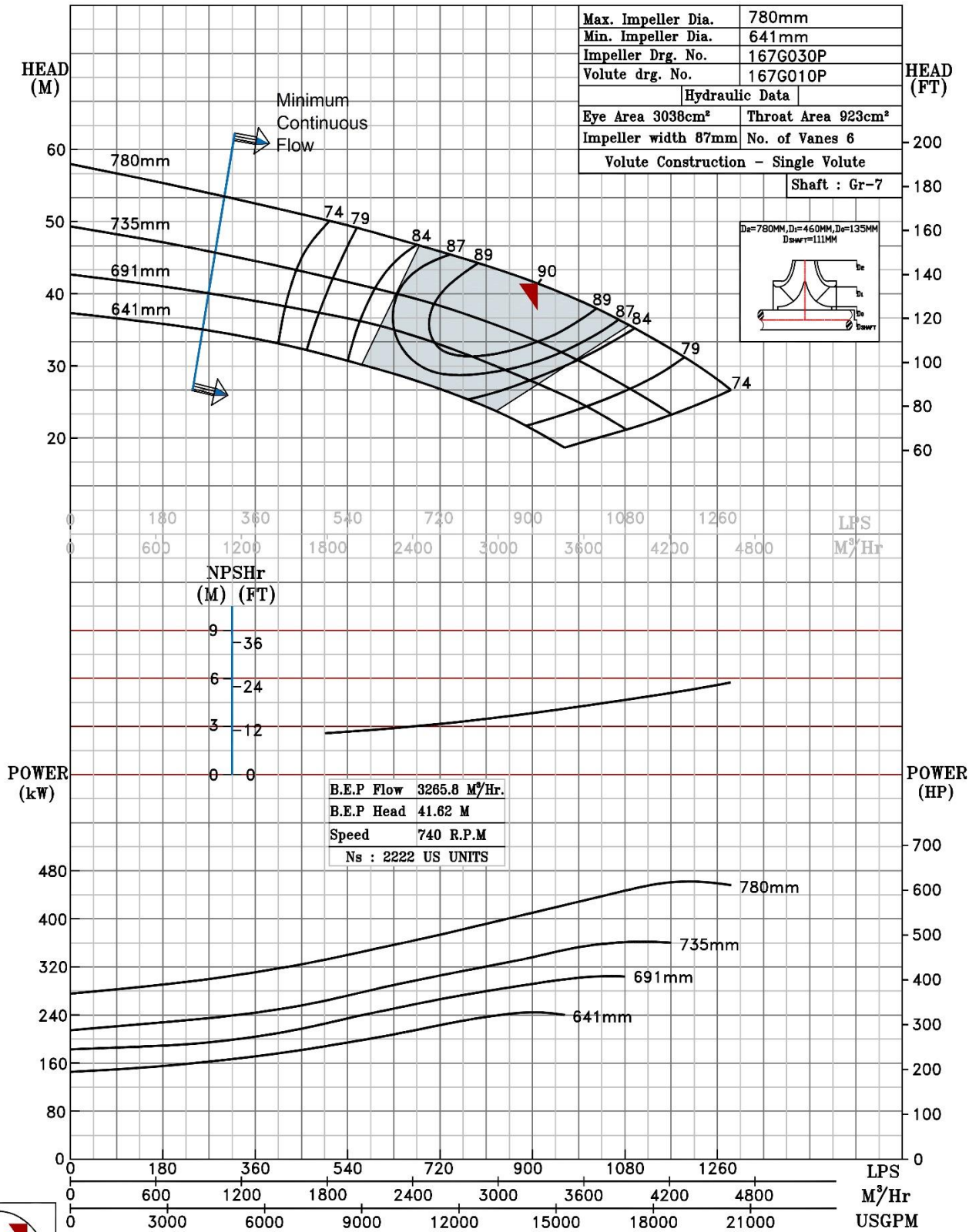
740 RPM

NOTE- PERFORMANCE AS PER ISO 9906 GRADE-2B

PERFORMANCE CURVE OF 20HS31 @740 R.P.M		20HS31/X/106758	
 <b>PUMPSENSE</b> <i>HS RANGE</i>	MODEL 20HS31	WORKING PRESS. 16 bar	
	SIZE 600x500-780	TEST PRESS. 24 bar	
	TYPE-AXIALLY SPLIT CASE SINGLE STAGE		SPEED 740 rpm

SHADED REGION ON THE H-Q CURVE REPRESENTS OPTIMUM SELECTION ZONE

PUMP PERFORMANCE CHARACTERISTICS COMPUTED BASED ON CLEAN COLD WATER S.G 1.0



740 RPM