
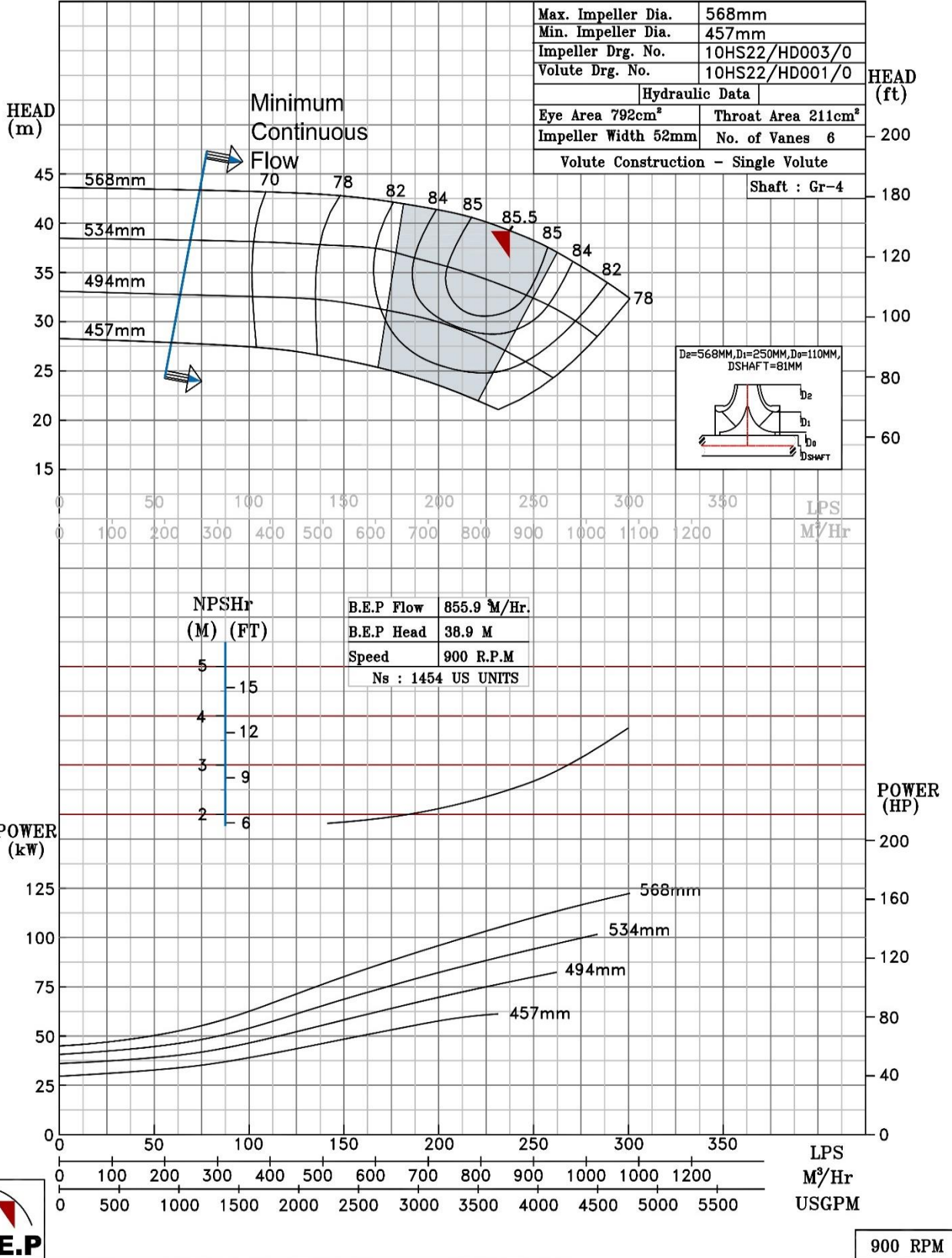



NOTE- PERFORMANCE AS PER ISO 9906 GRADE-2B

PERFORMANCE CURVE OF 10HS22 @900 R.P.M		10HS22/Y/103768	
 PUMPSENSE <i>HS RANGE</i>	MODEL 10HS22	WORKING PRESS	16 bar
	SIZE 300x250-568	TEST PRESS.	24 bar
	TYPE-AXIALLY SPLIT CASE SINGLE STAGE		
			SPEED 900 rpm

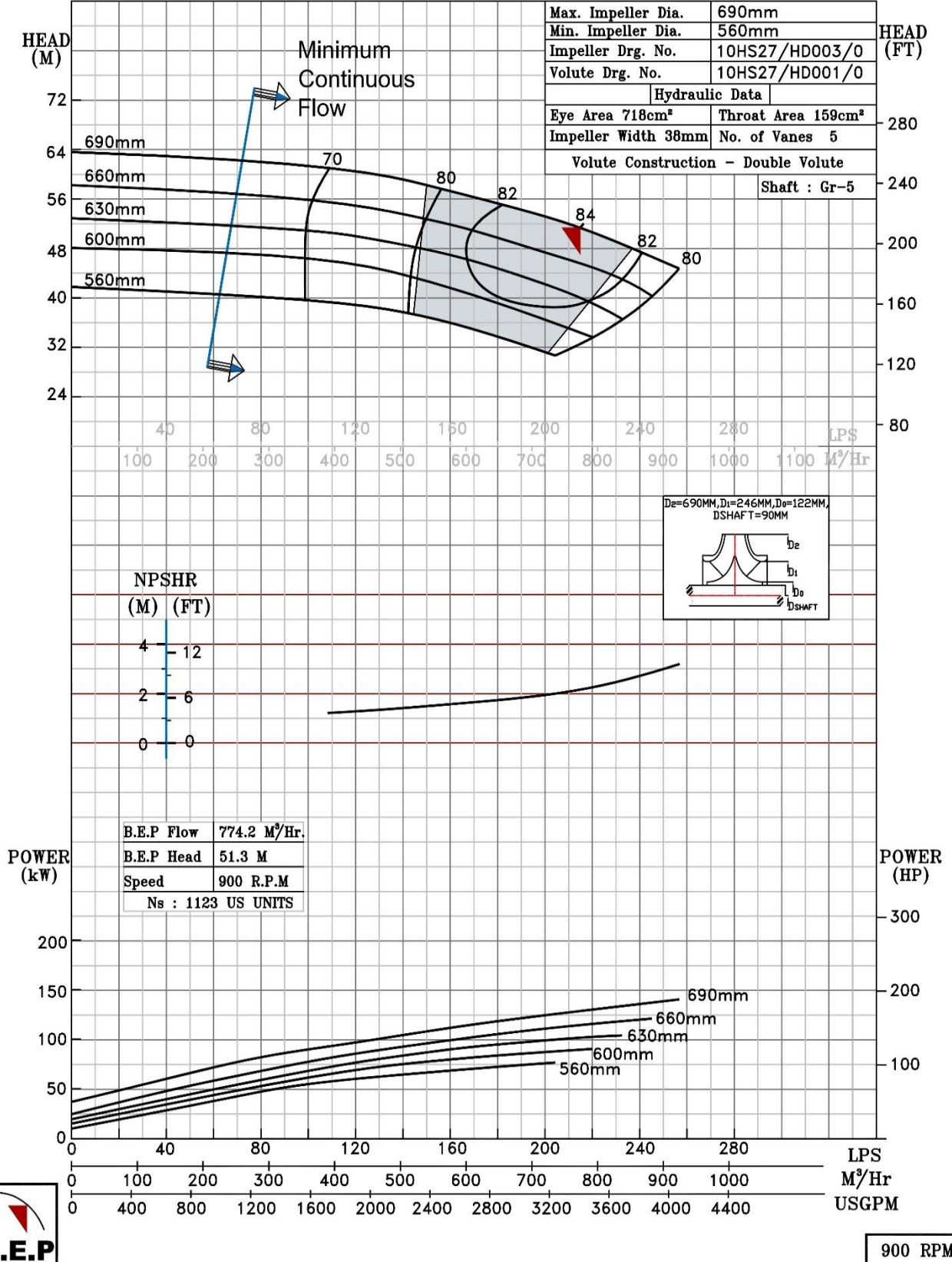
SHADED REGION ON THE H-Q CURVE REPRESENTS OPTIMUM SELECTION ZONE
 PUMP PERFORMANCE CHARACTERISTICS COMPUTED BASED ON CLEAN COLD WATER S.G 1.0




NOTE- PERFORMANCE AS PER ISO 9906 GRADE-2B

PERFORMANCE CURVE OF 10HS27 @900 R.P.M		10HS27/X/103868	
 PUMPSENSE <i>HS RANGE</i>	MODEL 10HS27	WORKING PRESS.	16 bar
	SIZE 300x250-690	TEST PRESS.	24 bar
	TYPE-AXIALLY SPLIT CASE SINGLE STAGE		
			SPEED 900 rpm

SHADED REGION ON THE H-Q CURVE REPRESENTS OPTIMUM SELECTION ZONE
 PUMP PERFORMANCE CHARACTERISTICS COMPUTED BASED ON CLEAN COLD WATER S.G 1.0

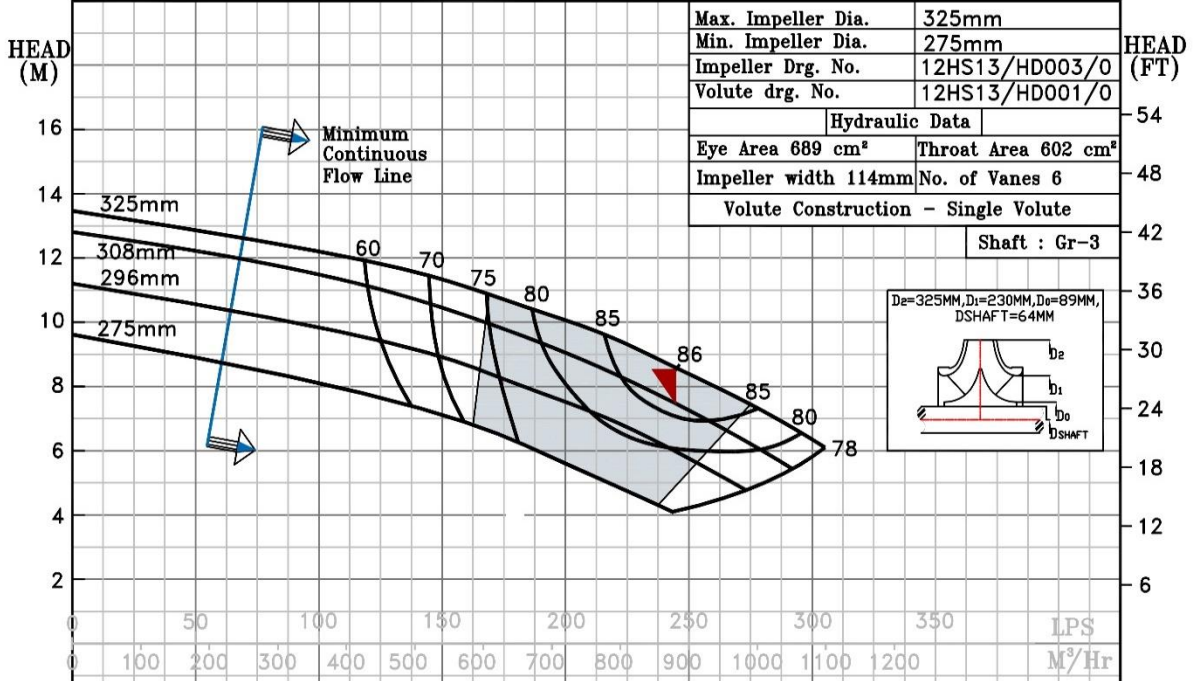


NOTE- PERFORMANCE AS PER ISO 9906 GRADE-2B

PERFORMANCE CURVE OF 12HS13 @900 R.P.M		12HS13/X/103968	
 PUMPSENSE <i>HS RANGE</i>	MODEL 12HS13	WORKING PRESS. 16 bar	
	SIZE 350x300-325	TEST PRESS. 24 bar	
	TYPE-AXIALLY SPLIT CASE SINGLE STAGE		
		SPEED 900 rpm	

SHADED REGION ON THE H-Q CURVE REPRESENTS OPTIMUM SELECTION ZONE

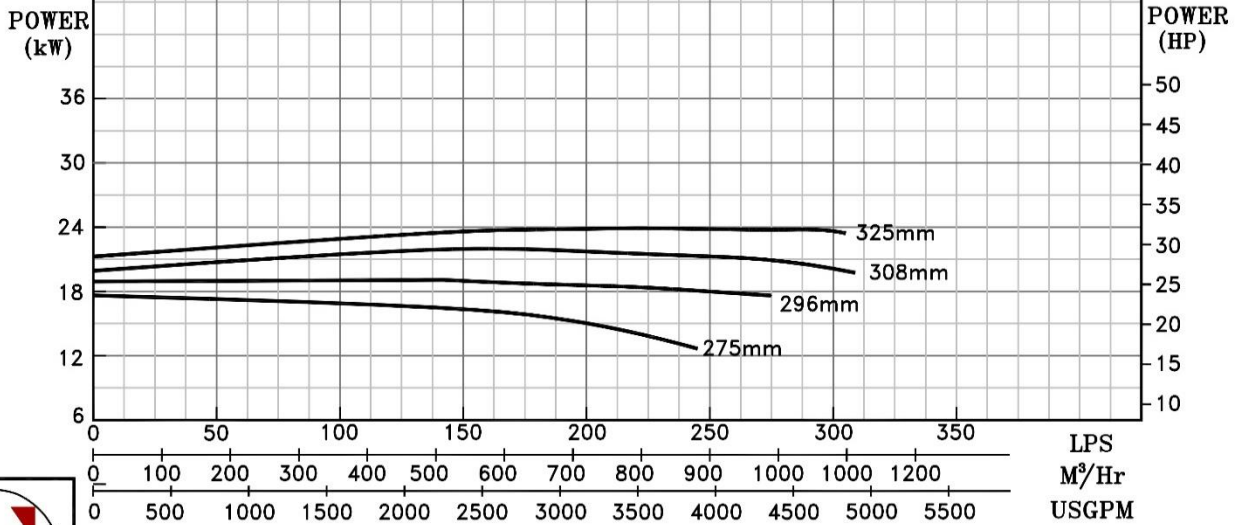
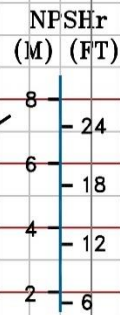
PERFORMANCE CHARACTERISTICS BASED UPON CLEAN COLD WATER - ADD 0.5m TO NPSHR FOR SAFETY



Max. Impeller Dia.	325mm
Min. Impeller Dia.	275mm
Impeller Drg. No.	12HS13/HD003/0
Volute drg. No.	12HS13/HD001/0
Hydraulic Data	
Eye Area 689 cm²	Throat Area 602 cm²
Impeller width 114mm	No. of Vanes 6
Volute Construction - Single Volute	


Shaft : Gr-3

B.E.P Flow	881 M³/Hr.
B.E.P Head	8.54M
Speed	900 R.P.M
Ns	4603 US UNITS

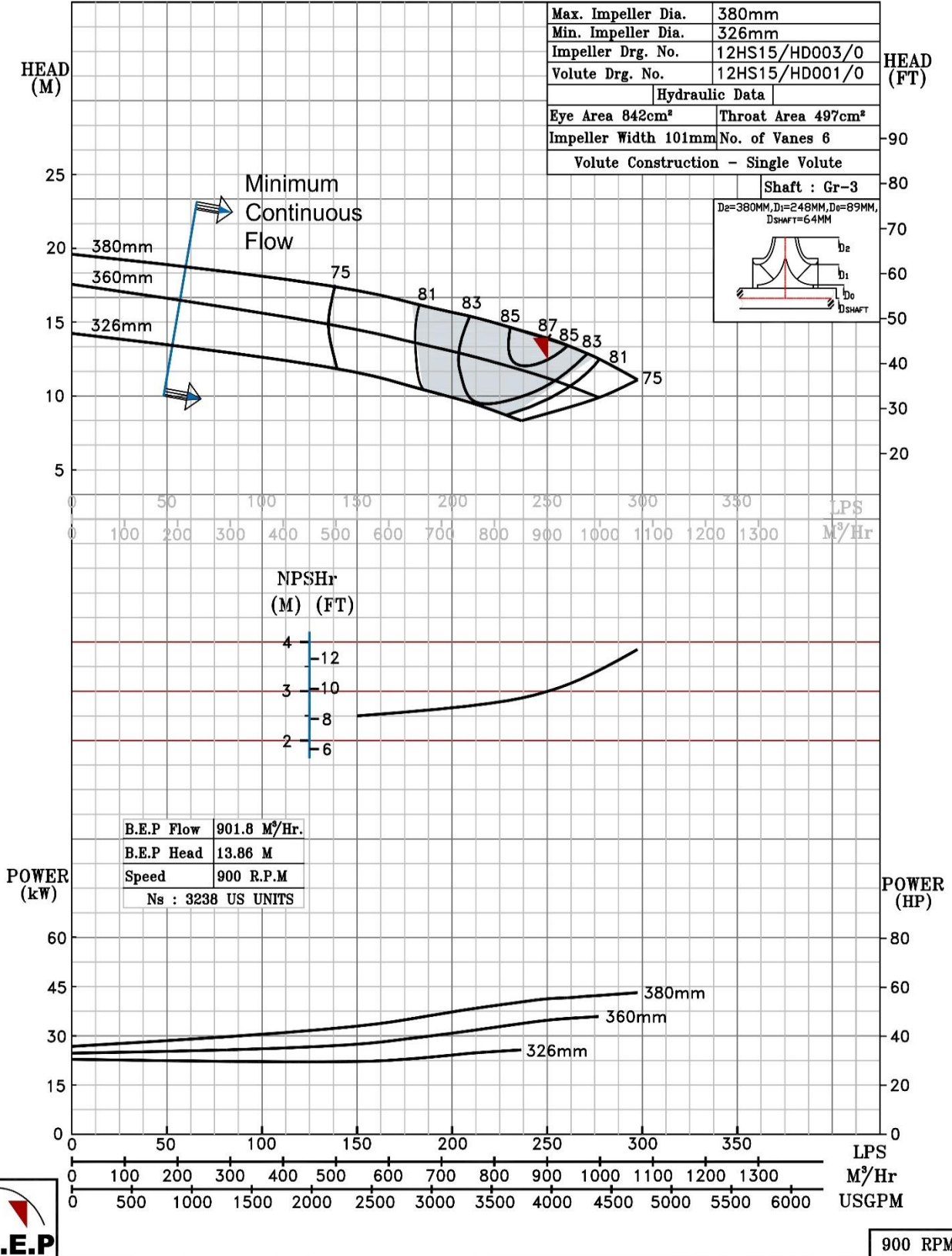


900 RPM


NOTE- PERFORMANCE AS PER ISO 9906 GRADE-2B

PERFORMANCE CURVE OF 12HS15 @900 R.P.M		12HS15/X/104068	
 PUMPSENSE <i>HS RANGE</i>	MODEL 12HS15	WORKING PRESS.	16 bar
	SIZE 350x300-380	TEST PRESS.	24 bar
	TYPE-AXIALLY SPLIT CASE SINGLE STAGE		
	SPEED 900 rpm		

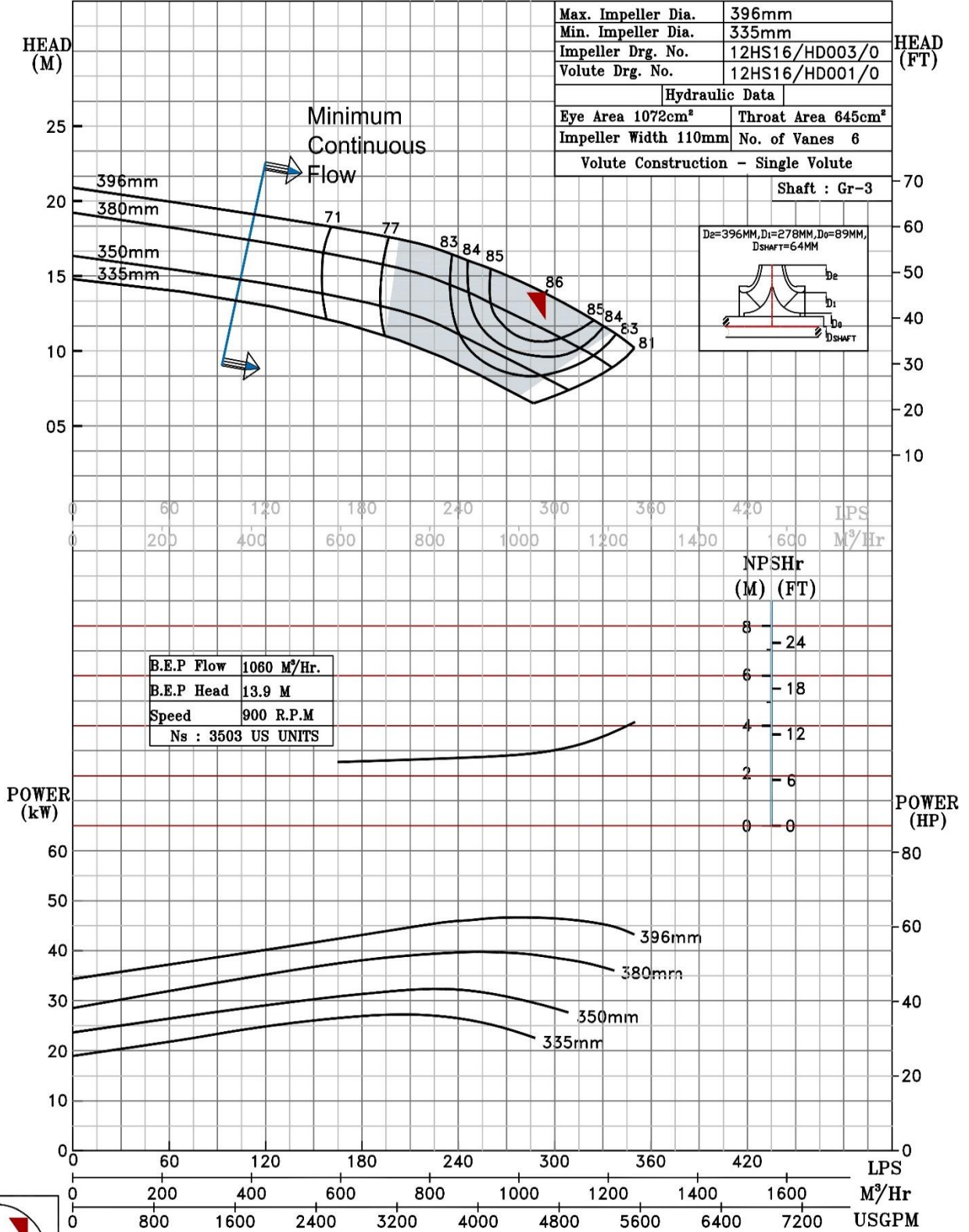
SHADED REGION ON THE H-Q CURVE REPRESENTS OPTIMUM SELECTION ZONE
 PUMP PERFORMANCE CHARACTERISTICS COMPUTED BASED ON CLEAN COLD WATER S.G 1.0




NOTE- PERFORMANCE AS PER ISO 9906 GRADE-2B

PERFORMANCE CURVE OF 12HS16 @900 R.P.M		12HS16/X/104168	
 PUMPSENSE <i>HS RANGE</i>	MODEL 12HS16	WORKING PRESS.	16 bar
	SIZE 400x300-396	TEST PRESS.	24 bar
	TYPE-AXIALLY SPLIT CASE SINGLE STAGE		
	SPEED 900 rpm		

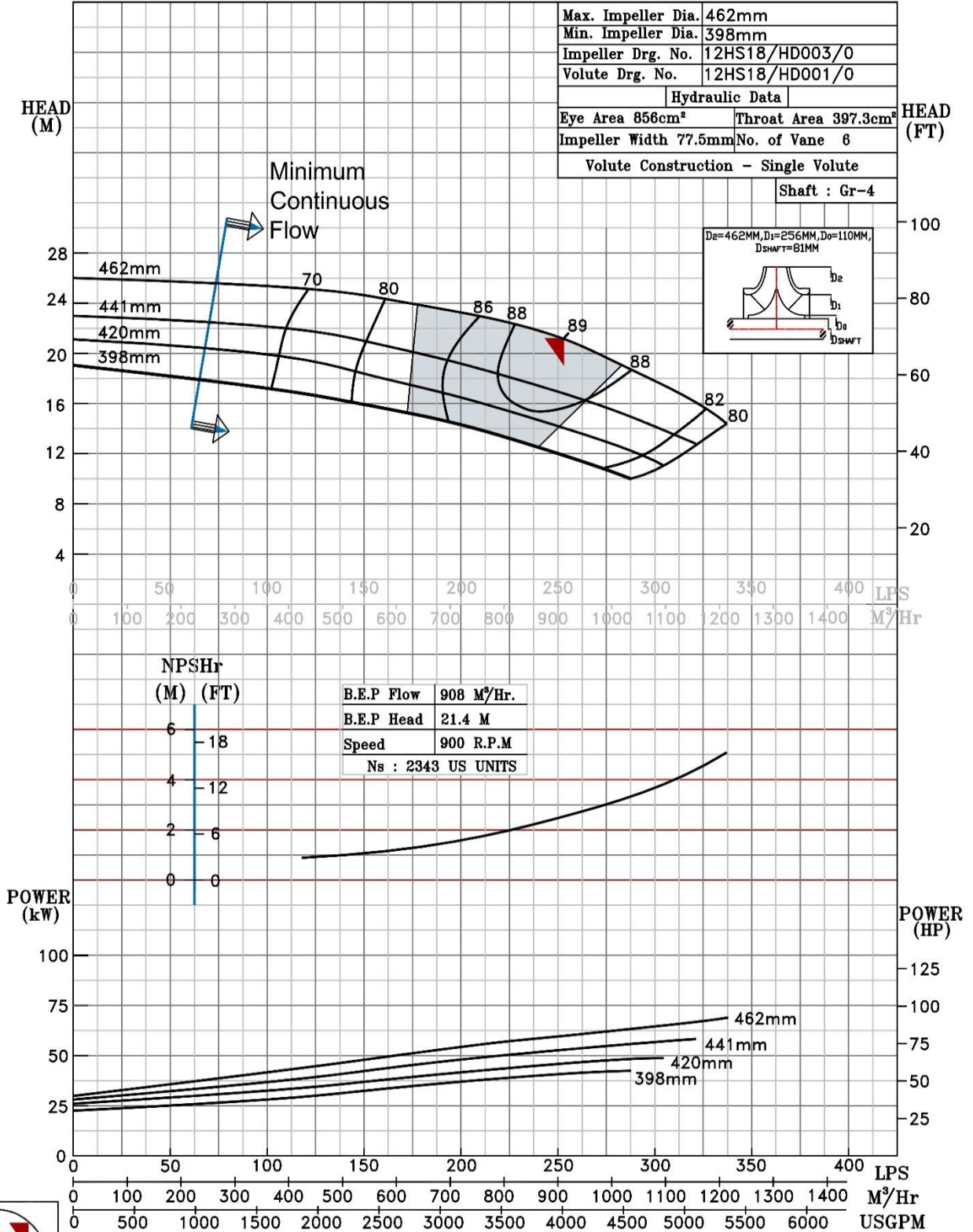
SHADED REGION ON THE H-Q CURVE REPRESENTS OPTIMUM SELECTION ZONE
 PUMP PERFORMANCE CHARACTERISTICS COMPUTED BASED ON CLEAN COLD WATER S.G 1.0




NOTE- PERFORMANCE AS PER ISO 9906 GRADE-2B

PERFORMANCE CURVE OF 12HS18 @900 R.P.M		12HS18/X/104268	
 PUMPSENSE <i>HS RANGE</i>	MODEL 12HS18	WORKING PRESS. 16 bar	
	SIZE 350x300-462	TEST PRESS. 24 bar	
	TYPE-AXIALLY SPLIT CASE SINGLE STAGE		
	SPEED 900 rpm		

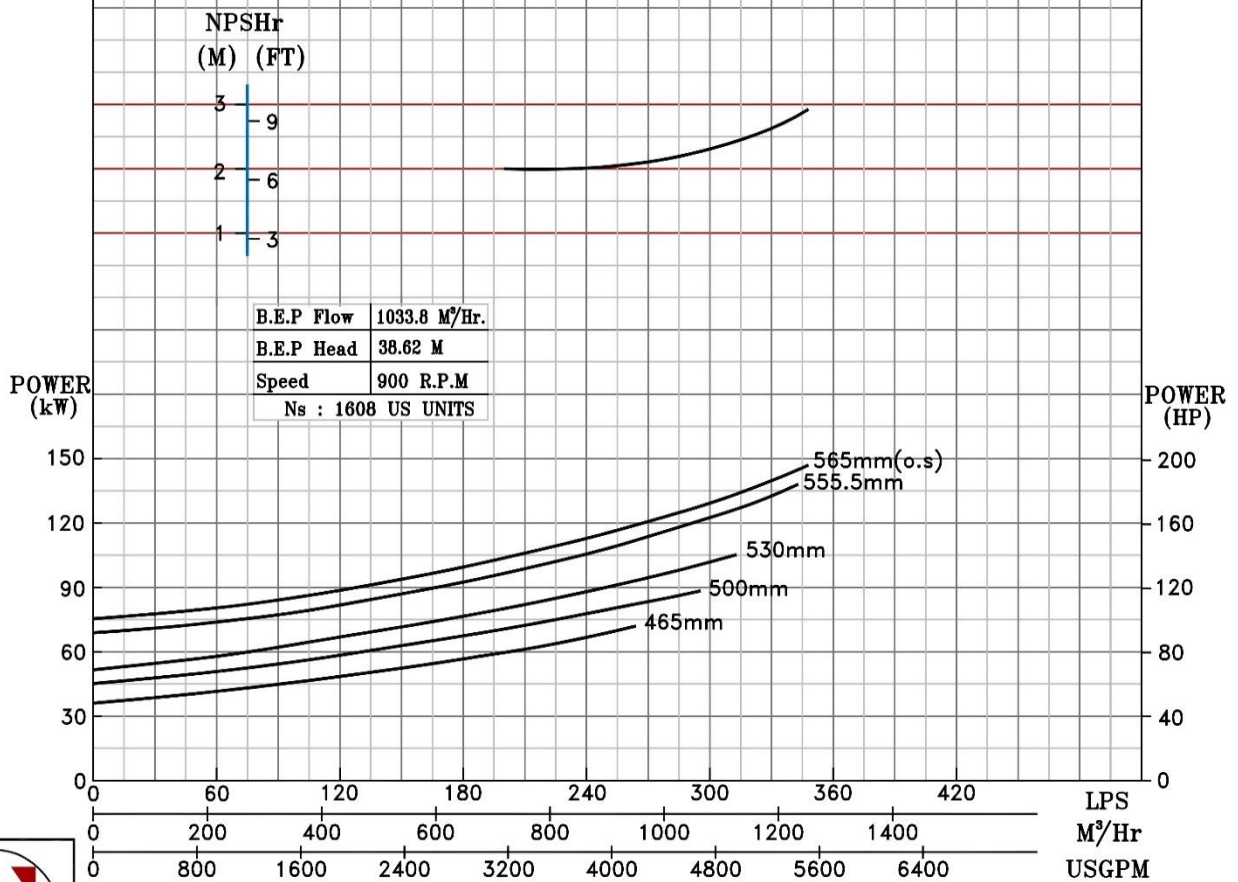
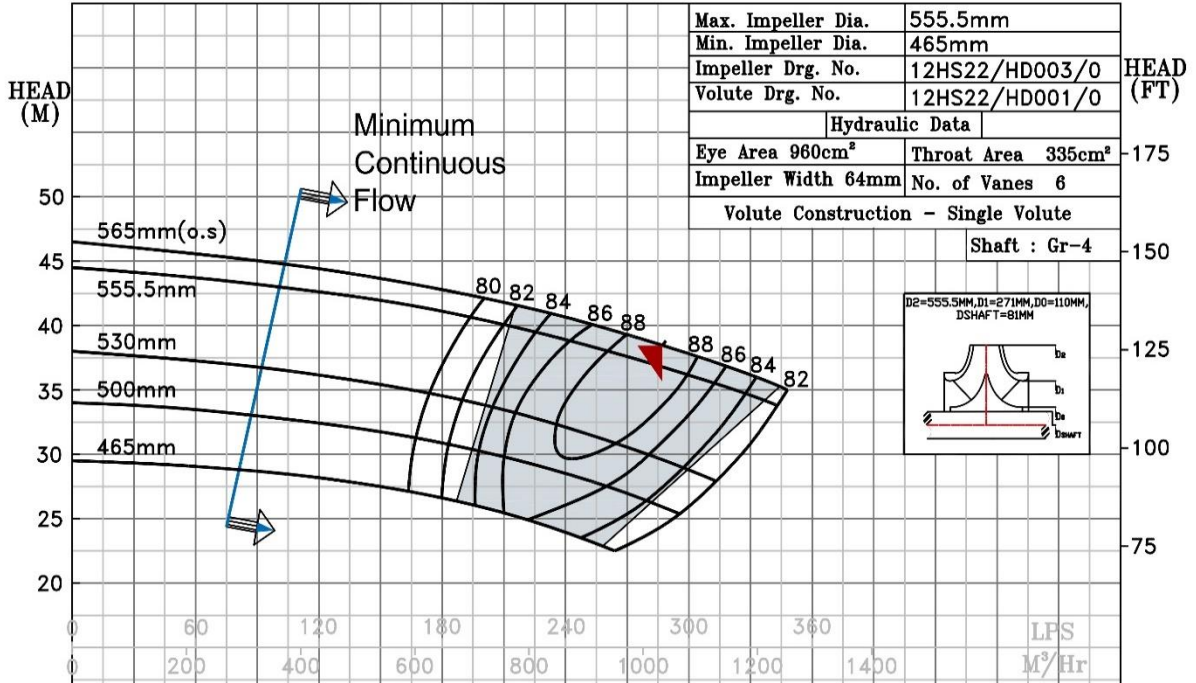
SHADED REGION ON THE H-Q CURVE REPRESENTS OPTIMUM SELECTION ZONE
 PUMP PERFORMANCE CHARACTERISTICS COMPUTED BASED ON CLEAN COLD WATER S.G 1.0



900 RPM


PERFORMANCE CURVE OF 12HS22 @900 R.P.M		12HS22/X/104368	
 PUMPSENSE <i>HS RANGE</i>	MODEL 12HS22	WORKING PRESS. 16 bar	
	SIZE 350x300-555.5	TEST PRESS. 24 bar	
	TYPE-AXIALLY SPLIT CASE SINGLE STAGE		
	SPEED 900 rpm		

SHADED REGION ON THE H-Q CURVE REPRESENTS OPTIMUM SELECTION ZONE
PUMP PERFORMANCE CHARACTERISTICS COMPUTED BASED ON CLEAN COLD WATER S.G 1.0

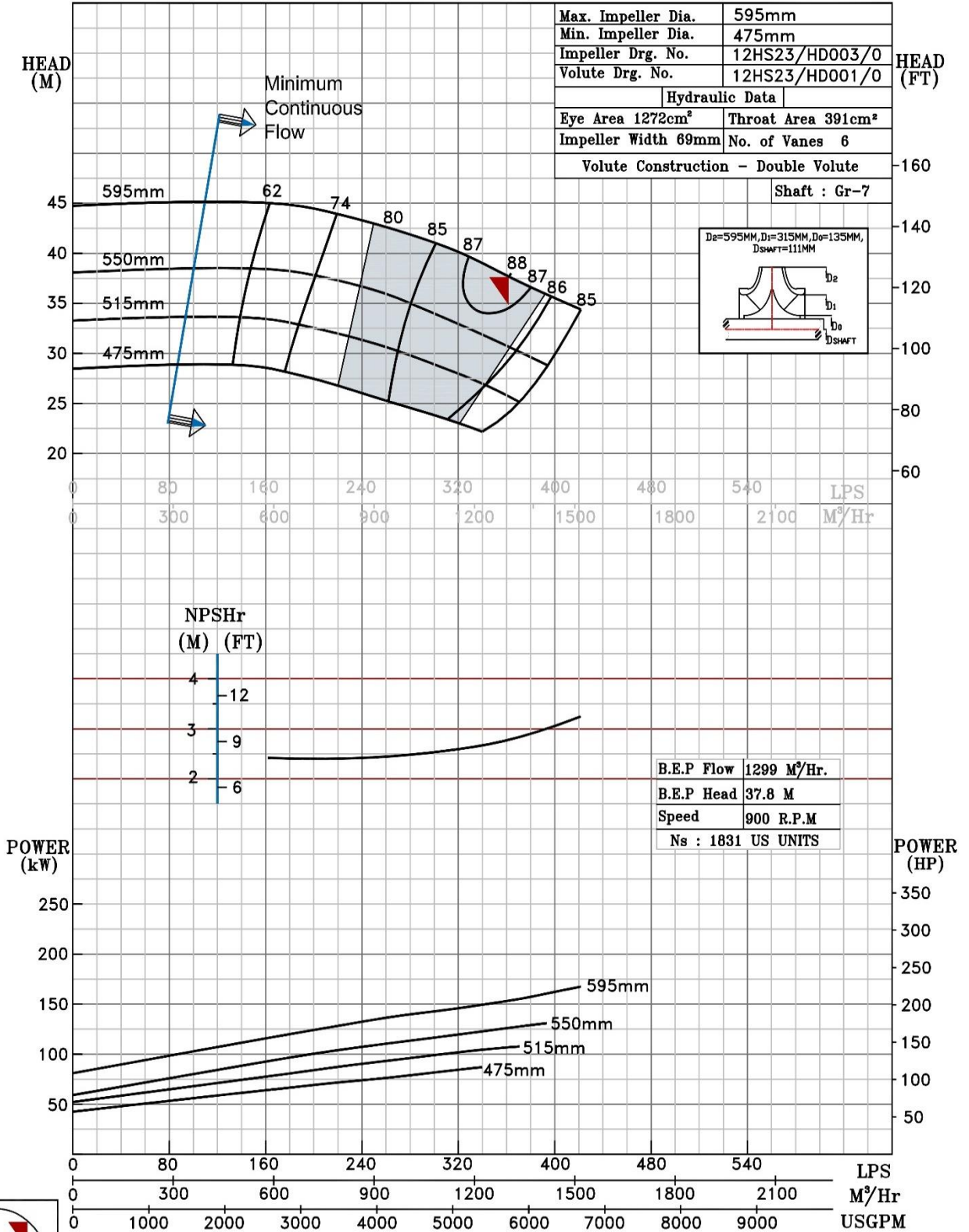


900 RPM

NOTE- PERFORMANCE AS PER ISO 9906 GRADE-2B


PERFORMANCE CURVE OF 12HS23 @900 R.P.M		12HS23/X/104468	
 PUMPSENSE <i>HS RANGE</i>	MODEL 12HS23	WORKING PRESS.	16 bar
	SIZE 350x300-595	TEST PRESS.	24 bar
	TYPE-AXIALLY SPLIT CASE SINGLE STAGE		
			SPEED 900 rpm

SHADED REGION ON THE H-Q CURVE REPRESENTS OPTIMUM SELECTION ZONE
 PUMP PERFORMANCE CHARACTERISTICS COMPUTED BASED ON CLEAN COLD WATER S.G 1.0

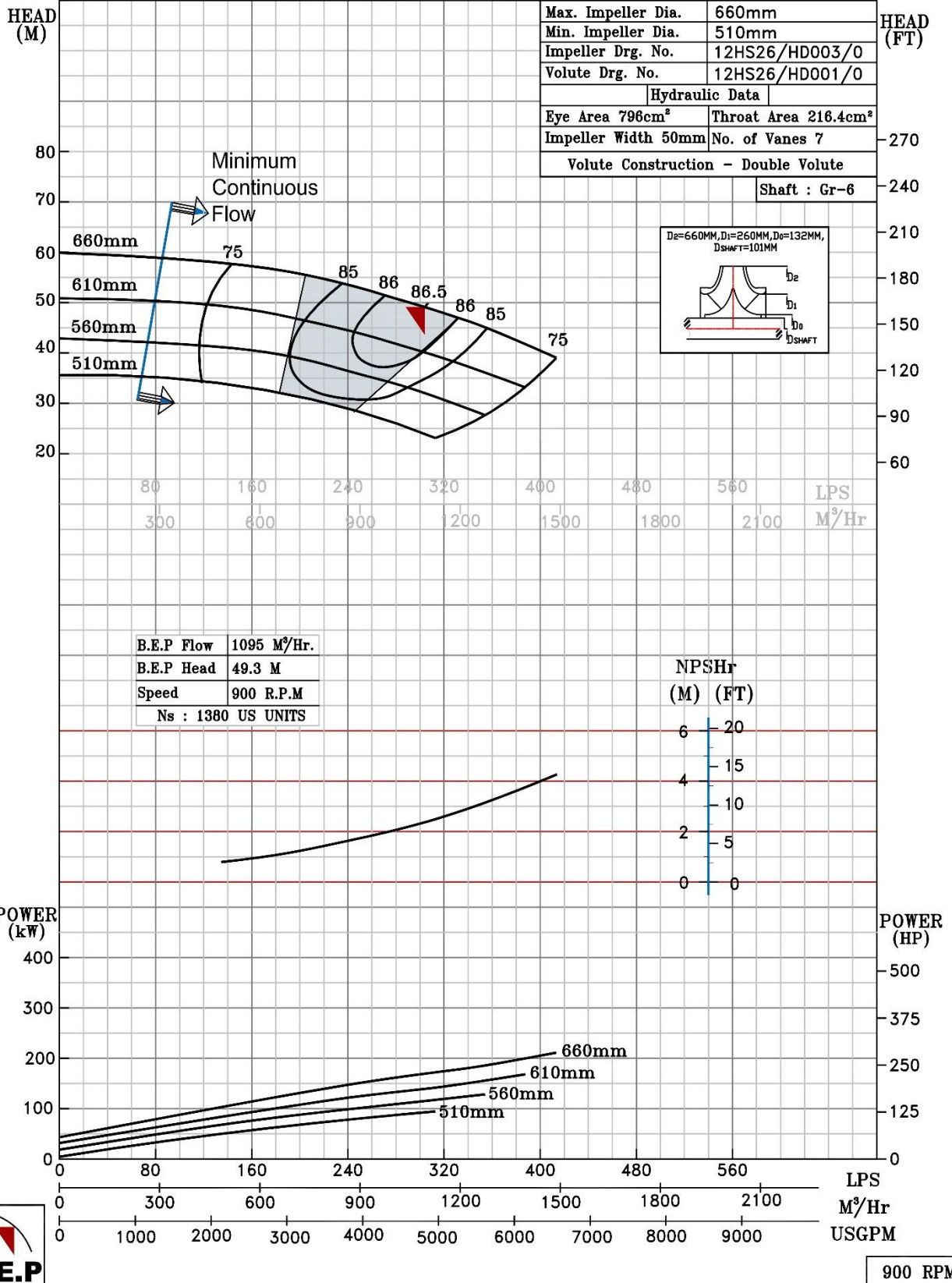


900 RPM


NOTE- PERFORMANCE AS PER ISO 9906 GRADE-2B

PERFORMANCE CURVE OF 12HS26 @900 R.P.M		12HS26/X/104568	
 PUMPSENSE <i>HS RANGE</i>	MODEL 12HS26	WORKING PRESS.	20 bar
	SIZE 350x300-660	TEST PRESS.	30 bar
	TYPE-AXIALLY SPLIT CASE SINGLE STAGE		
			SPEED 900 rpm

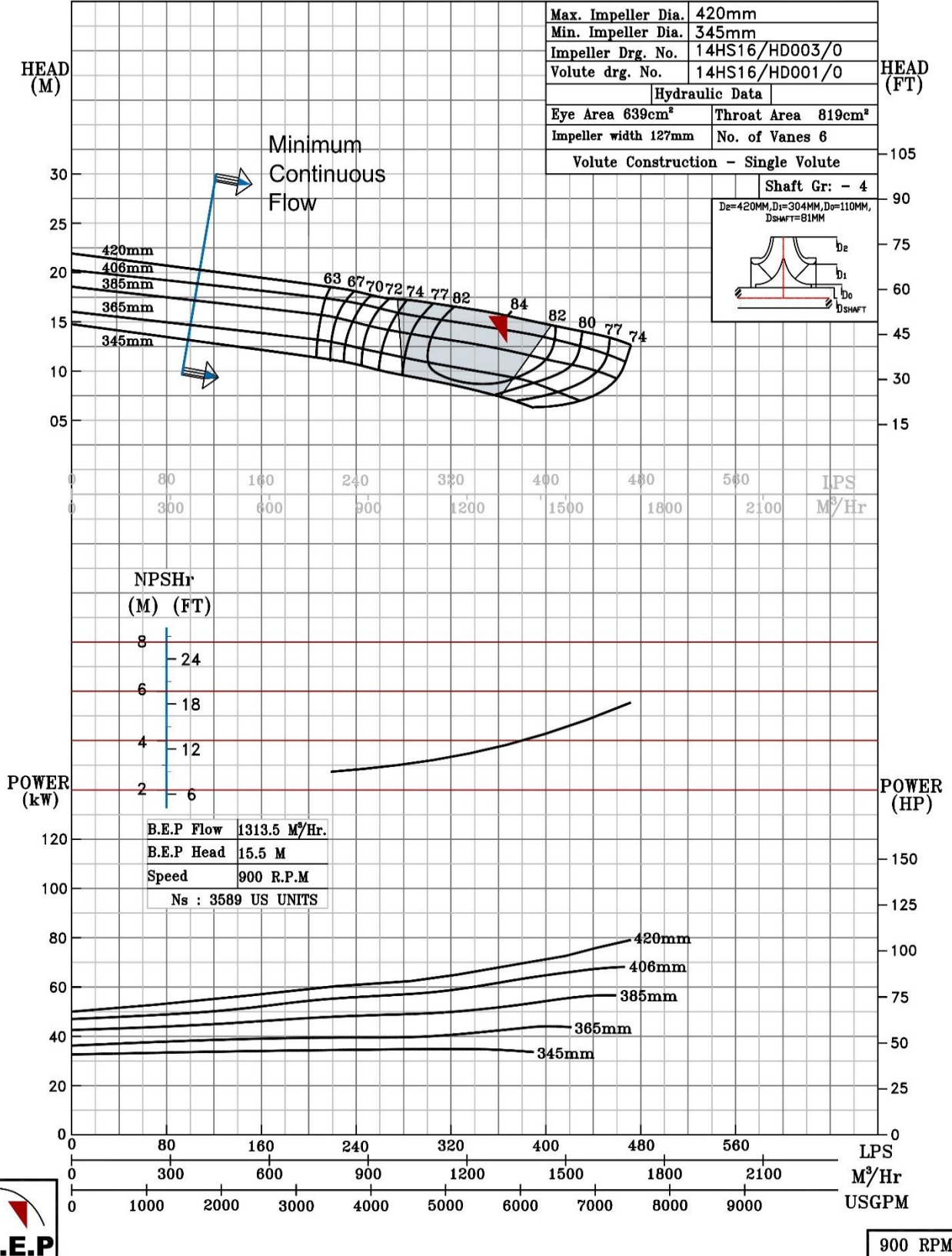
SHADED REGION ON THE H-Q CURVE REPRESENTS OPTIMUM SELECTION ZONE
 PUMP PERFORMANCE CHARACTERISTICS COMPUTED BASED ON CLEAN COLD WATER S.G 1.0




NOTE- PERFORMANCE AS PER ISO 9906 GRADE-2B

PERFORMANCE CURVE OF 14HS16 @900 R.P.M		14HS16/X/104668	
 PUMPSENSE <i>HS RANGE</i>	MODEL	14HS16	WORKING PRESS. 16 bar
	SIZE	400X350-420	TEST PRESS. 24 bar
	TYPE-AXIALLY SPLIT CASE SINGLE STAGE		

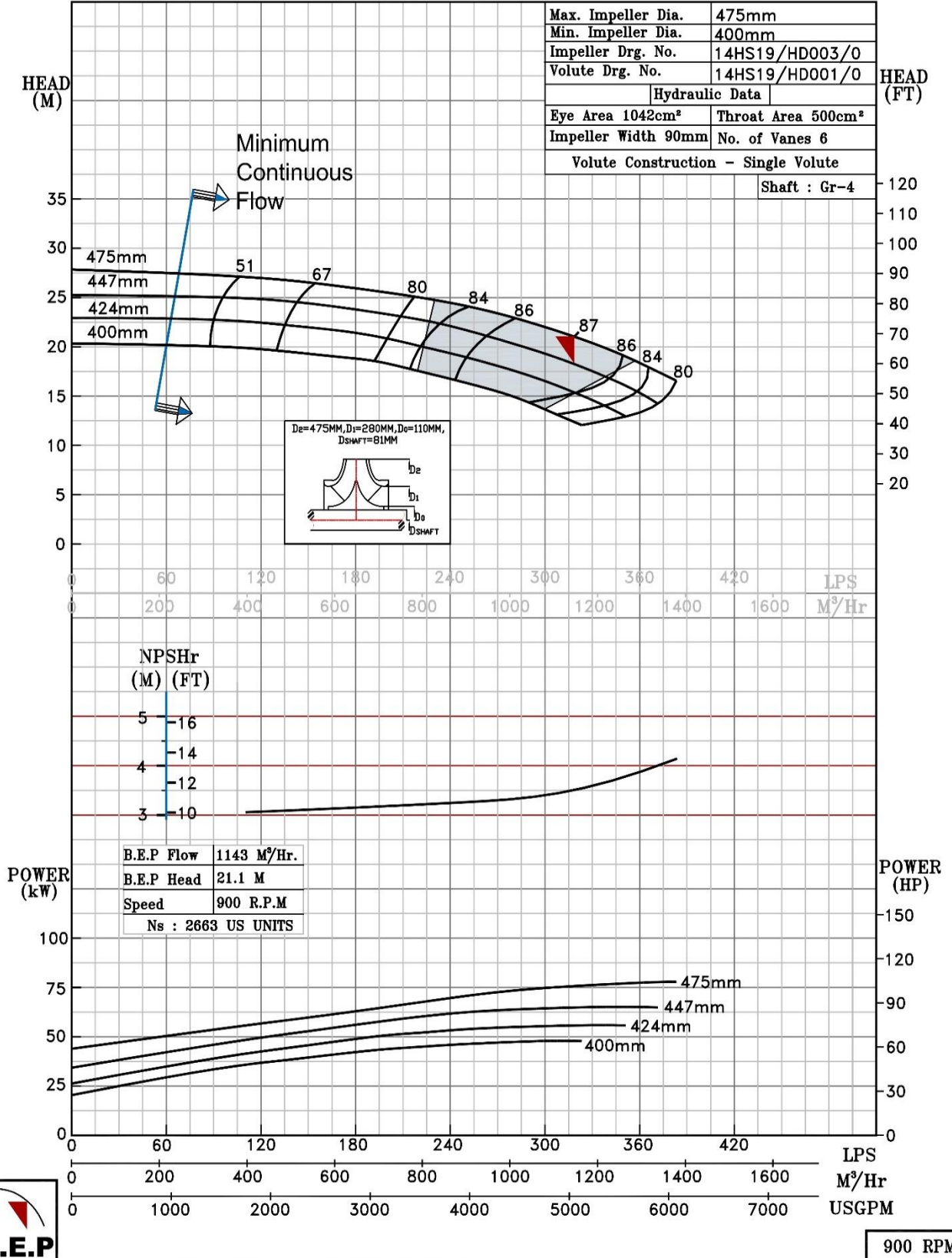
SHADED REGION ON THE H-Q CURVE REPRESENTS OPTIMUM SELECTION ZONE
 PUMP PERFORMANCE CHARACTERISTICS COMPUTED BASED ON CLEAN COLD WATER S.G 1.0




NOTE- PERFORMANCE AS PER ISO 9906 GRADE-2B

PERFORMANCE CURVE OF 14HS19 @900 R.P.M		14HS19/X/104768	
 PUMPSENSE <i>HS RANGE</i>	MODEL 14HS19	WORKING PRESS.	20 bar
	SIZE 450x350-475	TEST PRESS.	30 bar
	TYPE-AXIALLY SPLIT CASE SINGLE STAGE		
	SPEED 900 rpm		

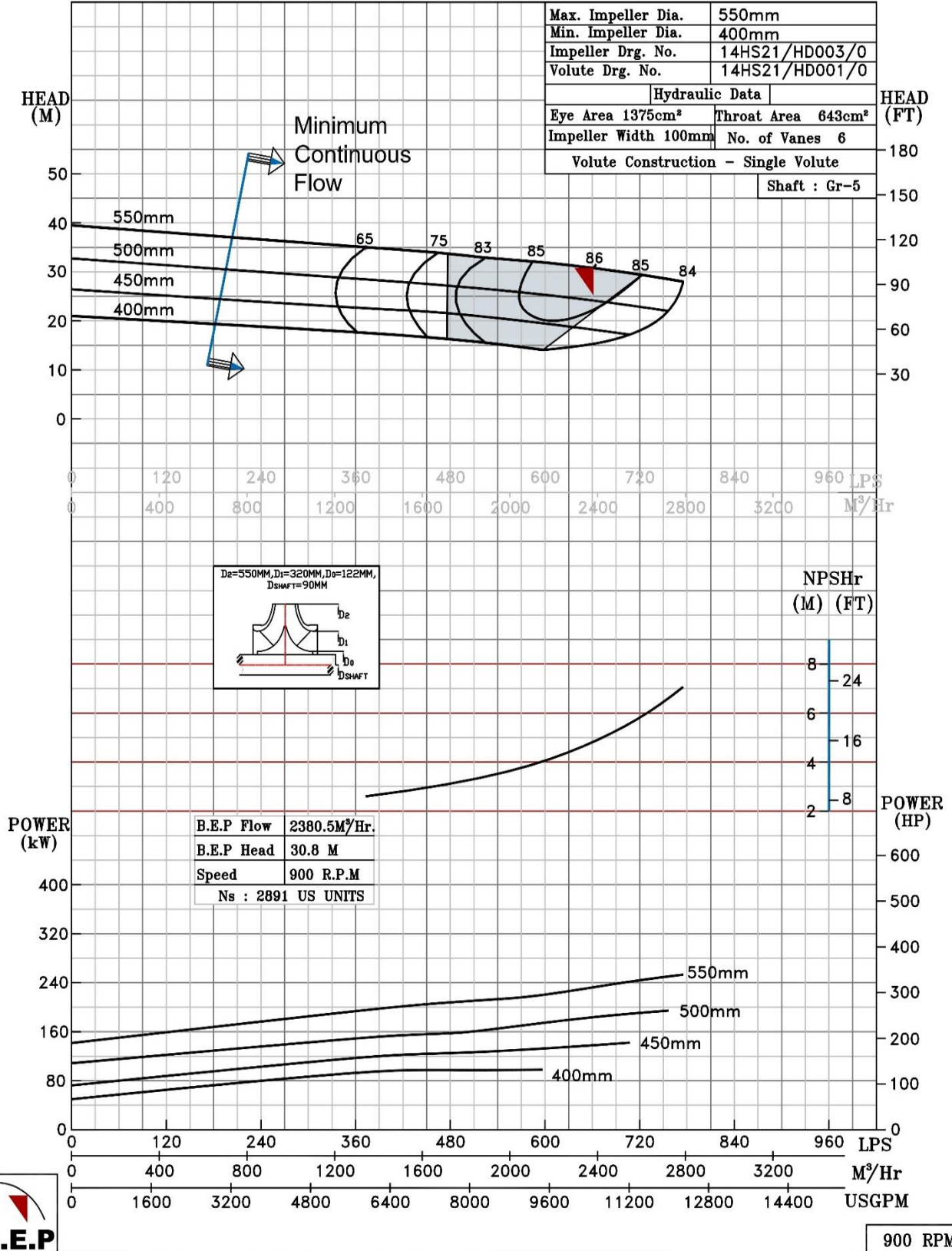
SHADED REGION ON THE H-Q CURVE REPRESENTS OPTIMUM SELECTION ZONE
 PUMP PERFORMANCE CHARACTERISTICS COMPUTED BASED ON CLEAN COLD WATER S.G 1.0




NOTE- PERFORMANCE AS PER ISO 9906 GRADE-2B

PERFORMANCE CURVE OF 14HS21 @900 R.P.M		14HS21/X/104868	
 PUMPSENSE <i>HS RANGE</i>	MODEL 14HS21	WORKING PRESS.	20 bar
	SIZE 400x350-550	TEST PRESS.	30 bar
	TYPE-AXIALLY SPLIT CASE SINGLE STAGE		
	SPEED 900 rpm		

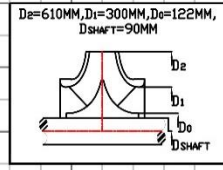
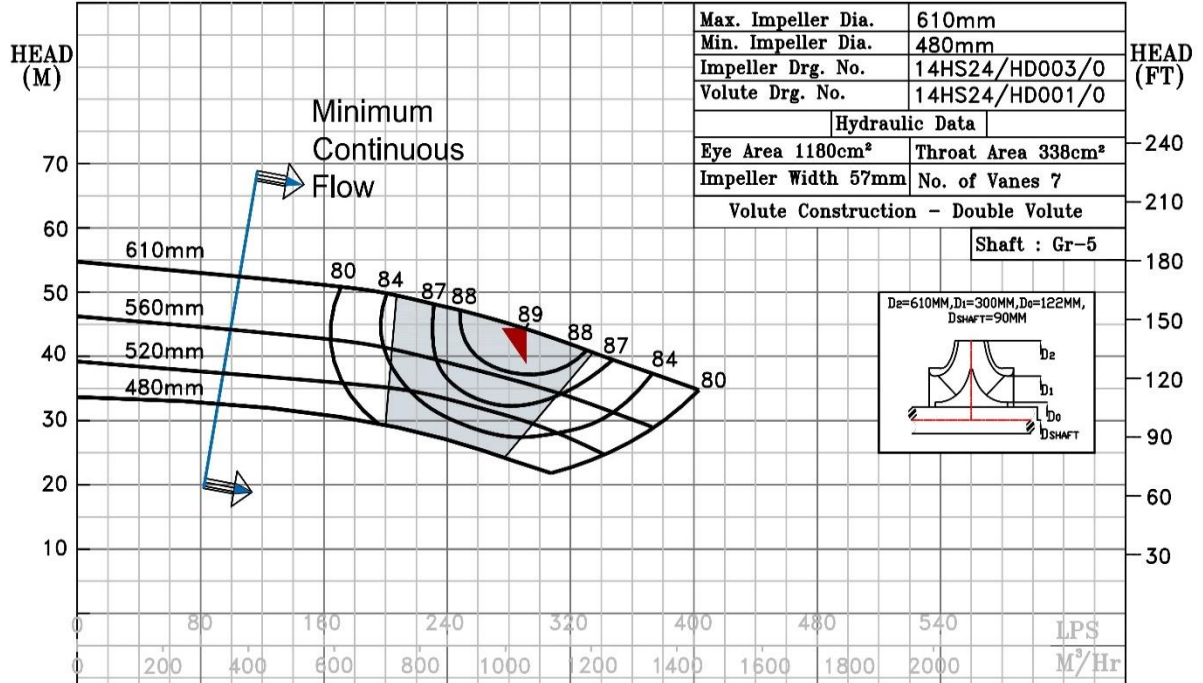
SHADED REGION ON THE H-Q CURVE REPRESENTS OPTIMUM SELECTION ZONE
 PUMP PERFORMANCE CHARACTERISTICS COMPUTED BASED ON CLEAN COLD WATER S.G 1.0



NOTE- PERFORMANCE AS PER ISO 9906 GRADE-2B

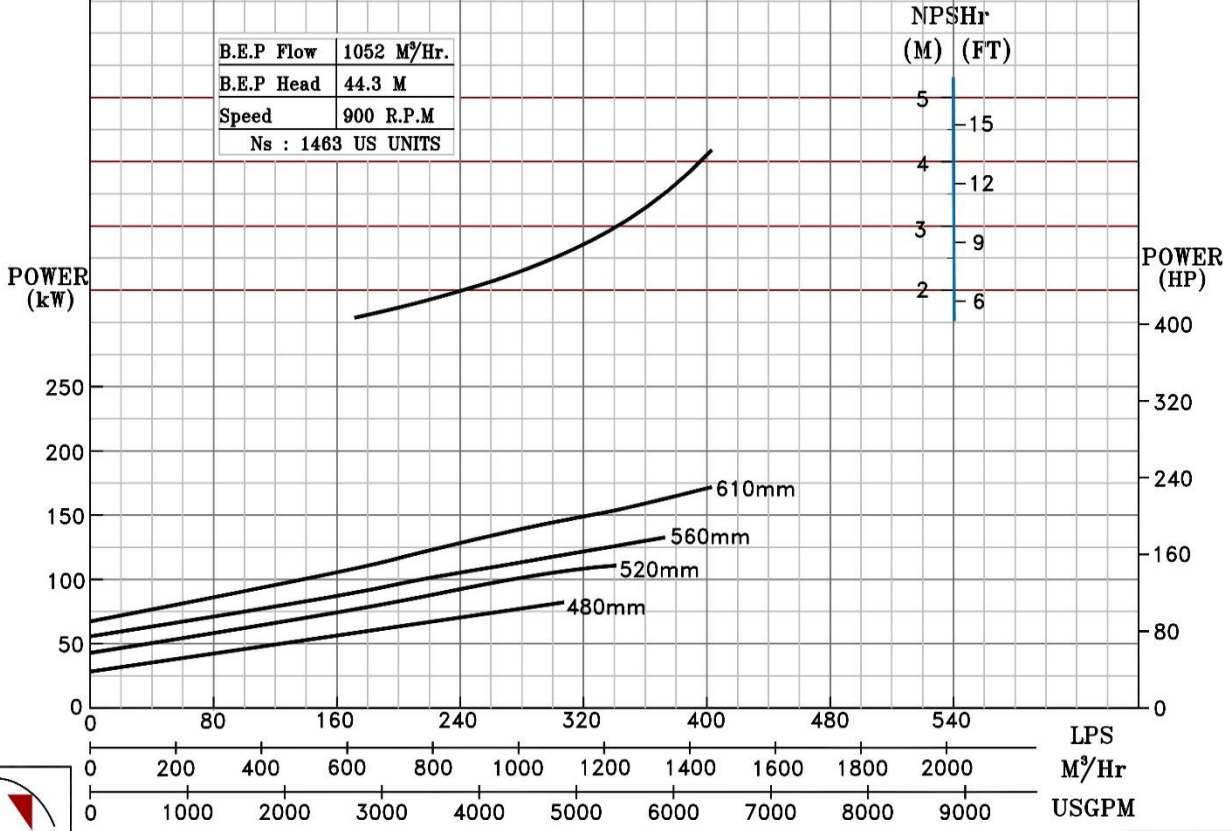
PERFORMANCE CURVE OF 14HS24 @900 R.P.M		14HS24/X/104968	
 PUMPSENSE <i>HS RANGE</i>	MODEL 14HS24	WORKING PRESS.	20 bar
	SIZE 400x350-610	TEST PRESS.	30 bar
	TYPE-AXIALLY SPLIT CASE SINGLE STAGE		
	SPEED 900 rpm		

SHADED REGION ON THE H-Q CURVE REPRESENTS OPTIMUM SELECTION ZONE
 PUMP PERFORMANCE CHARACTERISTICS COMPUTED BASED ON CLEAN COLD WATER S.G 1.0




B.E.P Flow	1052 M ³ /Hr.
B.E.P Head	44.3 M
Speed	900 R.P.M
Ns	1463 US UNITS

NPSHr	
(M)	(FT)
5	15
4	12
3	9
2	6

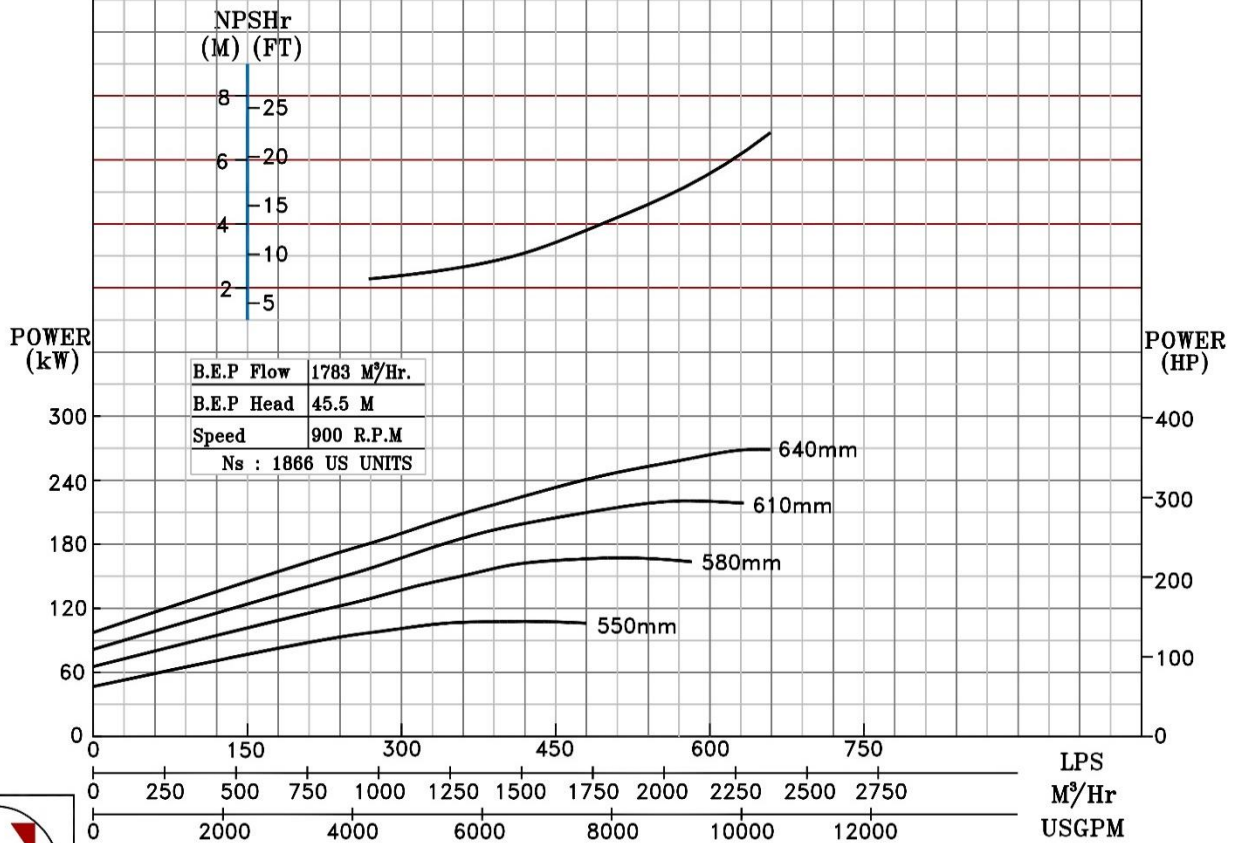
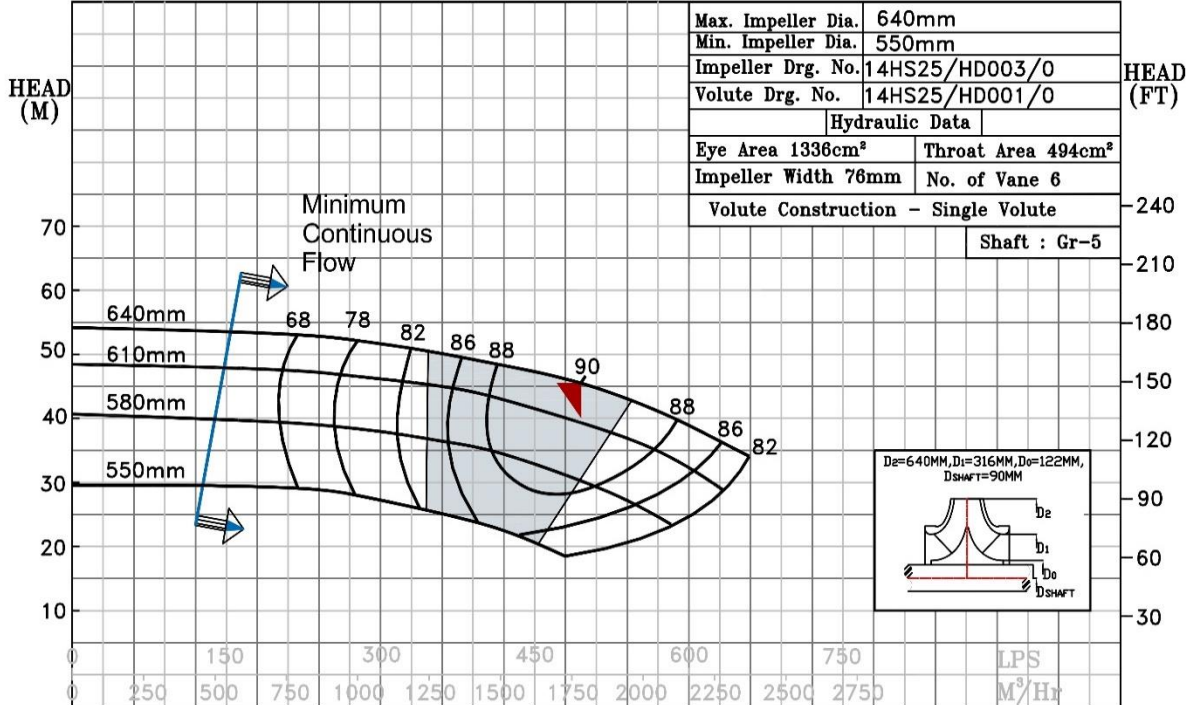


900 RPM

NOTE- PERFORMANCE AS PER ISO 9906 GRADE-2B


PERFORMANCE CURVE OF 14HS25 @900 R.P.M		14HS25/X/105068	
 PUMPSENSE <i>HS RANGE</i>	MODEL 14HS25	WORKING PRESS.	20 bar
	SIZE 400x350-640	TEST PRESS.	30 bar
	TYPE-AXIALLY SPLIT CASE SINGLE STAGE		
			SPEED 900 rpm

SHADED REGION ON THE H-Q CURVE REPRESENTS OPTIMUM SELECTION ZONE
 PUMP PERFORMANCE CHARACTERISTICS COMPUTED BASED ON CLEAN COLD WATER S.G 1.0

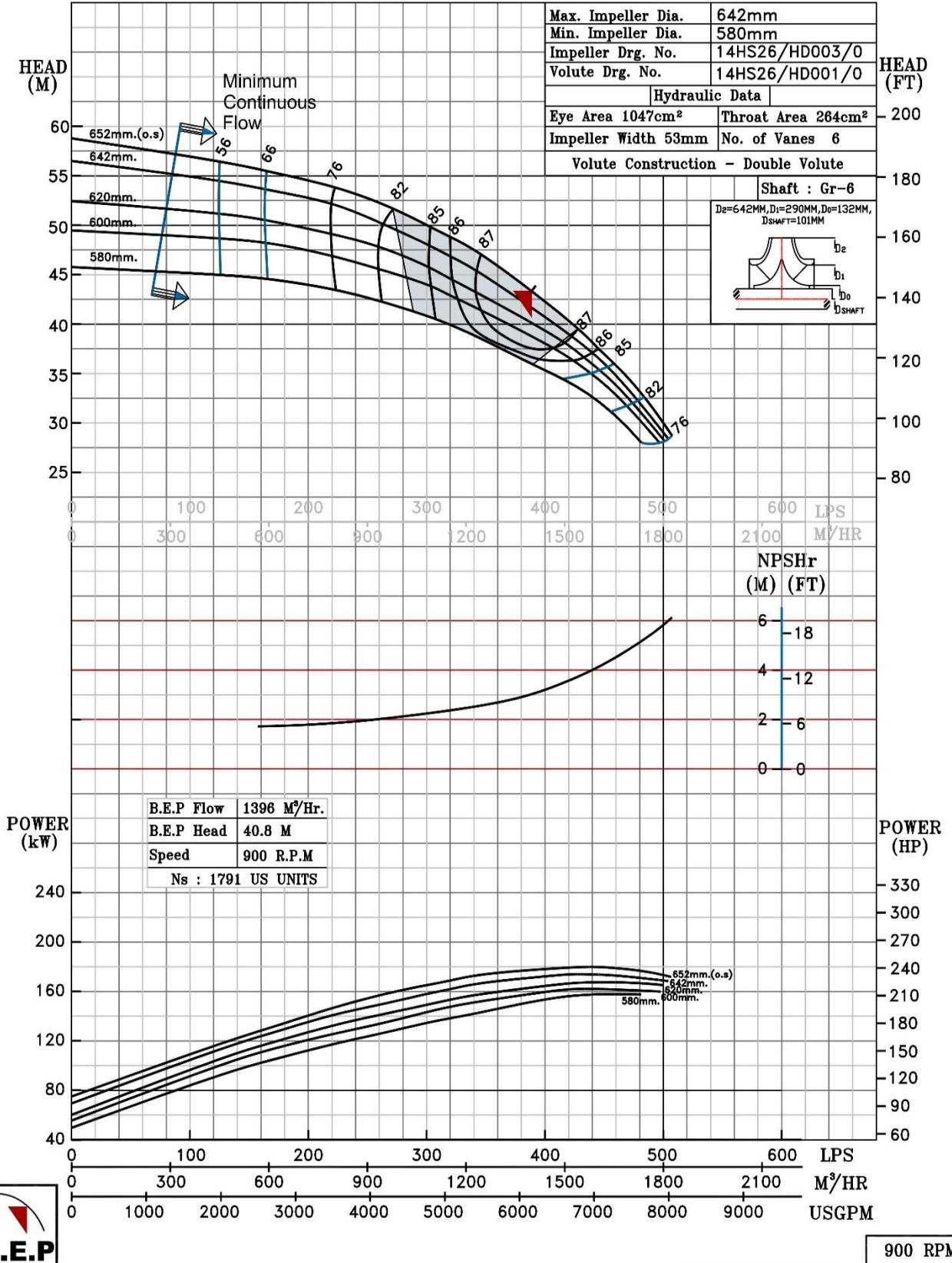


900 RPM


NOTE- PERFORMANCE AS PER ISO 9906 GRADE-2B

PERFORMANCE CURVE OF 14HS26 @900 R.P.M		14HS26/X/105168	
 PUMPSENSE <i>HS RANGE</i>	MODEL 14HS26	WORKING PRESS. 14 bar	
	SIZE 400x350-642	TEST PRESS. 21 bar	
	TYPE-AXIALLY SPLIT CASE SINGLE STAGE		
	SPEED 900 rpm		

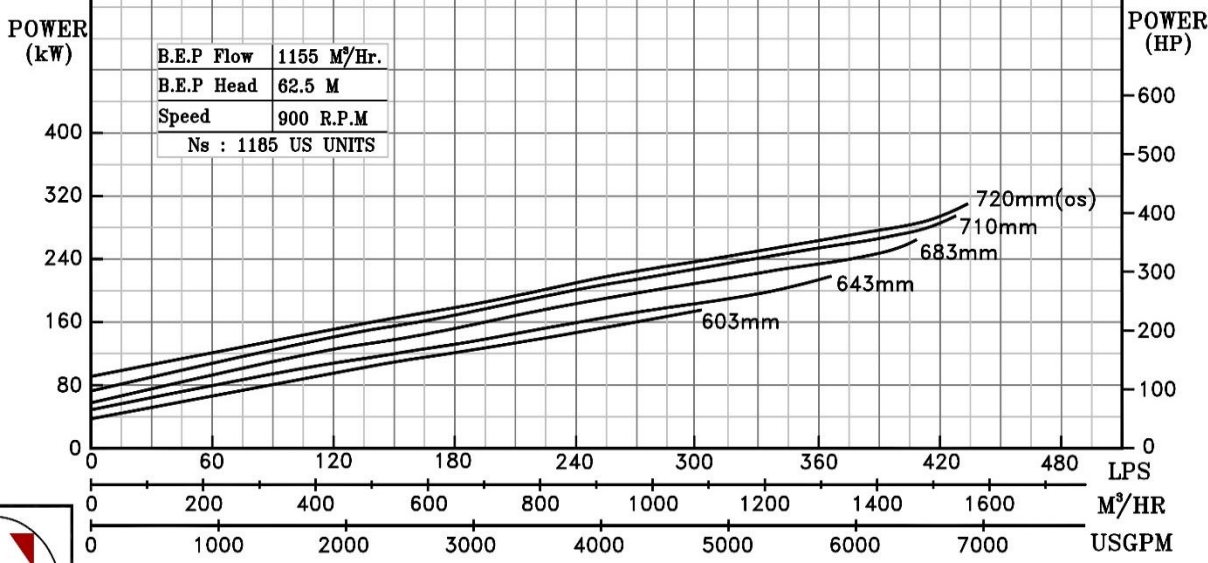
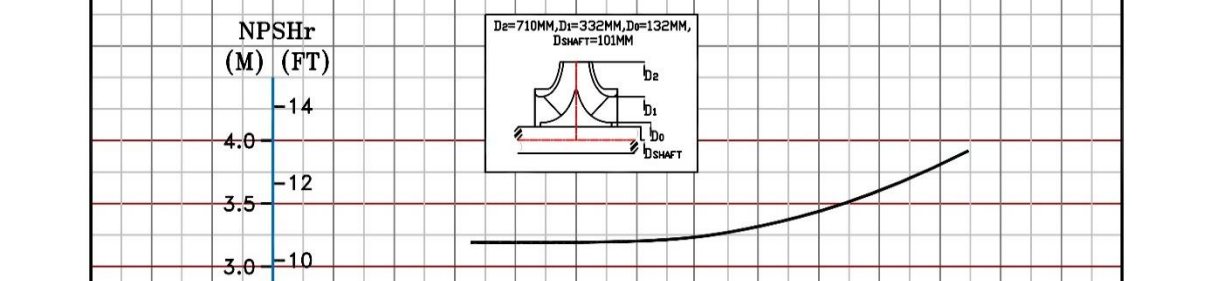
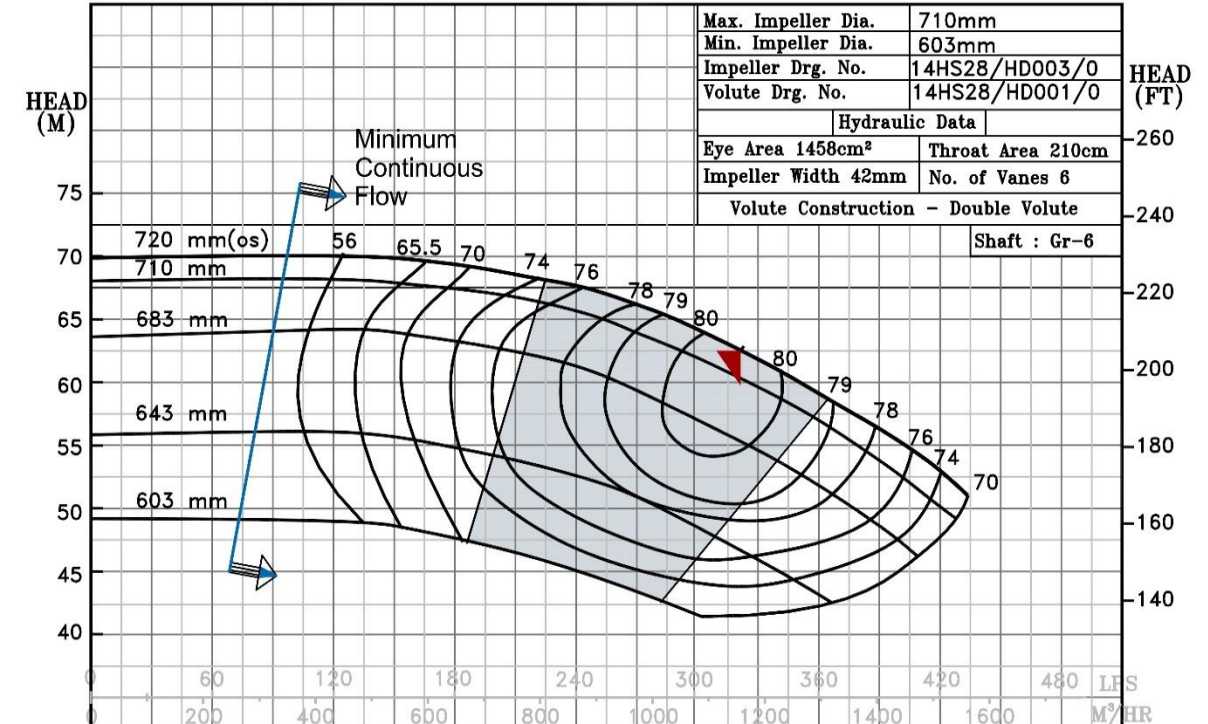
SHADED REGION ON THE H-Q CURVE REPRESENTS OPTIMUM SELECTION ZONE
 PUMP PERFORMANCE CHARACTERISTICS COMPUTED BASED ON CLEAN COLD WATER S.G 1.0



NOTE- PERFORMANCE AS PER ISO 9906 GRADE-2B


PERFORMANCE CURVE OF 14HS28 @900 R.P.M		14HS28/X/105268
 PUMPSENSE <i>HS RANGE</i>	MODEL 14HS28	WORKING PRESS. 16 bar
	SIZE 450x350-710	TEST PRESS. 24 bar
	TYPE-AXIALLY SPLIT CASE SINGLE STAGE	
	SPEED 900 rpm	

SHADED REGION ON THE H-Q CURVE REPRESENTS OPTIMUM SELECTION ZONE
 PUMP PERFORMANCE CHARACTERISTICS COMPUTED BASED ON CLEAN COLD WATER S.G 1.0

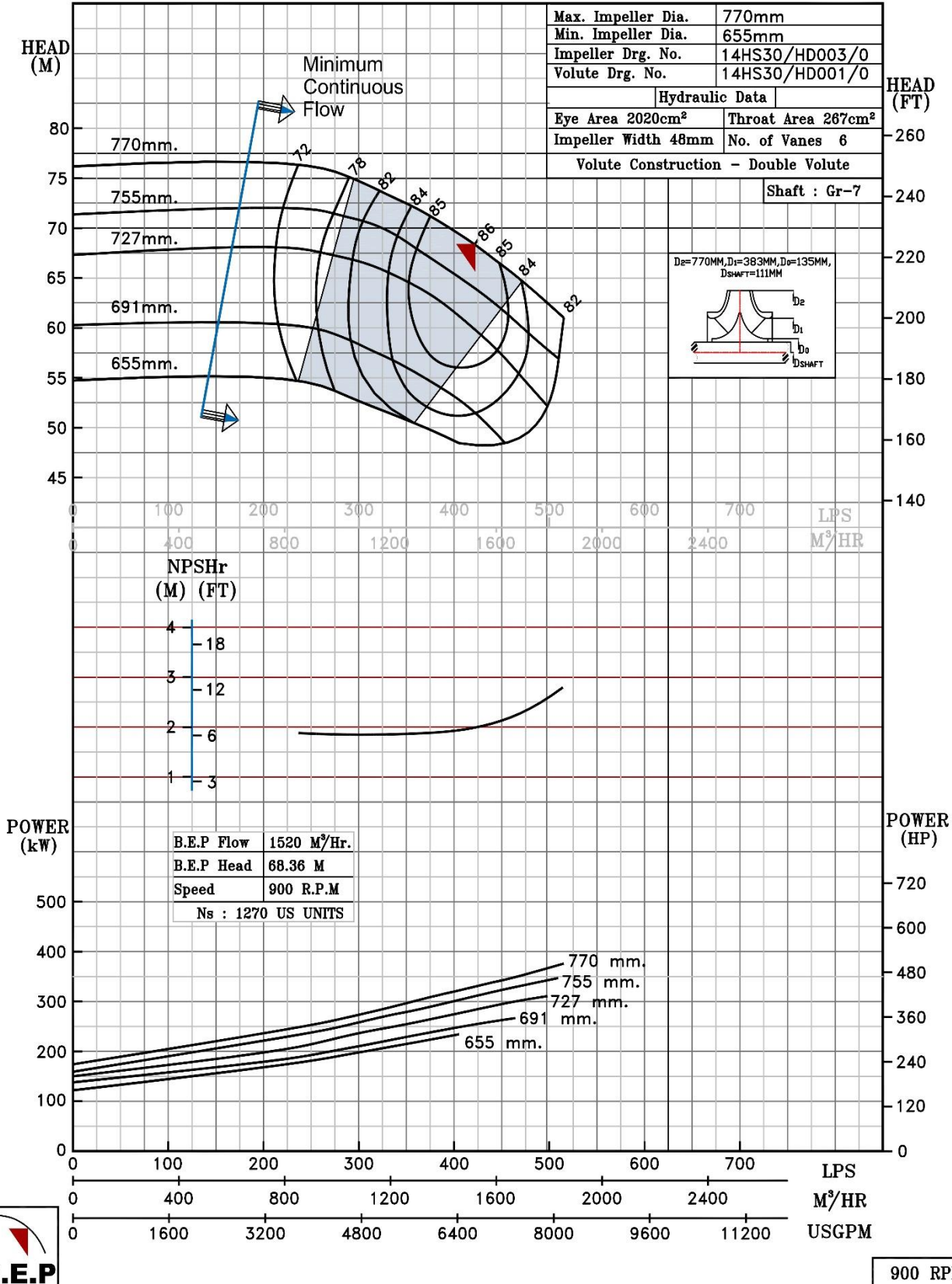


900 RPM

NOTE- PERFORMANCE AS PER ISO 9906 GRADE-2B

PERFORMANCE CURVE OF 14HS30 @900 R.P.M		14HS30/X/105368	
 PUMPSENSE <i>HS RANGE</i>	MODEL 14HS30	WORKING PRESS. 20 bar	
	SIZE 450x350-770	TEST PRESS. 30 bar	
	TYPE-AXIALY SPLIT CASE SINGLE STAGE		
	SPEED 900 rpm		

SHADED REGION ON THE H-Q CURVE REPRESENTS OPTIMUM SELECTION ZONE
 PUMP PERFORMANCE CHARACTERISTICS COMPUTED BASED ON CLEAN COLD WATER S.G 1.0



900 RPM

NOTE- PERFORMANCE AS PER ISO 9906 GRADE-2B

PERFORMANCE CURVE OF 16HS21 @900 R.P.M

16HS21/X/105468

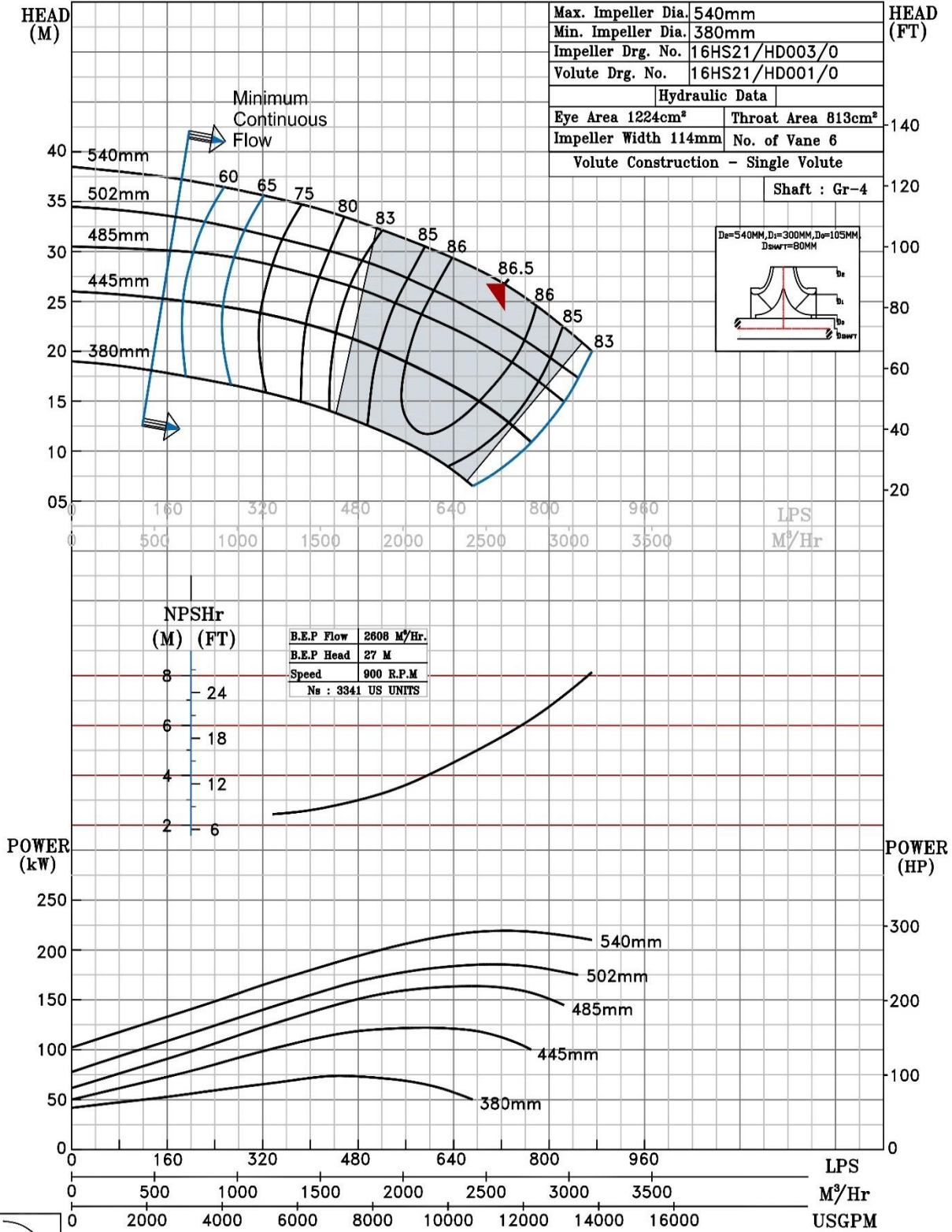


PUMPSENSE

HS RANGE


MODEL 16HS21	WORKING PRESS. 16 bar
SIZE 500x400-540	TEST PRESS. 24 bar
TYPE-AXIALLY SPLIT CASE SINGLE STAGE	
SPEED 900 rpm	

SHADED REGION ON THE H-Q CURVE REPRESENTS OPTIMUM SELECTION ZONE
 PUMP PERFORMANCE CHARACTERISTICS COMPUTED BASED ON CLEAN COLD WATER S.G 1.0

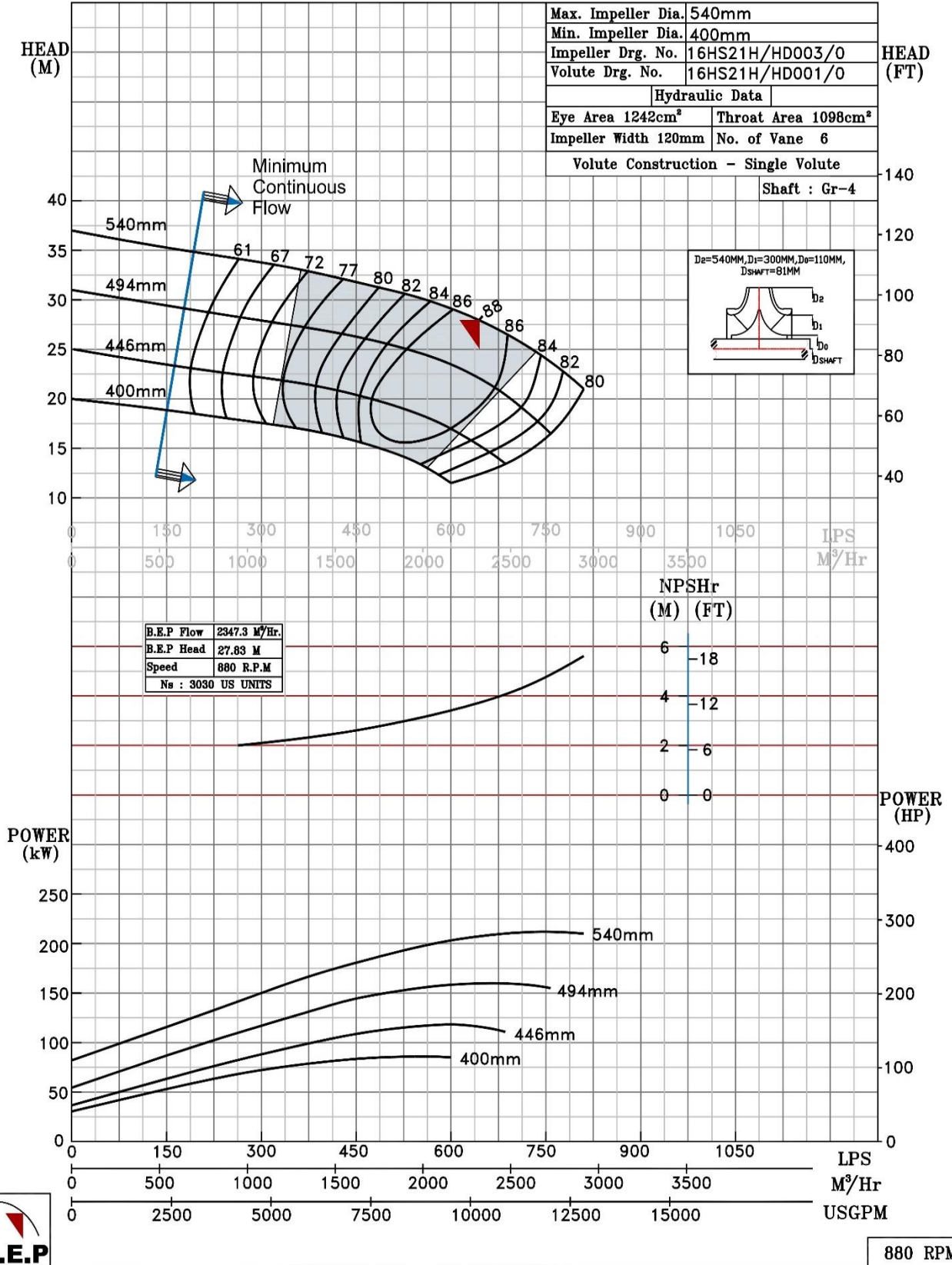


900 RPM


NOTE- PERFORMANCE AS PER ISO 9906 GRADE-2B

PERFORMANCE CURVE OF 16HS21H @880 R.P.M		16HS21H/X/105568	
 PUMPSENSE <i>HS RANGE</i>	MODEL 16HS21H	WORKING PRESS. 16 bar	
	SIZE 500x400-540	TEST PRESS. 24 bar	
	TYPE-AXIALLY SPLIT CASE SINGLE STAGE		
	SPEED 880 rpm		

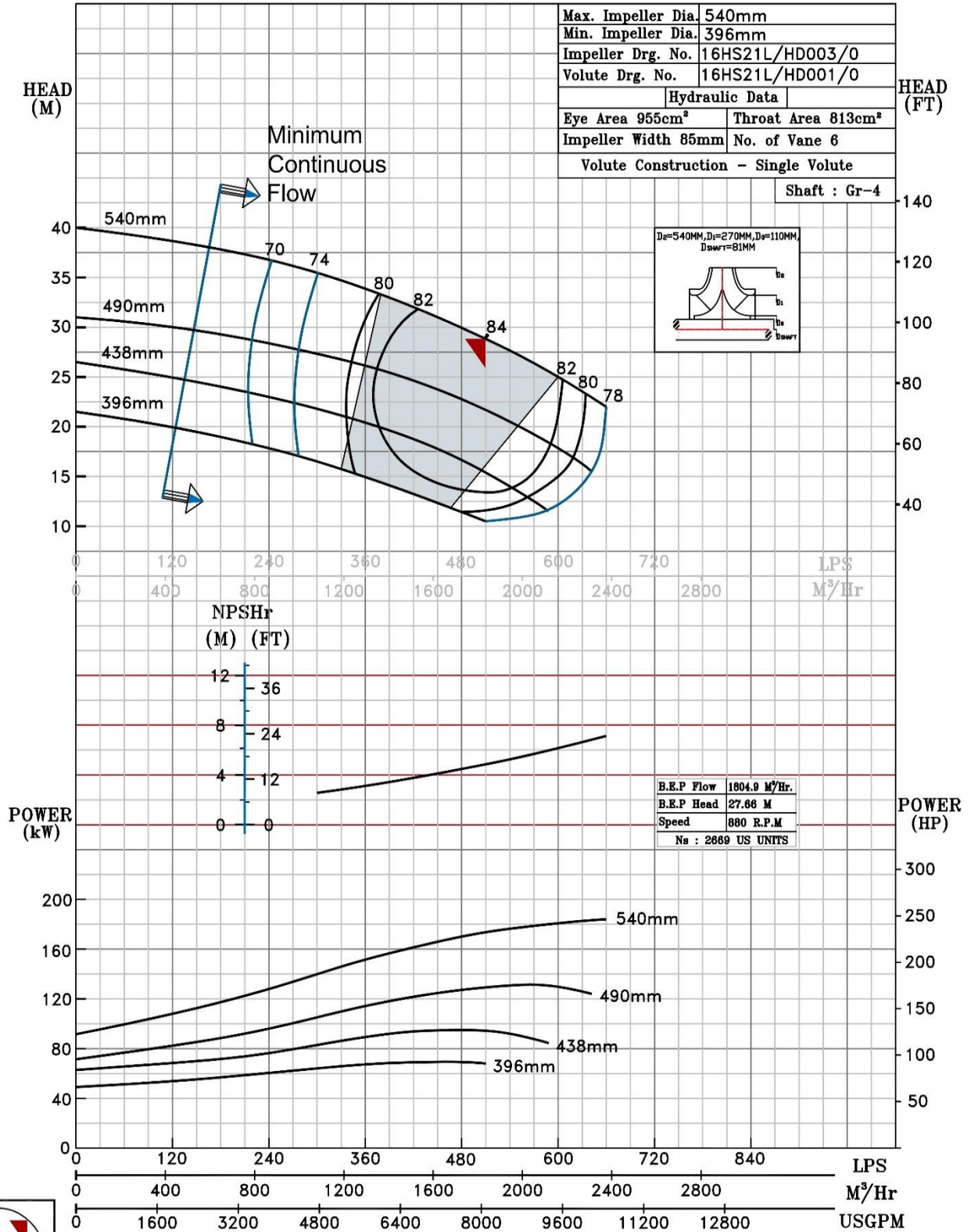
SHADED REGION ON THE H-Q CURVE REPRESENTS OPTIMUM SELECTION ZONE
 PUMP PERFORMANCE CHARACTERISTICS COMPUTED BASED ON CLEAN COLD WATER S.G 1.0



NOTE- PERFORMANCE AS PER ISO 9906 GRADE-2B


PERFORMANCE CURVE OF 16HS21L @880 R.P.M		16HS21L/X/105668	
 PUMPSENSE <i>HS RANGE</i>	MODEL	16HS21L	WORKING PRESS. 16 bar
	SIZE	500x400-540	TEST PRESS. 24 bar
	TYPE-AXIALLY SPLIT CASE SINGLE STAGE		SPEED 880 rpm

SHADED REGION ON THE H-Q CURVE REPRESENTS OPTIMUM SELECTION ZONE
 PUMP PERFORMANCE CHARACTERISTICS COMPUTED BASED ON CLEAN COLD WATER S.G 1.0

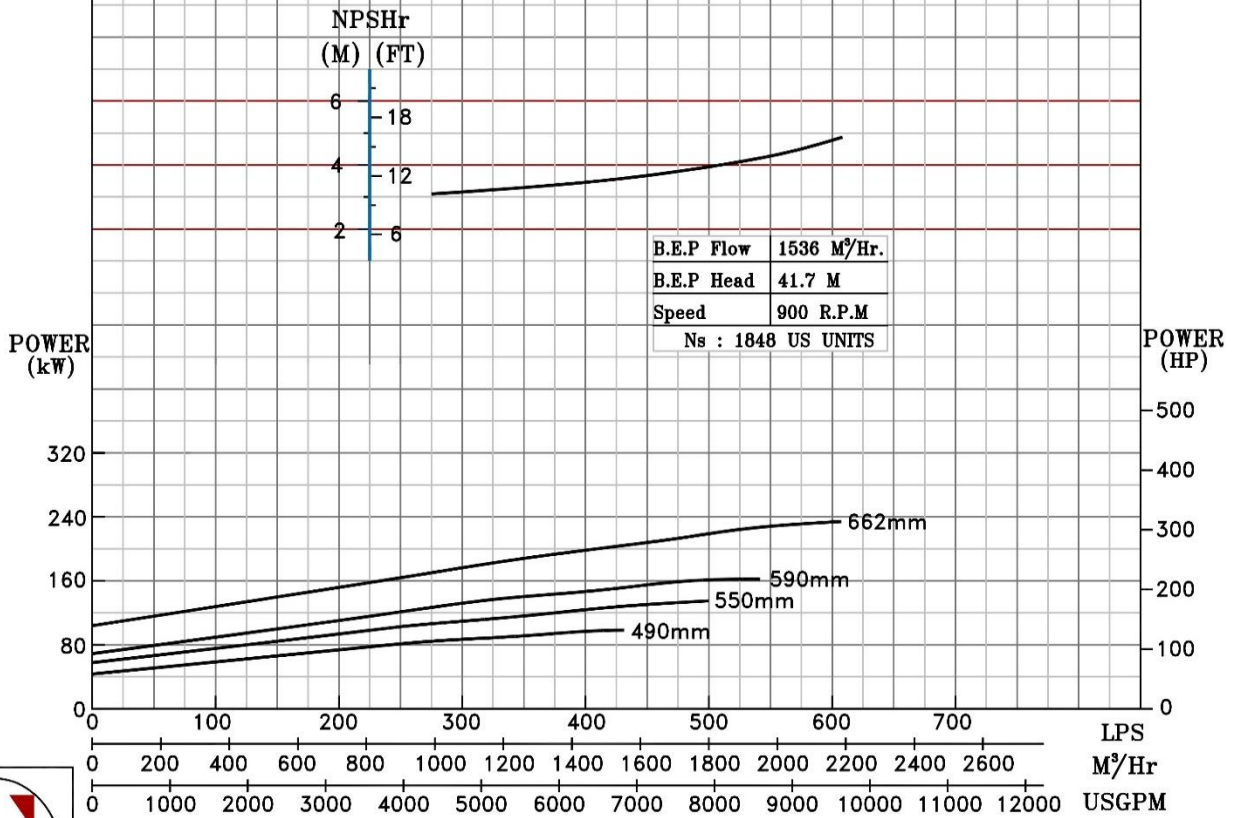
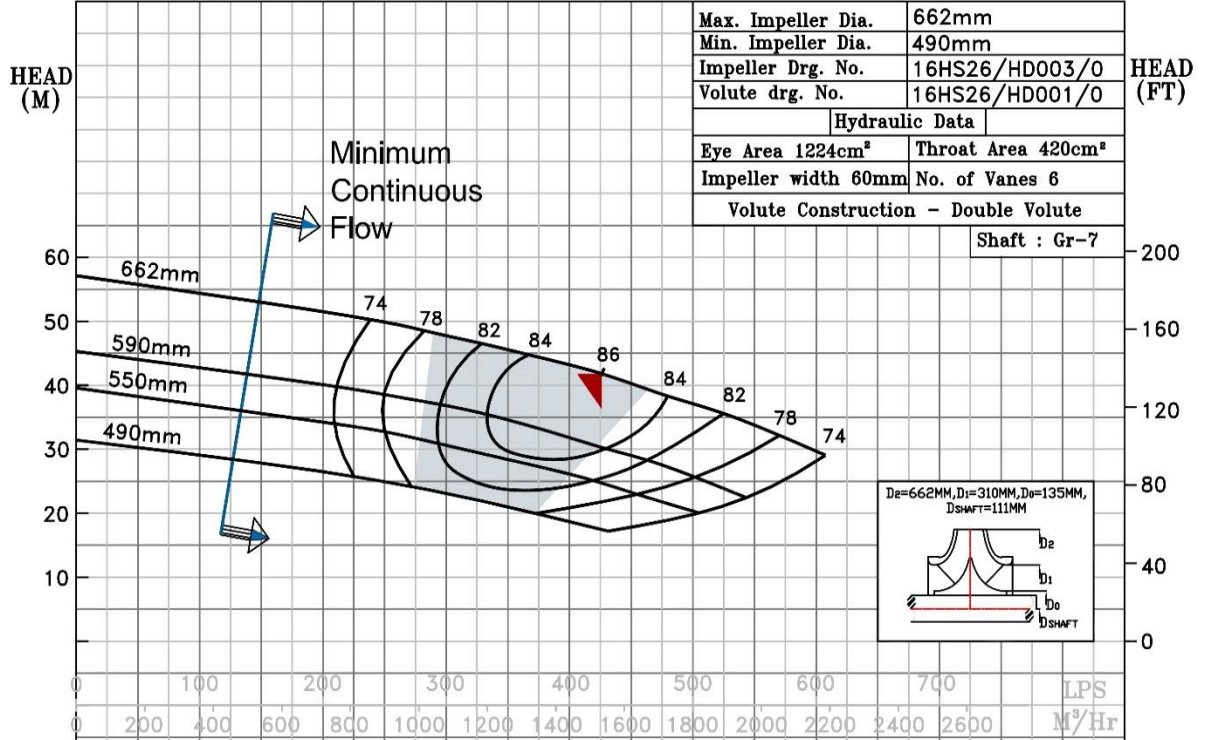


880 RPM

NOTE- PERFORMANCE AS PER ISO 9906 GRADE-2B


PERFORMANCE CURVE OF 16HS26 @900 R.P.M		16HS26/X/105768
 PUMPSENSE <i>HS RANGE</i>	MODEL 16HS26	WORKING PRESS. 16 bar
	SIZE 500x400-662	TEST PRESS. 24 bar
TYPE-AXIALLY SPLIT CASE SINGLE STAGE		SPEED 900 rpm

SHADED REGION ON THE H-Q CURVE REPRESENTS OPTIMUM SELECTION ZONE
 PUMP PERFORMANCE CHARACTERISTICS COMPUTED BASED ON CLEAN COLD WATER S.G 1.0

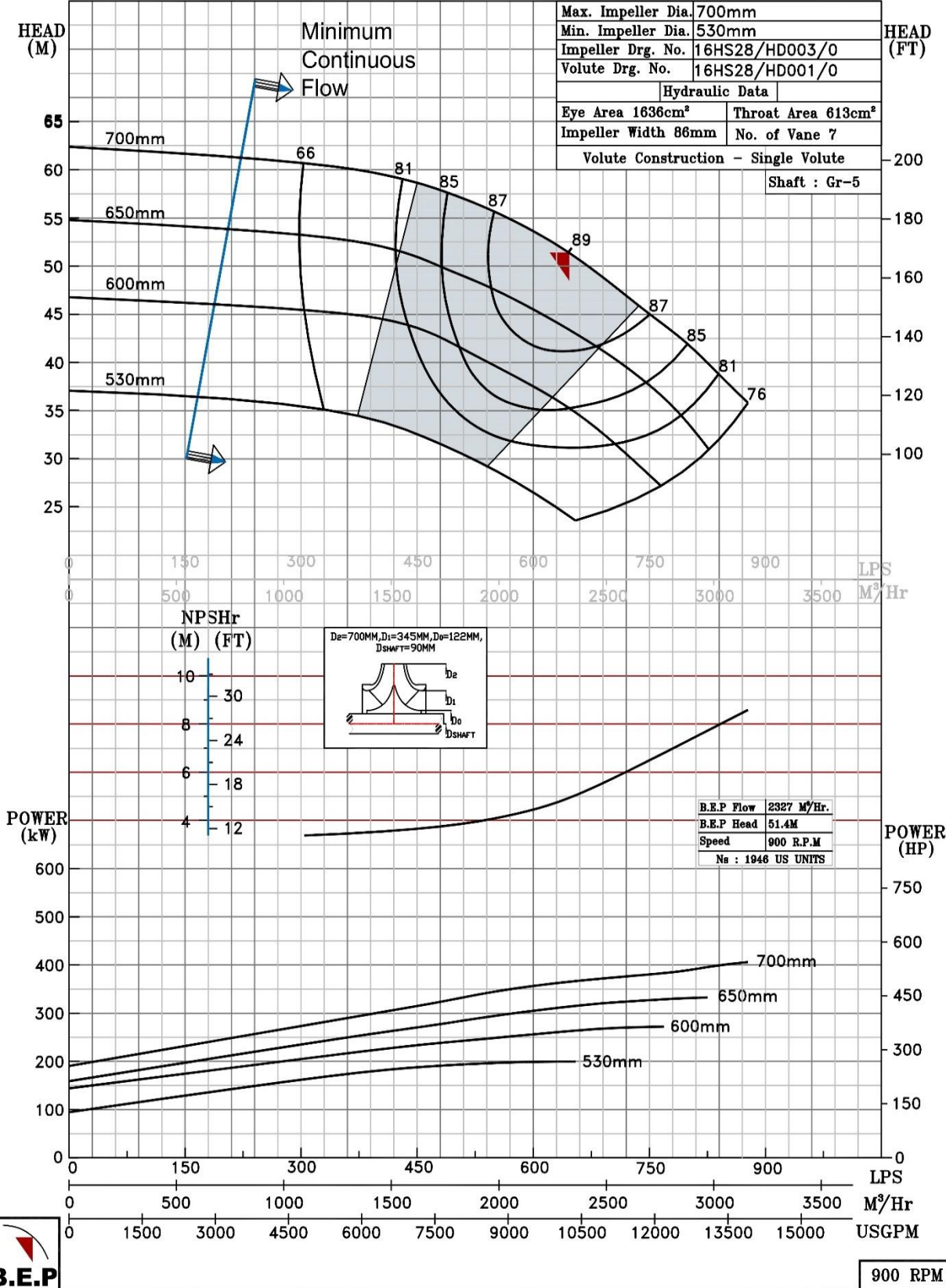


900 RPM

NOTE- PERFORMANCE AS PER ISO 9906 GRADE-2B


PERFORMANCE CURVE OF 16HS28 @900 R.P.M		16HS28/X/105868
 PUMPSENSE <i>HS RANGE</i>	MODEL 16HS28	WORKING PRESS. 16 bar
	SIZE 450x400-700	TEST PRESS. 24 bar
TYPE-AXIALLY SPLIT CASE SINGLE STAGE		SPEED 900 rpm

SHADED REGION ON THE H-Q CURVE REPRESENTS OPTIMUM SELECTION ZONE
 PUMP PERFORMANCE CHARACTERISTICS COMPUTED BASED ON CLEAN COLD WATER S.G 1.0

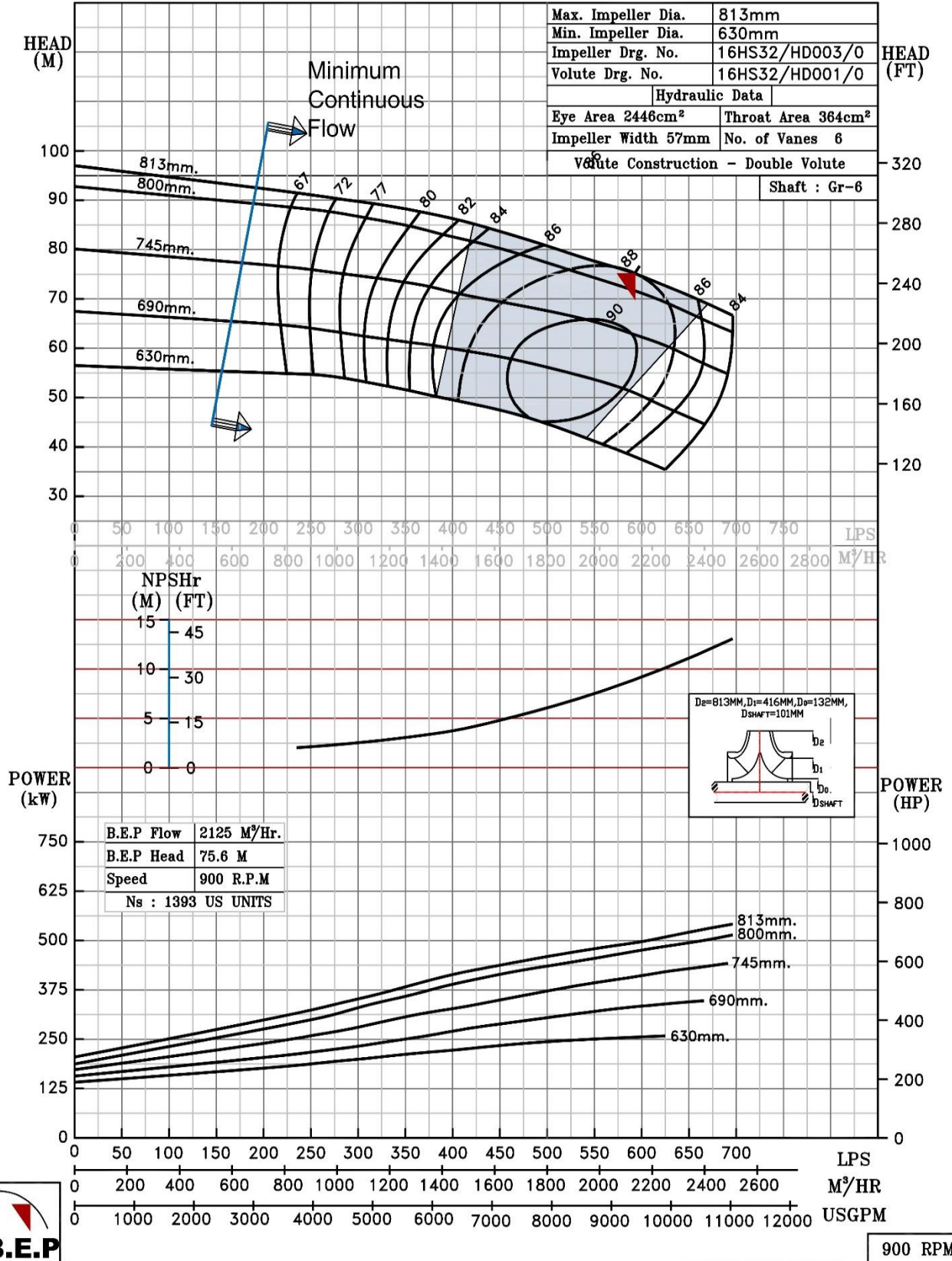


900 RPM


NOTE- PERFORMANCE AS PER ISO 9906 GRADE-2B

PERFORMANCE CURVE OF 16HS32 @900 R.P.M		16HS32/X/105968	
 PUMPSENSE <i>HS RANGE</i>	MODEL	16HS32	WORKING PRESS. 16 bar
	SIZE	500x400-813	TEST PRESS. 24 bar
	TYPE-AXIALLY SPLIT CASE SINGLE STAGE		
	SPEED 900 rpm		

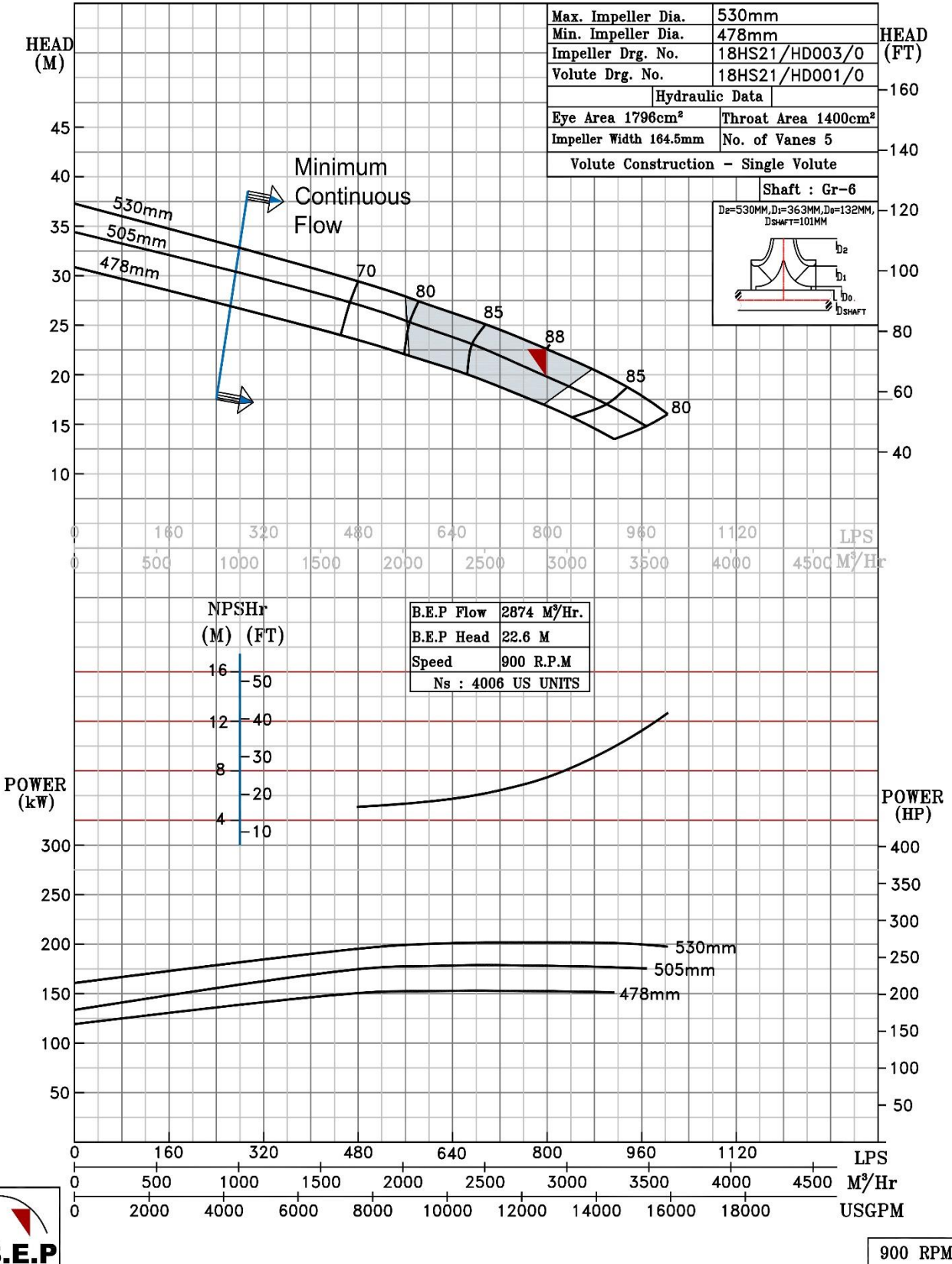
SHADED REGION ON THE H-Q CURVE REPRESENTS OPTIMUM SELECTION ZONE
 PUMP PERFORMANCE CHARACTERISTICS COMPUTED BASED ON CLEAN COLD WATER S.G 1.0




NOTE- PERFORMANCE AS PER ISO 9906 GRADE-2B

PERFORMANCE CURVE OF 18HS21 @900 R.P.M		18HS21/X/106068	
 PUMPSENSE <i>HS RANGE</i>	MODEL 18HS21	WORKING PRESS.	10 bar
	SIZE 500x450-530	TEST PRESS.	15 bar
	TYPE-AXIALLY SPLIT CASE SINGLE STAGE		
			SPEED 900 rpm

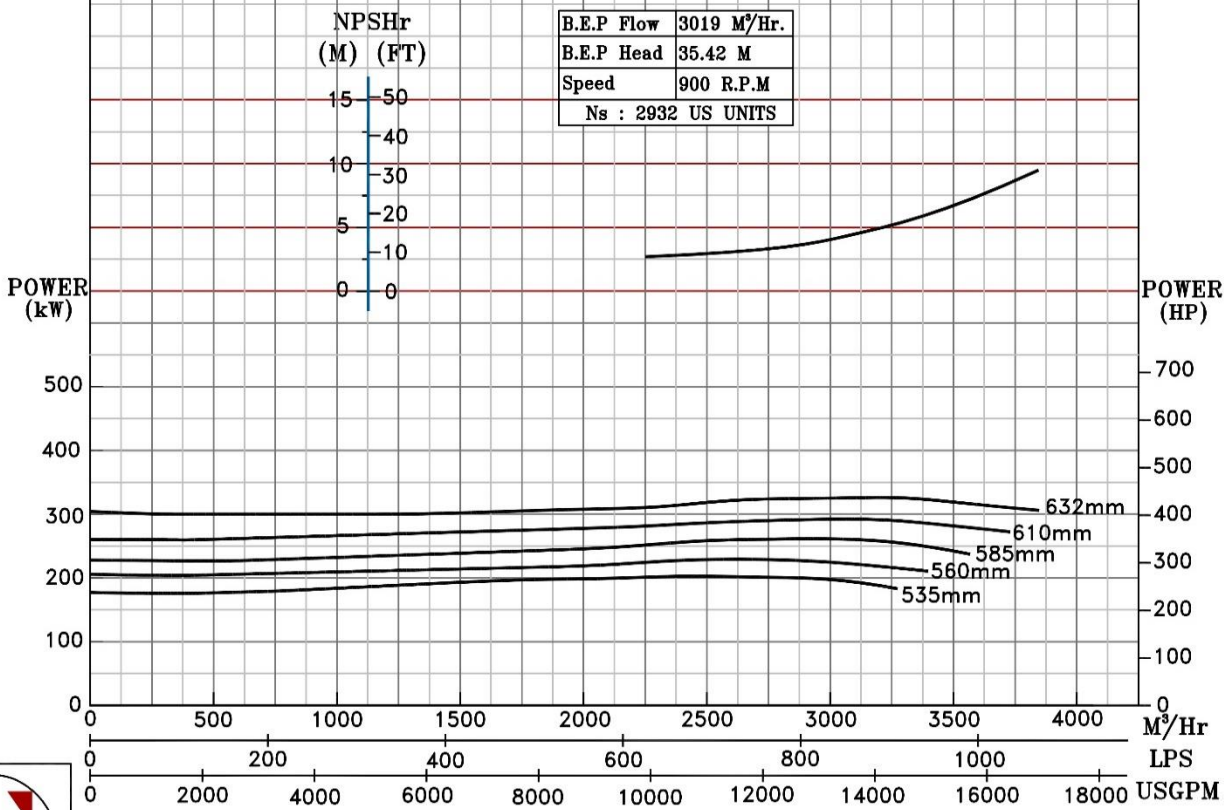
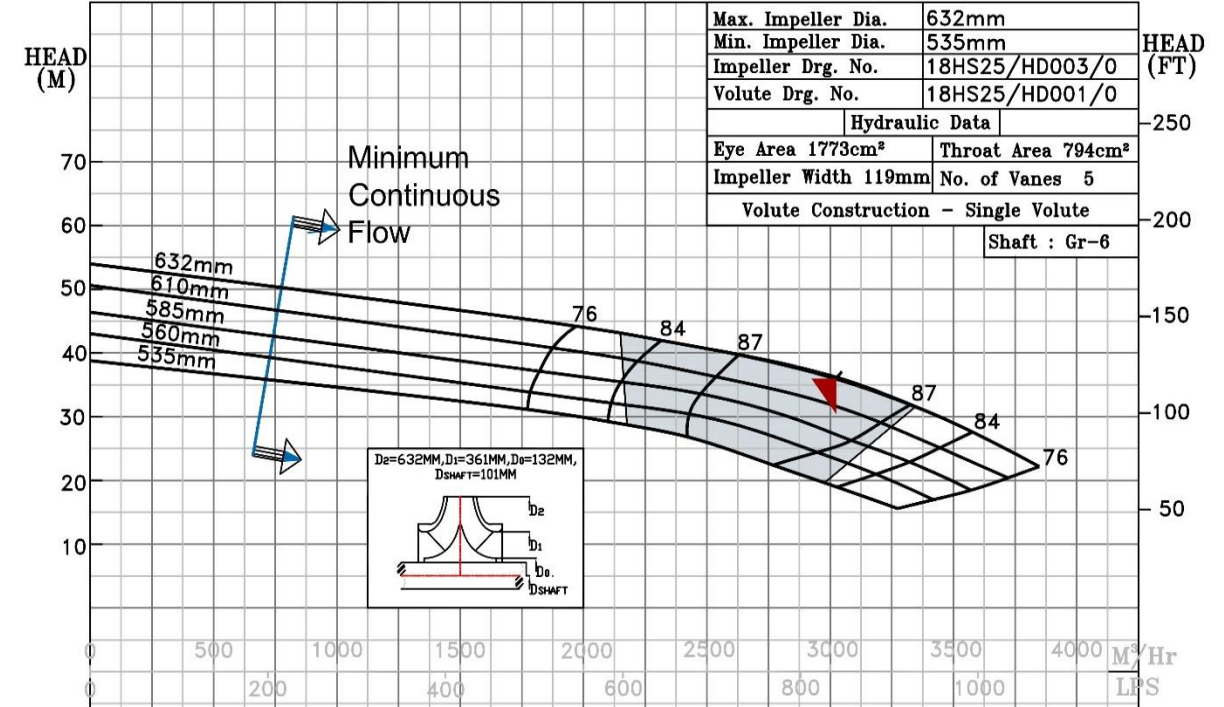
SHADED REGION ON THE H-Q CURVE REPRESENTS OPTIMUM SELECTION ZONE
 PUMP PERFORMANCE CHARACTERISTICS COMPUTED BASED ON CLEAN COLD WATER S.G 1.0



NOTE- PERFORMANCE AS PER ISO 9906 GRADE-2B


PERFORMANCE CURVE OF 18HS25 @900 R.P.M		18HS25/X/106168	
 PUMPSENSE <i>HS RANGE</i>	MODEL 18HS25	WORKING PRESS. 10 bar	
	SIZE 500x450-632	TEST PRESS. 15 bar	
	TYPE-AXIALLY SPLIT CASE SINGLE STAGE		
			SPEED 900 rpm

SHADED REGION ON THE H-Q CURVE REPRESENTS OPTIMUM SELECTION ZONE
 PUMP PERFORMANCE CHARACTERISTICS COMPUTED BASED ON CLEAN COLD WATER S.G 1.0

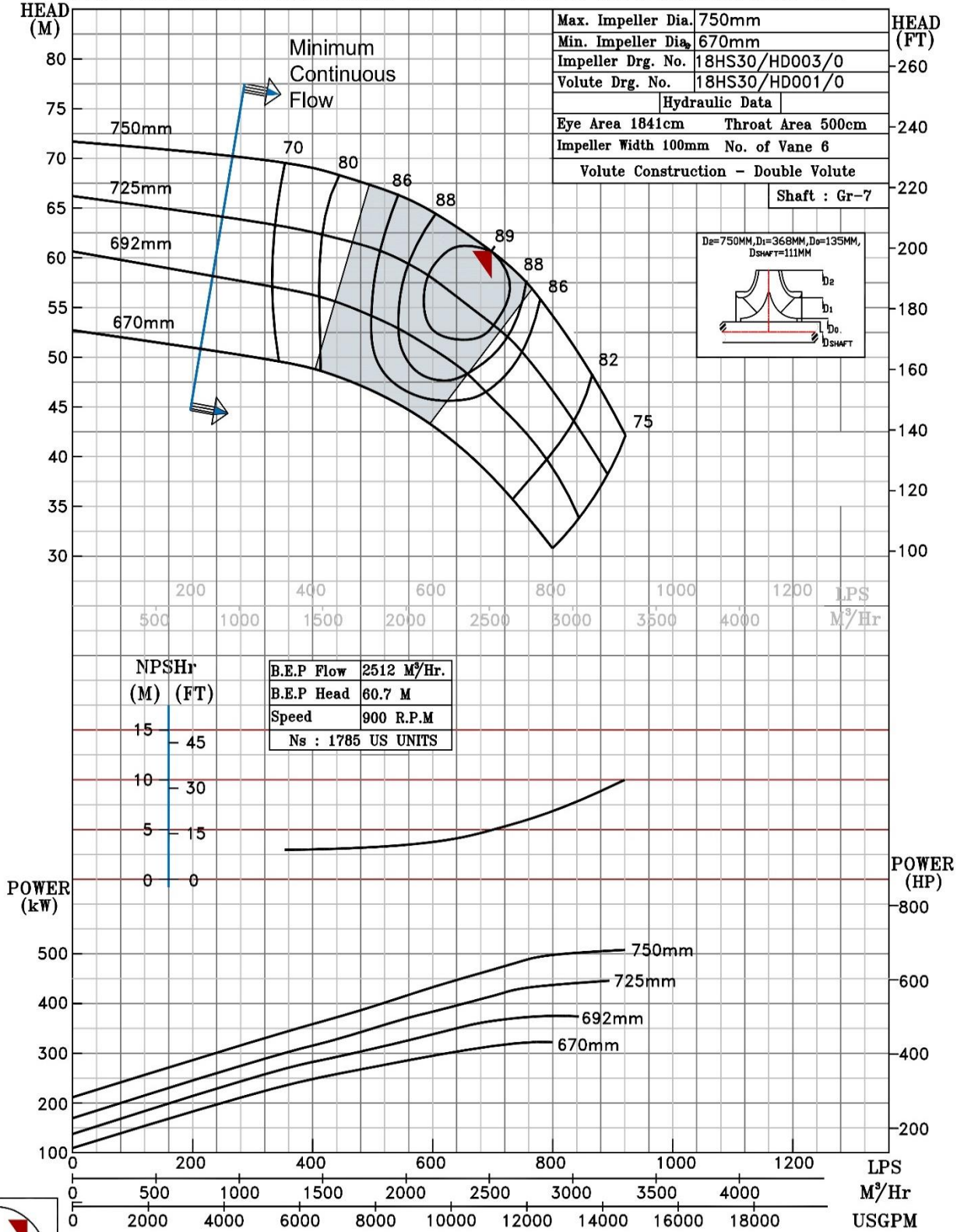


900 RPM

NOTE- PERFORMANCE AS PER ISO 9906 GRADE-2B


PERFORMANCE CURVE OF 18HS30 @900 R.P.M		18HS30/X/106268
 PUMPSENSE <i>HS RANGE</i>	MODEL 18HS30	WORKING PRESS. 10 bar
	SIZE 500x450-750	TEST PRESS. 15 bar
	TYPE-AXIALLY SPLIT CASE SINGLE STAGE	
	SPEED 900 rpm	

SHADED REGION ON THE H-Q CURVE REPRESENTS OPTIMUM SELECTION ZONE
 PUMP PERFORMANCE CHARACTERISTICS COMPUTED BASED ON CLEAN COLD WATER S.G 1.0

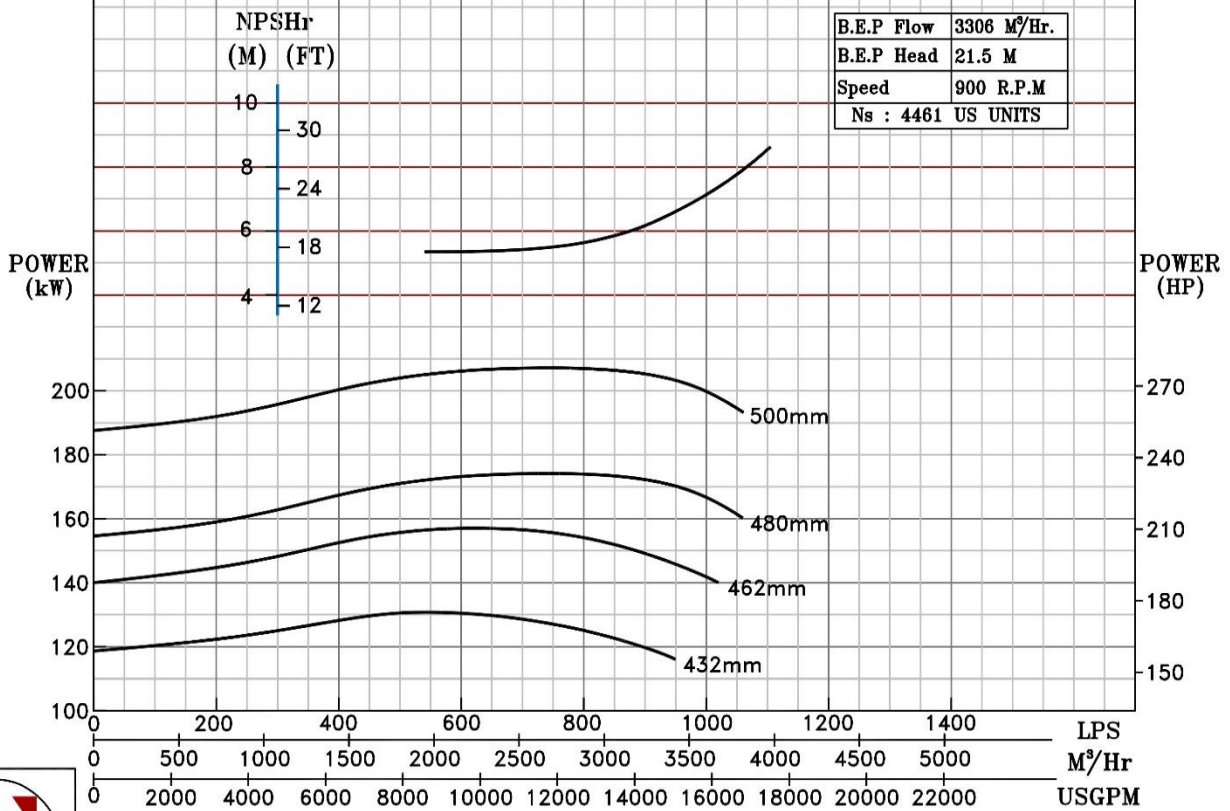
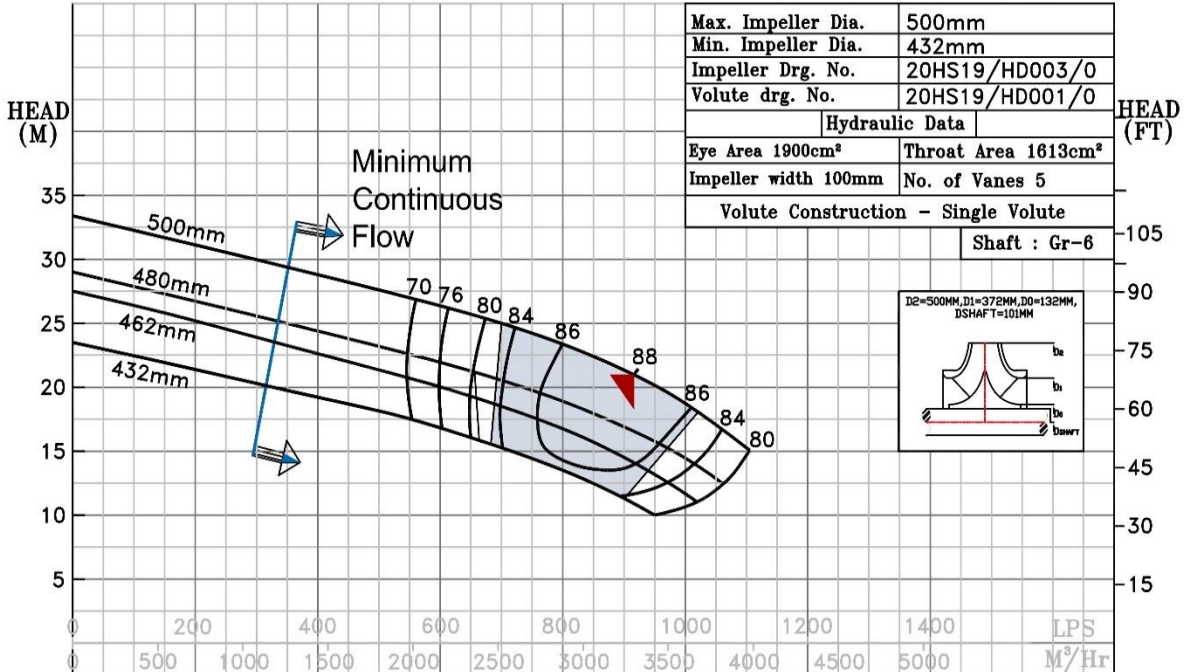


900 RPM

NOTE- PERFORMANCE AS PER ISO 9906 GRADE-2B


PERFORMANCE CURVE OF 20HS19 @900 R.P.M		20HS19/X/106368	
 PUMPSENSE <i>HS RANGE</i>	MODEL 20HS19	WORKING PRESS.	10 bar
	SIZE 600x500-480	TEST PRESS.	15 bar
	TYPE-AXIALLY SPLIT CASE SINGLE STAGE		
	SPEED 900 rpm		

SHADED REGION ON THE H-Q CURVE REPRESENTS OPTIMUM SELECTION ZONE
 PUMP PERFORMANCE CHARACTERISTICS COMPUTED BASED ON CLEAN COLD WATER S.G 1.0

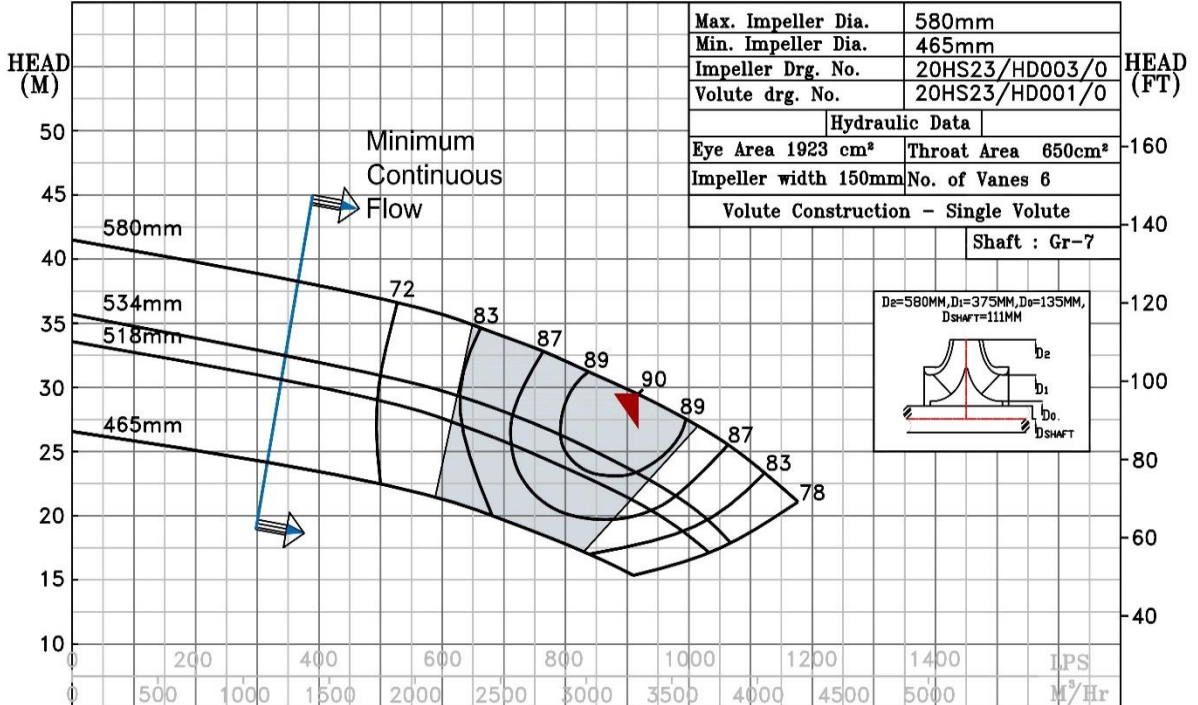


900 RPM

NOTE- PERFORMANCE AS PER ISO 9906 GRADE-2B

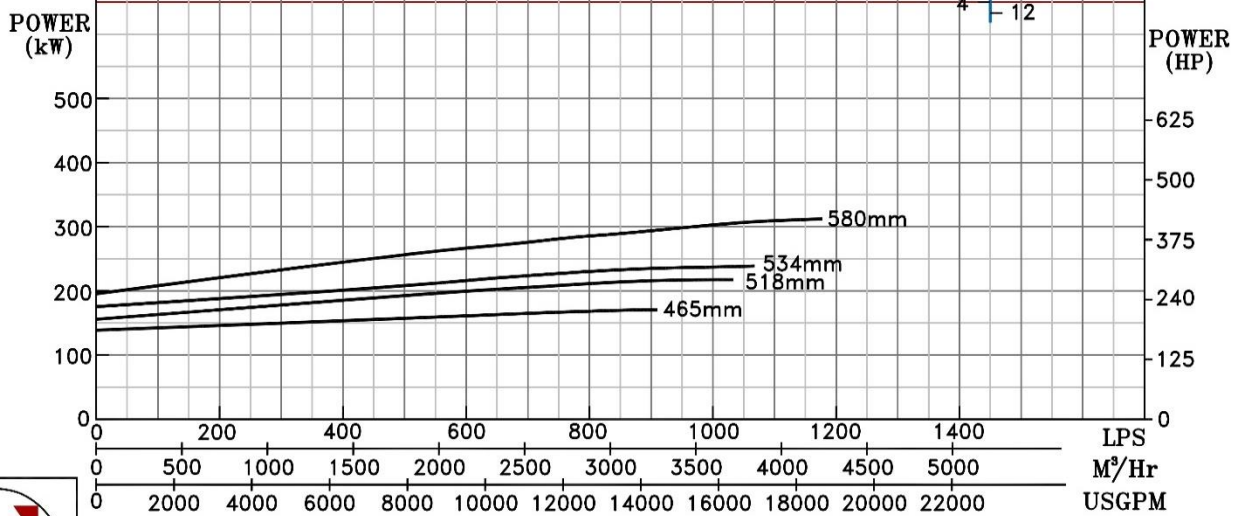
PERFORMANCE CURVE OF 20HS23 @900 R.P.M		20HS23/X/106468
 PUMPSENSE <i>HS RANGE</i>	MODEL 20HS23	WORKING PRESS. 10 bar
	SIZE 600x500-580	TEST PRESS. 15 bar
	TYPE-AXIALLY SPLIT CASE SINGLE STAGE	
	SPEED 900 rpm	

SHADED REGION ON THE H-Q CURVE REPRESENTS OPTIMUM SELECTION ZONE
 PUMP PERFORMANCE CHARACTERISTICS COMPUTED BASED ON CLEAN COLD WATER S.G 1.0




B.E.P Flow	3306 M ³ /Hr.
B.E.P Head	29.5 M
Speed	900 R.P.M
Ns : 3519 US UNITS	

NPSHr	
(M)	(FT)
10	30
8	24
6	18
4	12

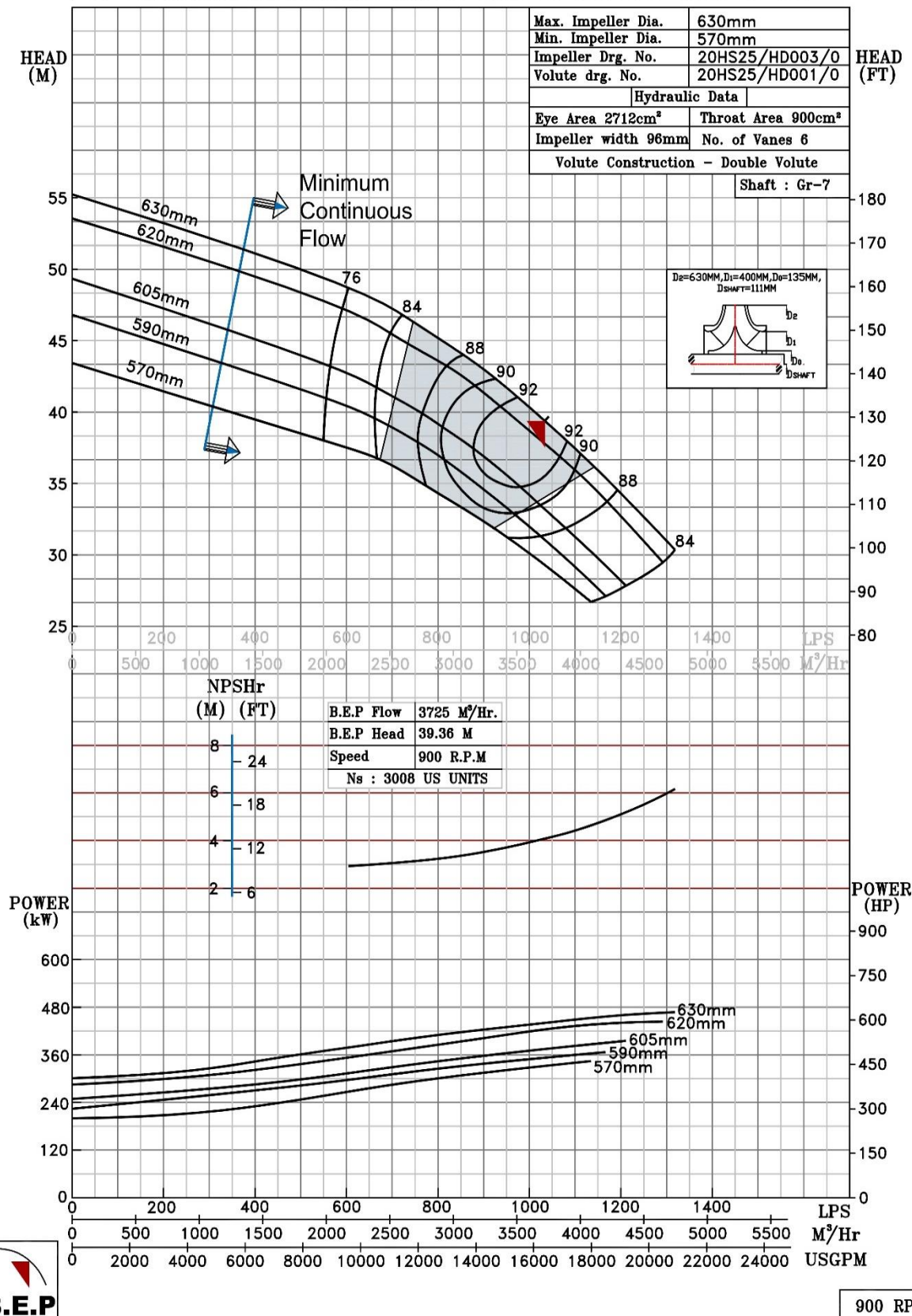


900 RPM

NOTE- PERFORMANCE AS PER ISO 9906 GRADE-2B


PERFORMANCE CURVE OF 20HS25 @ 900 R.P.M		20HS25/X/106568
 PUMPSENSE <i>HS RANGE</i>	MODEL 20HS25	WORKING PRESS. 10 bar
	SIZE 600x500-630	TEST PRESS. 15 bar
	TYPE-AXIALLY SPLIT CASE SINGLE STAGE	
	SPEED 900 rpm	

SHADED REGION ON THE H-Q CURVE REPRESENTS OPTIMUM SELECTION ZONE
 PUMP PERFORMANCE CHARACTERISTICS COMPUTED BASED ON CLEAN COLD WATER S.G 1.0

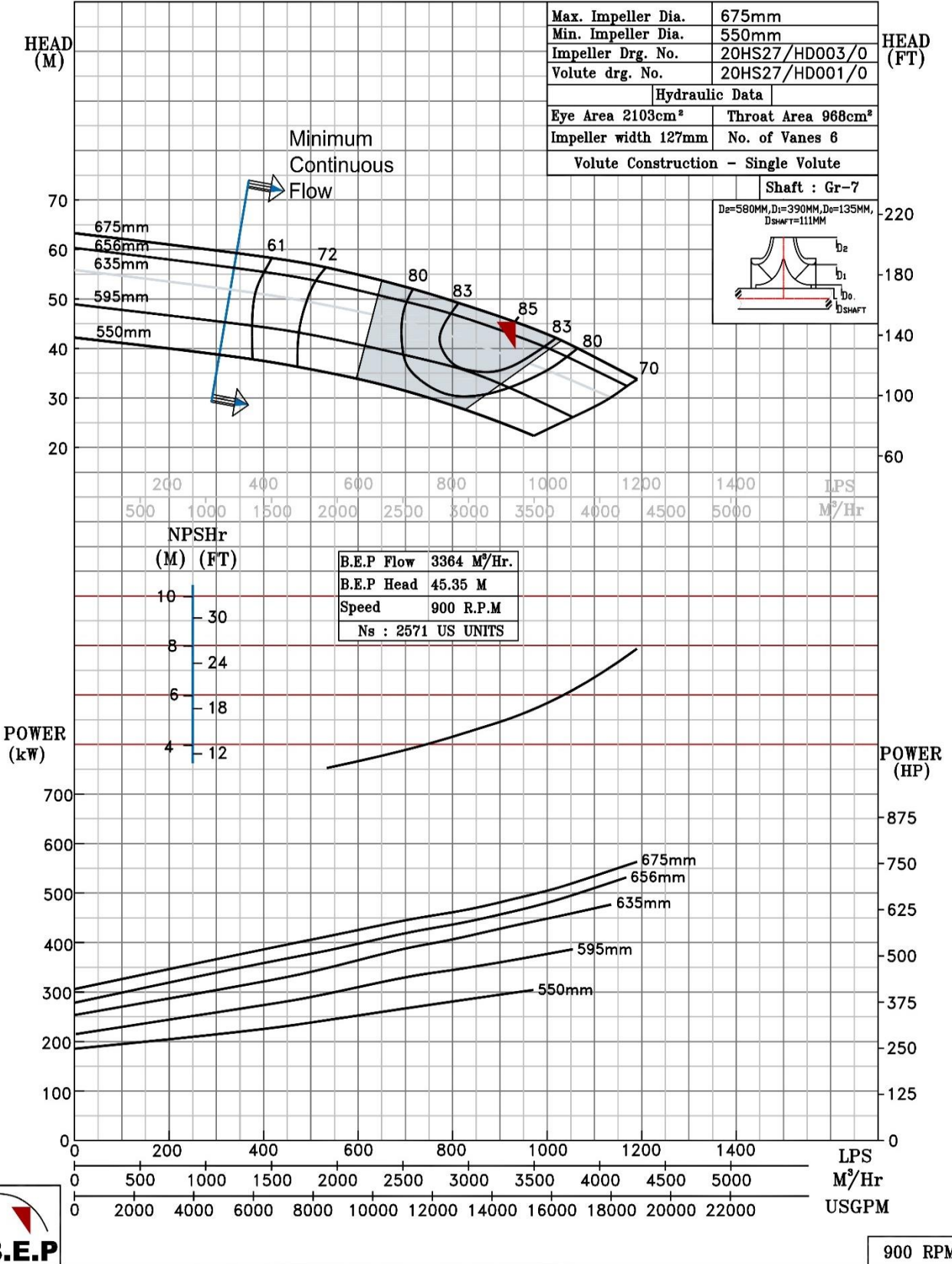


900 RPM


NOTE- PERFORMANCE AS PER ISO 9906 GRADE-2B

PERFORMANCE CURVE OF 20HS27 @900 R.P.M		20HS27/X/106668	
 PUMPSENSE <i>HS RANGE</i>	MODEL 20HS27	WORKING PRESS.	10 bar
	SIZE 600x500-675	TEST PRESS.	15 bar
	TYPE-AXIALLY SPLIT CASE SINGLE STAGE		
	SPEED 900 rpm		

SHADED REGION ON THE H-Q CURVE REPRESENTS OPTIMUM SELECTION ZONE
 PUMP PERFORMANCE CHARACTERISTICS COMPUTED BASED ON CLEAN COLD WATER S.G 1.0



NOTE- PERFORMANCE AS PER ISO 9906 GRADE-2B

PERFORMANCE CURVE OF 20HS31 @900 R.P.M		20HS31/X/106768	
 PUMPSENSE <i>HS RANGE</i>	MODEL 20HS31	WORKING PRESS. 16 bar	
	SIZE 600x500-780	TEST PRESS. 24 bar	
	TYPE-AXIALLY SPLIT CASE SINGLE STAGE		SPEED 900 rpm

SHADED REGION ON THE H-Q CURVE REPRESENTS OPTIMUM SELECTION ZONE

PUMP PERFORMANCE CHARACTERISTICS COMPUTED BASED ON CLEAN COLD WATER S.G 1.0

