
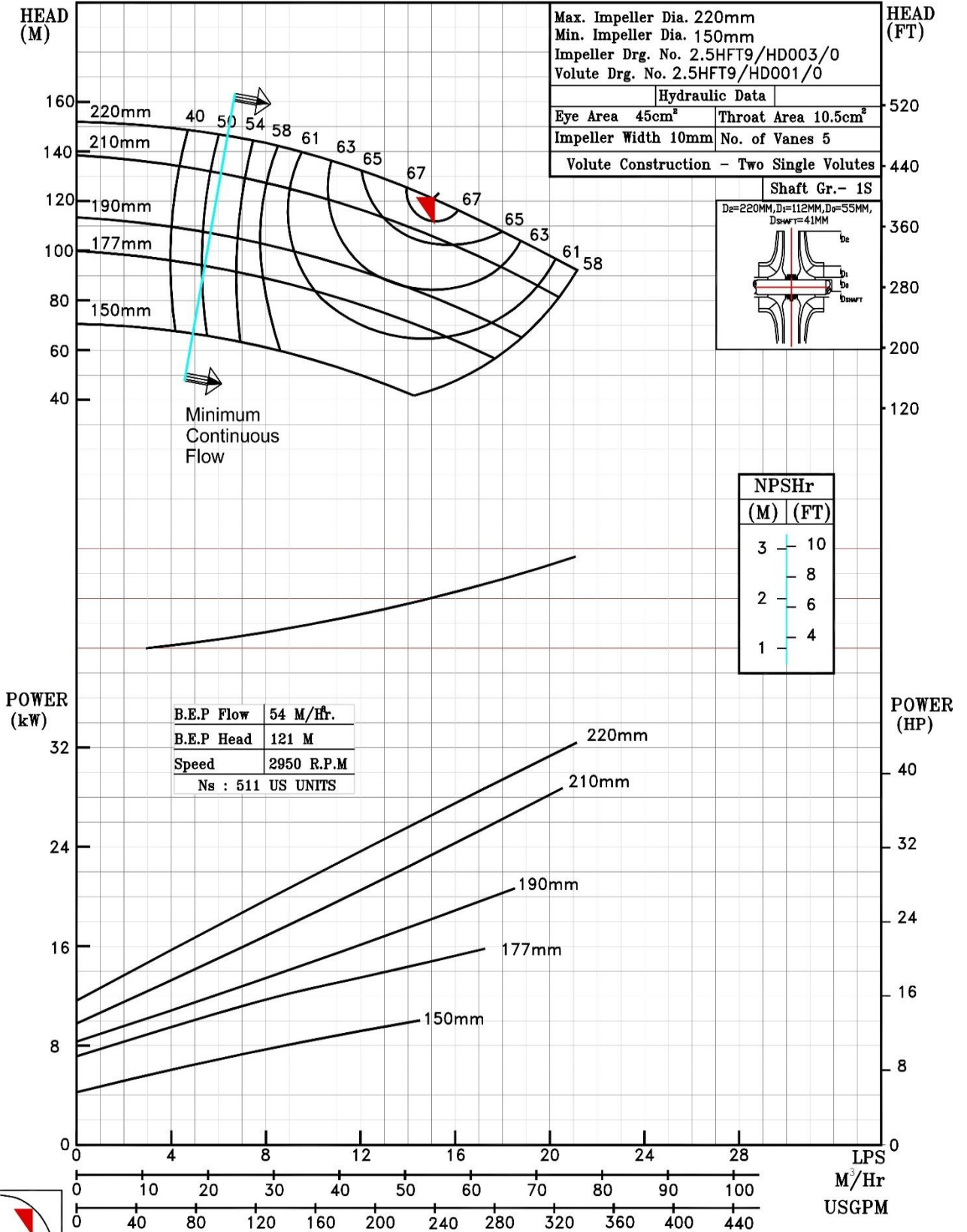


NOTE- PERFORMANCE AS PER ISO 9906 GRADE-2B


PERFORMANCE CURVE OF 2.5HFT9 @2950 R.P.M		2.5HFT9/X/900152
 PUMPSENSE <i>HFT RANGE</i>	MODEL 2.5HFT9	WORKING PRESS. 16 bar
	SIZE 80x65-220	TEST PRESS. 24 bar
RATED CAPACITY - 130 USGPM		TYPE-AXIALLY SPLIT CASE TWO STAGE
		SPEED 2950 rpm

PUMP PERFORMANCE CHARACTERISTICS COMPUTED BASED ON CLEAN COLD WATER S.G 1.0

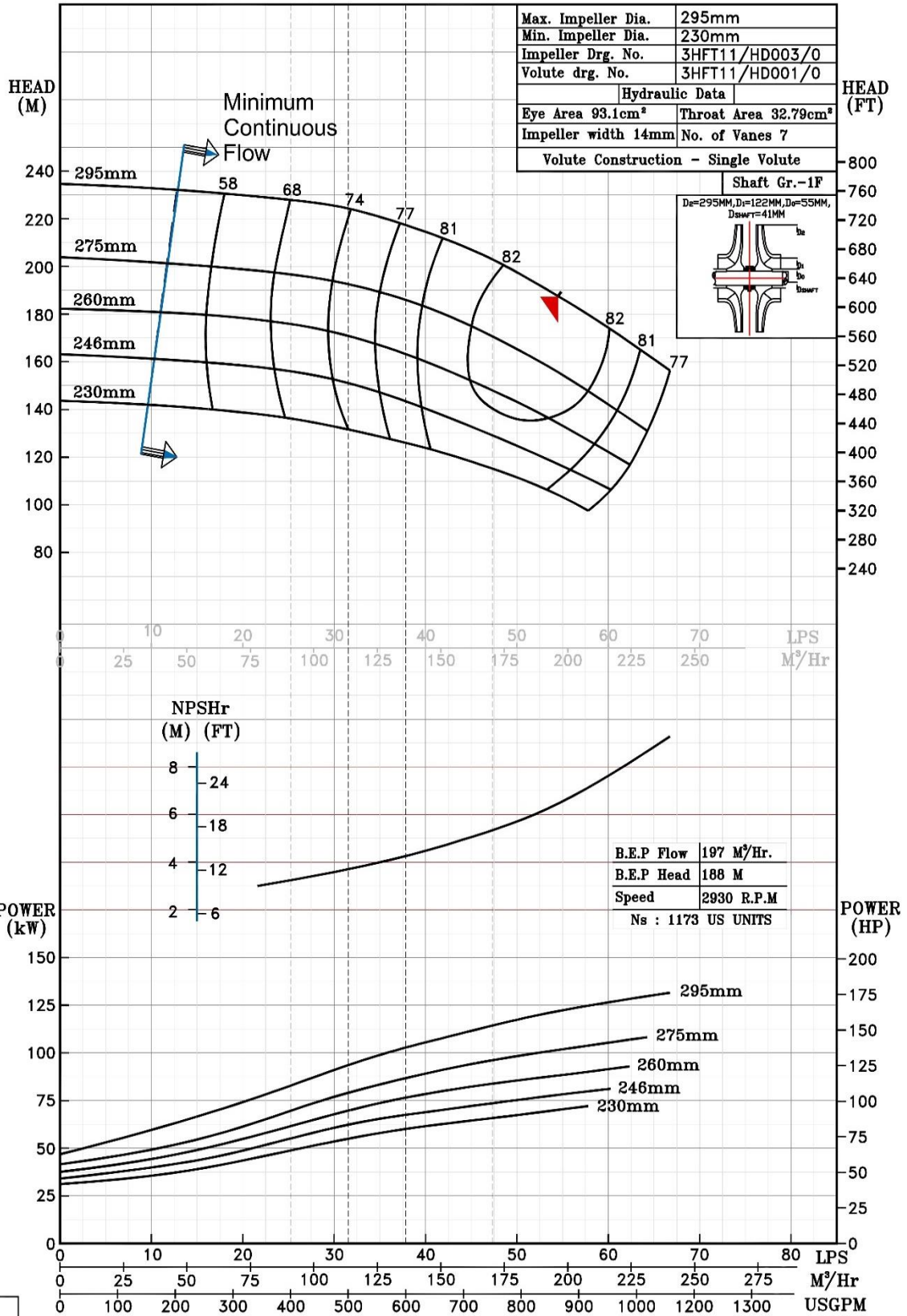


2950 RPM

NOTE- PERFORMANCE AS PER ISO 9906 GRADE-2B

PERFORMANCE CURVE OF 3HFT11 @2930 R.P.M		3HFT11/Y/910252
 PUMPSENSE <i>HFT RANGE</i>	MODEL 3HFT11	WORKING PRESS. 350 PSI
	SIZE 100x80-295	TEST PRESS. 520 PSI
TYPE-AXIALLY SPLIT CASE TWO STAGE		SPEED 2930rpm
RATED CAPACITY - 400 & 500 USGPM		DATE - 23.02.19

PUMP PERFORMANCE CHARACTERISTICS COMPUTED BASED ON CLEAN COLD WATER S.G 1.0



2930 RPM

NOTE- PERFORMANCE AS PER ISO 9906 GRADE-2B

PERFORMANCE CURVE OF 3HFTD14 @2970 R.P.M

3HFTD14/Y/900452



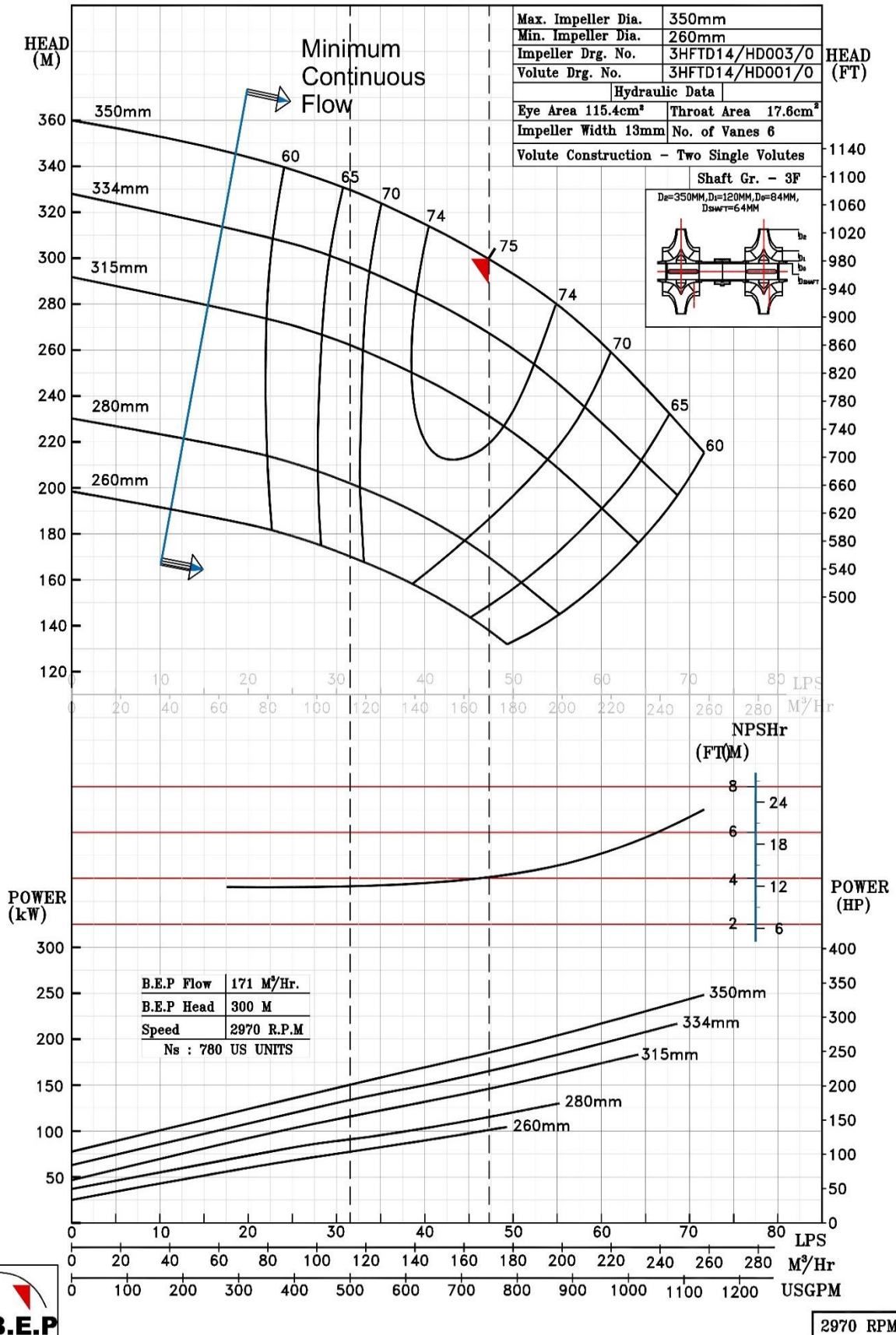
PUMPSENSE

HFT RANGE

MODEL 3HFTD14	WORKING PRESS.	36 bar
SIZE 125x80-350	TEST PRESS.	54 bar
TYPE-AXIALLY SPLIT CASE SINGLE STAGE		SPEED 2970 rpm


RATED CAPACITY - 500 USGPM

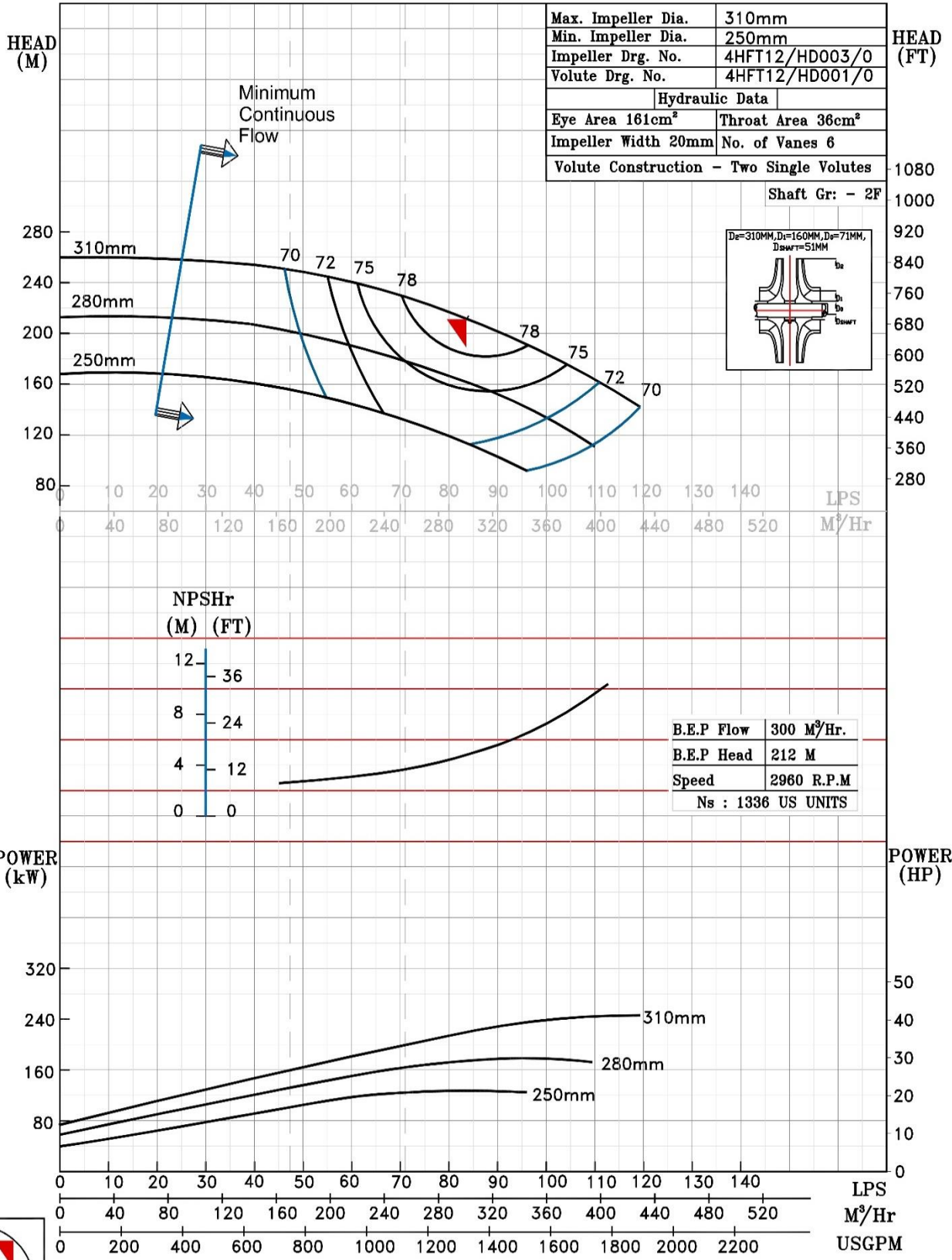
PUMP PERFORMANCE CHARACTERISTICS COMPUTED BASED ON CLEAN COLD WATER S.G 1.0



2970 RPM


NOTE- PERFORMANCE AS PER ISO 9906 GRADE-2B

PERFORMANCE CURVE OF 4HFT12 @2960 R.P.M		4HFT12/X/910852		
	PUMPSENSE		MODEL 4HFT12	WORKING PRESS. 30 bar
			SIZE 125x100-310	TEST PRESS. 45 bar
<i>HFT RANGE</i>		TYPE-AXIALLY SPLIT CASE TWO STAGE		
		SPEED 2960 rpm		
RATED CAPACITY - 750 USGPM				



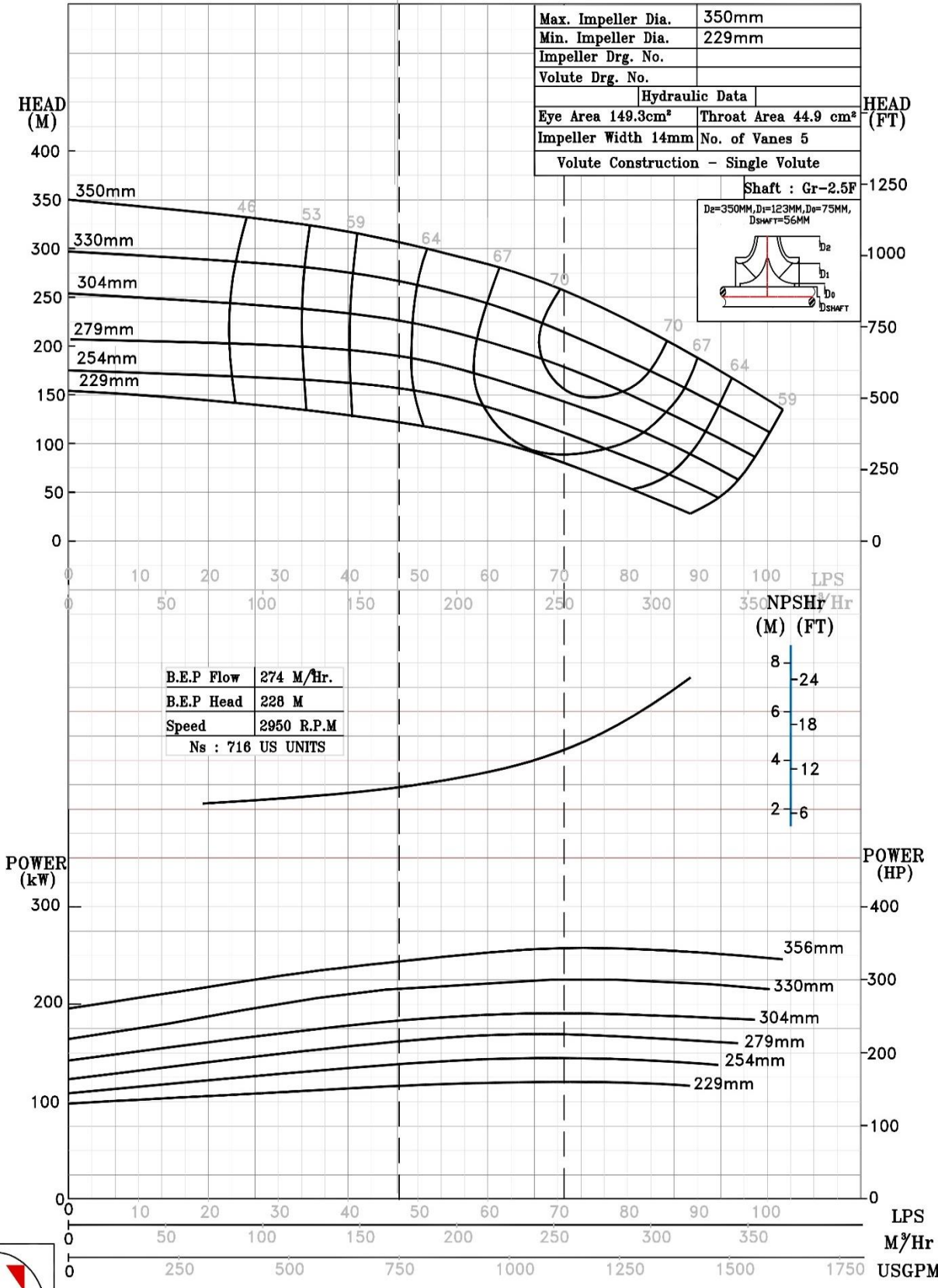
2960 RPM

NOTE- PERFORMANCE AS PER ISO 9906 GRADE-2B

PERFORMANCE CURVE OF 4HFTD13 @2950 R.P.M		4HFTD13/X/0111	
 PUMPSENSE <i>HFT RANGE</i>	MODEL 4HFTD13	WORKING PRESS.	40 bar
	SIZE 150x100-350	TEST PRESS.	60 bar
	TYPE-AXIALLY SPLIT CASE TWO STAGE		SPEED 2950 rpm


RATED CAPACITY - 750 USGPM

PUMP PERFORMANCE CHARACTERISTICS COMPUTED BASED ON CLEAN COLD WATER S.G 1.0

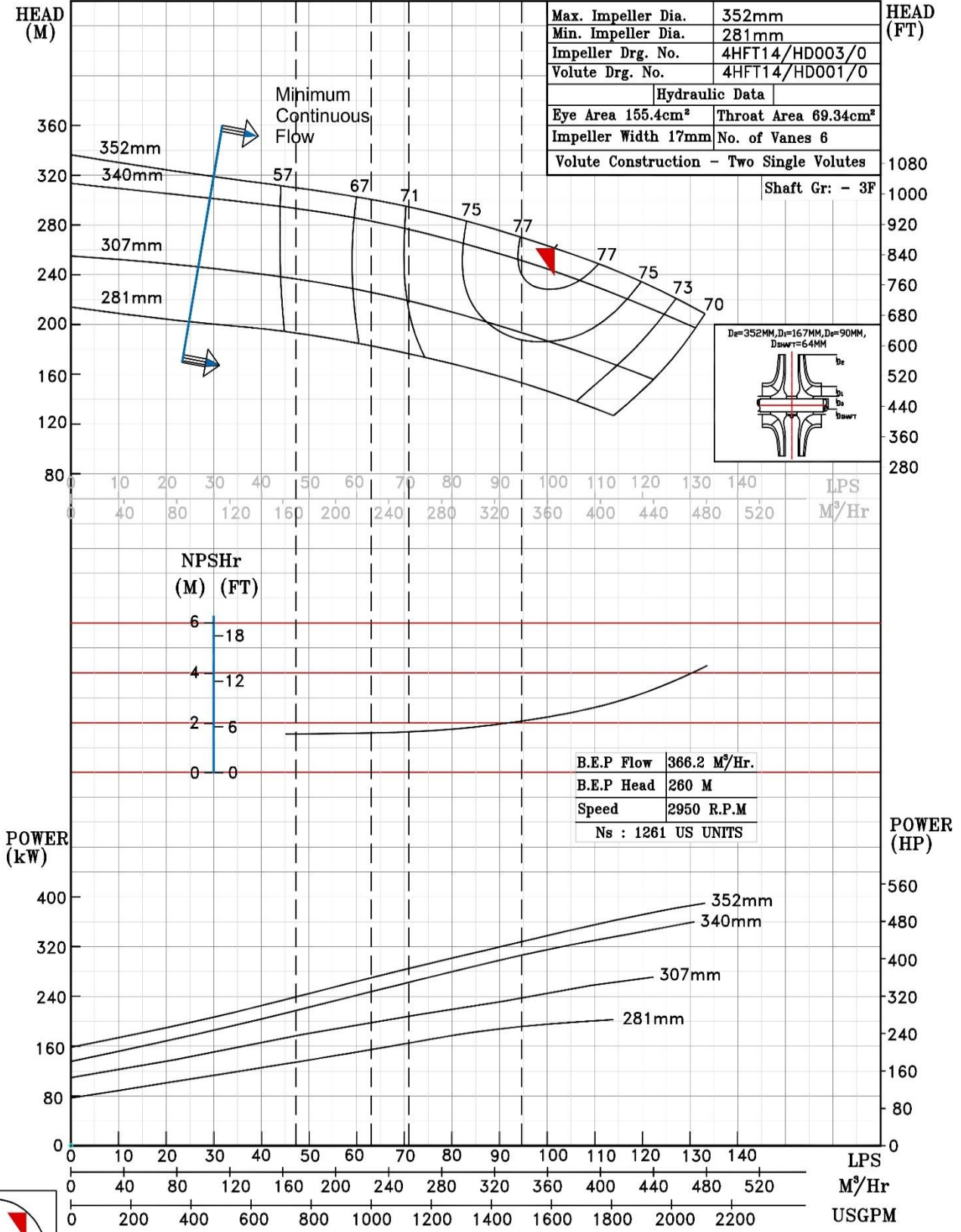


2950 RPM

NOTE- PERFORMANCE AS PER ISO 9906 GRADE-2B

PERFORMANCE CURVE OF 4HFT14 @2950 R.P.M		4HFT14/X/900552	
	PUMPSENSE	MODEL 4HFT14	WORKING PRESS. 36 bar
		SIZE 150x100-352	TEST PRESS. 54 bar
<i>HFT RANGE</i>		TYPE-AXIALLY SPLIT CASE TWO STAGE	
RATED CAPACITY - 750,1000 USGPM		SPEED 2950 rpm	

PUMP PERFORMANCE CHARACTERISTICS COMPUTED BASED ON CLEAN COLD WATER S.G 1.0



2950 RPM

NOTE- PERFORMANCE AS PER ISO 9906 GRADE-2B

PERFORMANCE CURVE OF 6HFTD13 @2930 R.P.M

6HFTD13/Y/910752



PUMPSENSE

HFT RANGE

MODEL 6HFTD13

WORKING PRESS. 36 bar

SIZE 200x150-334

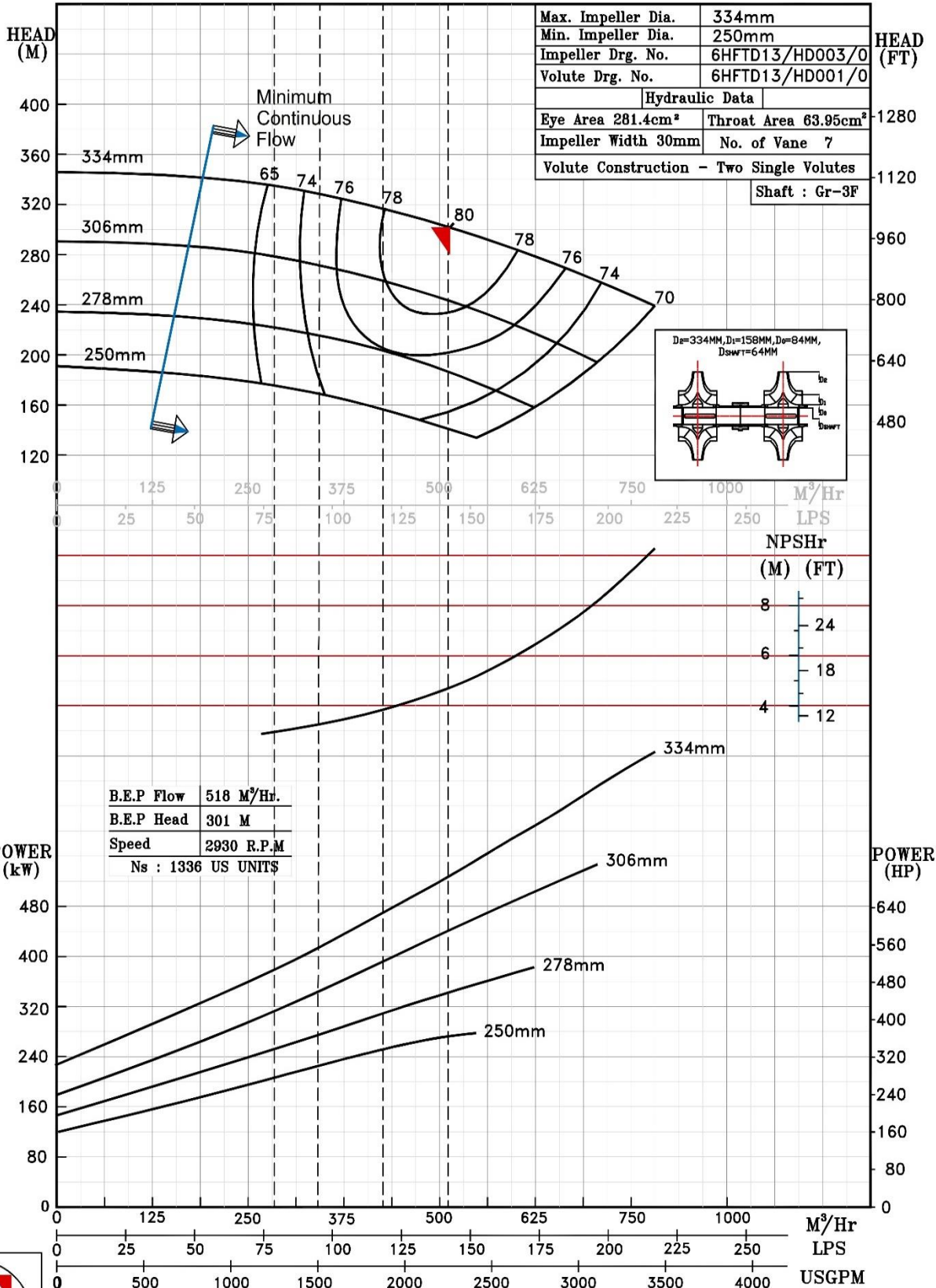
TEST PRESS. 45 bar

TYPE-AXIALLY SPLIT CASE TWO STAGE

SPEED 2930 rpm


RATED CAPACITY - 1250,1500 USGPM

PUMP PERFORMANCE CHARACTERISTICS COMPUTED BASED ON CLEAN COLD WATER S.G 1.0



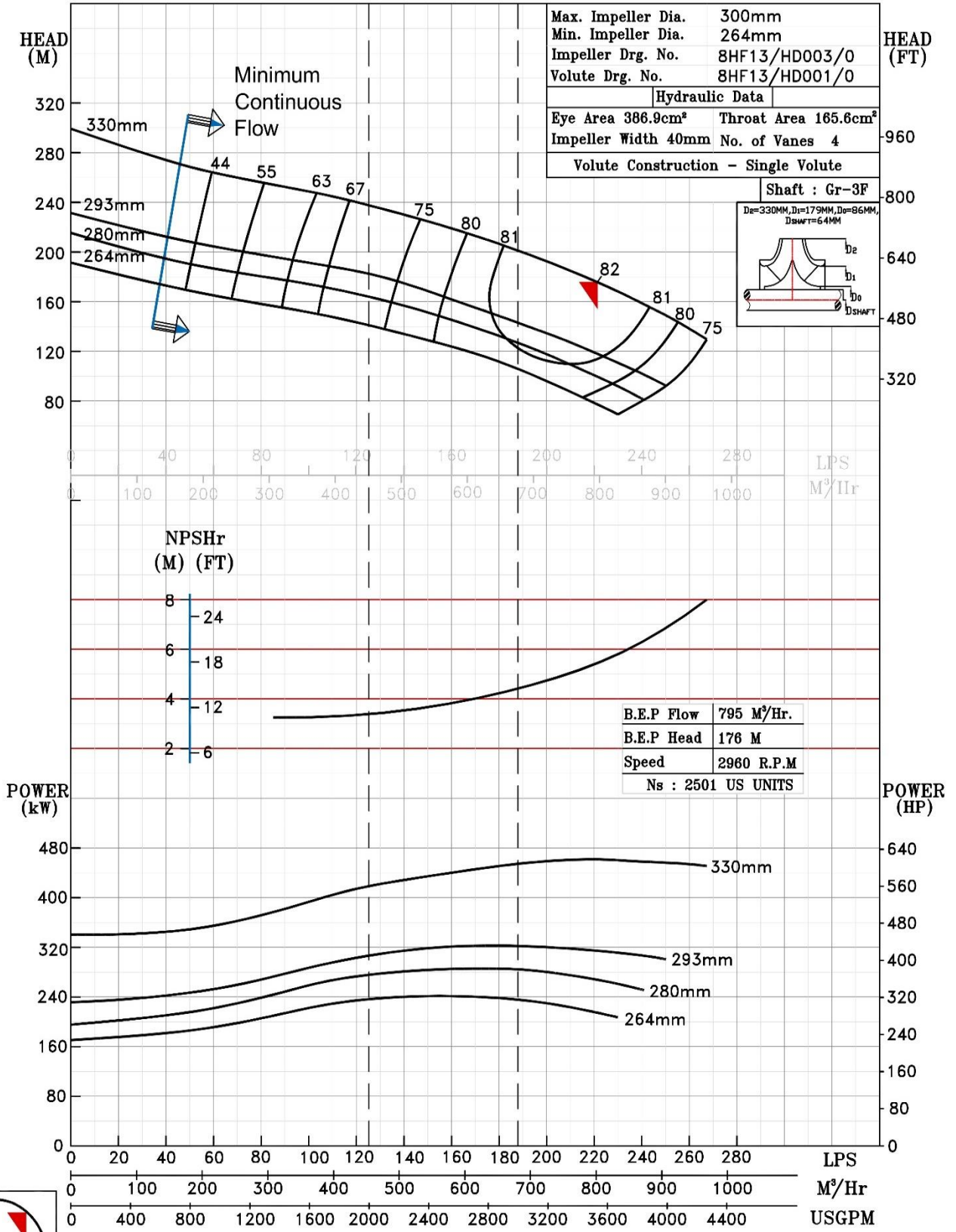
2930 RPM

NOTE- PERFORMANCE AS PER ISO 9906 GRADE-2B

PERFORMANCE CURVE OF 6HFTD12S @2960 R.P.M		6HFTD12S/Y/901252	
	PUMPSENSE		MODEL 6HFTD12S
			WORKING PRESS. 36 bar
	HFT RANGE		TEST PRESS. 54 bar
	TYPE-AXIALLY SPLIT CASE SINGLE STAGE		SPEED 2960 rpm


RATED CAPACITY - 2000 USGPM

PUMP PERFORMANCE CHARACTERISTICS COMPUTED BASED ON CLEAN COLD WATER S.G 1.0

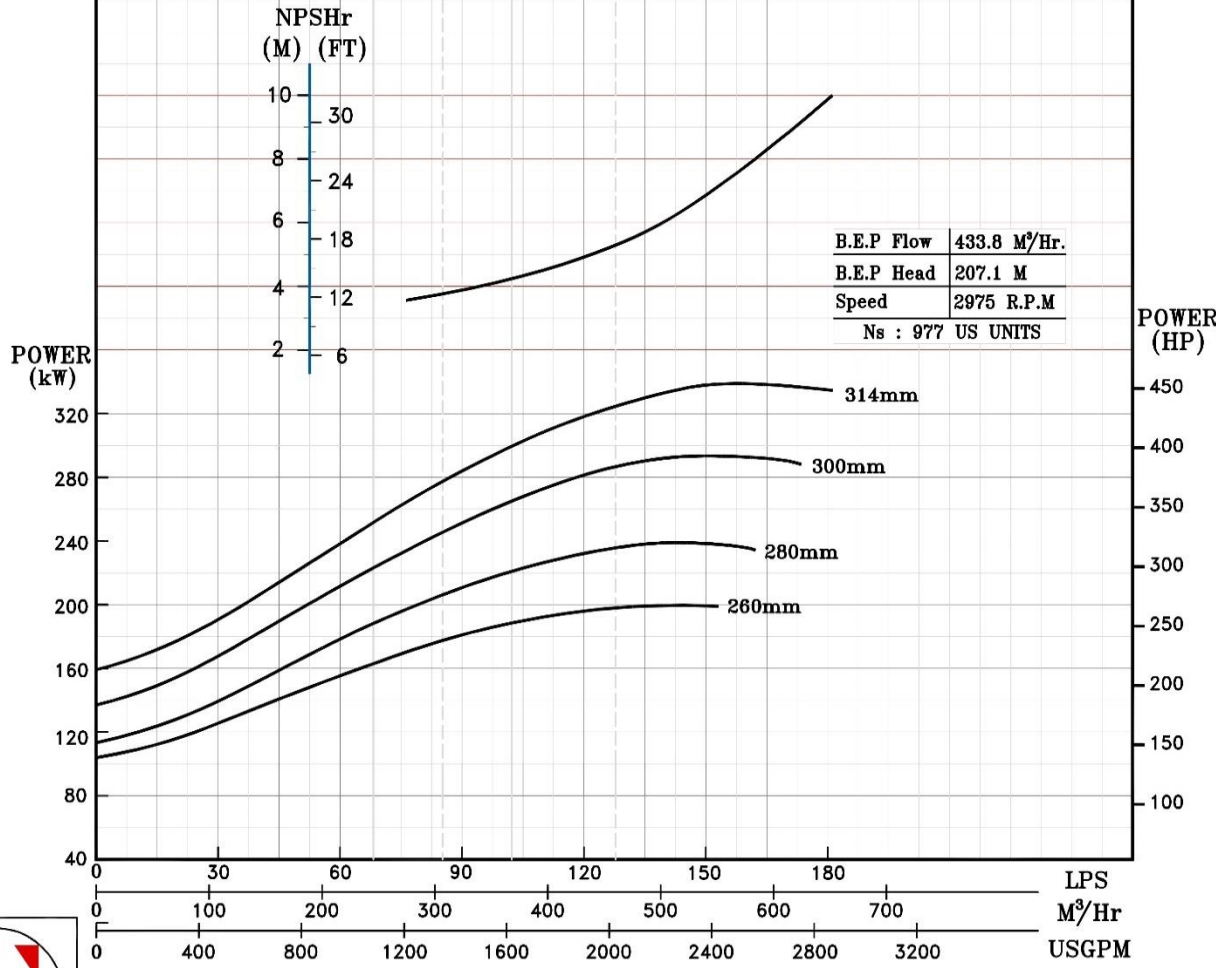
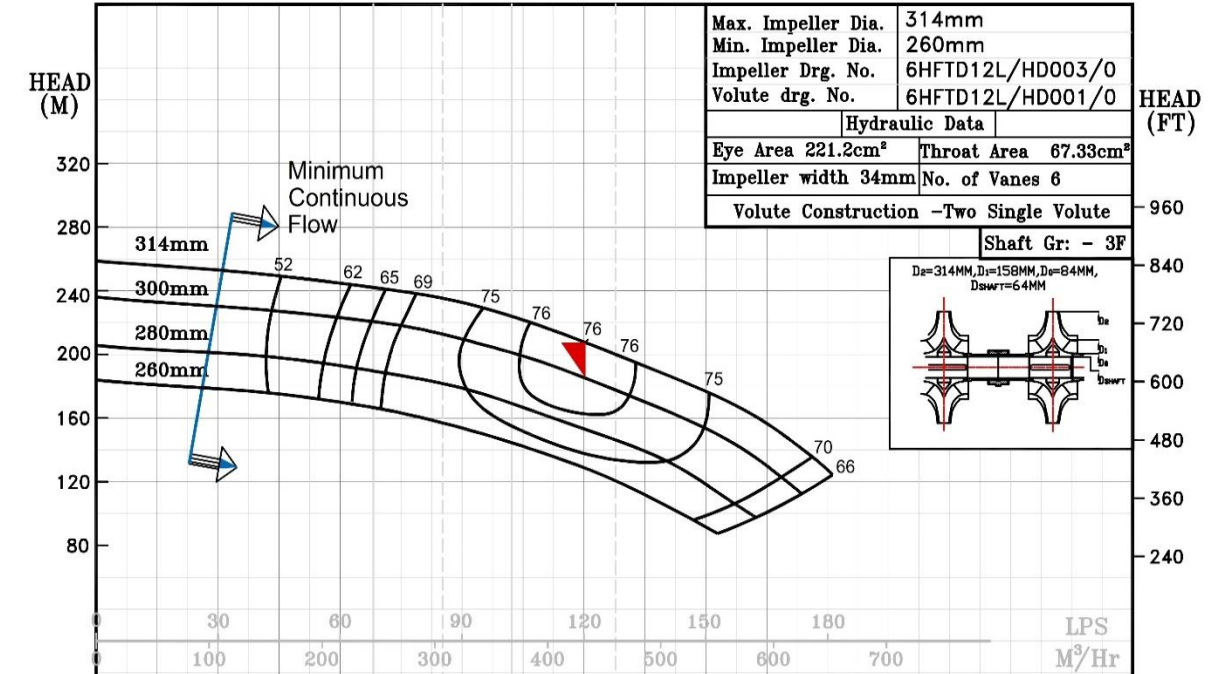


2960 RPM

NOTE- PERFORMANCE AS PER ISO 9906 GRADE-2B

PERFORMANCE CURVE OF 6HFTD12L @2975 R.P.M		6HFTD12L/Y/0111	
 PUMPSENSE <i>HFT RANGE</i>	MODEL 6HFTD12L	WORKING PRESS.	30 bar
	SIZE 200x150-314	TEST PRESS.	45 bar
	TYPE-AXIALLY SPLIT CASE TWO STAGE		SPEED 2975 rpm
RATED CAPACITY - 1000,1250 USGPM			

PUMP PERFORMANCE CHARACTERISTICS COMPUTED BASED ON CLEAN COLD WATER S.G 1.0



2975 RPM