


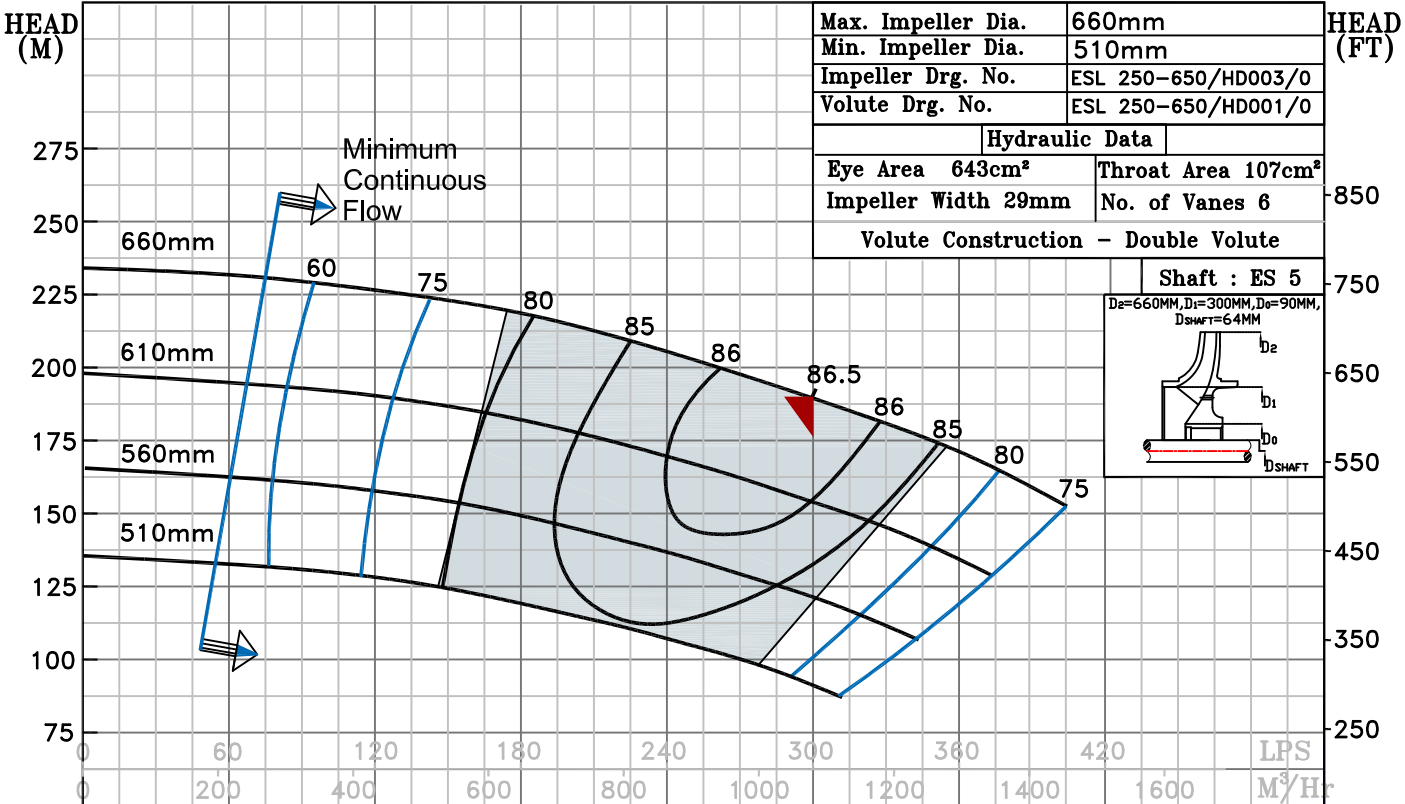
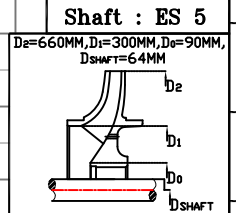
NOTE- PERFORMANCE AS PER ISO 9906 GRADE-2B

PERFORMANCE CURVE OF ESL 250-650 @1780 R.P.M		ESL 250-650/X/405864	
 <h1>PUMPSENSE</h1> <p><i>ESL RANGE</i></p>	MODEL ESL 250-650	WORKING PRESS. 20 bar	
	SIZE 300X250-660	TEST PRESS. 30 bar	
	TYPE-END SUCTION BACK PULL OUT		SPEED 1780 rpm

SHADED REGION ON THE H-Q CURVE REPRESENTS OPTIMUM SELECTION ZONE

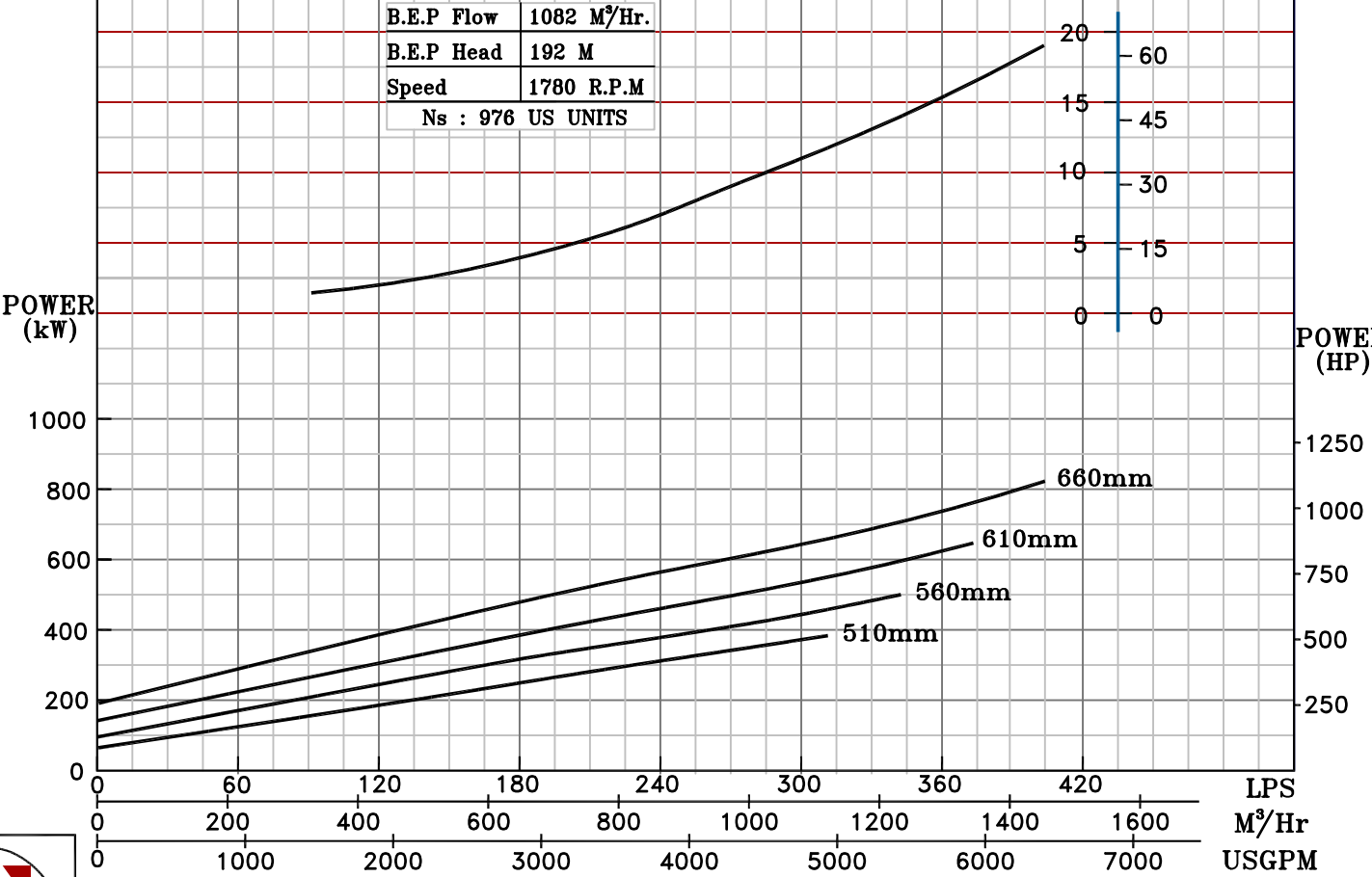
PUMP PERFORMANCE CHARACTERISTICS COMPUTED BASED ON CLEAN COLD WATER S.G 1.0

Max. Impeller Dia.	660mm
Min. Impeller Dia.	510mm
Impeller Drg. No.	ESL 250-650/HD003/0
Volute Drg. No.	ESL 250-650/HD001/0
Hydraulic Data	
Eye Area 643cm ²	Throat Area 107cm ²
Impeller Width 29mm	No. of Vanes 6
Volute Construction - Double Volute	



B.E.P Flow	1082 M ³ /Hr.
B.E.P Head	192 M
Speed	1780 R.P.M
Ns	: 976 US UNITS

NPSHr
(M) (FT)



1780 RPM