

PERFORMANCE CURVE OF 10HS27 @1480 R.P.M

10HS27/X/0912



PUMPSENSE

HS RANGE

MODEL 10HS27

SIZE 300x250-690

TYPE-AXIALLY SPLIT CASE SINGLE STAGE

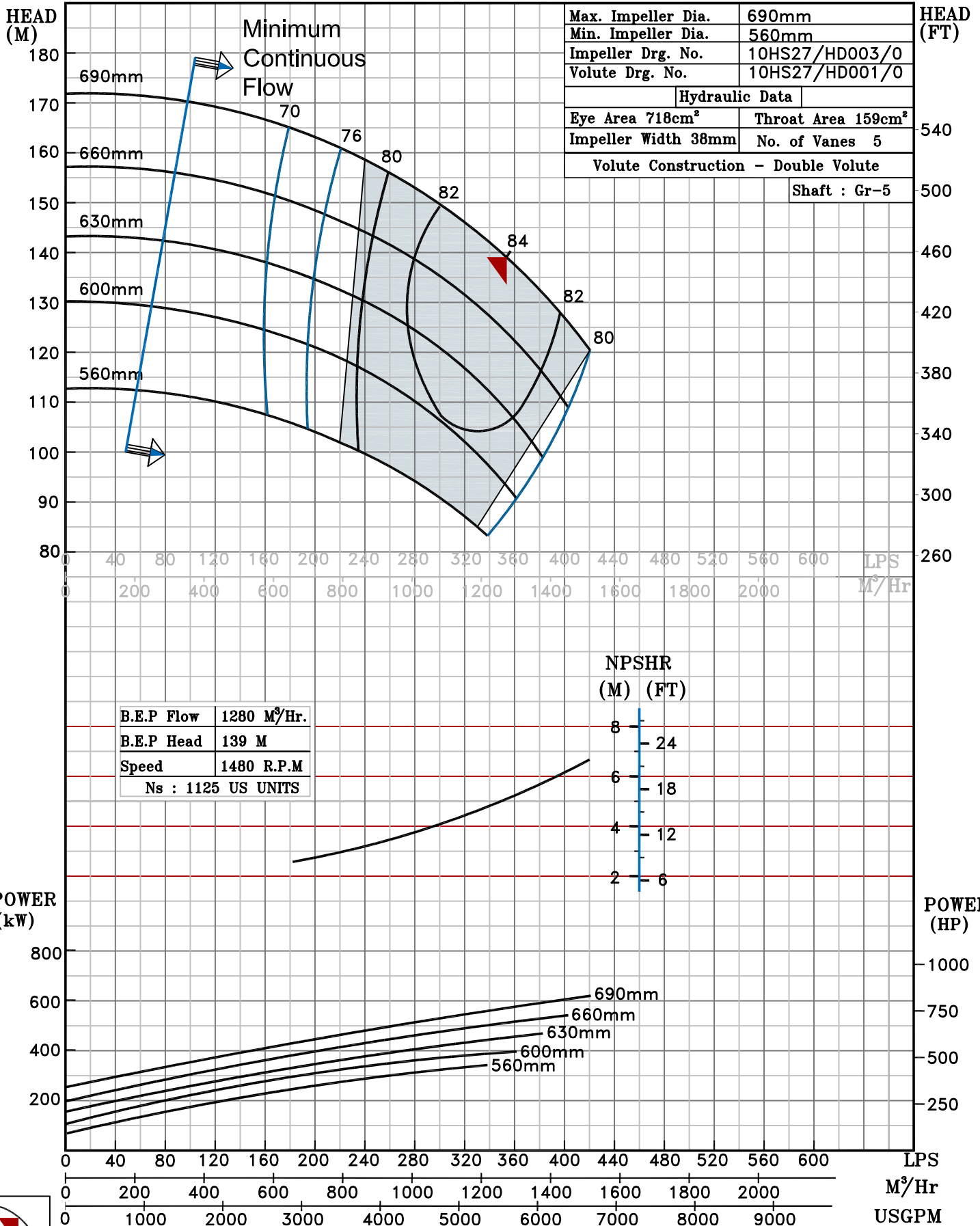
WORKING PRESS. 20 bar

TEST PRESS. 30 bar

SPEED 1480 rpm

SHADED REGION ON THE H-Q CURVE REPRESENTS OPTIMUM SELECTION ZONE

PUMP PERFORMANCE CHARACTERISTICS COMPUTED BASED ON CLEAN COLD WATER S.G 1.0



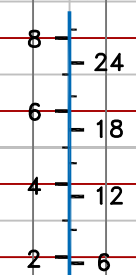
Max. Impeller Dia.	690mm
Min. Impeller Dia.	560mm
Impeller Drg. No.	10HS27/HD003/0
Volute Drg. No.	10HS27/HD001/0

Hydraulic Data	
Eye Area 718cm <sup>2</sup>	Throat Area 159cm <sup>2</sup>
Impeller Width 38mm	No. of Vanes 5
Volute Construction - Double Volute	

Shaft : Gr-5

B.E.P Flow	1280 M <sup>3</sup> /Hr.
B.E.P Head	139 M
Speed	1480 R.P.M
Ns : 1125 US UNITS	

NPSHR  
(M) (FT)



1480 RPM