

NOTE- PERFORMANCE AS PER ISO 9906 GRADE-2B

PERFORMANCE CURVE OF 10HS13L @1780 R.P.M

10HS13L/Y/103464

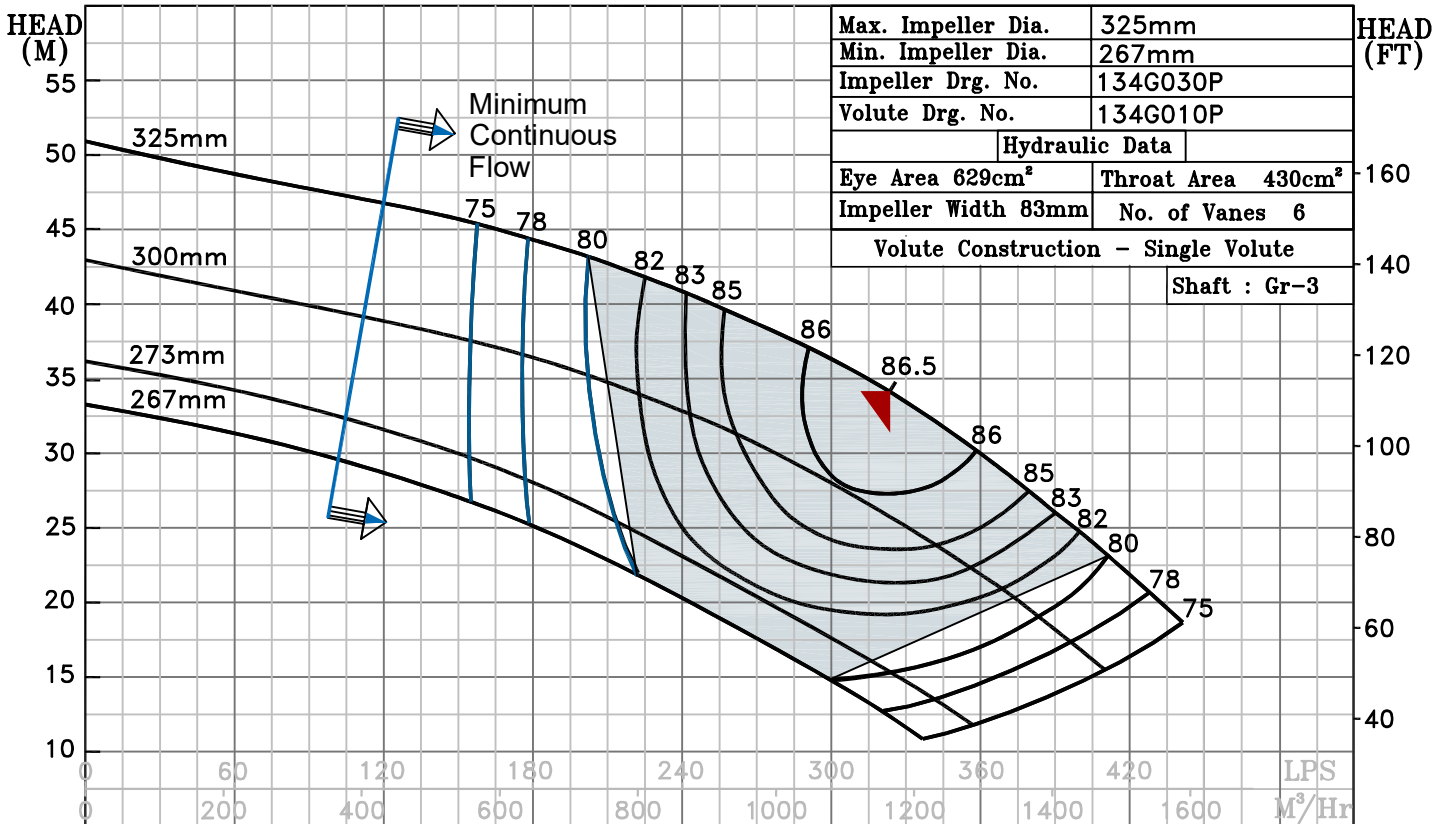


HS RANGE

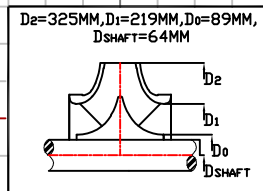
MODEL 10HS13L	WORKING PRESS. 16 bar
SIZE 300x250-325	TEST PRESS. 24 bar
TYPE-AXIALLY SPLIT CASE SINGLE STAGE	
SPEED 1780 rpm	
DATE - 06.10.2022	

SHADED REGION ON THE H-Q CURVE REPRESENTS OPTIMUM SELECTION ZONE

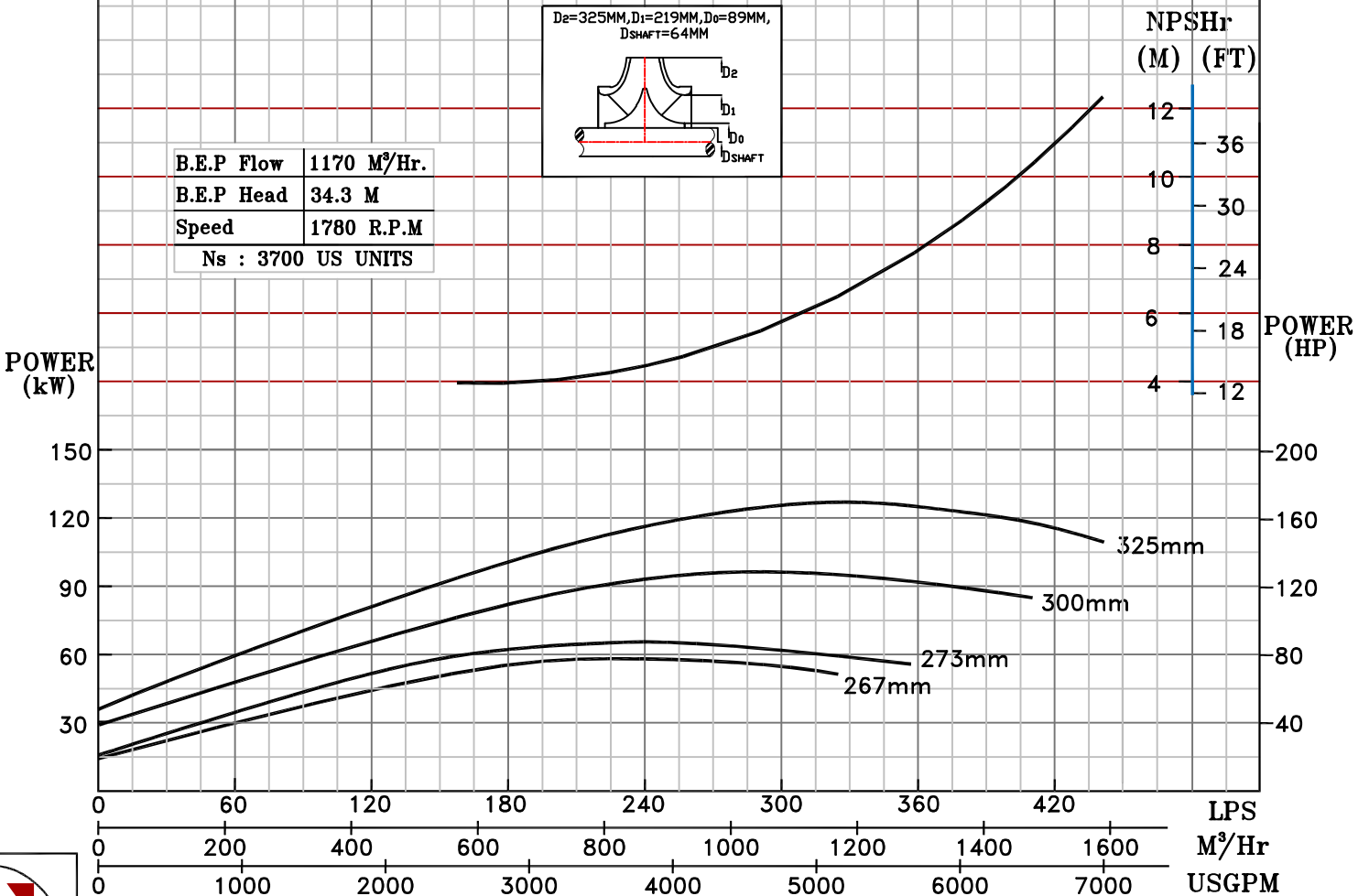
PUMP PERFORMANCE CHARACTERISTICS COMPUTED BASED ON CLEAN COLD WATER S.G 1.0



Max. Impeller Dia.	325mm	HEAD (FT)
Min. Impeller Dia.	267mm	
Impeller Drg. No.	134G030P	
Volute Drg. No.	134G010P	
Hydraulic Data		
Eye Area 629cm²	Throat Area 430cm²	160
Impeller Width 83mm	No. of Vanes 6	140
Volute Construction - Single Volute		
Shaft : Gr-3		



B.E.P Flow	1170 M³/Hr.
B.E.P Head	34.3 M
Speed	1780 R.P.M
Ns : 3700 US UNITS	



1780 RPM

