

NOTE- PERFORMANCE AS PER ISO 9906 GRADE-2B

PERFORMANCE CURVE OF 12HS23 @1780 R.P.M

12HS23/Y/104464

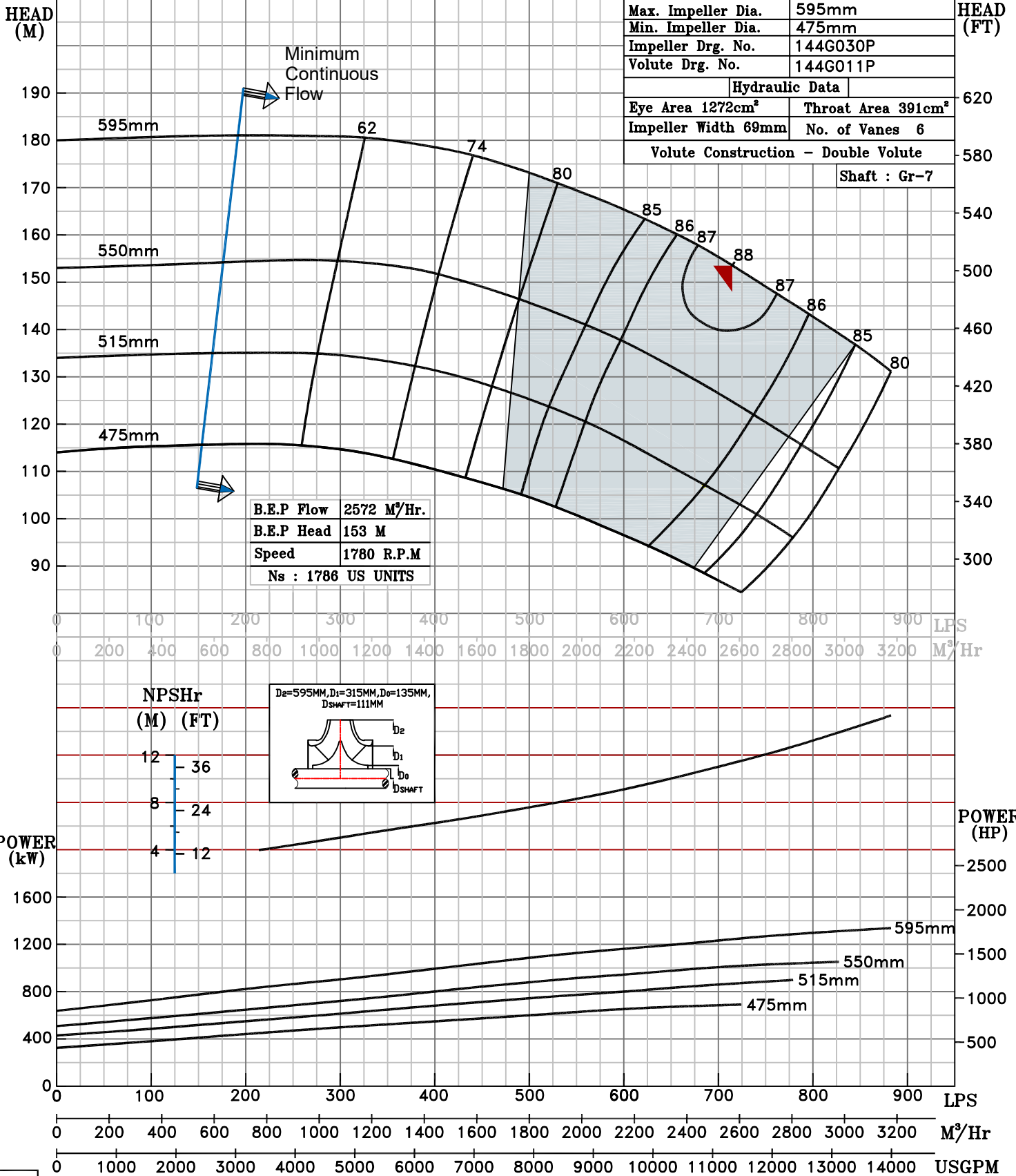


HS RANGE

MODEL 12HS23	WORKING PRESS. 20 bar
SIZE 350x300-595	TEST PRESS. 30 bar
TYPE-AXIALLY SPLIT CASE SINGLE STAGE	
SPEED 1780 rpm	
DATE - 06.10.2022	

SHADED REGION ON THE H-Q CURVE REPRESENTS OPTIMUM SELECTION ZONE

PUMP PERFORMANCE CHARACTERISTICS COMPUTED BASED ON CLEAN COLD WATER S.G 1.0



Max. Impeller Dia.	595mm
Min. Impeller Dia.	475mm
Impeller Drg. No.	144G030P
Volute Drg. No.	144G011P
Hydraulic Data	
Eye Area 1272cm²	Throat Area 391cm²
Impeller Width 69mm	No. of Vanes 6
Volute Construction - Double Volute	
Shaft : Gr-7	



1780 RPM