
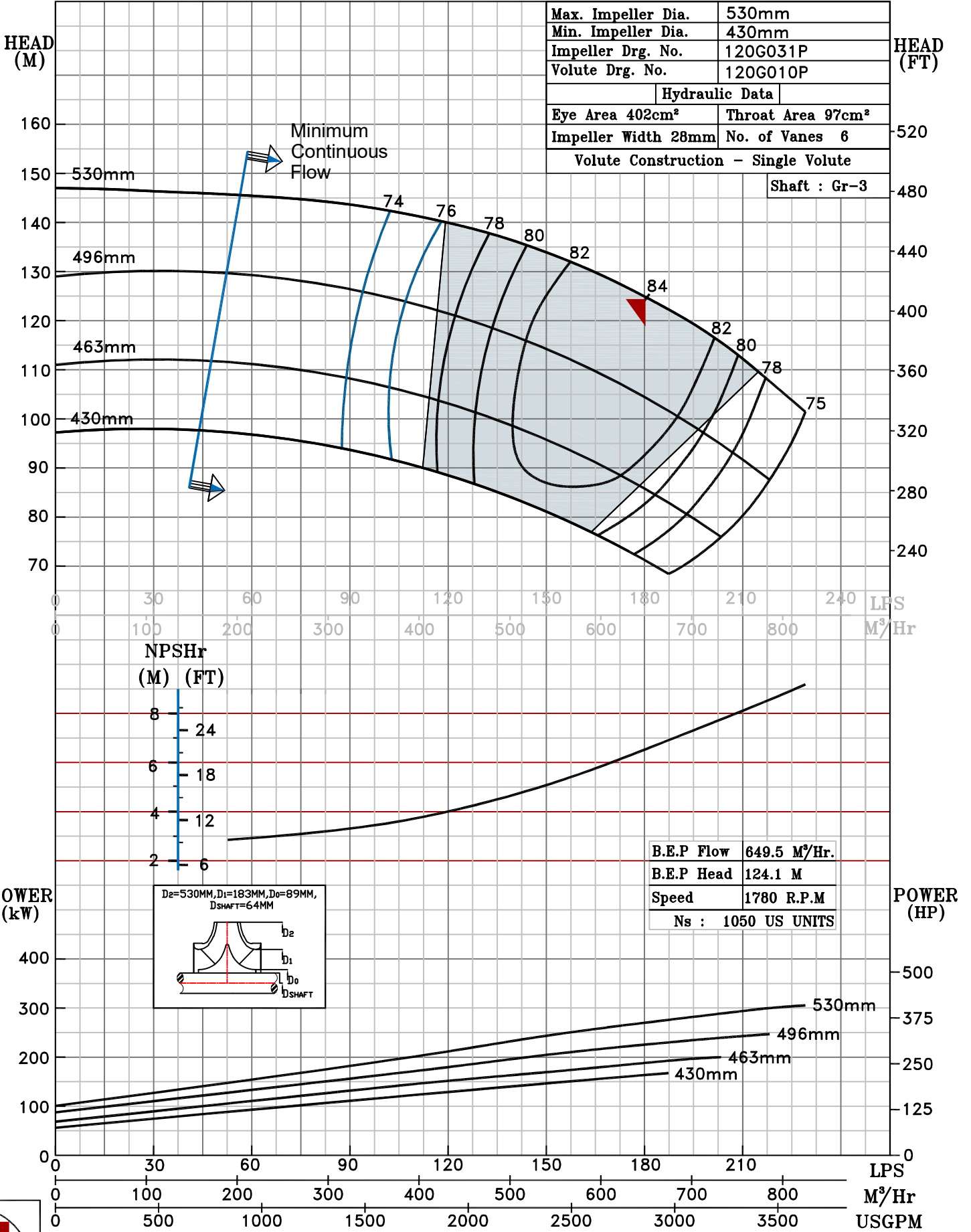


NOTE- PERFORMANCE AS PER ISO 9906 GRADE-2B

PERFORMANCE CURVE OF 6HS21 @1780 R.P.M		6HS21/Y/102064	
	MODEL 6HS21	WORKING PRESS.	16 bar
	SIZE 200x150-530	TEST PRESS.	24 bar
	TYPE-AXIALLY SPLIT CASE SINGLE STAGE		
HS RANGE			SPEED 1780 rpm
DATE - 06.10.2022			

SHADED REGION ON THE H-Q CURVE REPRESENTS OPTIMUM SELECTION ZONE
 PUMP PERFORMANCE CHARACTERISTICS COMPUTED BASED ON CLEAN COLD WATER S.G 1.0

Max. Impeller Dia.	530mm
Min. Impeller Dia.	430mm
Impeller Drg. No.	120G031P
Volute Drg. No.	120G010P
Hydraulic Data	
Eye Area 402cm ²	Throat Area 97cm ²
Impeller Width 28mm	No. of Vanes 6
Volute Construction - Single Volute	
Shaft : Gr-3	



1780 RPM