

# 10HF22/ MK1

PERFORMANCE CURVE OF 10HF22 @1480 R.P.M

10HF22/Y/0111



*HF RANGE*

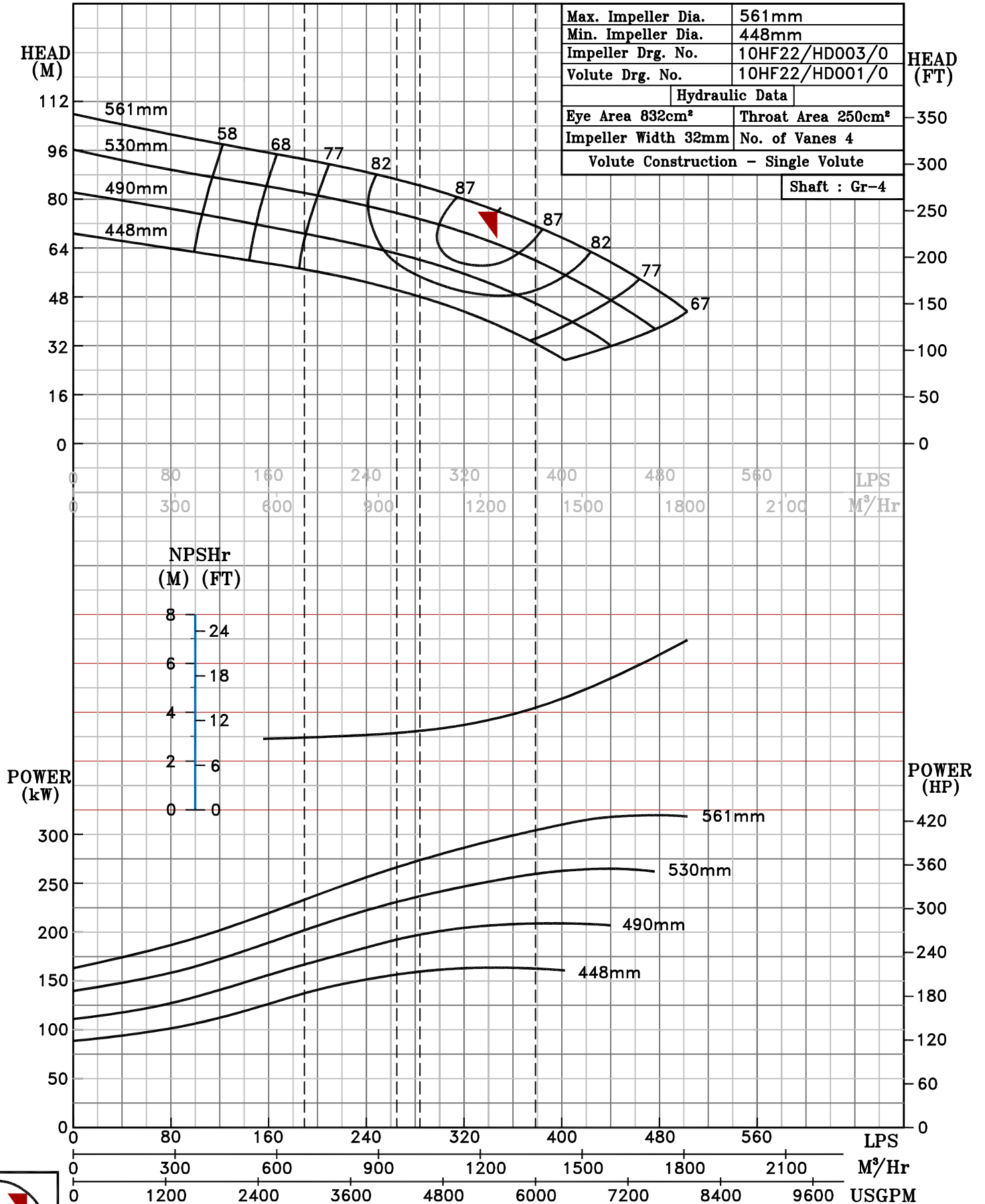
<b>MODEL</b> 10HF22	WORKING PRESS. 25 bar
SIZE 350x250-561	TEST PRESS. 37.5bar
TYPE-AXIALLY SPLIT CASE SINGLE STAGE	
SPEED 1480 rpm	

RATED CAPACITY - 4000 USGPM

PUMP PERFORMANCE CHARACTERISTICS COMPUTED BASED ON CLEAN COLD WATER S.G. 1.0

Max. Impeller Dia.	561mm
Min. Impeller Dia.	448mm
Impeller Drg. No.	10HF22/HD003/0
Volute Drg. No.	10HF22/HD001/0
Hydraulic Data	
Eye Area 832cm <sup>2</sup>	Throat Area 250cm <sup>2</sup>
Impeller Width 32mm	No. of Vanes 4
Volute Construction - Single Volute	

Shaft : Gr-4



1480 RPM