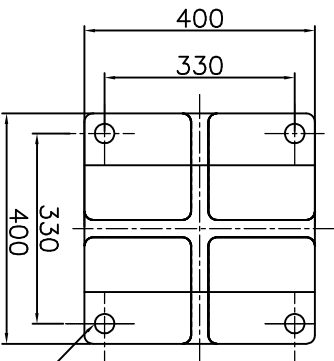
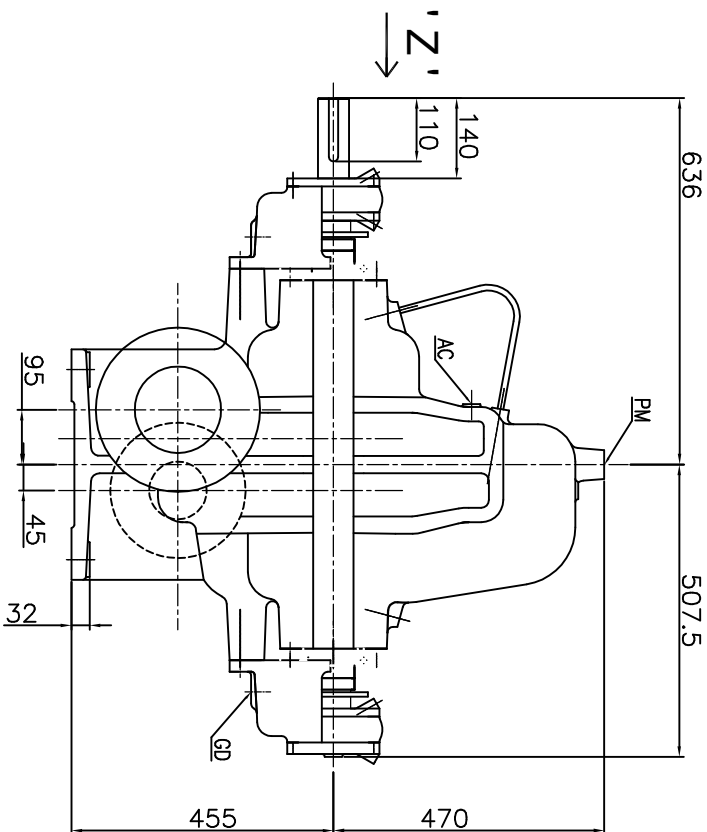
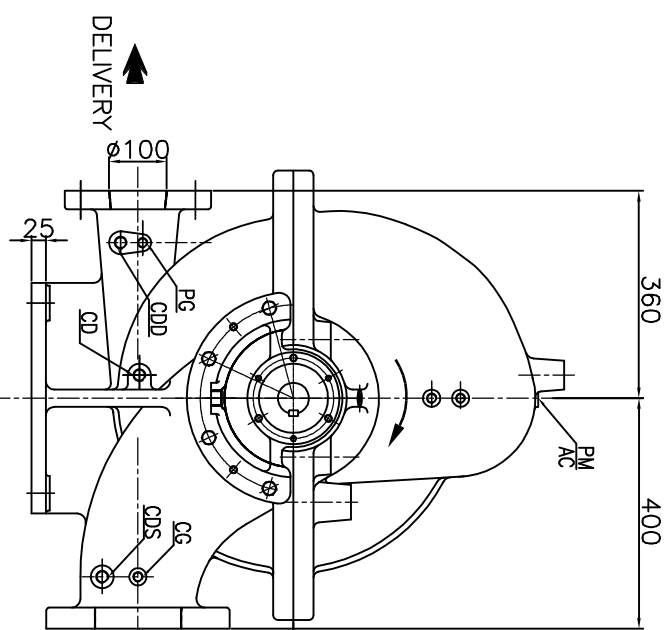


GENERAL ARRANGEMENT DRAWING FOR TWO STAGE AXIALLY SPLIT-CASE PUMP MODEL - 4HFT19

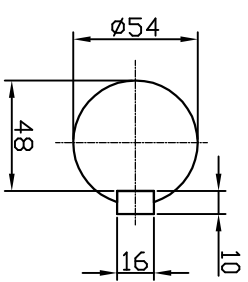


4-HOLES  $\phi 34$  AS SHOWN.

APPROX. NETT WEIGHT - 725kg.  
ALL DIMENSIONS ARE IN MM.



VIEW IN DIRECTION OF 'Z'



SCALE-4:1  
SHAFT DETAIL AT  
COUPLING END

CLOCK WISE ROTATION  
LOOKING FROM DRIVE END

ITEM	DESCRIPTION	SIZE(NPT)
GD	GLAND DRAIN	3/4"
CG	COMPOUND GAUGE FOR SUCTION	3/8"
PG	PRESSURE GAUGE FOR DELIVERY	3/8"
AC	AIR COCK	3/8"
PM	PRIMING	1/2"
CDS	CASING DRAIN(SUCTION SIDE)	1/2"
CDD	CASING DRAIN(DELIVERY SIDE)	1/2"

CONNECTIONS

DETAIL OF PUMP FEET

S	PN 16	285	240	22	8, $\phi 22$	—	—	220	180	20	8, $\phi 18$		
D	PN 16												
REF. NO.	TYPE OF FLANGE	O.D.	P.C.D.	THK MIN	NO. OFF HOLE	RF	$\phi$ REF. THK	O.D.	P.C.D.	THK MIN	NO. OFF HOLE	RF	$\phi$ REF. THK
				SUCTION - $\phi 150$				DELIVERY - $\phi 100$					

REV	DESCRIPTION	DRN	CHKD	APPD

PROJECT NAME - PUMPSENSE

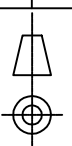
JOB NO. -

TITLE GA DRG. FOR 4HFT19(CW)

SCALE 1:1

DRN AS 12.04.13 DRG. NO. PSF/4HFT19/GA-01

CHKD AS 12.04.13 HS 12.04.13



REV 0