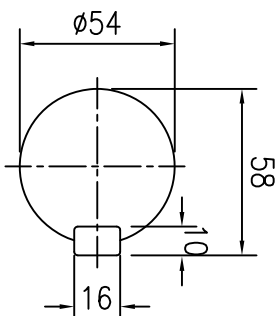
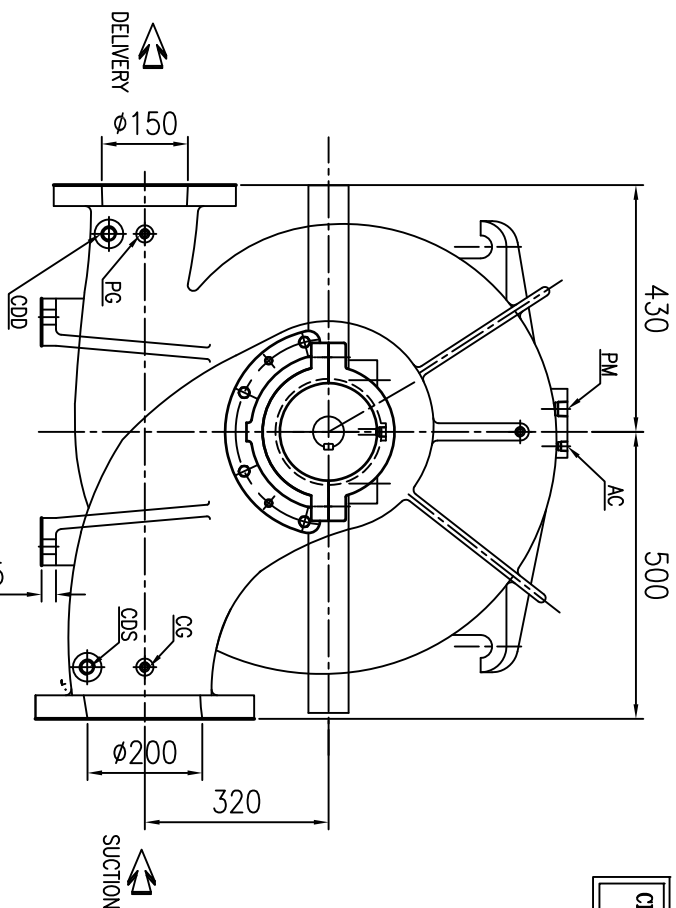
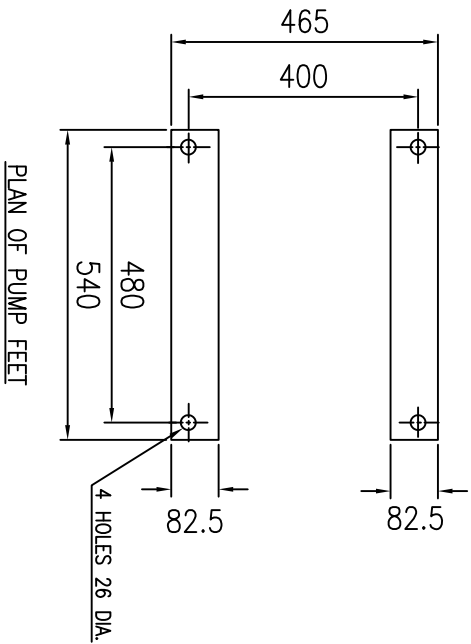
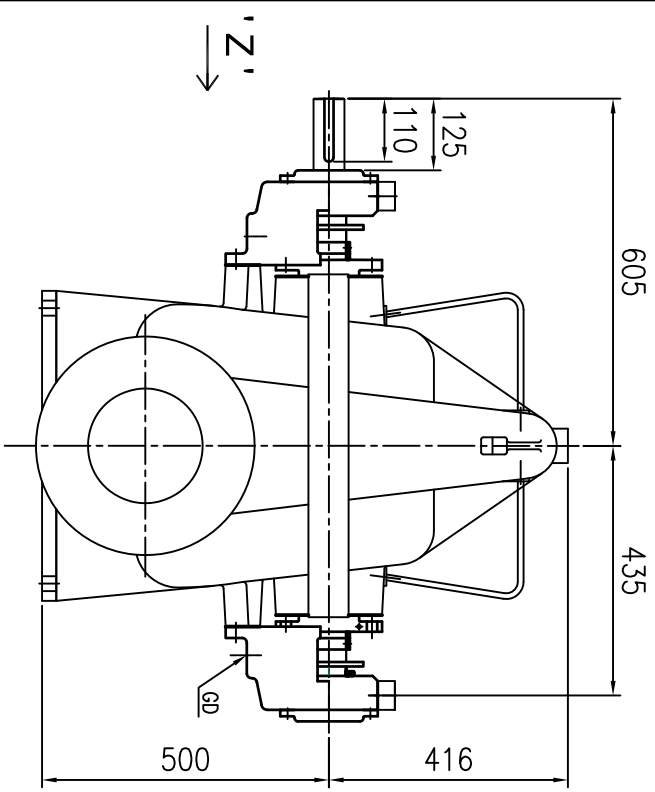


PUMP MODEL - 6HF20

GENERAL ARRANGEMENT DRAWING FOR SINGLE STAGE AXIALLY SPLIT CASE PUMP MODEL - 6HF20



CLOCK-WISE ROTATION
LOOKING FROM DRIVE END

SCALE - 5:1
SHAFT DETAIL AT
COUPLING END

VIEW IN DIRECTION OF ' Z '

APPROX. NET WEIGHT - 751kg.
ALL DIMENSIONS ARE IN MM.



** GAUGE CONNECTIONS, PIPING AND THERMO ONLY
WHEN SPECIALLY REQUESTED BY THE CUSTOMER

ITEM	DESCRIPTION	SIZE(NPT)
GD	GLAND DRAIN	3/4"
CG	COMPOUND GAUGE FOR SUCTION	3/8"
PG	PRESSURE GAUGE FOR DELIVERY	3/8"
AC	AIR COOK	3/8"
PM	PRIMING	1"
CDS	CASING DRAIN(SUCTION SIDE)	3/4"
CDD	CASING DRAIN(DELIVERY SIDE)	3/4"

DEL	1500	ANSI 250#FF	12-1/2"	10-5/8"	1-7/16"	12.07/8"	--	---
SUC	2000	ANSI 250#FF	15"	13"	1-5/8"	12.011"	--	---
		TYPE OF FLANGE					RFØ	RF THK
			O.D.	P.C.D.	THK	NO & MIN	HOLE Ø	RF FLANGE

REV	DESCRIPTION	DRN	CHKD	DATE	TITLE	SCALE
					GA DRG. FOR 6HF20	1:1
					DRN AD 16.09.19	
					CHKD SP 16.09.19	
					APPD HS 17.09.19	
					DRG. NO. PSF/6HF20/GA-01	
						REV 0

PUMPSENSE

