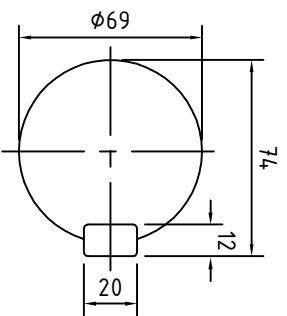
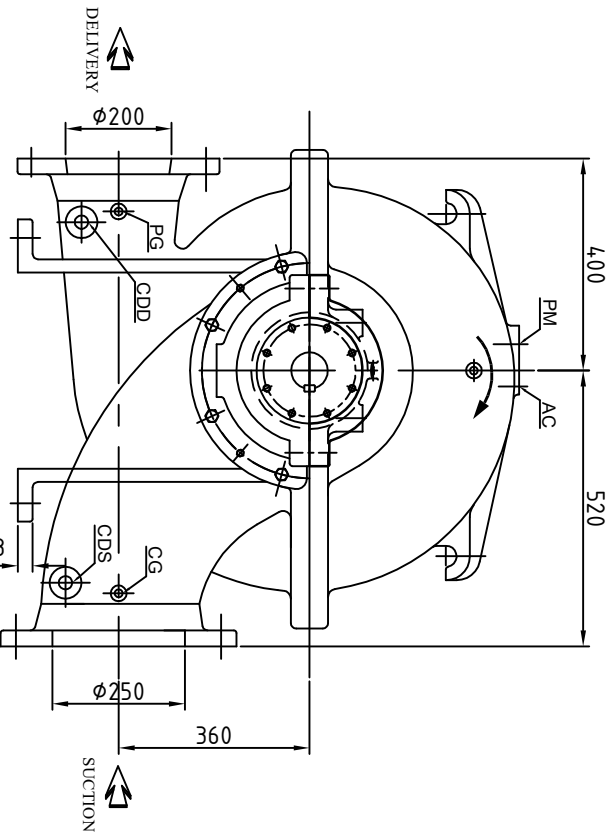
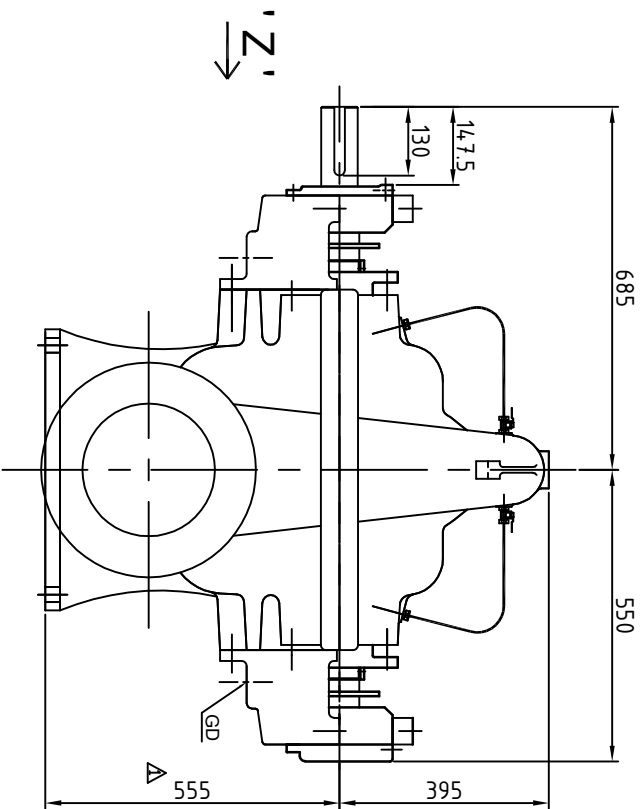


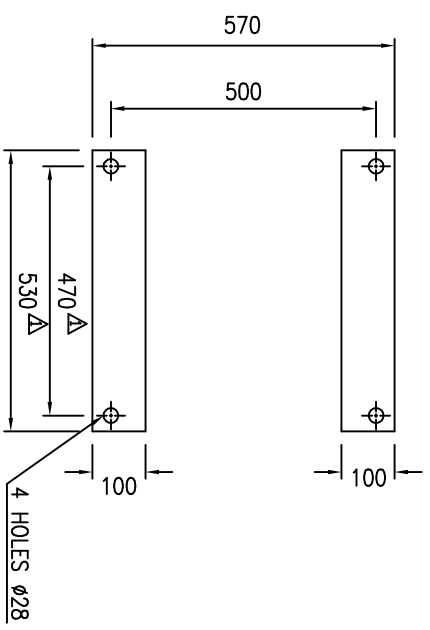
PUMP MODEL - 8HF22

GENERAL ARRANGEMENT DRAWING FOR SINGLE STAGE AXIALLY SPLIT CASE PUMP MODEL - 8HF22



CLOCK-WISE ROTATION  
LOOKING FROM DRIVE END

SCALE - 5:1  
SHAFT DETAIL AT  
COUPLING END



PLAN OF PUMP FEET

APPROX. NET WEIGHT - 900kg.  
ALL DIMENSIONS ARE IN MM.



ITEM	DESCRIPTION	SIZE(NPT)
GD	GLAND DRAIN	1"
CG	COMPOUND GAUGE FOR SUCTION	3/8"
PG	PRESSURE GAUGE FOR DELIVERY	3/8"
AC	AIR COCK	3/8"
PM	PRIMING	1-1/2"
CDS	CASING DRAIN(SUCTION SIDE)	1"
CDD	CASING DRAIN(DELIVERY SIDE)	1"

\*\* GAUGE CONNECTIONS DRILLED AND TAPPED ONLY WHEN SPECIFICALLY REQUESTED BY THE CUSTOMER.

S	ANSI 125FF	16"	4-1/4"	1-3/16"	1/2	Ø1"	—	—	—	—	—	—	—	—	—	—	—
D	ANSI 250FF																
REF. TYPE OF FLANGE.		D.D.	P.C.D.	THK MIN	NO OF HOLE	RF Ø	RF THK	RF FLANGE	D.D.	P.C.D.	THK MIN	NO OF HOLE	RF Ø	RF THK	RF FLANGE		
NO.		SUCTION 250 (10") I.D.						DELIVERY 200 (8") I.D.									

REV	DESCRIPTION	DRN	CHKD	DATE
1	DIMENSION 555, 470 & 530mm PREVIOUSLY IT WAS 550, 455 & 520mm RESPECTIVELY DIMENSION CHANGED FOR STANDARDIZE SPLIT CASE GROUP 4 MODELS.	AD	ST	10/09/17

PROJECT NAME -		JOB NO. -	
PUMPSENSE			
TITLE		SCALE	
GA DRG. FOR 8HF22		1:1	
DRN	ST	DRG. NO.	REV
CHKD	SP	PSF/8HF22/GA-01/1	1
APPD	HS		